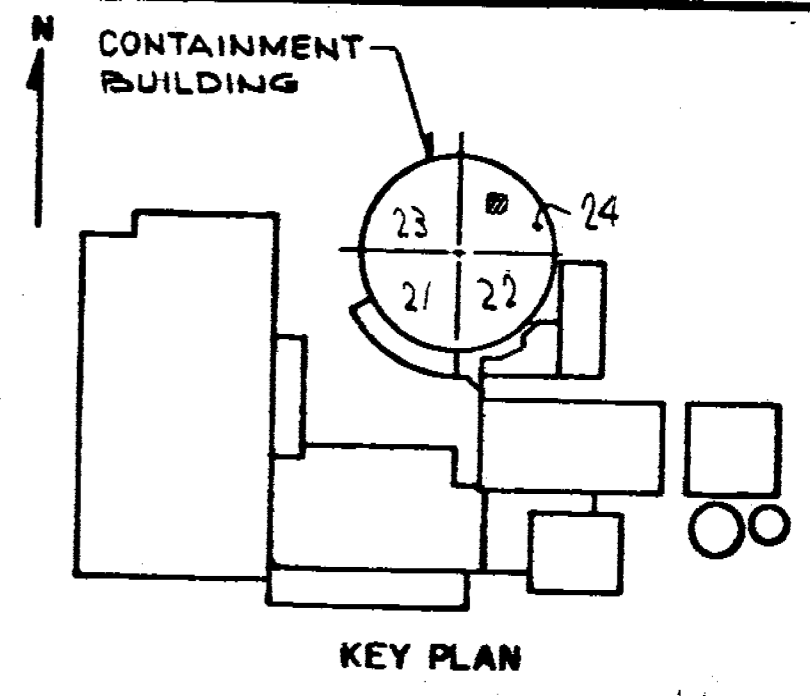
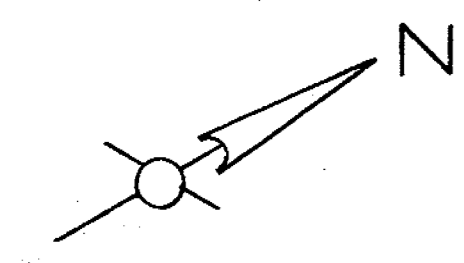


282902 B 206732  
 LINE NO 343  
 REACTOR COOLANT  
 INDIAN POINT #2  
 ISOMETRIC OF



**REVISIONS**

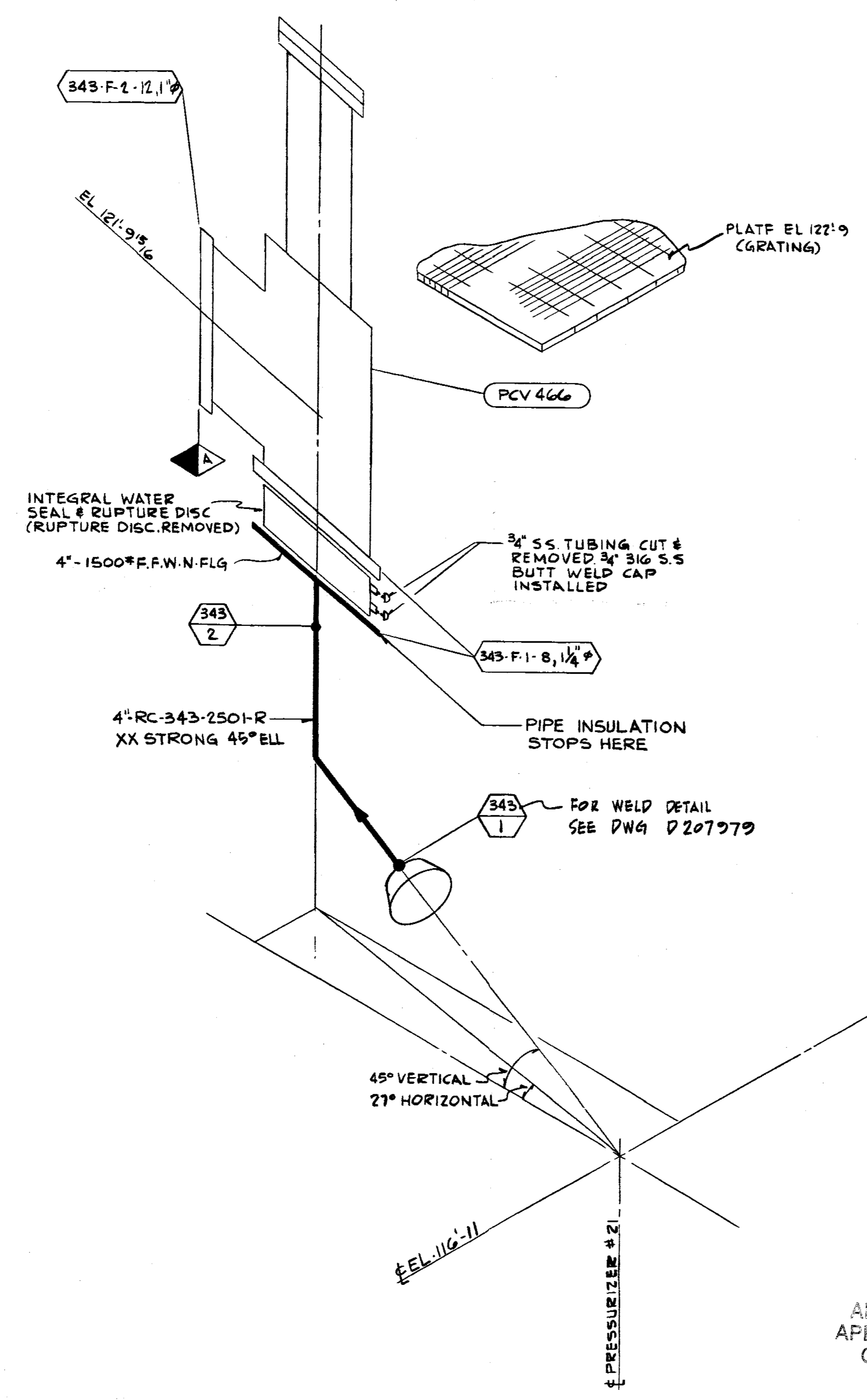
0  
 THIS ISSUE IS NON-CLASS 'A' PER CI 240-1. RELEASE FOR RECORD. P.N. 7076 11-3-78

1  
 THIS REVISION IS NON-CLASS 'A' PER CI-240-1. ADDED LATEST REV. NO. TO REF. DWG'S.. RELEASE FOR RECORD. P.N. 7076-716/AS EBASCO SERVICES, INC. 1-10-80

2  
 THIS REVISION IS NON-CLASS 'A' PER CI-240-1. ADDED LATEST REV. NO. TO REF. DWG'S. RELEASE FOR RECORD. P.N. 21368 TREADWELL CORP. 11-12-82

3  
 THIS REV. IS NON CLASS PER CI-240-1 CHANGED DISCIPLINE CODE FROM MJ TO ML. RELEASE FOR RECORD. P.N. 69911-EI AGI

12/28/95  
 THIS REVISION IS CLASS 'A' PER 240-1, UPDATED DWG. PER INSERVICE INSPECTION. FIELD REVISION INFORMATION RELEASE FOR RECORD P.N. 69911-EI J.S.



**VALVE BONNET BOLTING**

VALVE NO.	VALVE TYPE	NO. OF BOLTS	BOLT DIA.	BOLT TYPE	VALVE MANUFACTURER	MANUFACTURER DWG. NO.
PCV-466	4-RV58	MSB	8	STUD BOLT	CROSBY	H-91250

THIS DRAWING CONTAINS ITEMS WHICH MUST BE CONTROLLED WITHIN COM EDISON AS:  
**"CLASS A" ITEMS**  
 PER CI-240-1

NOT FOR FABRICATION OR INSTALLATION

FOR GENERAL NOTES SEE DWG B206733

**REFERENCE DRAWINGS**

FLOW DIAGRAM  
 REACTOR COOLANT SYSTEM \_\_\_\_\_ 9321-F-2738  
 CONTAINMENT BUILDING  
 PRIMARY COOLANT PRESSURIZER  
 SAFETY RELIEF VALVE PIPING  
 SHEET NO. 1 \_\_\_\_\_ 9321-F-2545  
 CONTAINMENT BUILDING  
 PRIMARY COOLANT PRESSURIZER  
 SAFETY RELIEF VALVE PIPING  
 SHEET NO. 2 \_\_\_\_\_ 9321-F-2546

**SYMBOL IDENTIFICATION**

FLANGE NUMBER, NUMBER OF BOLTS AND BOLT DIAMETER

VALVE NUMBER

WELD NUMBER

QUALITY GROUP CLASSIFICATION

**B206732-4**

**CONSOLIDATED EDISON CO.**  
 OF NEW YORK, INC.

STATION LOCATION INDIAN POINT #2  
 INSERVICE INSPECTION  
 ISOMETRIC OF REACTOR COOLANT LINE NO 343 (PRESSURIZER SAFETY)

SCALE NONE  
 DRAWN BY W. ANDRUSHKO  
 CHECKED BY F. BROOKS  
 DATE 7/76

APPROVALS

GENERAL ENGINEERING	CHIEF DESIGNER	<i>[Signature]</i>
MECHANICAL ENGINEERING	MECH. PLN.	<i>[Signature]</i>
CIVIL ENGINEERING	T & S STRUCT. ENGINEER	<i>[Signature]</i>
ELECTRICAL ENGINEERING	STATION ELECT. ENGINEER	<i>[Signature]</i>
GAS & STEAM OPERATIONS	STRUCT. ENGINEER	<i>[Signature]</i>
PRODUCTION	CONVENTIONAL POWER	
	NUCLEAR POWER	

Docket # 50-247  
 Accession # 74691017  
 Date 2/28/94  
 Regulatory Docket File

ANSTEC APERTURE CARD

