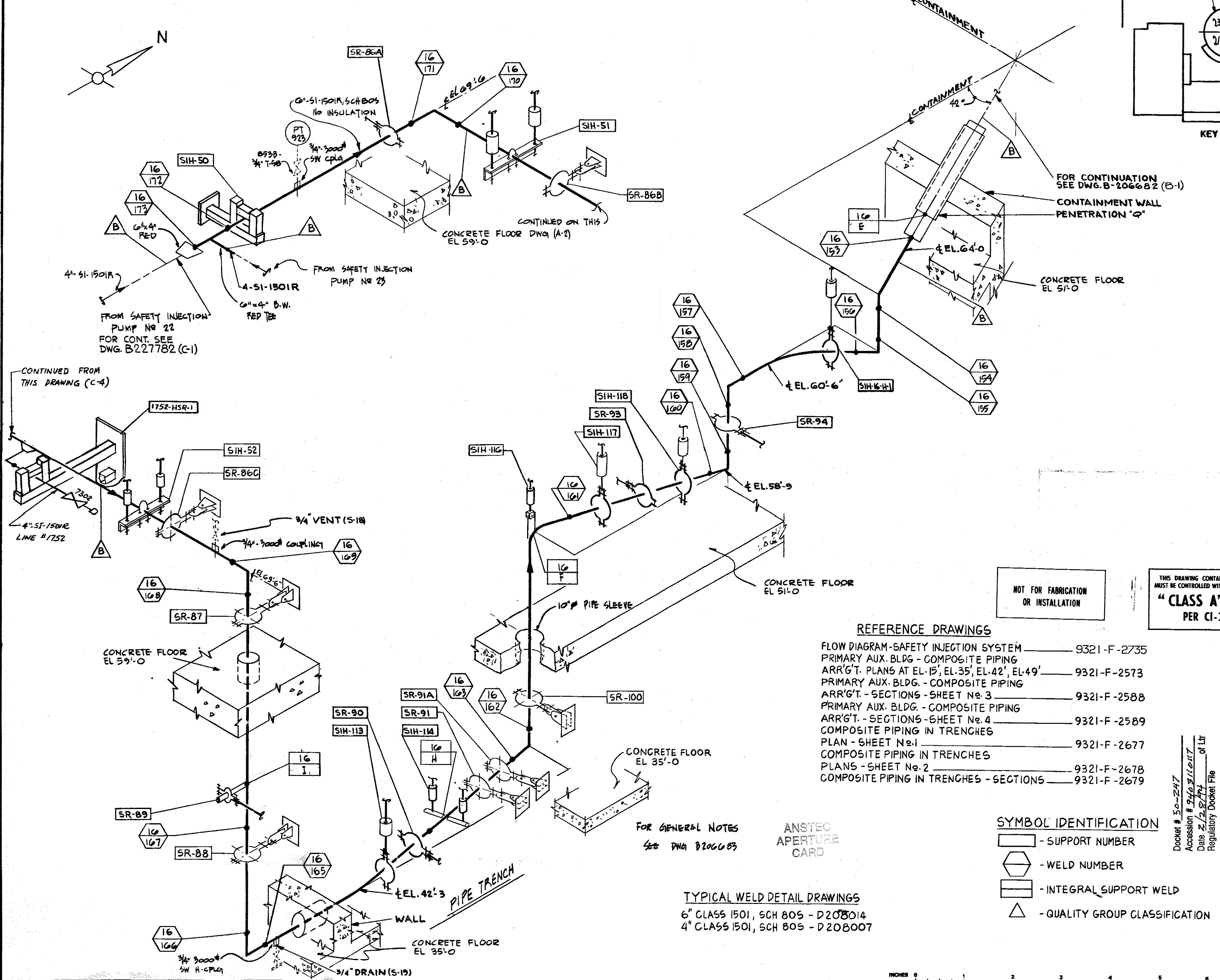


REVISIONS	
0	THIS ISSUE IS NON-CLASS 'A' PER CI-240-1. RELEASE FOR RECORD. P.N. 7076 M 11-3-78
1	THIS REVISION IS NON-CLASS 'A' PER CI-240-1. ADDED LATEST REV. NO. TO REF. DWG'S. DRAWINGS. ADDED LATEST REV. NO. TO REF. DWG'S. RELEASE FOR RECORD. P.N. 7076 RT/AS EBASCO SERVICES, INC. 1-10-80
2	THIS REVISION IS NON-CLASS 'A' PER CI-240-1. ADDED LATEST REV. NO. TO REF. DWG'S. ADDED SR 86A FOR RECORD. P.N. 21368 M TREADWELL CORP 11-12-82
3	THIS REVISION IS NON-CLASS 'A' PER CI-240-1. UPDATED DWG. PER INSERVICE INSPECTION. FIELD REVISION INFORMATION RELEASE FOR RECORD. P.N. 69911-E1 J.S.
4	THIS REV IS CLASS 'A' PER CI-240-1. UPDATED DWG PER AS FOUND CONDITIONS. RELEASE FOR RECORD. P.N. 69911-NP DM/RM

5	THIS REVISION IS CLASS 'A' AS PER CI-240-1. REVISED TO SHOW WORK DONE ON MOD. PROC. NO. MMM-90-03435-B PKG. NO. 6739 RELEASED AS CONSTRUCTED P.N. 03435-89 RM/DM
6	THIS REV IS NON-CLASS PER CI-240-1 CHANGED DISCIPLINE CODE FROM MI TO ML. RELEASE FOR RECORD. P.N. 69911-E1 J.S.
7	THIS REVISION IS CLASS 'A' PER CI-240-1. ADDED LINE CONT. DWG. NO. PER INSERVICE INSPECTION. FIELD REVISION INFORMATION RELEASE FOR RECORD. P.N. 69911-E1 J.S.



NOT FOR FABRICATION OR INSTALLATION

THIS DRAWING CONTAINS ITEMS WHICH MUST BE CONTROLLED WITHIN CON EDISON AS:
"CLASS A" ITEMS
 PER CI-240-1

NOT FOR FABRICATION OR INSTALLATION

REFERENCE DRAWINGS

FLOW DIAGRAM-SAFETY INJECTION SYSTEM	9321-F-2735
PRIMARY AUX. BLDG - COMPOSITE PIPING ARR'GT. PLANS AT EL.15', EL.35', EL.42', EL.49'	9321-F-2573
PRIMARY AUX. BLDG. - COMPOSITE PIPING ARR'GT. - SECTIONS - SHEET No.3	9321-F-2588
PRIMARY AUX. BLDG. - COMPOSITE PIPING ARR'GT. - SECTIONS - SHEET No.4	9321-F-2589
COMPOSITE PIPING IN TRENCHES PLAN - SHEET No.1	9321-F-2677
COMPOSITE PIPING IN TRENCHES PLANS - SHEET No.2	9321-F-2678
COMPOSITE PIPING IN TRENCHES - SECTIONS	9321-F-2679

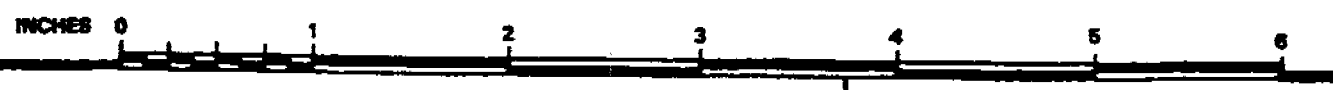
FOR GENERAL NOTES SEE DWG B206683

ANSTEC APERTURE CARD

TYPICAL WELD DETAIL DRAWINGS
 6" CLASS 1501, SCH 80S - D208014
 4" CLASS 1501, SCH 80S - D208007

SYMBOL IDENTIFICATION

[Symbol]	- SUPPORT NUMBER
[Symbol]	- WELD NUMBER
[Symbol]	- INTEGRAL SUPPORT WELD
[Symbol]	- QUALITY GROUP CLASSIFICATION



B206681-7
CONSOLIDATED EDISON CO.
 OF NEW YORK, INC.

STATION INDIAN POINT NUMBER 2
 LOCATION
 INSERVICE INSPECTION ISOMETRIC OF SAFETY INJECTION LINE #16 OUTSIDE OF CONTAINMENT

SCALE NONE	DRAWN BY C.ZAPATA	RECORDED
P.N. 7076	CHECKED BY SIMONE	DATE
DWG	ELECT	DATE

APPROVALS

GENERAL ENGINEERING	CHIEF DESIGNER	DATE
MECHANICAL ENGINEERING	MECH ENGR	DATE
CIVIL ENGINEERING	PLANT ENGINEER	DATE
ELECTRICAL ENGINEERING	T & D ENGINEER	DATE
GAS & STEAM OPERATIONS	STATION ELECT ENGINEER	DATE
PRODUCTION	T & D ENGINEER	DATE
	STRUCT ENGINEER	DATE
	CONVENTIONAL POWER	DATE
	NUCLEAR POWER	DATE

ML