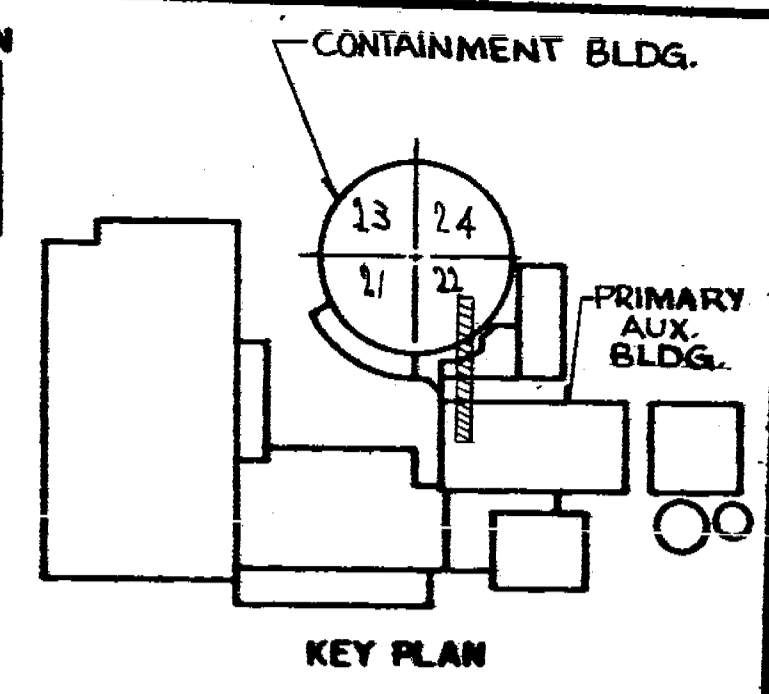


VALVE BONNET BOLTING						
VALVE NO.	VALVE TYPE	NO. OF BOLTS	BOLT DIA.	BOLT TYPE	VALVE MANUFACTURER	MANUFACTURER DWG. NO.
867B	8-G54	16	5/8"	STUD BOLTS	WESTINGHOUSE	D-8374D08
869B	8-G54Y	16	5/8"	STUD BOLTS	WESTINGHOUSE	D-9749D46

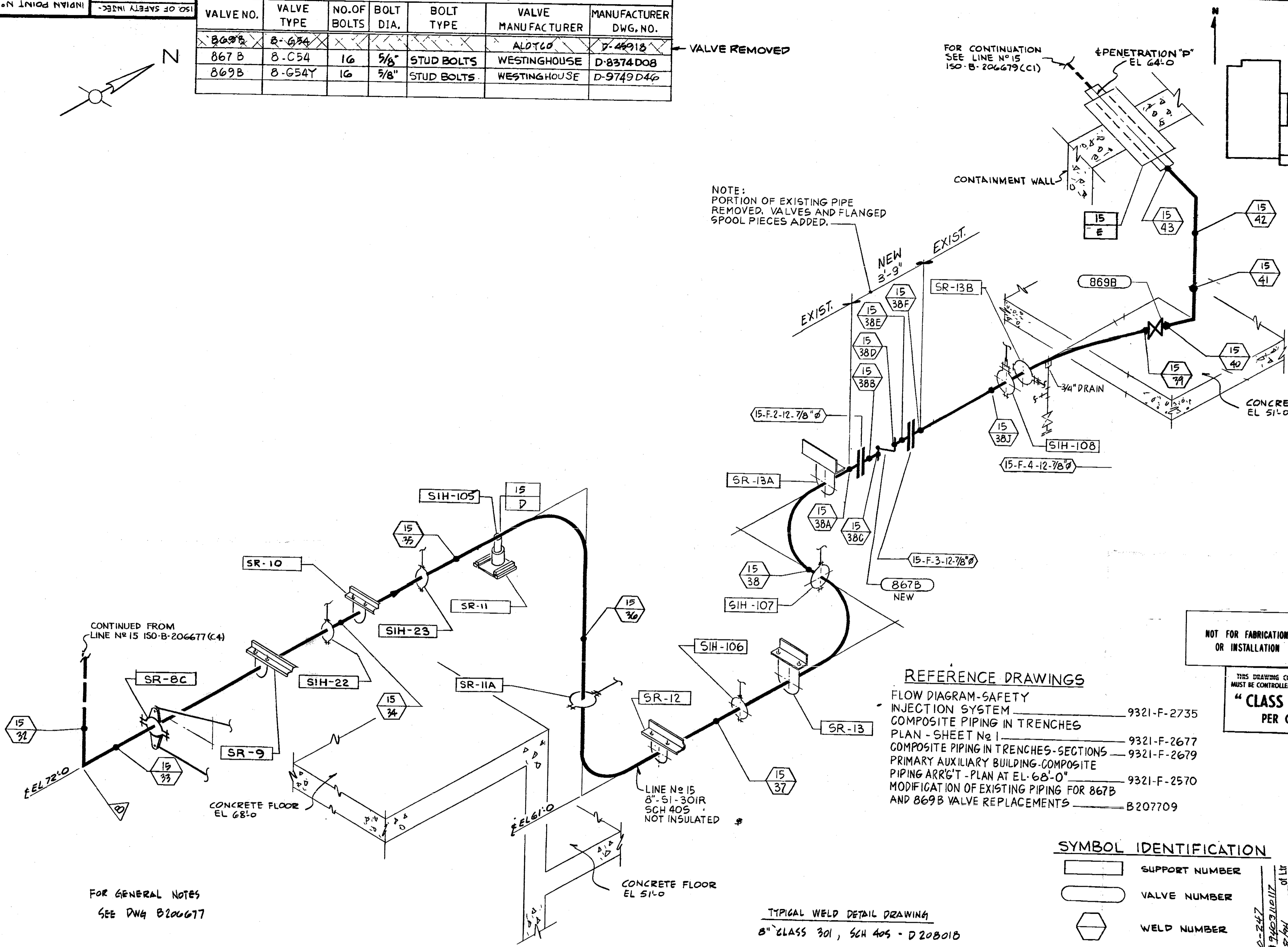
VALVE REMOVED

NOTE:
 PORTION OF EXISTING PIPE
 REMOVED, VALVES AND FLANGED
 SPOOL PIECES ADDED.

FOR CONTINUATION
 SEE LINE N° 15
 ISO-B-206679 (C1)



REVISIONS	
0	THIS ISSUE IS NON-CLASS "A" PER CI-240-1. RELEASE FOR RECORD. P.N. 7076 11-3-78
3	THIS REVISION IS NON CLASS PER CI-240-1 UPDATED DWG PER AS FOUND CONDITIONS RELEASE FOR RECORD P.N. 69911-CZ ANS/KE 6972B
4	THIS REV. IS NON-CLASS PER CI-240-1 CHANGED DISCIPLINE CODE FROM MJ TO ML. RELEASE FOR RECORD P.N. 69911-E1
5	THIS REVISION IS CLASS "A" PER 240-1, UPDATED DWG. PER INSERVICE INSPECTION. FIELD REVISION INFORMATION RELEASE FOR RECORD P.N. 69911-E1 J.S.



REFERENCE DRAWINGS

- FLOW DIAGRAM-SAFETY INJECTION SYSTEM 9321-F-2735
- COMPOSITE PIPING IN TRENCHES PLAN - SHEET N° 1 9321-F-2677
- COMPOSITE PIPING IN TRENCHES-SECTIONS 9321-F-2679
- PRIMARY AUXILIARY BUILDING-COMPOSITE PIPING ARR'GT - PLAN AT EL. 68'-0" 9321-F-2570
- MODIFICATION OF EXISTING PIPING FOR 867B AND 869B VALVE REPLACEMENTS B207709

NOT FOR FABRICATION OR INSTALLATION

THIS DRAWING CONTAINS ITEMS WHICH MUST BE CONTROLLED WITHIN CON EDISON'S "CLASS A" ITEMS PER CI-240-1

NOT FOR FABRICATION OR INSTALLATION

B206678-5
 CONSOLIDATED EDISON CO.
 OF NEW YORK, INC.

STATION LOCATION INDIAN POINT N° 2	
INSERVICE INSPECTION ISOMETRIC OF SAFETY INJECTION LINE N° 15 OUTSIDE CONTAINMENT	
SHEET N° 2 OF 4 (CONTAINMENT SPRAW)	
SCALE NONE	DRAWN BY W. ANDRUSIWSKI
PH 7076	CHECKED BY R. BROOKS
DATE 2-28-78	RECORDED 1/2/78
REGULATORY DOCKET FILE	
GENERAL ENGINEERING	CHIEF DESIGN ENGINEER
MECHANICAL ENGINEERING	MECH. PLANT ENGINEER
CIVIL ENGINEERING	PLANT STRUCT. ENGINEER
ELECTRICAL ENGINEERING	STATION ELECT. ENGINEER
GAS & STEAM OPERATIONS	T & D ENGINEER
PRODUCTION	STRUCT. ENGINEER
	CONVENTIONAL POWER
	NUCLEAR POWER

SYMBOL IDENTIFICATION

- SUPPORT NUMBER
- VALVE NUMBER
- WELD NUMBER
- QUALITY GROUP CLASSIFICATION
- INTEGRAL SUPPORT WELD NUMBER
- FLANGE NUMBER, NUMBER OF BOLTS AND BOLT DIAMETER

TYPICAL WELD DETAIL DRAWING
 8" CLASS 301, SCH 40S - D20801B



FOR GENERAL NOTES
 SEE DWG B206677