

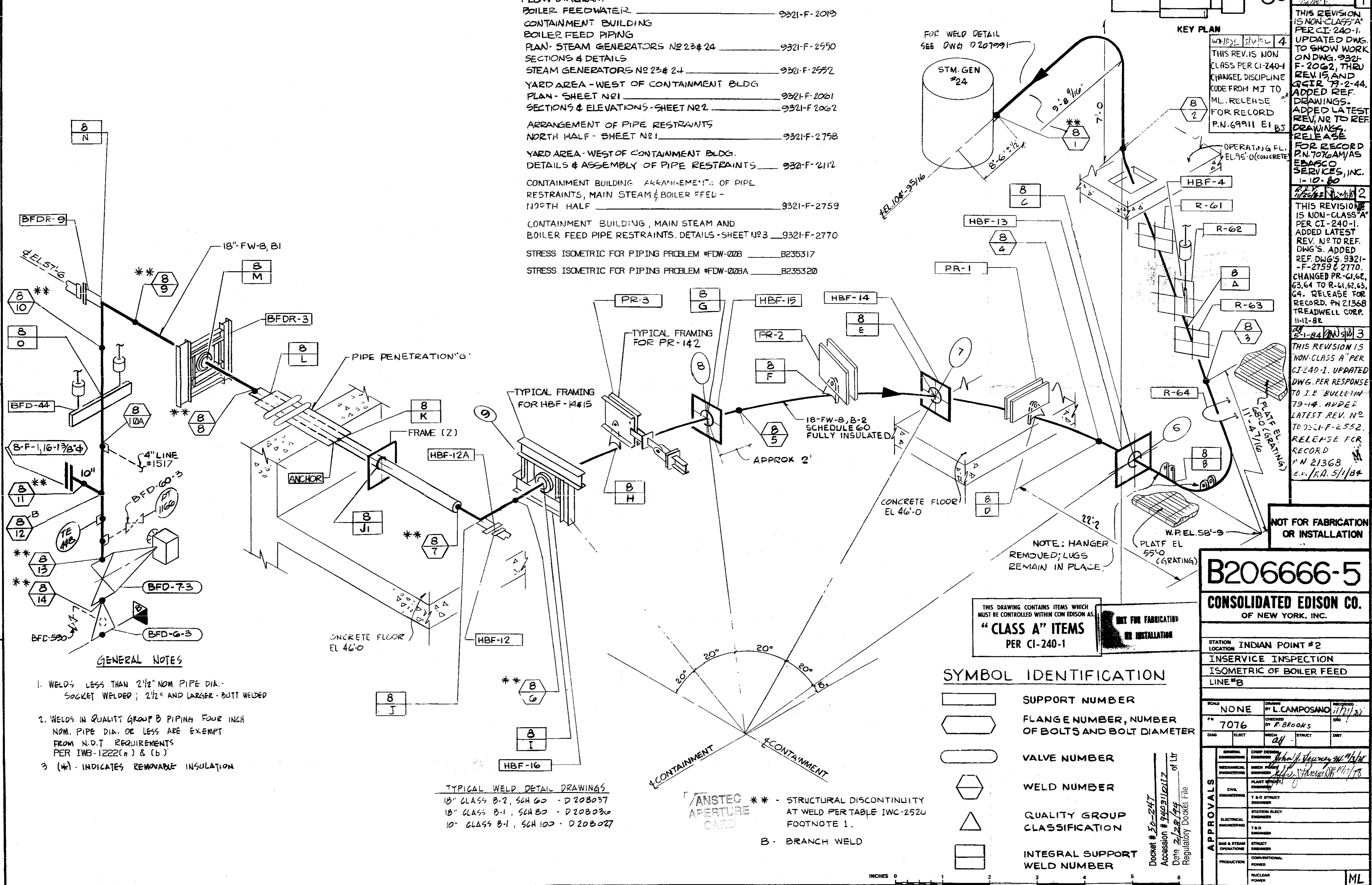
| VALVE BONNET BOLTING | | | | | | |
|----------------------|------------|--------------|-----------|-----------|--------------------|-----------------------|
| VALVE NO. | VALVE TYPE | NO. OF BOLTS | BOLT DIA. | BOLT TYPE | VALVE MANUFACTURER | MANUFACTURER DWG. NO. |
| BFD-6-3 | 18C37 | | | | CRANE-CHAPMAN | FIG#073 |
| BFD-7-3 | 18A37B | | | | POWELL | FIG#003WE |

THIS REVISION IS CLASS 'A' AS PER CI-240-1. UPDATED DWG AS PER AS-BUILT INFORMATION AND IN-SERVICE INSPECTION FIELD REVISION INFORMATION RELEASE FOR RECORD P.N. 69982-AD-3 JMBV 12/13/93 ATOMETRICS INC. 12/17/93 FCM

THIS REVISION IS NON CLASS 'A' PER CI-240-1. UPDATED DRAWING PER INFORMATION RECEIVED FROM FIELD. RELEASE FOR RECORD. P.N. 21368 V6/RC 5-84

| REVISIONS | |
|-----------|--|
| 0 | THIS ISSUE IS NON-CLASS 'A' PER CI 240-1. RELEASE FOR RECORD. P.N. 7076 11-3-78 |
| 1 | THIS REVISION IS NON-CLASS 'A' PER CI-240-1. UPDATED DWG. TO SHOW WORK ON DWG. 9321-F-2062, THRU REV. 15 AND 3-CIR 7-2-44. ADDED REF. DRAWINGS. ADDED LATEST REV. NO TO REF. DRAWINGS. RELEASE FOR RECORD. P.N. 7076 AM/AS EBASCO SERVICES, INC. 1-10-80 |
| 2 | THIS REVISION IS NON-CLASS 'A' PER CI-240-1. ADDED LATEST REV. NO TO REF. DWG'S. ADDED REF. DWG'S. 9321-F-2759 & 2770. CHANGED PR-61, 62, 63, 64 TO R-61, 62, 63, 64. RELEASE FOR RECORD. P.N. 21368 TREADWELL CORP. 11-12-82 |
| 3 | THIS REVISION IS NON-CLASS 'A' PER CI-240-1. UPDATED DWG. PER RESPONSE TO I.E. BULLETIN 79-14. ADDED LATEST REV. NO TO 9321-F-2552. RELEASE FOR RECORD P.N. 21368 E.I./E.A. 5/1/84 |

- REFERENCE DRAWINGS**
- FLOW DIAGRAM BOILER FEED WATER 9321-F-2019
 - CONTAINMENT BUILDING BOILER FEED PIPING PLAN - STEAM GENERATORS NO 23 & 24 9321-F-2550
 - SECTIONS & DETAILS STEAM GENERATORS NO 23 & 24 9321-F-2552
 - YARD AREA - WEST OF CONTAINMENT BLDG PLAN - SHEET NO 1 9321-F-2061
 - SECTIONS & ELEVATIONS - SHEET NO 2 9321-F-2062
 - ARRANGEMENT OF PIPE RESTRAINTS NORTH HALF - SHEET NO 1 9321-F-2758
 - YARD AREA - WEST OF CONTAINMENT BLDG. DETAILS & ASSEMBLY OF PIPE RESTRAINTS 9321-F-2112
 - CONTAINMENT BUILDING ARRANGEMENT OF PIPE RESTRAINTS, MAIN STEAM & BOILER FEED - NORTH HALF 9321-F-2759
 - CONTAINMENT BUILDING, MAIN STEAM AND BOILER FEED PIPE RESTRAINTS. DETAILS - SHEET NO 3 9321-F-2770
 - STRESS ISOMETRIC FOR PIPING PROBLEM #FDW-028 B235317
 - STRESS ISOMETRIC FOR PIPING PROBLEM #FDW-028A B235320



- GENERAL NOTES**
- WELDS LESS THAN 2 1/2" NOM PIPE DIA. SOCKET WELDED; 2 1/2" AND LARGER - BUTT WELDED
 - WELDS IN QUALITY GROUP B PIPING FOUR INCH NOM. PIPE DIA. OR LESS ARE EXEMPT FROM N.D.T REQUIREMENTS PER IWB-1222(a) & (b)
 - (*) INDICATES REMOVABLE INSULATION

TYPICAL WELD DETAIL DRAWINGS
 18" CLASS B-2, SCH 60 - D208037
 18" CLASS B-1, SCH 80 - D208036
 10" CLASS B-1, SCH 100 - D208027

ANSTEC APERTURE CARD
 ** - STRUCTURAL DISCONTINUITY AT WELD PER TABLE IWC-252U FOOTNOTE 1.
 B - BRANCH WELD

SYMBOL IDENTIFICATION

| | |
|----------|--|
| [Symbol] | SUPPORT NUMBER |
| [Symbol] | FLANGE NUMBER, NUMBER OF BOLTS AND BOLT DIAMETER |
| [Symbol] | VALVE NUMBER |
| [Symbol] | WELD NUMBER |
| [Symbol] | QUALITY GROUP CLASSIFICATION |
| [Symbol] | INTEGRAL SUPPORT WELD NUMBER |

B206666-5
CONSOLIDATED EDISON CO.
 OF NEW YORK, INC.

| | |
|----------------------------------|--------------------------------|
| STATION LOCATION INDIAN POINT #2 | |
| INSERVICE INSPECTION | |
| ISOMETRIC OF BOILER FEED LINE #8 | |
| SCALE NONE | DRAWN BY L. CAMPOSANO 11/17/84 |
| PK 7076 | CHECKED BY R. BROOKS EAO |
| DATE 12/17/93 | DESIGNED BY J. J. ... |
| APPROVALS | |
| GENERAL ENGINEERING | CHIEF DESIGNER |
| MECHANICAL ENGINEERING | MECH. PLAN. ENGINEER |
| CIVIL ENGINEERING | PLANT STRUCT. ENGINEER |
| ELECTRICAL ENGINEERING | T & D STRUCT. ENGINEER |
| OPERATIONS | STATION ELECT. ENGINEER |
| PRODUCTION | T & D SUPERVISOR |
| | STRUCT. SUPERVISOR |
| | CONVENTIONAL POWER |
| | NUCLEAR POWER |