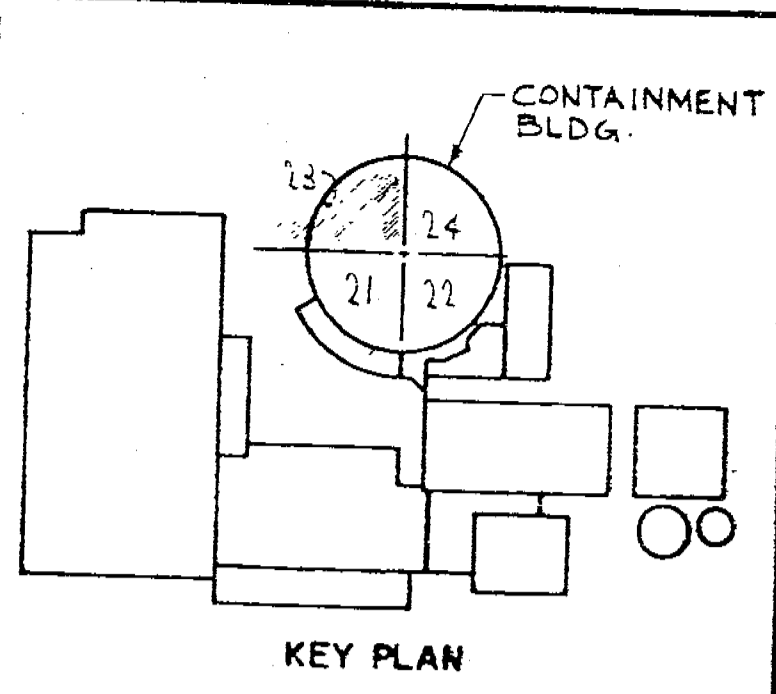


VALVE BONNET BOLTING						
VALVE NO.	VALVE TYPE	NO. OF BOLTS	BOLT DIA.	BOLT TYPE	VALVE MANUFACTURER	MANUFACTURER DWG. NO.
BFD-6-2	13637				CRANE-CHAPMAN	FIG# 973
BFD-7-2	13637B				POWELL	FIG# 9003 WE

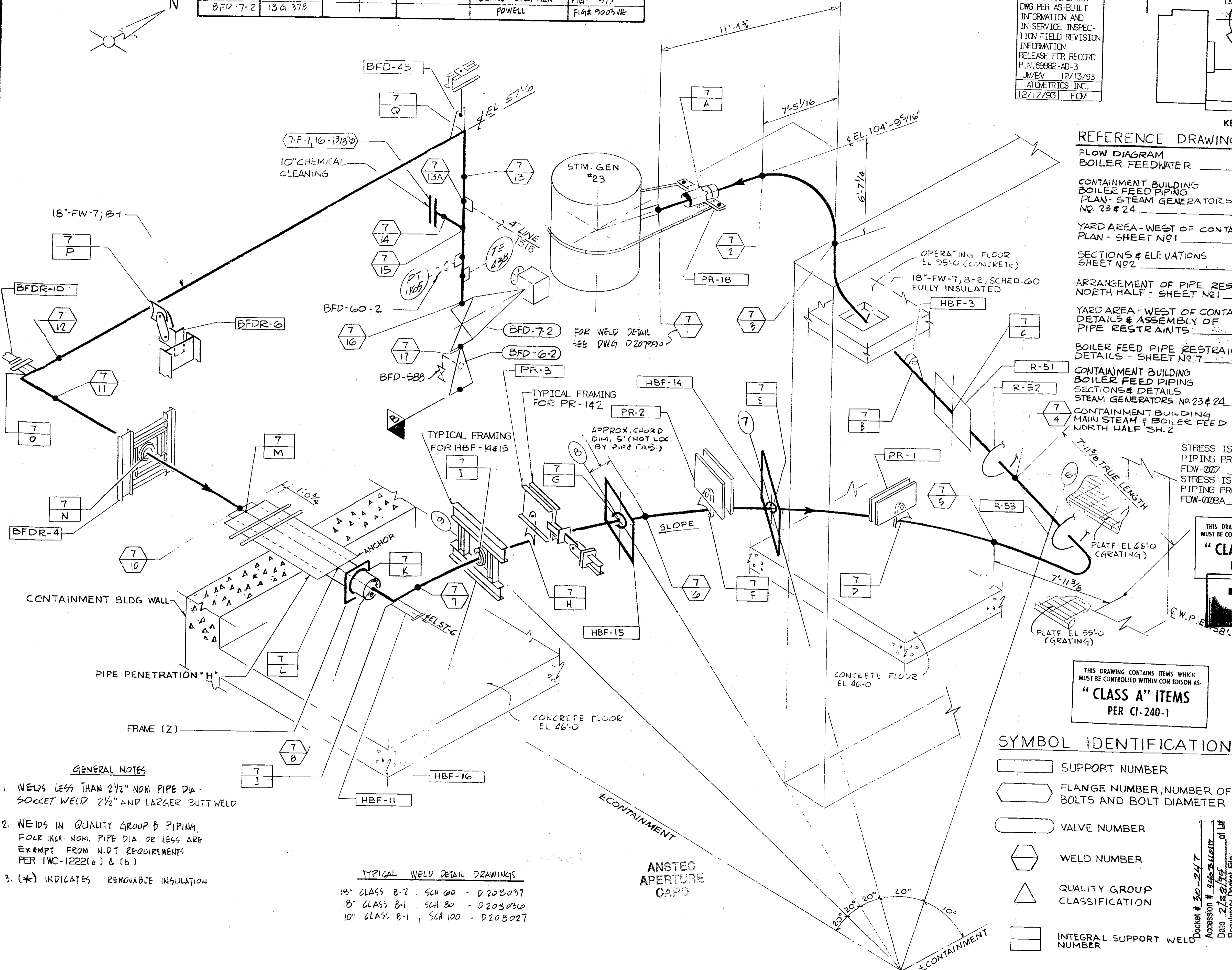
THIS REVISION IS CLASS 'A' AS PER CI-240-1. UPDATED DWG PER AS-BUILT INFORMATION AND IN-SERVICE INSPECTION FIELD REVISION INFORMATION RELEASE FOR RECORD P.N. 69982-AD-3 JM/BV 12/13/93 ATOMETRICS INC. 12/17/93 FCM



REVISIONS
 11-3-78
 THIS ISSUE IS NON-CLASS 'A' PER CI-240-1. RELEASE FOR RECORD. P.N. 7076 11-3-78

THIS REVISION IS NON-CLASS 'A' PER CI-240-1. UPDATED DWG. TO SHOW WORK ON DWG. 9321-F-2062, THRU REV. 15. ADDED REF. DRAWINGS. ADDED LATEST REV. NO. TO REF. DRAWINGS. RELEASE FOR RECORD. P.N. 7076 AM/AS EBASCO SERVICES INC. 1-10-80

- REFERENCE DRAWINGS**
- FLOW DIAGRAM BOILER FEED WATER 9321-F-2019
 - CONTAINMENT BUILDING BOILER FEED PIPING PLAN - STEAM GENERATOR NO. 23 & 24 9321-F-2550
 - YARD AREA - WEST OF CONTAINMENT BLDG. PLAN - SHEET NO. 1 9321-F-2061
 - SECTIONS & ELEVATIONS SHEET NO. 2 9321-F-2062
 - ARRANGEMENT OF PIPE RESTRAINTS NORTH HALF - SHEET NO. 1 9321-F-2758
 - YARD AREA - WEST OF CONTAINMENT BLDG. DETAILS & ASSEMBLY OF PIPE RESTRAINTS 9321-F-2112
 - BOILER FEED PIPE RESTRAINTS DETAILS - SHEET NO. 7 A205907
 - CONTAINMENT BUILDING BOILER FEED PIPING SECTIONS & DETAILS STEAM GENERATORS NO. 23 & 24 9321-F-2552
 - CONTAINMENT BUILDING MAIN STEAM & BOILER FEED NORTH HALF SH. 2 9321-F-2759
 - STRESS ISOMETRIC FOR PIPING PROBLEM FDW-0007 B235316
 - STRESS ISOMETRIC FOR PIPING PROBLEM FDW-0028A B235321



THIS DRAWING CONTAINS ITEMS WHICH MUST BE CONTROLLED WITHIN CON EDISON AS:
"CLASS A" ITEMS
 PER CI-240-1

THIS DRAWING CONTAINS ITEMS WHICH MUST BE CONTROLLED WITHIN CON EDISON AS:
"CLASS A" ITEMS
 PER CI-240-1

- SYMBOL IDENTIFICATION**
- SUPPORT NUMBER
 - FLANGE NUMBER, NUMBER OF BOLTS AND BOLT DIAMETER
 - VALVE NUMBER
 - WELD NUMBER
 - QUALITY GROUP CLASSIFICATION
 - INTEGRAL SUPPORT WELD NUMBER

GENERAL NOTES

- WELDS LESS THAN 2 1/2" NOM PIPE DIA. SOCKET WELD 2 1/2" AND LARGER BUTT WELD
- WELDS IN QUALITY GROUP B PIPING, FOUR INCH NOM. PIPE DIA. OR LESS ARE EXEMPT FROM N.D.T. REQUIREMENTS PER IWC-1222(a) & (b)
- (*) INDICATES REMOVABLE INSULATION

TYPICAL WELD DETAIL DRAWINGS

- 18" CLASS B-2, SCH 60 - D203037
- 18" CLASS B-1, SCH 30 - D203030
- 10" CLASS B-1, SCH 100 - D203027

B206665-4
CONSOLIDATED EDISON CO.
 OF NEW YORK, INC.

STATION LOCATION INDIAN POINT #2	
ISOMETRIC INSPECTION	
ISOMETRIC OF BOILER FEED	
LINE #7	
SCALE: NONE	DRAWN BY: L. CAMPOSANO
PN: 7076	CHECKED BY: E. BROOKS
DATE: 2/28/94	DATE: 11/11/93
DESIGN: []	ELECT: []
MECHANICAL ENGINEERING	CHIEF DESIGNER: []
CIVIL ENGINEERING	MECH. PLAN. ENGINEER: []
ELECTRICAL ENGINEERING	PLANT SAFETY ENGINEER: []
GAS & STEAM OPERATIONS	T & D STRUCT. ENGINEER: []
PRODUCTION	STATION ELECT. ENGINEER: []
	T & D ENGINEER: []
	STRUCT. ENGINEER: []
	CONVENTIONAL POWER: []
	NUCLEAR POWER: []

NOT FOR FABRICATION OR INSTALLATION

APPROVALS
 Date: 2/28/94
 Regulatory Docket File # 30-247