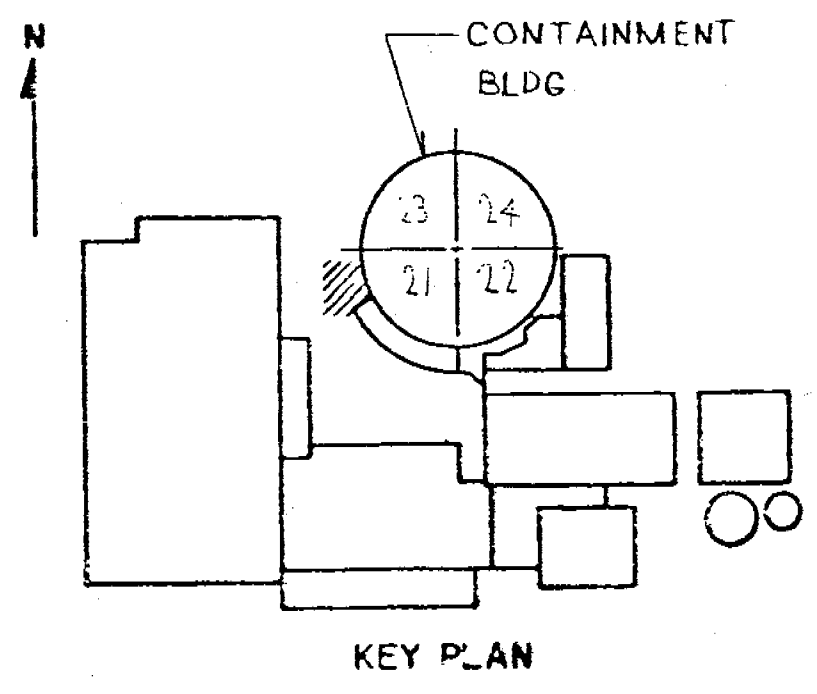


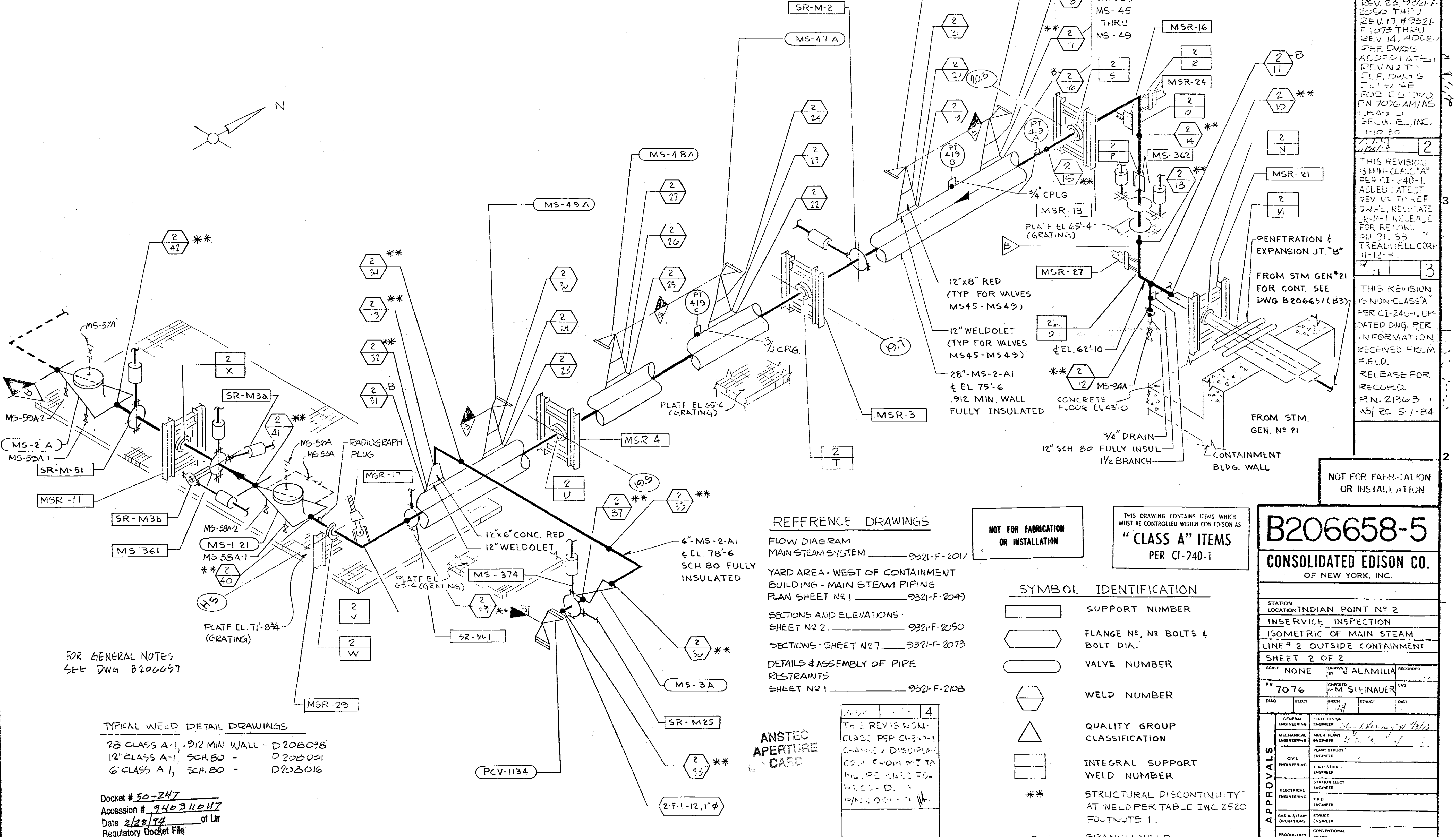
VALVE BOLMET BOLTING						
VALVE NO.	VALVE TYPE	NO. OF BOLTS	BOLT DIA.	BOLT TYPE	VALVE MANUFACTURER	MANUFACTURER DWG. NO.
MS-2 A	23 x P 30			STUD BOLTS	ATWOOD & MURRILL	20728-H
MS-1-21	23 x P 30	20		STUD BOLTS	ATWOOD & MURRILL	20727-H
MS-3 A	6.6-30 B				CRANE	FIG # 70 1/2 X 2
PCV-1134		8	1 1/8"	STUD BOLTS	COPELAND - VULCAN	E-179950
MS-45 A	6.10RV30				CRUSBY - ASHTON	STYLE HC-65W
MS-46 A	6.10RV30				CRUSBY - ASHTON	G-48378-17
MS-47 A	6.10RV30				CRUSBY - ASHTON	
MS-48 A	6.10RV30				CRUSBY - ASHTON	
MS-49 A	6.10RV30				CRUSBY - ASHTON	

11/12/93
 THIS REVISION IS CLASS "A" AS PER CI-240-1.
 UPDATED DWG AS PER IN-SERVICE INSPECTION
 FIELD REVISION INFORMATION
 RELEASE FOR RECORD
 P.N. 69982-AD-3 JWB/V 12/15/93
 ATOMETRICS INC.
 12/17/93 FCM



REVISIONS

1	THIS ISSUE IS NON-CLASS "A" PER CI 240-1. RELEASE FOR RECORD. P.N. 7076 11-3-78
2	THIS REVISION IS NON-CLASS "A" PER CI 240-1. UPDATED DWG TO SHOW WORK ON DWG 9321-F-2049. REV. 23 9321-F-2050 THIS REV. 17 9321-F-2073 THRU REV 14. ADDED REF. DWGS. ADDED LATEST REV. DWG'S TO REFERENCE FOR RECORD. P.N. 7076 AM/AS LBA/2 BELMUE, INC. 11-0-80
3	THIS REVISION IS NON-CLASS "A" PER CI-240-1. ADDED LATEST REV. NO. TO REF. DWGS. RELATE TO-4-1 RELEASE FOR RECORD. P.N. 21363 TREADWELL CORP. 11-12-84
4	THIS REVISION IS NON-CLASS "A" PER CI-240-1. UPDATED DWG. PER INFORMATION RECEIVED FROM FIELD. RELEASE FOR RECORD. P.N. 21363 11/20/84



FOR GENERAL NOTES SEE DWG B206657

TYPICAL WELD DETAIL DRAWINGS
 23 CLASS A-1, .912 MIN WALL - D208038
 12" CLASS A-1, SCH. 80 - D208031
 6" CLASS A-1, SCH. 80 - D208016

Docket # 50-247
 Accession # 94031047
 Date 2/23/94 of Ltr
 Regulatory Docket File

- REFERENCE DRAWINGS**
- FLOW DIAGRAM MAIN STEAM SYSTEM 9321-F-2017
 - YARD AREA - WEST OF CONTAINMENT BUILDING - MAIN STEAM PIPING PLAN SHEET NO 1 9321-F-2049
 - SECTIONS AND ELEVATIONS SHEET NO 2 9321-F-2050
 - SECTIONS - SHEET NO 7 9321-F-2073
 - DETAILS & ASSEMBLY OF PIPE RESTRAINTS SHEET NO 1 9321-F-2108

NOT FOR FABRICATION OR INSTALLATION

THIS DRAWING CONTAINS ITEMS WHICH MUST BE CONTROLLED WITHIN CON EDISON AS "CLASS A" ITEMS PER CI-240-1

- SYMBOL IDENTIFICATION**
- SUPPORT NUMBER
 - FLANGE NO, NO BOLTS & BOLT DIA.
 - VALVE NUMBER
 - WELD NUMBER
 - QUALITY GROUP CLASSIFICATION
 - INTEGRAL SUPPORT WELD NUMBER
 - STRUCTURAL DISCONTINUITY AT WELD PER TABLE INC 2520 FOOTNOTE 1.
 - BRANCH WELD

ANSTEC APERTURE CARD

THIS REVISION IS CLASS "A" PER CI-240-1. CHANGED DISCONTINUITY CODE FROM MS TO NUCLEAR RELEASE FOR RECORD. P.N. 21363 11/20/84

B206658-5
 CONSOLIDATED EDISON CO.
 OF NEW YORK, INC.

STATION LOCATION INDIAN POINT #2	
INSERVICE INSPECTION	
ISOMETRIC OF MAIN STEAM	
LINE # 2 OUTSIDE CONTAINMENT	
SHEET 2 OF 2	
SCALE NONE	DRAWN BY J. ALAMILIA
P.N. 7076	CHECKED BY M. STEINAUER
DWG	ELECT MECH STRUCT DWG
GENERAL ENGINEERING	CHIEF DESIGN ENGINEER
MECHANICAL ENGINEERING	MECH PLAN ENGINEER
CIVIL ENGINEERING	PLANT STRUCT ENGINEER
ELECTRICAL ENGINEERING	T & D STRUCT ENGINEER
GAS & STEAM OPERATIONS	STRUCT ENGINEER
PRODUCTION	CONVENTIONAL POWER
	NUCLEAR POWER

ML