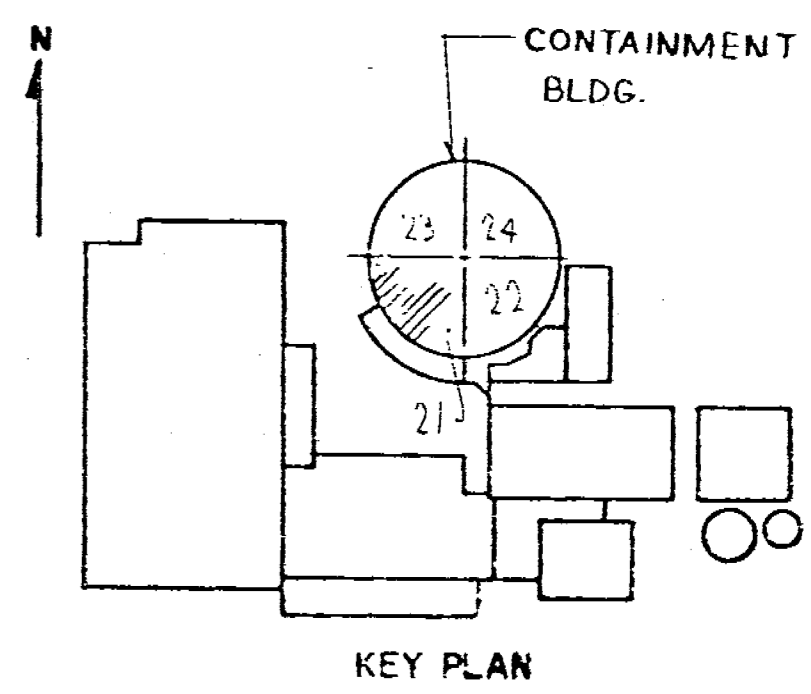


12/17/93
THIS REVISION IS CLASS "A" AS PER CI-240-1.
UPDATED DWG AS PER AS-BUILT INFORMATION
AND IN-SERVICE INSPECTION FIELD REVISION
INFORMATION RELEASE FOR RECORD
P.N. 69982-AD-3 JWB/V 12/15/93
ATOMETRICS INC.
12/17/93 FCM



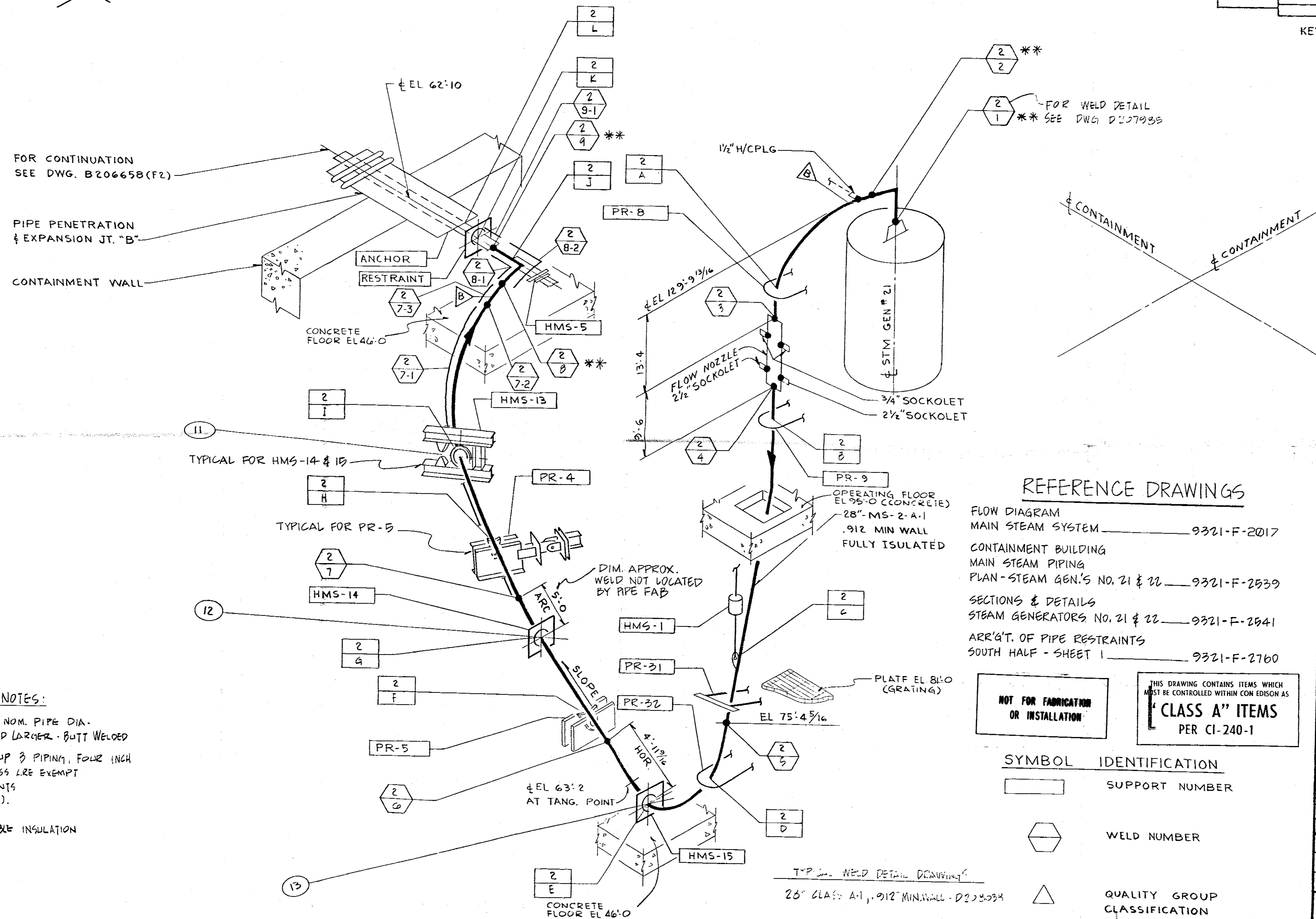
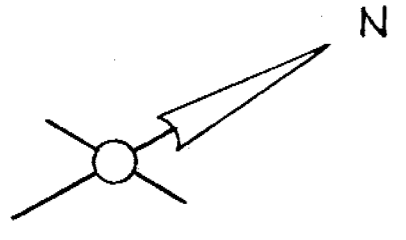
REVISIONS
THIS ISSUE IS NON-CLASS "A" PER CI-240-1. RELEASE FOR RECORD. P.N. 7076 W 11-3-78

THIS REVISION IS NON-CLASS "A" PER CI-240-1. ADDED REF. DRAWINGS. ADDED LATEST REV. NO TO REF. DWG. RELEASE FOR RECORD. P.N. 7070 JR./AS BBASCO SERVICES INC. 1-10-80

THIS REVISION IS NON-CLASS "A" PER CI-240-1. UPDATED DWG. PER INFORMATION RECEIVED FROM FIELD. RELEASE FOR RECORD. P.N. 21308 W6/RC 5-1-84

THIS REV IS NON-CLASS PER CI-240-1 CHANGED DISCIPLINE CODE FROM MJ TO ML. REL. FOR RECOR. P/N 67711-E1

Docket # 25-247
Accession # 94031017
Date 2/28/94
Regulatory Docket File of LR



FOR CONTINUATION SEE DWG. B206658 (F2)

PIPE PENETRATION & EXPANSION JT. "B"

CONTAINMENT WALL

TYPICAL FOR HMS-14 & 15

TYPICAL FOR PR-5

DIM. APPROX. WELD NOT LOCATED BY PIPE FAB

OPERATING FLOOR EL 95'-0 (CONCRETE)
28" MS-2-A-1
.912 MIN WALL
FULLY INSULATED

PLATF EL 81'-0 (GRATING)

EL 63'-2 AT TANG. POINT

CONCRETE FLOOR EL 46'-0

REFERENCE DRAWINGS

- FLOW DIAGRAM MAIN STEAM SYSTEM — 9321-F-2017
- CONTAINMENT BUILDING MAIN STEAM PIPING PLAN - STEAM GEN.'S NO. 21 & 22 — 9321-F-2539
- SECTIONS & DETAILS STEAM GENERATORS NO. 21 & 22 — 9321-F-2941
- ARR'G'T. OF PIPE RESTRAINTS SOUTH HALF - SHEET 1 — 9321-F-2760

NOT FOR FABRICATION OR INSTALLATION

THIS DRAWING CONTAINS ITEMS WHICH MUST BE CONTROLLED WITHIN CON EDISON AS
"CLASS A" ITEMS
PER CI-240-1

SYMBOL IDENTIFICATION

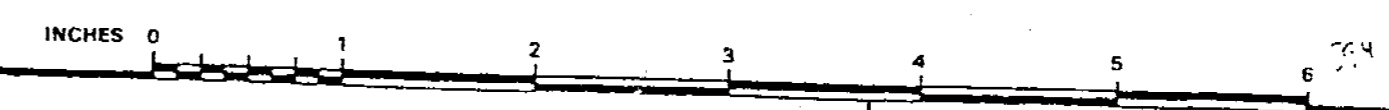
- SUPPORT NUMBER
- WELD NUMBER
- QUALITY GROUP CLASSIFICATION
- INTEGRAL SUPPORT WELD NUMBER
- STRUCTURAL DISCONTINUITY AT WELD PER TABLE IWC-2520 FOOTNOTE 1

GENERAL NOTES:

1. WELDS LESS THAN 2 1/2" NOM. PIPE DIA. SOCKET WELDED; 2 1/2" AND LARGER - BUTT WELDED
2. WELDS IN QUALITY GROUP 3 PIPING, FOUR INCH NOM. PIPE DIA OR LESS ARE EXEMPT FROM N.D.T. REQUIREMENTS PER IWC-1222(a) & (b).
3. (*) - INDICATES REMOVABLE INSULATION

TYPICAL WELD DETAIL DRAWING:
28" CLASS: A-1, .912" MIN. WALL - D203033

ANSTEC APERTURE CARD



NOT FOR FABRICATION OR INSTALLATION

B206657-4
CONSOLIDATED EDISON CO.
OF NEW YORK, INC.

STATION LOCATION INDIAN POINT # 2	
INSERVICE INSPECTION ISOMETRIC OF MAIN STEAM LINE # 2 INSIDE CONTAINMENT SHEET 1 OF 2	
SCALE: NONE	DRAWN BY: J. ALAMILLA
PN: 7076	CHECKED BY: M. STEINAUER
DIAG: MECH	ELECT: 14
STRUCT: 9	OST: 1
GENERAL ENGINEERING	CHIEF DESIGN ENGINEER
MECHANICAL ENGINEERING	MECH PLANT ENGINEER
CIVIL ENGINEERING	PLANT STRUCT ENGINEER
ELECTRICAL ENGINEERING	T & D STRUCT ENGINEER
GAS & STEAM OPERATIONS	STATION ELECT ENGINEER
PRODUCTION	T & D ENGINEER
	STRUCT ENGINEER
	CONVENTIONAL NUCLEAR POWER

ML