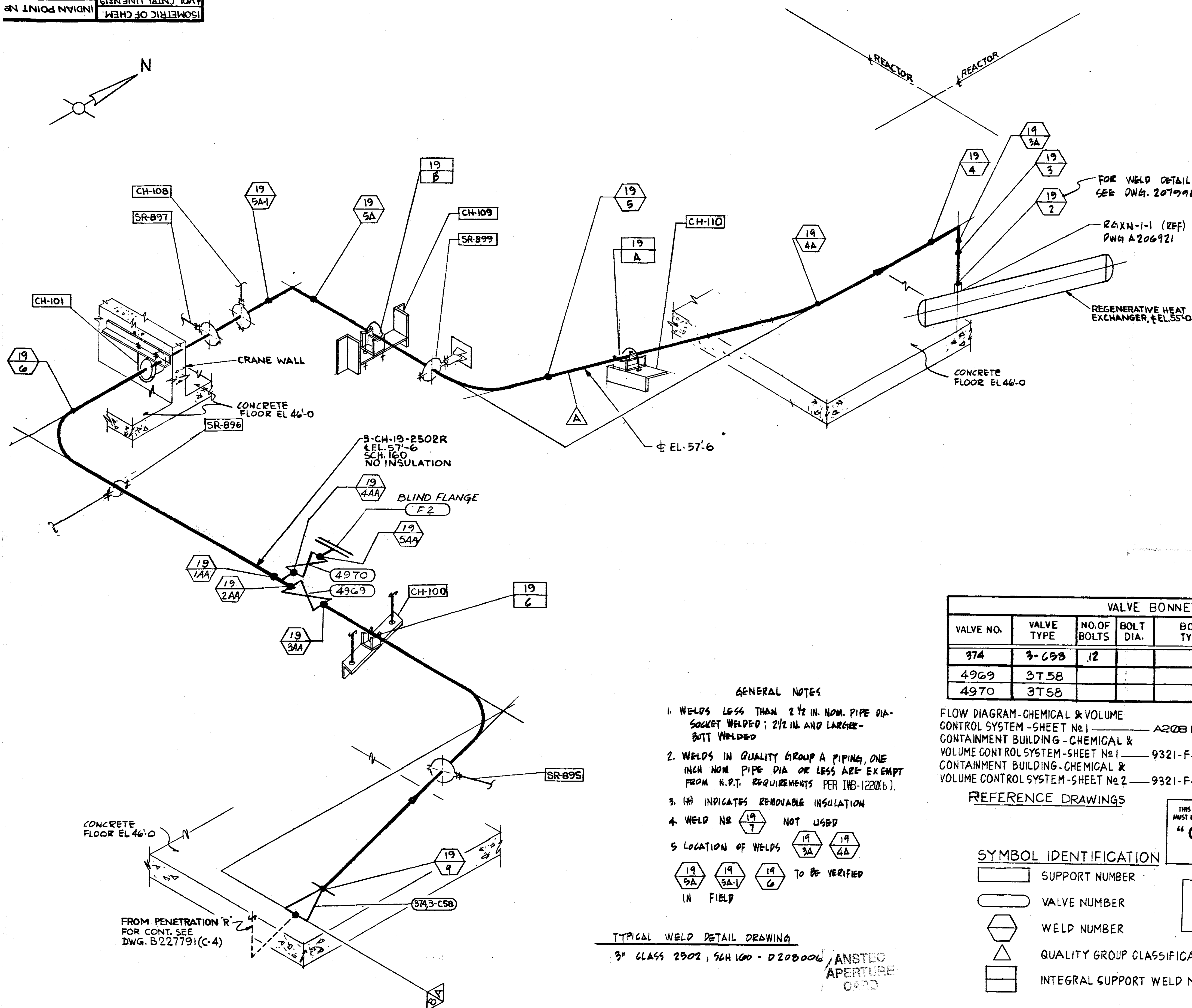
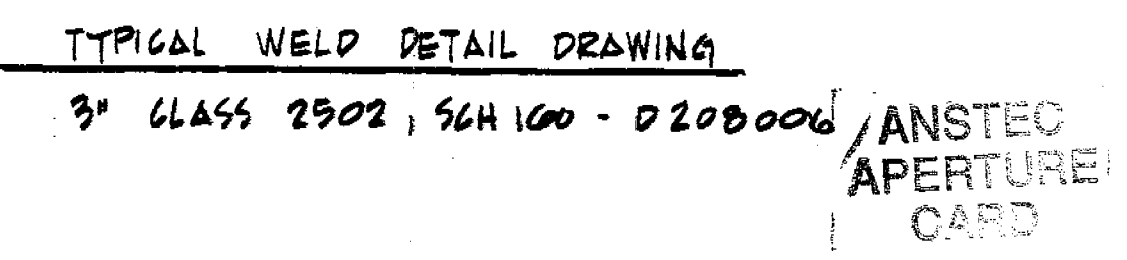


REVISIONS	
11-3-78	0
THIS ISSUE IS NON-CLASS "A" PER CI 240-1. RELEASE FOR RECORD. P.N. 7076 11-3-78	
11-3-78	6
THIS REVISION IS NON CLASS PER CI 240-1. UPDATED DWG. PER AS FOUND CONDITIONS. PKG. 6928. RELEASE FOR RECORD. P.N. 69911-CI AWS/KE	
11-3-78	7
THIS REVISION IS NON-CLASS PER CI 240-1. CHANGED DISCIPLINE CODE FROM ML TO ML. RELEASE FOR RECORD. P.N. 69911-EI	
11-3-78	8
THIS REVISION IS CLASS "A" PER 240-1, UPDATED DWG. PER INSERVICE INSPECTION. FIELD REVISION INFORMATION. RELEASE FOR RECORD. P.N. 69911-EI J.S.	



VALVE BONNET BOLTING						
VALVE NO.	VALVE TYPE	NO. OF BOLTS	BOLT DIA.	BOLT TYPE	VALVE MANUFACTURER	MANUFACTURER DWG. NO.
974	3-C58	12			VELAN	78400
4969	3T58				CONVAL	
4970	3T58				CONVAL	

- GENERAL NOTES**
1. WELDS LESS THAN 2 1/2 IN. NOM. PIPE DIA. SOCKET WELDED; 2 1/2 IN. AND LARGER - BUTT WELDED
 2. WELDS IN QUALITY GROUP A PIPING, ONE INCH NOM. PIPE DIA. OR LESS ARE EXEMPT FROM N.P.T. REQUIREMENTS PER IMB-1220(b).
 3. (R) INDICATES REMOVABLE INSULATION
 4. WELD NO. 19 7 NOT USED
 5. LOCATION OF WELDS 19 3A, 19 4A TO BE VERIFIED IN FIELD



FLOW DIAGRAM - CHEMICAL & VOLUME CONTROL SYSTEM - SHEET No. 1 A208168
 CONTAINMENT BUILDING - CHEMICAL & VOLUME CONTROL SYSTEM - SHEET No. 1 9321-F-2581
 CONTAINMENT BUILDING - CHEMICAL & VOLUME CONTROL SYSTEM - SHEET No. 2 9321-F-2582

REFERENCE DRAWINGS

THIS DRAWING CONTAINS ITEMS WHICH MUST BE CONTROLLED WITHIN CON EDISON AS:
"CLASS A" ITEMS
 PER CI-240-1

SYMBOL IDENTIFICATION

- SUPPORT NUMBER
- VALVE NUMBER
- WELD NUMBER
- QUALITY GROUP CLASSIFICATION
- INTEGRAL SUPPORT WELD NUMBER

NOT FOR FABRICATION OR INSTALLATION

B206684-8
 CONSOLIDATED EDISON CO.
 OF NEW YORK, INC.

STATION	INDIAN POINT NUMBER 2
LOCATION	INSERVICE INSPECTION ISOMETRIC OF CHEMICAL & VOLUME CONTROL LINE No. 19 INSIDE CONTAINMENT
SCALE	NONE
DRAWN BY	C. ZAPATA
CHECKED BY	M. STEINAUER
DATE	11-11-78
PROJECT	7076
DESIGN	28
CONVENTIONAL POWER	
NUCLEAR POWER	

Docket # 50-287
 Accession # 5922101017
 Date 12/28/94
 Regulatory Docket File # of Lit

