

U.S. DEPARTMENT OF THE INTERIOR BUREAU OF LAND MANAGEMENT



Idaho

BLM

Go

[BLM>Idaho>Upper Snake Field Office](#)

[Print Page](#)

Upper Snake Field Office

Idaho

- [+ What We Do](#)
- [+ Visit Us](#)
- [+ Information Center](#)
- [+ Get Involved](#)
- [+ Field Offices](#)
- [+ Contact Us](#)

Hell's Half Acre

General Location: About 17 miles north of Blackfoot, Idaho

Natural Features: This WSA is part of a large lava field that has surface lava flows aged between 4,000 & 5,200 years old. The lava flows resembles a flat moonscape that is interrupted by deep crevices, fissures, ridges, depressions and sparse vegetation. The WSA's large size and rugged volcanic landscape offer excellent solitude opportunities, as well as outstanding dispersed recreation opportunities of hiking, camping and caving in a rugged environment.

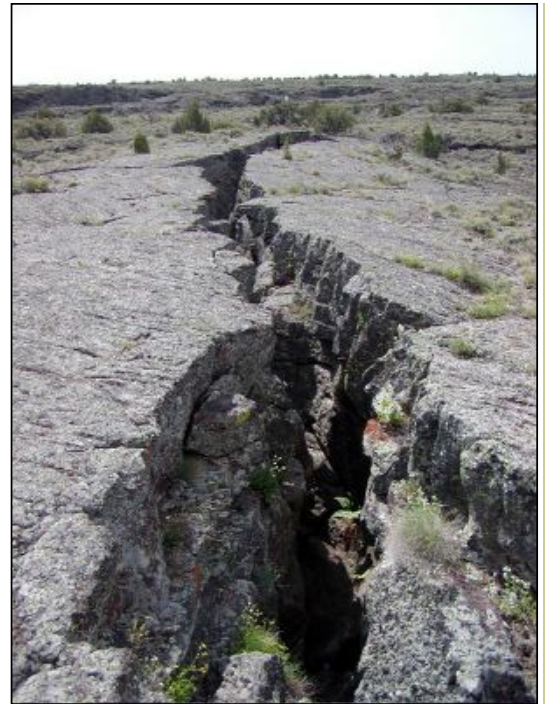
Total Acres: 66,200

Acres Supported by BLM for Wilderness Designation: 66,200 *(plus 2,560 acres of old Idaho state land inholdings that were acquired by BLM through a land exchange in the 1980s)*



Wilderness Study Areas

- Appendicitis Hill
- Black Canyon
- Burn't Creek
- Cedar Butte
- China Cup
- Hawley Mountain
- Hell's Half Acre
- Henry's Lake
- Sand Mountain
- Snake River Islands
- White Knob Mountain



**Upper Snake Field Office | 1405 Hollipark Drive | Idaho Falls, ID 83401
208-524-7500 | Fax: 208-524-7505 | Office hours: 7:45am - 4:30pm, M-F**

Last updated: 12-19-2008

[USA.GOV](#) | [No Fear Act](#) | [DOI](#) | [Disclaimer](#) | [About BLM](#) | [Notices](#) | [Get Adobe Reader®](#)
[Privacy Policy](#) | [FOIA](#) | [Kids Policy](#) | [Contact Us](#) | [Accessibility](#) | [Site Map](#) | [Home](#)