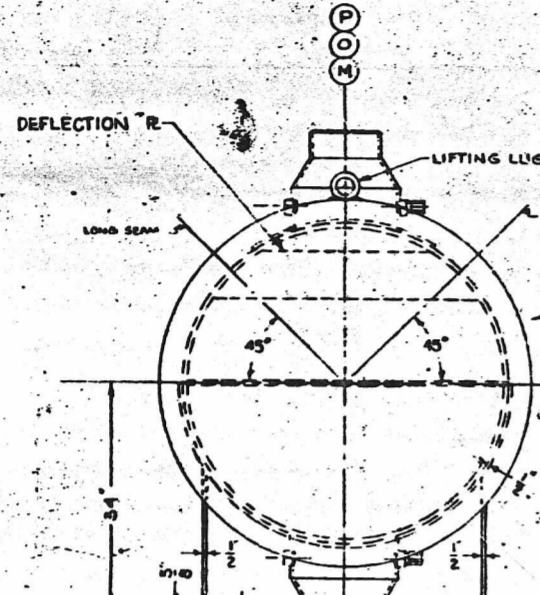
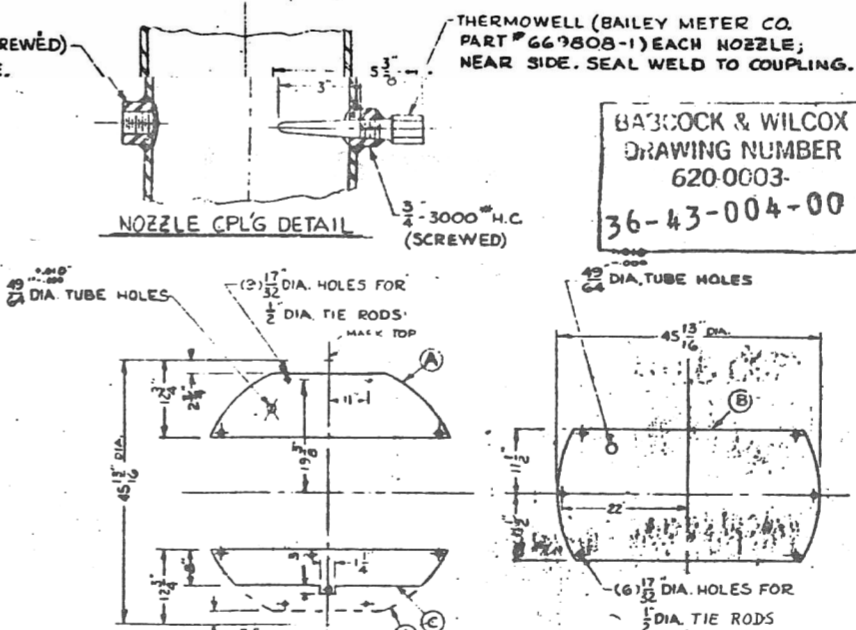
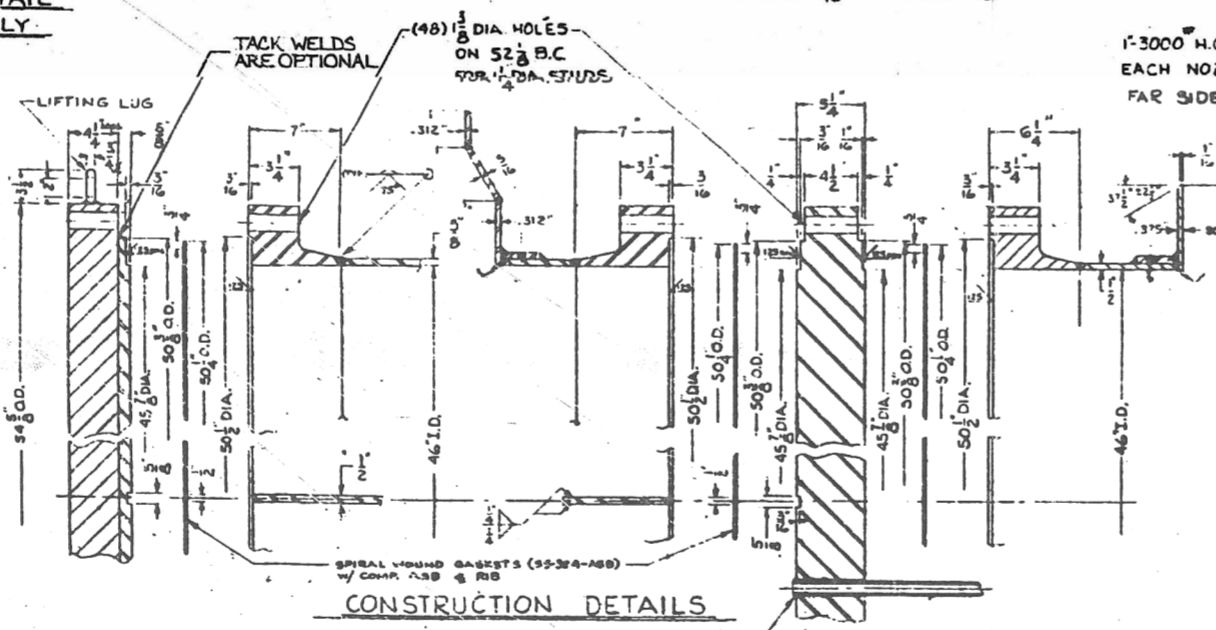
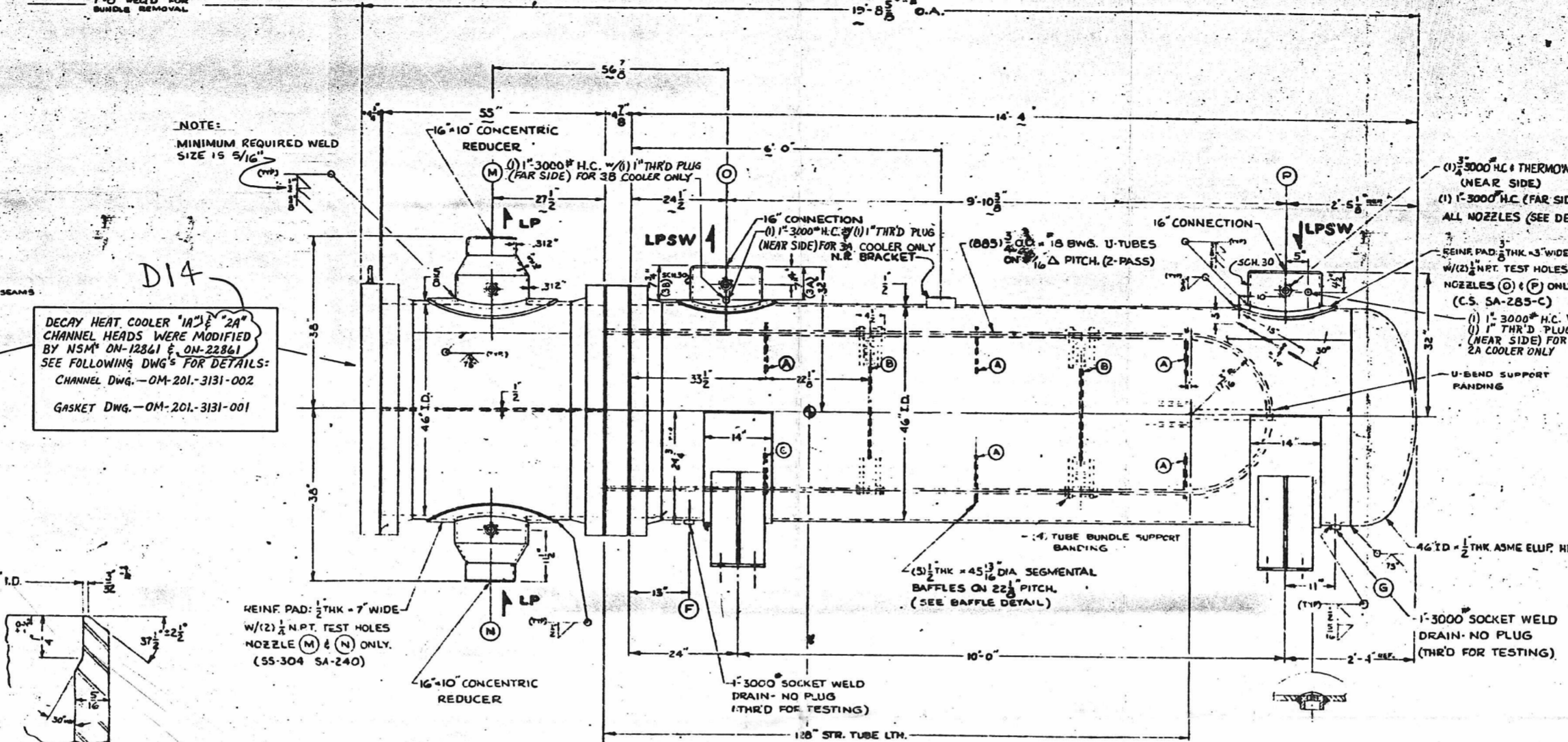
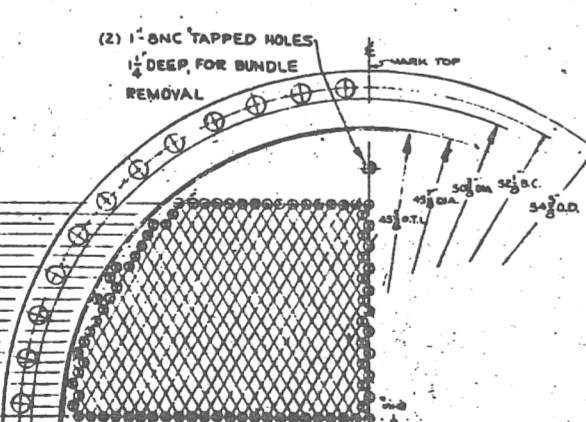
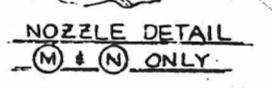


SEISMIC LOAD

	NON-SLOTTED SUPPORT	SLOTTED SUPPORT
VERTICAL	36,000 LBS	5700 LBS
LATERAL	4,700 LBS	743
LONGITUDINAL	5,445 LBS	0
LONGITUDINAL MOMENT	57,200 IN-LBS	0
LATERAL MOMENT	110,450 IN-LBS	17,460 IN-LBS



NOTE: MINIMUM REQUIRED WELD SIZE IS 5/16"
 DECAY HEAT COOLER "M" & "N" CHANNEL HEADS WERE MODIFIED BY NSM ON 12861 & ON 22861. SEE FOLLOWING DWG. FOR DETAILS: CHANNEL DWG. - OM-201-3131-002 GASKET DWG. - OM-201-3131-001



QA CONDITION 1
 NUCLEAR SAFETY RELATED
 OM 201. -0286.001
 BAFCKOX & WILCOX DRAWING NUMBER 620-0003-36-43-004-00

NO.	REVISION	DATE	BY	CHKD.	DATE	APP. DATE	CIVIL ELEC.
D14	REV. PER ON-12861/00, IMP. 10-14-93	JEN	DLR	SPD	SPH	2/2/93	
D13	REV. PER ON-12861/00, IMP. 3-22-93	JEN	DLR	SPD	SPH	2/2/93	

ASME MATERIAL SPECIFICATIONS											
SHELLS	PIPE	ROLL PLATE	BAFFLES	TIE RODS	BRACKETS	NOZZLE PLUGS	NOZZLE NECKS	STUDS	GASKETS		
C.S.	C.S.	C.S.	C.S.	C.S.	C.S.	C.S.	C.S.	SS-304	ASBESTOS		

NOTES

- CONSTRUCTION TO COMPLY WITH ASME CODE SECTION III CLASS I & SEC. III PART 1 (N-1) FOR TUBE SHEET, SEC. III FOR SHELL SIDE, ALTA TEMA 'R' ALL PER LATEST EDITION OF CONTRACT DATE.
- NAME PLATE STAMPING SEE NOTE 17

ATLAS INDUSTRIAL MFG. CO.
 CLIFTON, N.J.

SHELL	150	PSI AT	7500
TUBES	370	PSI AT	3000
SOCKET	370	PSI AT	3000

TEST TEMP 60°F SHELL SIDE TUBE SIDE
 TEST PRESSURE 22.5 PSI @ 675
 CORROSION ALLOW. 0

WEIGHTS:
 EMPTY 24400 LBS.
 FULL OF WATER 36300 LBS.

SANDBLAST ALL EXT. CS SURFACES PER SSPC-SP6 - 6BT FINISH COAT, PRIME COAT CARBID ZINC II - 3 MILS DRY FILM FINISH COAT, PHENOLIC BOND - 4 MILS DRY FILM.

TUBE HOLE DRILLING AND SEAL WELDING TO BE IN ACCORDANCE WITH ATLAS STD 103 (SEE TUBE SHEET FOR TIGHT HALOGEN TEST)

STRESS RELIEVE: NO

RADIOGRAPHY: TUBE SIDE 100% - ALL BUTT.

PRIOR TO HYDRO-TEST THE SHELL SIDE IS TO BE AIR TESTED TO 25 PSIG. THE TUBE SEAL WELDS ARE TO RECEIVE HYDRO-TEST WATER FOR HYDRO-TEST TO HAVE CHLORIDE CONTENT NOT EXCEEDING 0.1 PPM.

CUSTOMER'S INSPECTION: REQ'D

TUBES TO BE EDDY CURRENT TESTED PER ASTM SA-450

ONE DESICCANT (NON-CHLORIDE) ATTACHED TO PROTECTIVE SHIPPING COVERS ON 'INLET' & 'OUTLET' NOZZLES ONLY AND SEALED PRIOR TO SHIPPING. TAG UNIT NOTING EACH NOZZLE COVER THAT CONTAINS DESICCANT BAGS.

CAUTION - REMOVE DESICCANT BAGS BEFORE USE

PERFORMANCE: HEAT LOAD 60 x 10⁶ BTU/HR. SURFACE: 3940 SQ. FT.

SEE SEISMIC CALCULATIONS FOR SUPPORT LOADS

CLEANING TO BE IN ACCORDANCE WITH ATLAS STANDARD #102 REVISED 9-27-65.

PRIOR TO TUBE HOLE DRILLING THE FACE OF THE TUBE SHEET IS TO BE EXAMINED IN ACCORDANCE WITH ATLAS STD 103 FOR LIQUID PENETRANT METHOD. INSPECTION & ACCEPTANCE BY INTERNAL QUALITY CONTROL.

NAME, DATE, SIGNATURE

JOB NO.	CONTRACT NO.	REV. NO.	TAG NO.
1416-1	620-0003-4	884	734
1416-2		885	735
1416-3		886	736
1416-4		887	737

TUBE SEAL WELDS TO BE LIQUID PENETRANT EXAMINED IN ACCORDANCE WITH ATLAS STD 103.

INTERNAL SURFACE OF CHANNEL TO BE SANDBLASTED TO CLEAN WHITE METAL AFTER FABRICATION.

WEIGHT OF SHELL 5477 LBS
 OF TUBE BUNDLE 12,913 LBS
 OF CHANNEL 3,410 LBS
 OF CHANNEL COVER 73,200 LBS

CUSTOMER: BABCOCK & WILCOX COMPANY
 P.O. NO. 004712828 CONTRACT NO. 620-0003-4
 UNITS REQUIRED: SIX
 ATLAS JOB NO. 1416-1,2,3,4

APPROVED
 DUKE POWER CO.
 MAY 04 1994

BABCOCK & WILCOX
 DRAWING NUMBER
 620-0003
 36-43-002

ATLAS INDUSTRIAL MANUFACTURING CO.
 81 SCHWAB PLACE
 CLIFTON, N.J.

46-128, 3940 DECAY HEAT COOLERS

SCALE: 1/4" = 1'-0" A.J.M. 4-2-68 D-1738-8 D14

UNCONTROLLED COPY

D-01