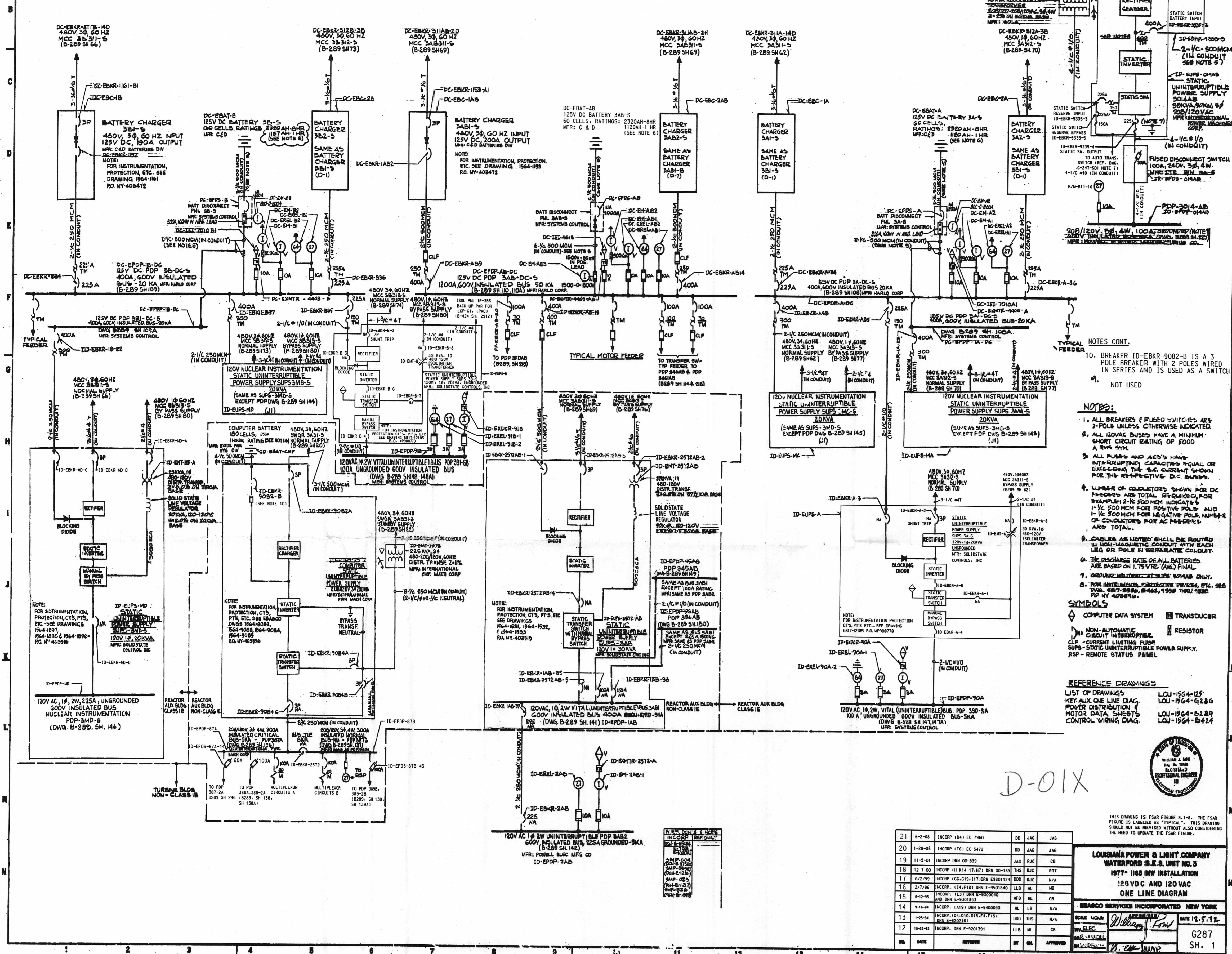


G2875H.1



NOTES CONT.

1. ALL BREAKERS & FUSED SWITCHES ARE 2-POLE UNLESS OTHERWISE INDICATED.
2. ALL 120VAC BUSES HAVE A MINIMUM SHORT CIRCUIT RATING OF 5000 A RMS SYM.
3. ALL FUSES AND ACB'S HAVE INTERRUPTING CAPACITY EQUAL OR EXCEEDING THE S.C. CURRENT SHOWN FOR THE RESPECTIVE D.C. BUSSES.
4. NUMBER OF CONDUCTORS SHOWN FOR DC FEEDERS ARE TOTAL REQUIRED, FOR TRANSFORMER 2-1/2% 500MCM INDICATES 1-1/2% 500MCM FOR POSITIVE POLE AND 1-1/2% 500MCM FOR NEGATIVE POLE. NUMBER OF CONDUCTORS FOR AC FEEDERS ARE TOTAL.
5. CABLES AS NOTED SHALL BE ROUTED IN UNMAGNETIC CONDUIT WITH EACH LEG OR POLE IN SEPARATE CONDUIT.
6. THE DISCHARGE RATE OF ALL BATTERIES ARE BASED ON 1.75 VDC (AVG) FINAL.
7. GROUNDING MEASUREMENT SHALL BE TAKEN ONLY.
8. FOR INSTRUMENTS, FERTILIZER DEVICES, ETC. SEE DATA SHEETS.

NOTES:

1. ALL BREAKERS & FUSED SWITCHES ARE 2-POLE UNLESS OTHERWISE INDICATED.
2. ALL 120VAC BUSES HAVE A MINIMUM SHORT CIRCUIT RATING OF 5000 A RMS SYM.
3. ALL FUSES AND ACB'S HAVE INTERRUPTING CAPACITY EQUAL OR EXCEEDING THE S.C. CURRENT SHOWN FOR THE RESPECTIVE D.C. BUSSES.
4. NUMBER OF CONDUCTORS SHOWN FOR DC FEEDERS ARE TOTAL REQUIRED, FOR TRANSFORMER 2-1/2% 500MCM INDICATES 1-1/2% 500MCM FOR POSITIVE POLE AND 1-1/2% 500MCM FOR NEGATIVE POLE. NUMBER OF CONDUCTORS FOR AC FEEDERS ARE TOTAL.
5. CABLES AS NOTED SHALL BE ROUTED IN UNMAGNETIC CONDUIT WITH EACH LEG OR POLE IN SEPARATE CONDUIT.
6. THE DISCHARGE RATE OF ALL BATTERIES ARE BASED ON 1.75 VDC (AVG) FINAL.
7. GROUNDING MEASUREMENT SHALL BE TAKEN ONLY.
8. FOR INSTRUMENTS, FERTILIZER DEVICES, ETC. SEE DATA SHEETS.

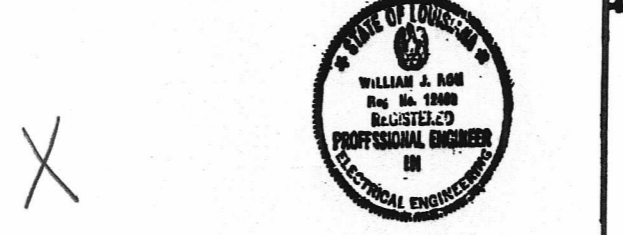
SYMBOLS

- ◊ COMPUTER DATA SYSTEM
- ◻ TRANSUCER
- ⊠ NON-AUTOMATIC CIRCUIT INTERRUPTER
- ⊡ RESISTOR
- ⊞ CIRCUIT INTERRUPTER
- ⊟ CURRENT LIMITING FUSE
- ⊠ STATIC UNINTERRUPTIBLE POWER SUPPLY
- ⊡ REMOTE STATUS PANEL

REFERENCE DRAWINGS

LIST OF DRAWINGS

- LOU-1964-125
- LOU-1964-4280
- LOU-1964-6289
- LOU-1964-6424



THIS DRAWING IS FSAR FIGURE 6.1-4. THE FSAR FIGURE IS LABELED AS 'TYPICAL'. THIS DRAWING SHOULD NOT BE REVISED WITHOUT ALSO CONSIDERING THE NEED TO UPDATE THE FSAR FIGURE.

NO.	DATE	REVISION	BY	CHK.	APPROVED
21	6-2-68	INCORP 1041 EC 790	DO	JAG	JAG
20	1-23-68	INCORP 1761 EC 5472	DO	JAG	JAG
19	11-5-61	INCORP DNN 00-839	JAG	RAC	CB
18	12-7-60	INCORP 14-14-17-17 DNN 00-185	THS	RAC	RTT
17	6-2-59	INCORP 1041, 117 DNN 080124	DOO	RAC	N/A
16	2-7-58	INCORP 1147 DNN 0-250240	LLB	ML	ME
15	6-2-56	INCORP 1157 DNN E-3300000	MFL	ML	CB
14	6-16-54	INCORP 1193 DNN E-3400000	ML	LLB	N/A
13	1-26-54	INCORP 1147 DNN 474737 DNN E-3201181	DOO	THS	N/A
12	10-8-53	INCORP DNN E-3201391	LLB	ML	CB

**LOUISIANA POWER & LIGHT COMPANY**  
**WATERFORD B.E.S. UNIT NO. 3**  
 1977-1166 MW INSTALLATION  
 125VDC AND 120VAC  
 ONE LINE DIAGRAM

REBARCO SERVICES INCORPORATED NEW YORK

DATE 12.5.71  
 SHEET NO. G287 SH. 1  
 FILENAME: IDEAS