

# NUPIC and Change

John Larson  
NUPIC Chairman

**Home Menu**

- [Home](#)
  - [NUPIC Chairman's Message](#)
  - [Charter/Mission Statement](#)
  - [Business Environment](#)
  - [NUPIC Rep Listing](#)
  - [NUPIC Committees](#)
  - [Memorandum of Understanding](#)
  - [Hot Links](#)
  - [Future NUPIC Meetings](#)
  - [ETHANY Additional Services](#)
- 
- Vendor Interface Committee Members**
- [Download NUPIC Documents](#)
  - [QA Manual Submissions](#)
  - [Register for Vendor Performance Monitoring Report](#)

**NUPIC**

**Home**

**Welcome to the Nuclear Procurement Issues Committee (NUPIC) Web Site**



NUPIC is committed to the future of commercial nuclear power. With a proven process for evaluating suppliers to high standards of quality, NUPIC is the NRC Licensee's preferred and cost-effective method of maintaining their Approved Suppliers List. NUPIC Members include all domestic U.S. nuclear utilities, and several international members. If you, as a supplier, have as few as 5 customers who are NRC Licensees or international nuclear plant operators, you are eligible for a NUPIC Audit. Sponsorship by 5 NUPIC Members automatically enrolls suppliers into the NUPIC standard 30-month audit schedule. For more information, contact NUPIC Chairman, John Larson (402-825-5822), or any NUPIC Member listed on this page.

**Logon**

Username:

Password:

**EPRI Logon**

Username:

Password:

**NQML Logon**

Username:

Password:

**Vendor Logon**

Username:

Password:

# NUPIC History

- Established in 1989, successor to NSQAC & CASE
- Procurement Initiative
- Currently providing the process for performing and sharing audits of over 270 nuclear safety-related and commercial suppliers

# The next 20

Our challenges include:

- Aging work force and ability to attract new auditors
- Process streamlining, while retaining critical elements
- Retention of lessons learned and key contributors
- Maintaining independence and a healthy skepticism

# The next 20

Other challenges include:

- Understanding the interface with a global manufacturing network
- Structuring NUPIC to accommodate a wider perspective and need than ever before
- Being critical of our performance and gaining recognition as a Learning Organization

# The next 20

Our opportunities include:

- Excellent cooperation between industry groups, regulators, and vendors
- Recognition of the need for change
- The support of our executives
- Mature technology

# INPO Principles of a Strong Nuclear Safety Culture

- Everyone is personally responsible for nuclear safety
- Leaders demonstrate commitment to safety
- Trust permeates the organization
- Decision-making reflects safety first
- Nuclear technology is recognized as special and unique
- A questioning attitude is cultivated
- Organizational learning is embraced
- Nuclear safety undergoes constant examination

# Everyone is personally responsible for nuclear safety

Vendor  
Quality

NUPIC  
Audit

NRC  
Inspection

Program  
Implementation /  
Product Quality



# Nuclear technology is recognized as special and unique

- Critical oversight of components that contribute to the protection of the reactor core is our “core” value
- Performance-Based Supplier Audit (PBSA) Worksheets focus the audit
- Technical Specialists guide the auditors
- One standard, a high standard, applicable to all

# A questioning attitude is cultivated

- Challenging assumptions (design reviews)
- Investigating anomalies (CAP process)
- Considering possible adverse consequences of planned actions (what can go wrong?)

# NUPIC Performance Trends

- 2009 Leading Finding Categories
  1. Records / Document Control 8% (2010 – 10%)
  2. Failure to Follow Procedures 7% (2010 – 4%)
  3. Audits 6% (2010 – 6%)
  4. **CAP / 10CFR21 Reporting 4% (2010 – 7%)**
  5. **CAP / Inadequate Procedure 4% (2010 – 5%)**
  6. **CAP / Failure to Follow Procedure 4% (2010 – 4%)**
  7. **CAP / Inadequate Dedication 4% (2010 – 3%)**

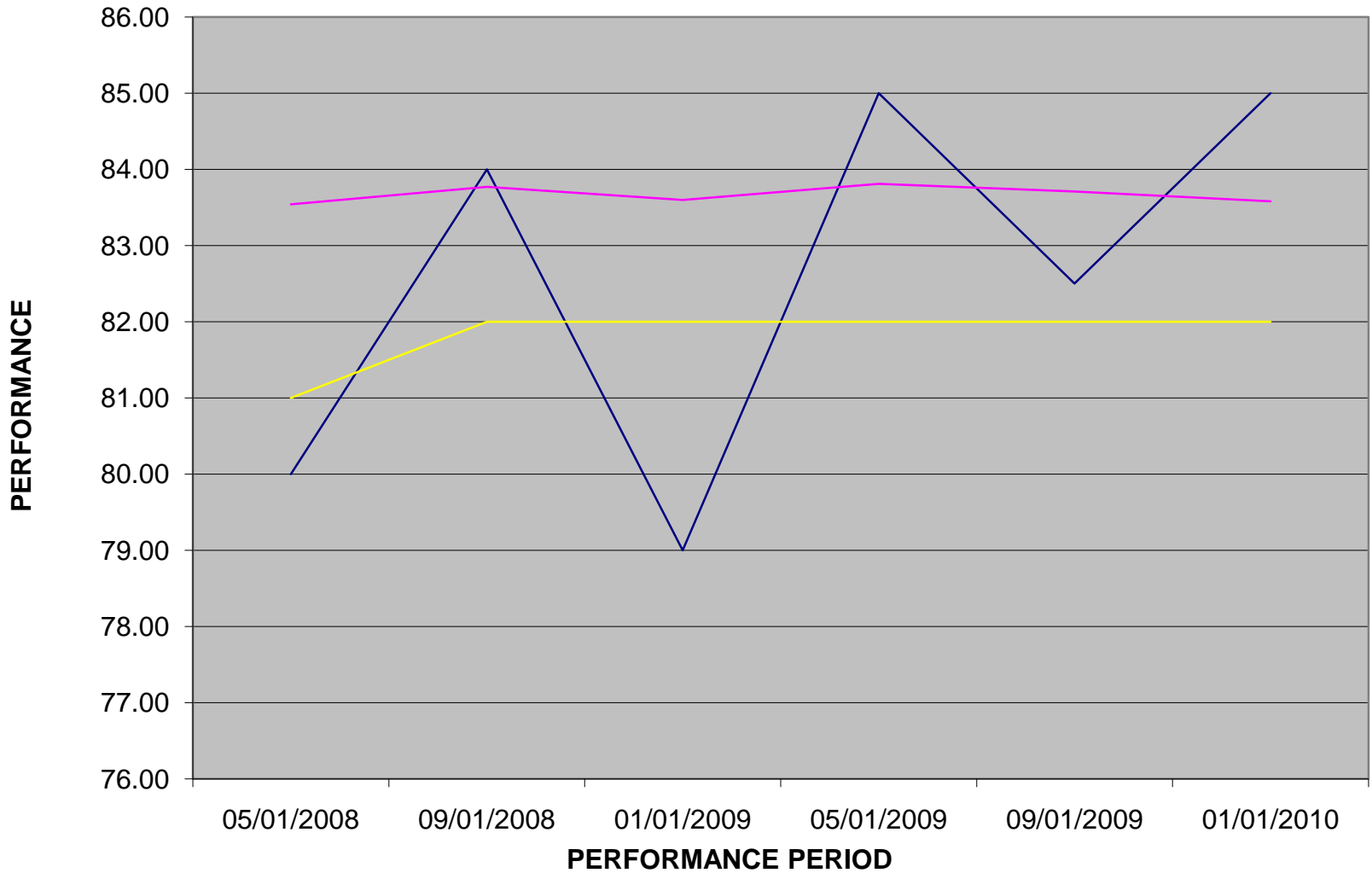
# Vendor Performance Monitoring

- Report 3X / year
- Tracks Vendor Performance in:
  - Receipt Inspection
  - NUPIC Audit Findings and CA Timeliness
  - NRC Inspection Results and 10CFR21 Reports
  - NUPIC Industry Issues
  - INPO OE
- Data is applied to Supplemental (Limited Scope) Audits, based on performance

# Member Performance Monitoring

- Report 3X / year, annual to Management
- Tracks Member Performance in Audit:
  - Planning, Conduct, and Closeout
  - Supplier and Team Feedback
  - Peer Review
  - NUPIC Committee Involvement, Mtg Attendance, and completion of Peer Review Assignments
- Declining performance is addressed by the NUPIC Steering Committee

### NEBRASKA PUBLIC POWER DISTRICT (NPP)



— NPP Performance      — NUPIC Average Performance      — Target Performance

# Cooperation with NRC, EPRI, NEI, NIAC, NQML

- NRC – Mtg participation; 3 observations / year
- EPRI – Mtg participation; Training collaboration; Leading counterfeit parts
- NEI – Access Authorization Audits posted on NUPIC Website (in development)
- NIAC – Vendor Mtg Participation
- NQML – Periodic Oversight

# NUPIC Committees

- New Plant Committee – D. Goolsby, Duke
- Process Management Committee – S. Lusk, TVA
- Nuclear Fuel Committee – J. Wright, ENT
- IT Committee – M. Coren, Duke
- Member Performance Monitoring – D. Stimart, XEL
- Vendor Performance Monitoring – J. Baysinger, FPL



# NUPIC Committees

- Training Committee – C. Wilson, Duke
- Audit Scheduling – J. Simmons, LUM
- Procedure Review – J. Hodges, PGE
- Curriculum Development – D. Stimart, XEL
- Vendor Interface Committee – E. Mayhorn, AUE

“No new nukes, without good, old, nukes!”

# The NUPIC Model

- NUPIC Checklists are available on the website
- Philosophy, Procedures, Contacts are non-proprietary
- Cooperation is encouraged

# Conclusions

The NUPIC Organization will strive to improve the supplier assurance processes through cooperative efforts while minimizing utility O & M costs and improving plant performance.

# Conclusions

The NUPIC Organization will be self-critical and will develop supplier assurance processes through cooperation with others to focus our resources effectively on areas that challenge plant performance.

**QUESTIONS?**