



**Industry and NRC Coordination Meeting
Materials Programs Technical Exchange**

PWROG Materials Subcommittee Overview

Jim Cirilli, PWROG MSC Chairman, Exelon

May 25-26, 2010

NRC/Industry Materials Programs Technical Exchange

PWR Owners Group MSC Agenda

- Materials Subcommittee Core Teams
- MSC Programs Completed in 2009
- MSC Key Technical Programs for 2010 - 2011
- Update of MSC Activities
- Future Meetings

NRC/Industry Materials Programs Technical Exchange

PWROG MSC Key Contacts

Chairman: **Jim Cirilli, Exelon**
610-765-5966
James.Cirilli@exeloncorp.com

Vice Chairmen: **Chris Kiefer, AmerenUE**
573-676-8792
crkiefer@cal.ameren.com

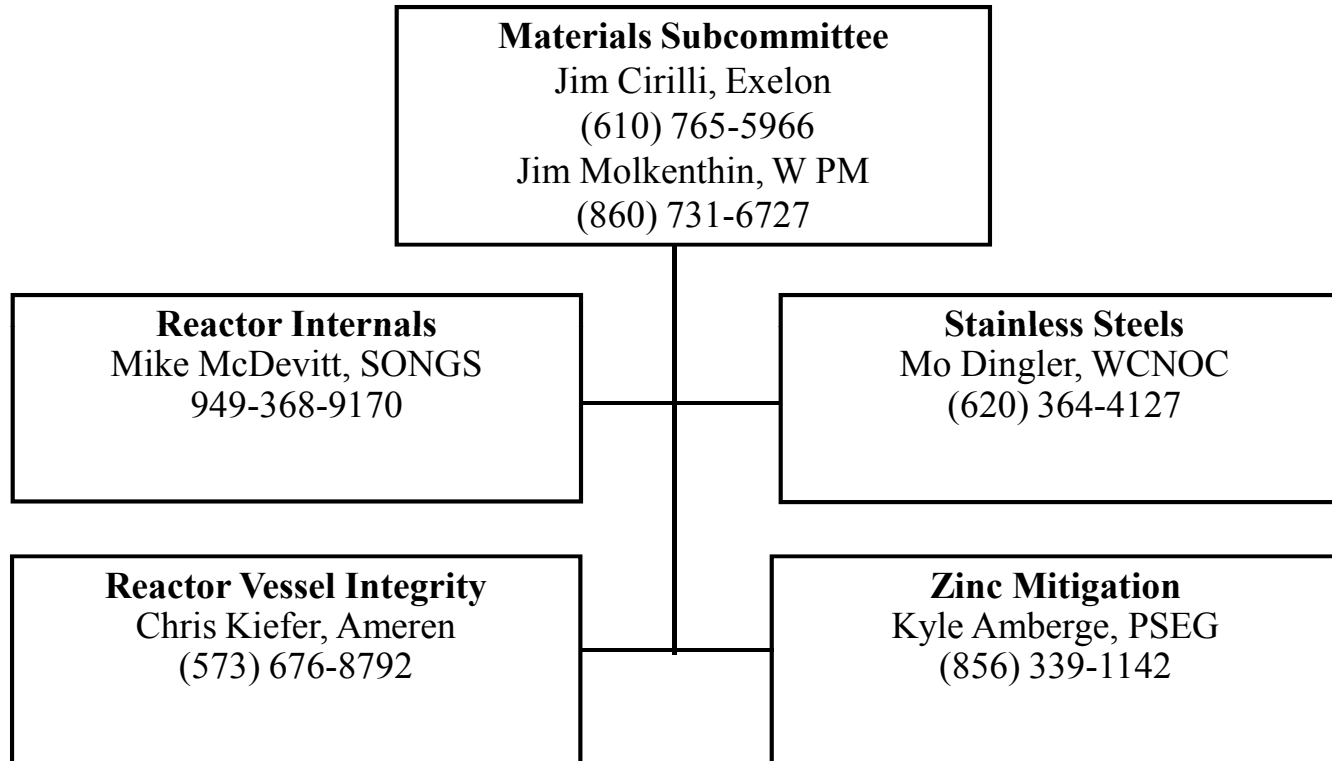
Kyle Amberge, PSEG
856-339-1142
Kyle.Amberge@pseg.com

PMO Project Manager, : **Jim Molkenthin**
Westinghouse **860-731-6727**
molkenjp@westinghouse.com

AREVA NP Contacts : **Matt Devan**
434-832-3160
Matt.Devan@areva.com

Alan Thomas
434-832-2989
Alan.Thomas@areva.com

NRC/Industry Materials Programs Technical Exchange Owners Group Core Team Organization



NRC/Industry Materials Programs Technical Exchange

PWROG Programs Completed in 2009

- PA-MS-C-0423; “Flaw Evaluation of CE Design RCP Suction and Discharge, and Safety Injection Nozzle Dissimilar Metal Welds” (Westinghouse WCAP-16925-P)
- PA-MS-C-0525; “Flaw Evaluation of CE Design RCP Suction and Discharge Nozzle Dissimilar Metal Welds, Phase II Study” (Westinghouse WCAP-17128-NP)
- PA-MS-C-0444; “Fracture Mechanics Evaluation Summary of B&W Design Pump Nozzle DM Welds” (AREVA report No. 86-9114013-000)
- PA-MS-C-0442; “Demonstration of CRDM OD Defect Detection with Weld Inlay Repairs” (Westinghouse Technical Justification Document WDI-TJ-1039, Rev 0)
- PA-MS-C-0163R2; “Point Beach Unit 1 Upper Internals Guide Tube - Guide Card Wear Evaluation” (Westinghouse WCAP-17020-P)

NRC/Industry Materials Programs Technical Exchange

PWROG Programs Completed in 2009 (Continued)

- PA-MS-C-0163R2; “Vandellós II Upper Internals Guide Tube - Guide Card Evaluation” (Westinghouse WCAP-17088-P)
- PA-MS-C-0473; “Reactor Internals Acceptance Criteria Methodology and Data Requirements” (Westinghouse WCAP-17096)
- PA-MS-C-0257; “PWSCC Crack Initiation Testing of Farley Unit 2 Alloy 600 CRDM Penetrations – Task 3” (Westinghouse report STD-MCE-09-136, Rev 0)
- PA-MS-C-0120 Task 4; “Plant Specific Evaluations to Extend the RV ISI Interval from 10 to 20 Years” (Comanche Peak 1-2, Palo Verde 1-3, Salem1-2, McGuire 1-2, Catawba 1-2, TMI-1, ANO-2 and Farley-2)

NRC/Industry Materials Programs Technical Exchange

PWROG MSC Key Focus Activities for 2010 - 2011

The MSC currently has 20 active Project Authorizations.

11 Cafeteria; 9 Generic

Key 2010 - 2011 Programs Include:

- *Proactive Program for Measurement of Westinghouse Upper Internals Guide Card Wear (PA-MS-0163)*
- *Westinghouse Upper Internals Guide Tube Card Wear - Fleet-Wide Operational Projections and Contingencies (PA-MS-0688)*
- *Review of B&W PWR Internals Fabrication Records for MRP-227 AMP (PA-MS-0573)*
- *RV Internals Baseline Information to Support AMP's [W; CE] (PA-MS-0572)*
- *Reactor Internals Operating Experience Review, Risk Ranking & Response Planning (PA-MS-0568)*

Note: Bold and Italic will be discussed in later presentations.

NRC/Industry Materials Programs Technical Exchange

PWROG MSC Key Focus Activities for 2010 - 2011

Key 2010 - 2011 Programs Include (Continued):

- RV Integrity Industry Long Term Planning and Core Team Activities (PA-MS-0571)
- *Implementation of Coordinated Surveillance Capsule Plan (PA-MS-0553)*
- RV ISI Interval Extension Task 4 Plant Specific Activities (PA-MS-0120R4)
- *SCC of Stainless Steel Materials Issues Industry Participation and Strategic Planning Support (PA-MS-0474)*
- Fracture Mechanics Evaluation of CE Design Pump DM Welds; Phase 3 (PA-MS-0525R1)
- Fracture Mechanics Evaluation of B&W Design Pump Nozzle DM Welds (PA-MS-0444R2)
- PWSCC Crack Initiation Testing of Farley 2 Alloy 600 CRDM Penetrations; Phase 4 Testing (PA-MS-0257)

NRC/Industry Materials Programs Technical Exchange

Update of PWROG MSC Activities

- Member of Materials APC as a result of NEI 03-08 Change Management Plan
 - Attended January 2010 MAPC meeting
- NRC Interactions:
 - Submitted revised coordinated fleet implementation plan for RPV ISI Interval Extension
 - Guide Card Wear presentation
 - Meeting to discuss PA-MS-0440; ISI Interval Extension for Non-Alloy 82/182 RPV Nozzle Piping Welds
- Issued Stainless Steel ODS-CC White Paper to utility members
- Areas of Coordination & Strategic Planning with MRP
 - ✓ Reactor Vessel Integrity
 - ✓ Reactor Internals
 - ✓ Stainless Steel Degradation

NRC/Industry Materials Programs Technical Exchange

PWROG MSC 2010 Meeting Dates

- August 17-19, Shell Beach, CA
 - Cliffs Resort
- December 7-9 , Marco Island, FL
 - Marco Island Marriott

NRC/Industry Materials Programs Technical Exchange
PWROG Materials Subcommittee

Questions?