

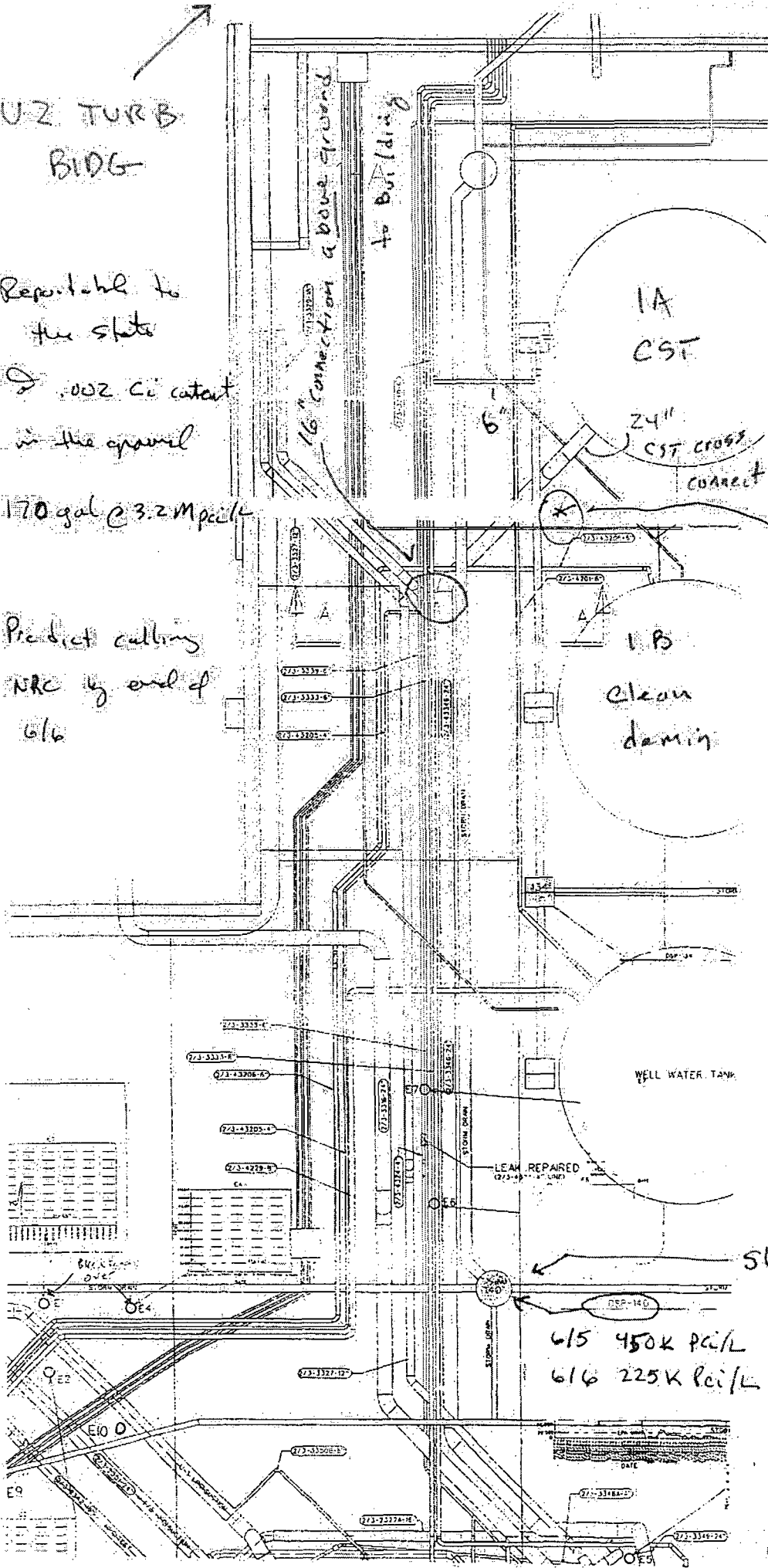
U2 TURB
BIDG

Reputable to
the state

0.002 Ci content
in the gravel

170 gal @ 3.2 M pci/L

Predict cutting
NRC by end of
6/6



616109

18
N

- IA CST IS CROSS-
connected to 2/3 CSTs

- Asbestos insulation
has to be removed
to perform G-scan
of Line

* shallow well 6/6
3.26 M pci/L

DSP 132 unit L drain to
mike canal

6/6 111K pci/L

UL
mike canal

1800 pci/L - @ crib house

600 pci/L - @ Bridge

200 pci/L - @ Log Boom

Storm drain line is blocked off

615 450K pci/L

616 225K pci/L

2/3 CST's

D-18