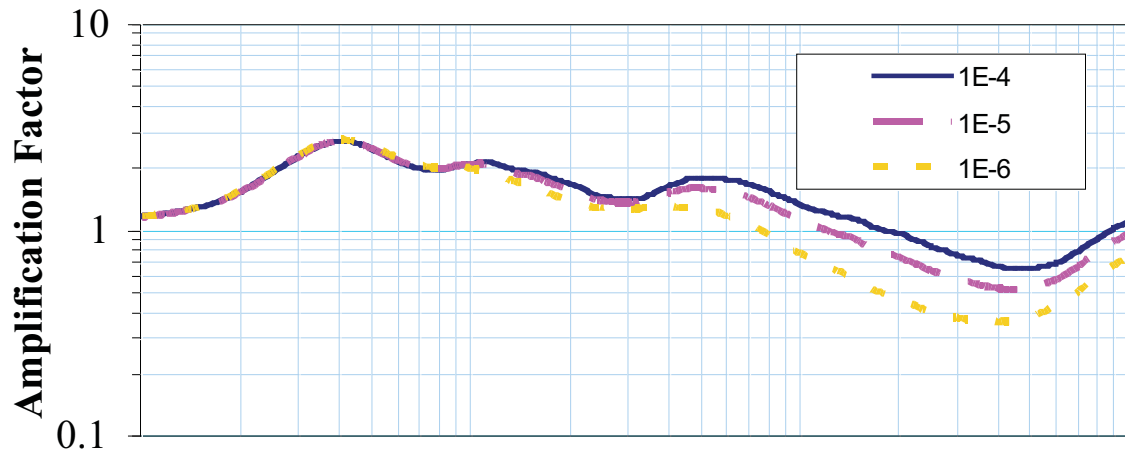
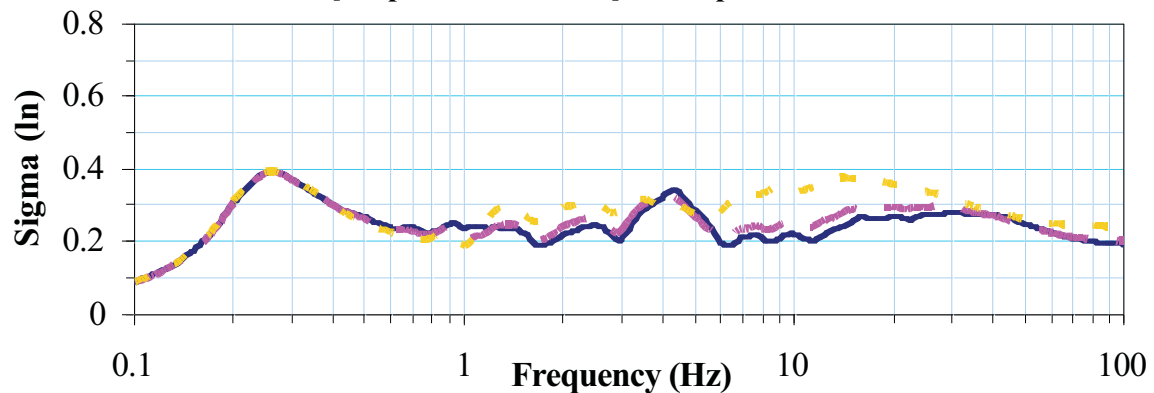


## Median Amplification Factors GMRS LF



## Std. Dev. of $\ln[\text{Amplification Factor}]$ for Hope Creek GMRS LF



Note: it is assumed that the logarithmic mean and median values are identical.

PSEG Power, LLC

PSEG Site ESPA  
Part 2, Site Safety Analysis Report

Logarithmic Mean Amplification  
Factors for Low-Frequency (LF) Rock  
Inputs and Associated Logarithmic  
Standard Deviations

FIGURE 2.5.2-43 Rev 0