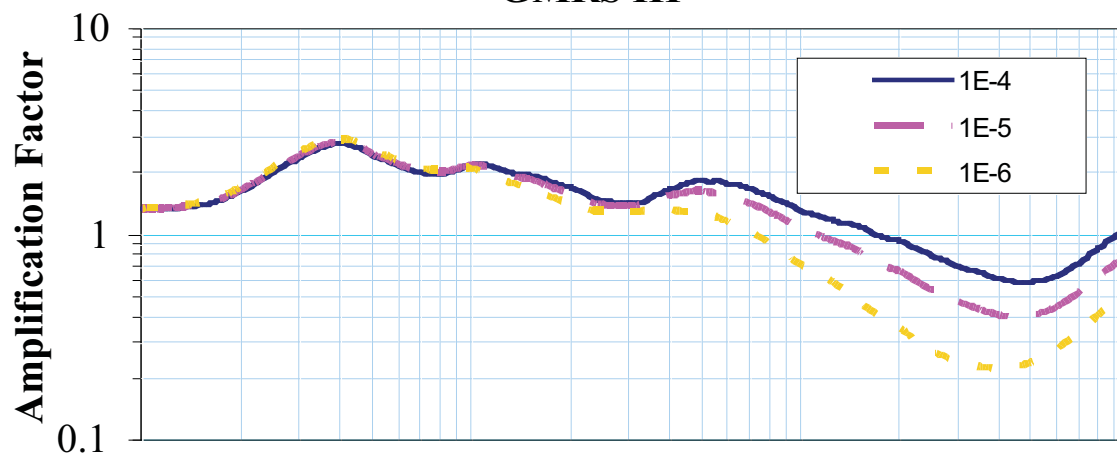
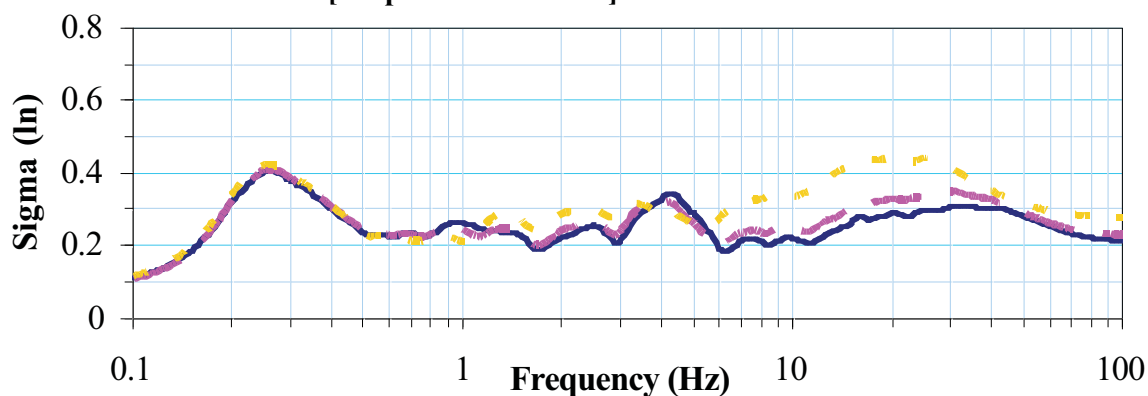


Median Amplification Factors GMRS HF



Std. Dev. of ln[Amplification Factor] GMRS HF



Note: it is assumed that the logarithmic mean and median values are identical.

PSEG Power, LLC

PSEG Site ESPA
Part 2, Site Safety Analysis Report

Logarithmic Mean Amplification
Factors for High-Frequency (HF)
Rock Inputs and Associated Logarithmic
Standard Deviations

FIGURE 2.5.2-42 Rev 0