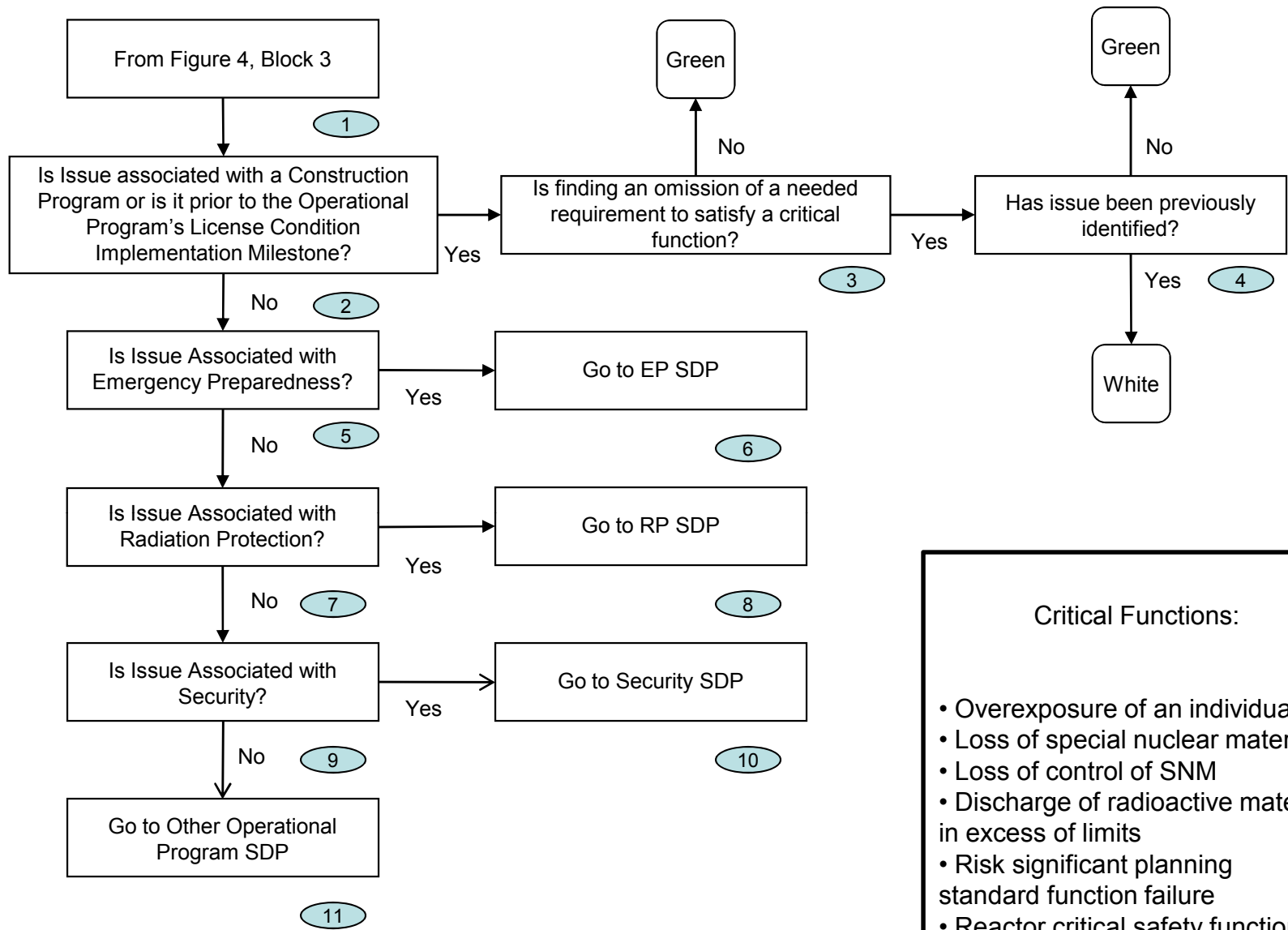


Draft Construction Finding SDP – Figure 4



Draft Construction/Operational Program SDP – Figure 5

- Critical Functions:
- Overexposure of an individual
  - Loss of special nuclear material
  - Loss of control of SNM
  - Discharge of radioactive material in excess of limits
  - Risk significant planning standard function failure
  - Reactor critical safety functions as defined in EOPs