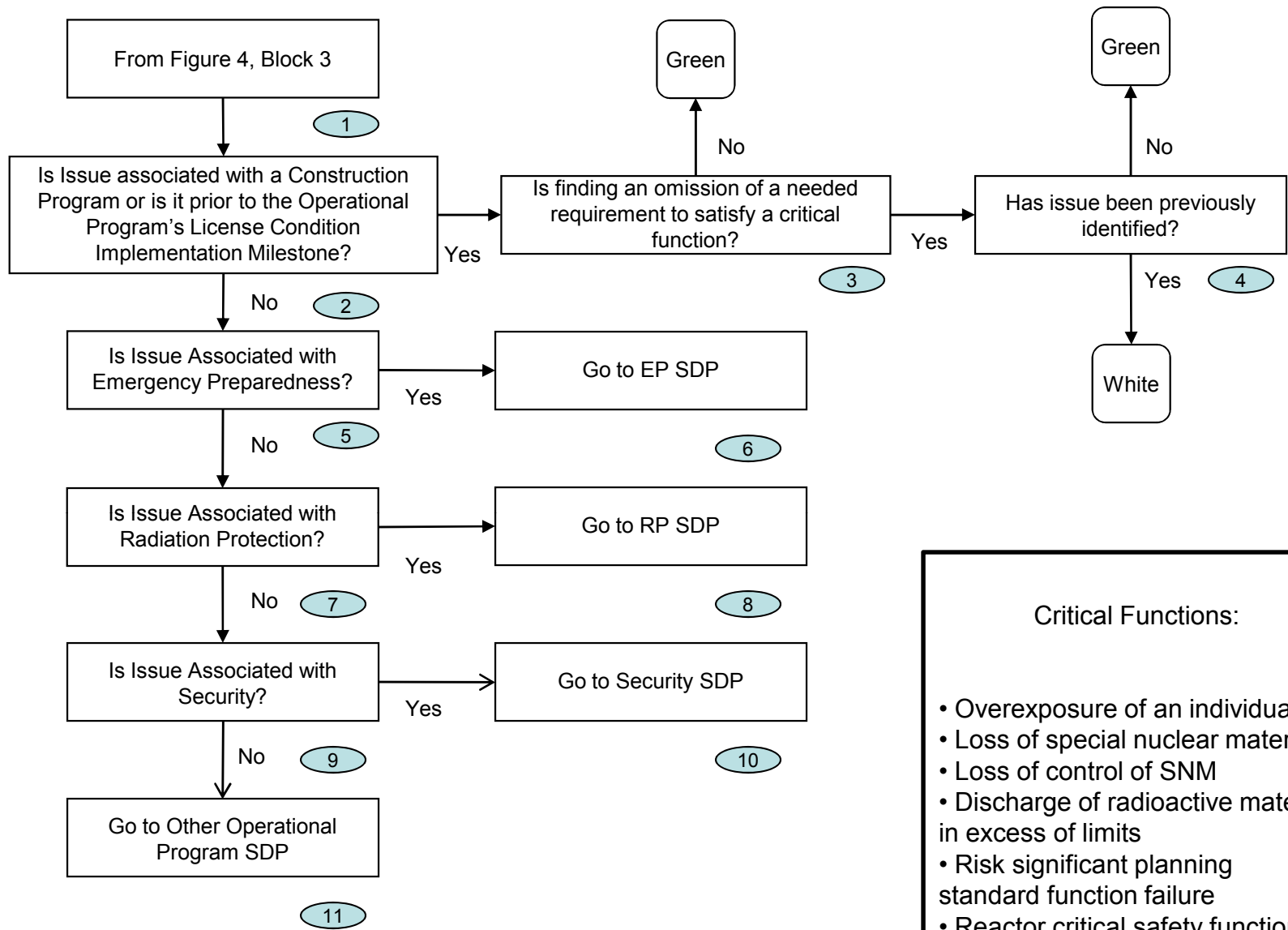


Draft Construction Finding SDP – Figure 4



- Critical Functions:
- Overexposure of an individual
 - Loss of special nuclear material
 - Loss of control of SNM
 - Discharge of radioactive material in excess of limits
 - Risk significant planning standard function failure
 - Reactor critical safety functions as defined in EOPs

Draft Construction/Operational Program SDP – Figure 5