



Westinghouse Electric Company  
Nuclear Power Plants  
P.O. Box 355  
Pittsburgh, Pennsylvania 15230-0355  
USA

U.S. Nuclear Regulatory Commission  
ATTENTION: Document Control Desk  
Washington, D.C. 20555

Direct tel: 412-374-6206  
Direct fax: 724-940-8505  
e-mail: sisk1rb@westinghouse.com

Your ref: Docket No. 52-006  
Our ref: DCP\_NRC\_002880

May 17, 2010

Subject: AP1000 Response to Request for Additional Information (SRP 6)

Westinghouse is submitting a response to the NRC request for additional information (RAI) on SRP Section 6. This RAI response is submitted in support of the AP1000 Design Certification Amendment Application (Docket No. 52-006). The information included in this response is generic and is expected to apply to all COL applications referencing the AP1000 Design Certification and the AP1000 Design Certification Amendment Application.

Enclosure 1 provides the response for the following RAI(s):

RAI-SRP6.2.4-SPCV-04

Questions or requests for additional information related to the content and preparation of this response should be directed to Westinghouse. Please send copies of such questions or requests to the prospective applicants for combined licenses referencing the AP1000 Design Certification. A representative for each applicant is included on the cc: list of this letter.

Very truly yours,

A handwritten signature in black ink, appearing to read 'Robert Sisk'.

Robert Sisk, Manager  
Licensing and Customer Interface  
Regulatory Affairs and Strategy

/Enclosure

1. Response to Request for Additional Information on SRP Section 6

cc: D. Jaffe - U.S. NRC 1E  
E. McKenna - U.S. NRC 1E  
P. Donnelly - U.S. NRC 1E  
T. Spink - TVA 1E  
P. Hastings - Duke Power 1E  
R. Kitchen - Progress Energy 1E  
A. Monroe - SCANA 1E  
P. Jacobs - Florida Power & Light 1E  
C. Pierce - Southern Company 1E  
E. Schmiech - Westinghouse 1E  
G. Zinke - NuStart/Entergy 1E  
R. Grumbir - NuStart 1E  
D. Lindgren - Westinghouse 1E  
D. Behnke - Westinghouse 1E

ENCLOSURE 1

Response to Request for Additional Information on SRP Section 6

# AP1000 TECHNICAL REPORT REVIEW

## Response to Request For Additional Information (RAI)

RAI Response Number: RAI-SRP6.2.4-SPCV-04  
Revision: 0

### **Question:**

In a letter dated 14 May 2007, Westinghouse submitted responses to all the NRC requests for additional information (RAIs) on AP1000 Standard Combined License Technical Report (TR) 97, APP-GW-GLN-022, Rev. 1, "DAS Platform Technology and Remote Indication Change" received to date. The RAI responses were submitted as part of the NuStart Bellefonte COL Project (NRC Project Number 740). The information included in the responses is generic and is expected to apply to all COL applications referencing the AP1000 Design Certification.

In this report, Westinghouse LLC identifies and justifies standard changes to the AP1000 Design Control Document (DCD), revision 15. These changes include relocating the Diverse Actuation System (DAS) Squib Valve Control Cabinet (DAS-J3-003) and adding the DAS Instrumentation Cabinet (DAS-JD-004) to the southern section of the auxiliary building. The DAS is a non safety related system. These changes necessitate the addition of a containment electrical penetration, P03.

Based on its review, the SPCV staff found the proposed change as described in report, TR-97, Revision 1, which adds an additional containment electrical penetration in accordance with previously acceptable design criteria for electrical penetrations, namely ASME Code Section III, Seismic Category I, non Class 1E qualified, harsh environment qualified, which would also apply to the new electrical penetration, P03.

The SPCV staff found that Westinghouse's proposed modification to the AP1000 containment isolation system design with respect to the addition of an electrical penetration, as described in TR-97 was consistent with the previously approved criteria and was, therefore, acceptable.

Westinghouse, in DCD revision 16, revised Tier 1, Table 2.2.1-1 and Figure 2.2.1-1 to reflect this approved change. However, in DCD revision 17, Figure 2.2.1-1 was revised again.

The DCD Rev. 17, Tier 1, Figure 2.2.1-1 with the note "1 of 24 and 1 spare" is incorrect and should be replaced by the DCD Rev. 16, Figure 2.2.1-1 where the note "1 of 25" is indicated next to the typical electrical penetration. This should be corrected.

### **Westinghouse Response:**

Westinghouse will revise the note on DCD, Tier 1, Figure 2.2.1-1 to indicate "1 of 25" next to the typical electrical penetration.

# AP1000 TECHNICAL REPORT REVIEW

## Response to Request For Additional Information (RAI)

**Design Control Document (DCD) Revision:**

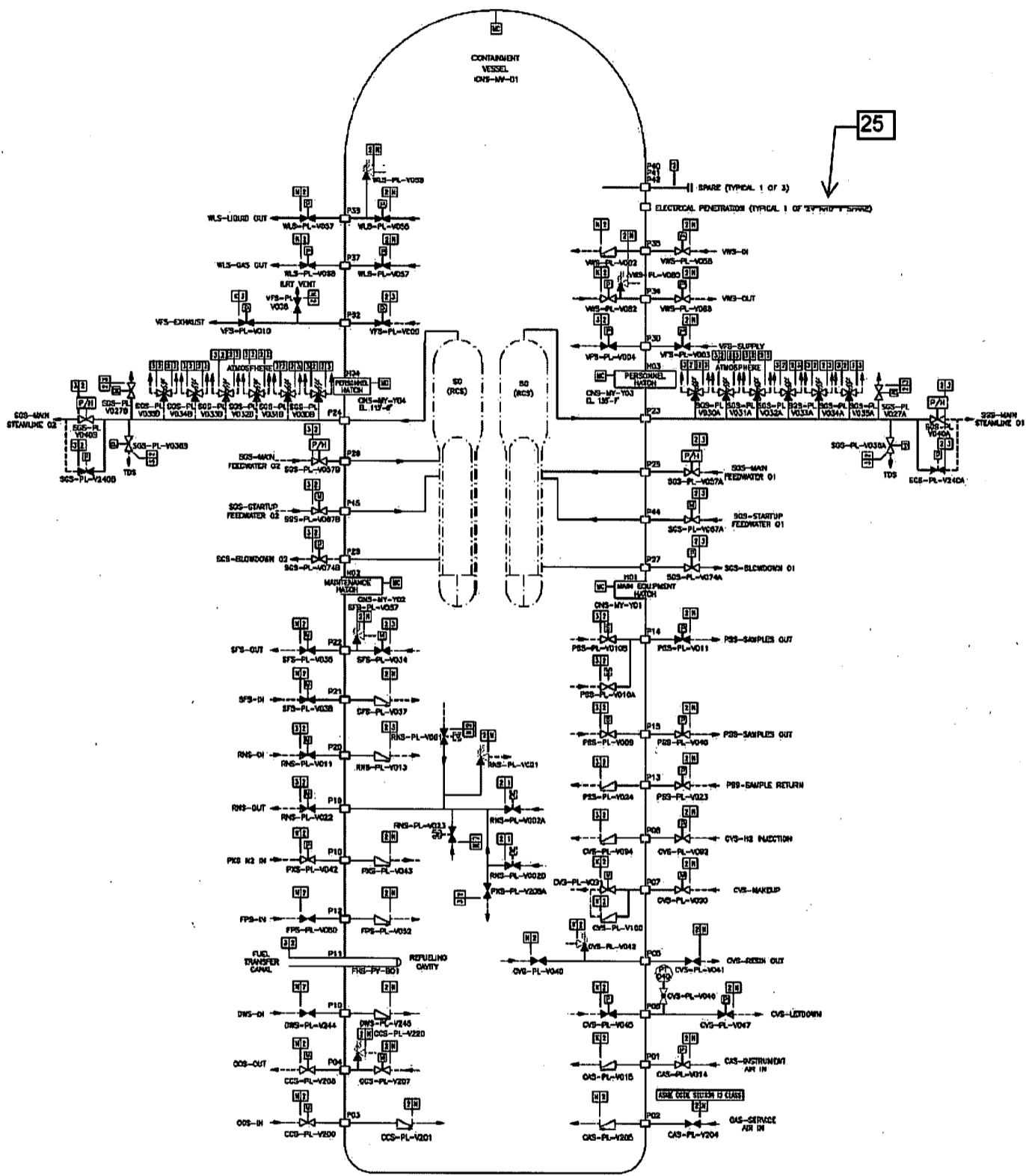
DCD markup is shown on the next page.

**PRA Revision:**

None

**Technical Report (TR) Revision:**

None



NOTE: PENETRATION CONNECTIONS, TEST, DRAIN OR VENT ARE NOT WITHIN THE SCOPE OF THIS FIGURE.

Figure 2.2.1-1  
Containment System