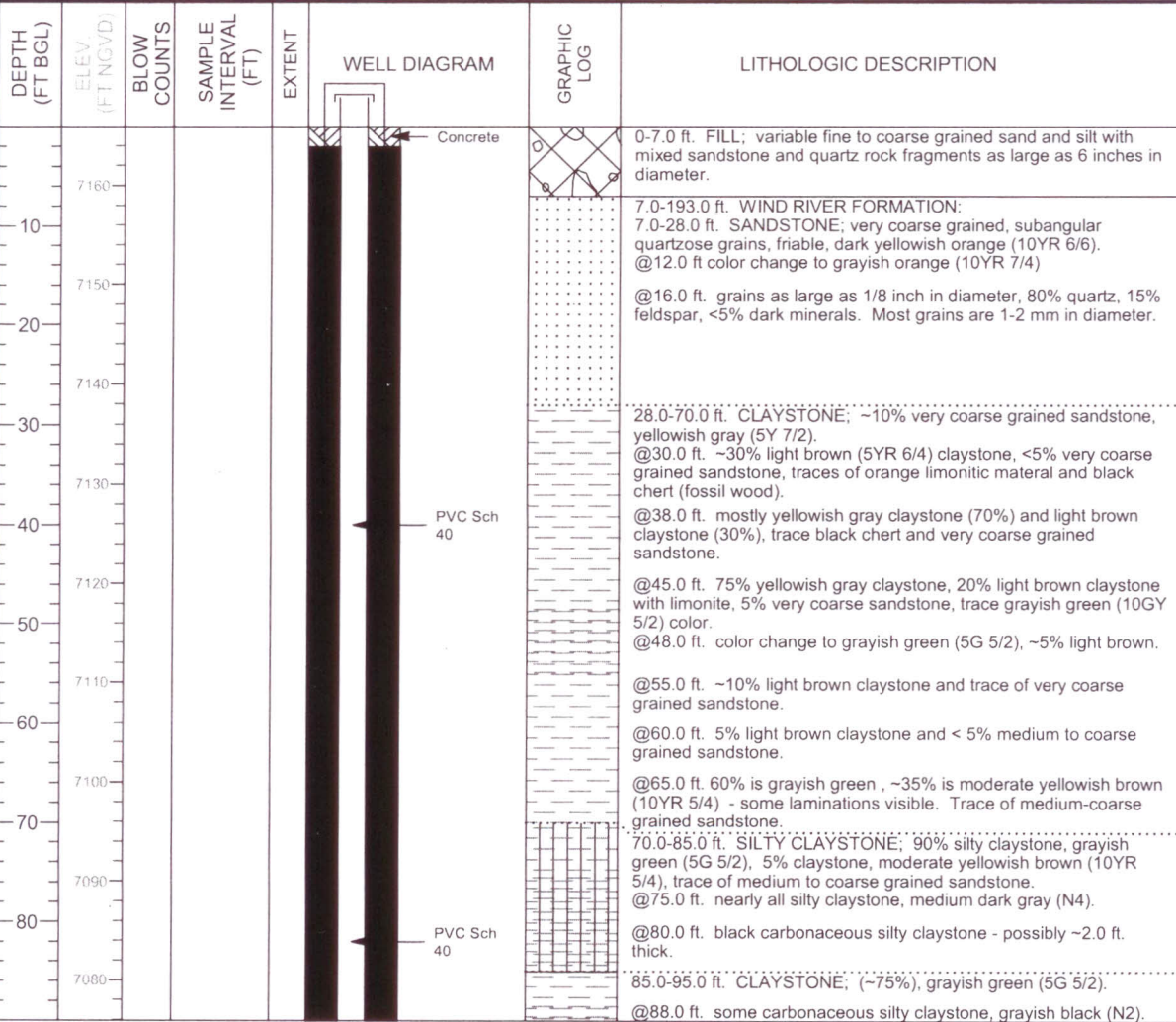


MONITORING WELL COMPLETION LOG SBS01-101-SC

PROJECT LM	WELL NUMBER SBS01-101-SC	DATE DRILLED 9/9/2008
LOCATION WY	NORTH COORD. (FT) 613208.13	SURFACE ELEV. (FT NGVD) 7165.92
SITE Shirley Basin South Disposal Site	EAST COORD. (FT) 808094.78	TOP OF CASING (FT) 7168.35
DRILLING METHOD Mud Rotary	HOLE DEPTH (FT BGS) 193.00	MEAS. PT. ELEV. (FT) 7168.35
DRILL COMPANY Boart Longyear	WELL DEPTH (FT BGS) 191.00	SLOT SIZE (IN) 0.020
RIG TYPE TH-60	WATER LEVEL (FT BGS)	BIT SIZE(S) (IN) 8.5

WELL INSTALLATION	INTERVAL (FT BGS)	WATER LEVEL DATE
SURFACE CASING:		DRILLER Neaman, J.
BLANK CASING: 4 in. PVC Sch 40	-2.43 to 173.0	LOGGED BY Goodknight, C.
WELL SCREEN: 4 in. 0.02" Slotted PVC	173.0 to 188.0	SAMPLING METHOD GRAB
SUMP/END CAP: 4 in. PVC Sch 40	188.0 to 191.0	DATE DEVELOPED
SURFACE SEAL: Concrete	0.0 to 2.0	REMARKS Colors are of wet material.
GROUT: Bentonite	2.0 to 162.0	
SEAL:		
UPPER PACK:		
LOWER PACK: 10-20 Silica Sand	162.0 to 191.0	



Stoller

U.S. DEPARTMENT OF ENERGY
GRAND JUNCTION, COLORADO

PAGE 1 OF 2 11/13/2009

ALL MONITORING WELLS SBS01-5713.GPJ, SHIP.GPJ, 11/13/2009

MONITORING WELL COMPLETION LOG SBS01-101-SC

PROJECT LM WELL NUMBER SBS01-101-SC
 SITE Shirley Basin South Disposal Site DATES DRILLED 9/9/2008

Continued from Previous Page

DEPTH (FT BGL)	ELEV. (FT NGVD)	BLOW COUNTS	SAMPLE INTERVAL (FT)	EXTENT	WELL DIAGRAM	GRAPHIC LOG	LITHOLOGIC DESCRIPTION
100	7070						95.0-100.0 ft. SILTY CLAYSTONE AND CLAYSTONE; equal amounts, claystone is grayish green (5G 5/2), and silty claystone is grayish black (N2), trace yellow orange limonitic claystone.
							100.0-105.0 ft. SILTY CLAYSTONE; ~60% is medium dark gray (N4), and ~40% is grayish brown (5YR 3/2).
							105.0-153.0 ft. CLAYSTONE;
							@105.0 ft. ~80% claystone, greenish gray (5G 6/1) and, 10% medium to coarse grained sandstone.
							@110.0 ft. nearly all greenish gray claystone.
120	7050				PVC Sch 40		@120.0 ft. trace of medium to coarse grained sandstone.
130	7040						@125.0 ft. slightly more (1-2%) medium to coarse grained sandstone.
							@130.0 ft. nearly all greenish gray claystone.
140	7030						@135.0 ft. ~3% brownish gray (5YR 4/1) claystone.
							@140 ft. nearly all greenish gray claystone.
150	7020				Bentonite		
160	7010						153.0-160.0 ft. SANDY CLAYSTONE AND SANDSTONE; equal amounts, claystone is greenish gray (5G 5/1) and sandstone is very coarse to coarse grained, subrounded, and medium gray (N5).
							160.0-163.0 ft. SANDSTONE; very coarse grained, medium gray (N5).
							163.0-173.0 ft. CLAYSTONE; ~90%, greenish gray (5G 5/1) and small amount of very coarse grained sandstone.
170	7000				10-20 Silica Sand		
180	6990				0.020" Slotted PVC		173.0-193.0 ft. SANDSTONE (Upper Sand); (80%) coarse grained, light gray (N7), 20% claystone, greenish gray.
							@185.0 ft. mostly coarse to very coarse grained sandstone. 10% siltstone, hard, light gray (N7).
							@190.0 ft. very coarse grained sandstone, angular to subangular grains, medium light gray (N6), trace pyrite segregations (1-2mm in diameter).
					Sump/ End Cap Slough		
							Total Depth 193.0 ft.
200	6970						

LM MONITORING WELL SBS01-101-SC SHIP GDT 11/13/2009

Stoller

U.S. DEPARTMENT OF ENERGY
 GRAND JUNCTION, COLORADO

PAGE 2 OF 2 11/13/2009