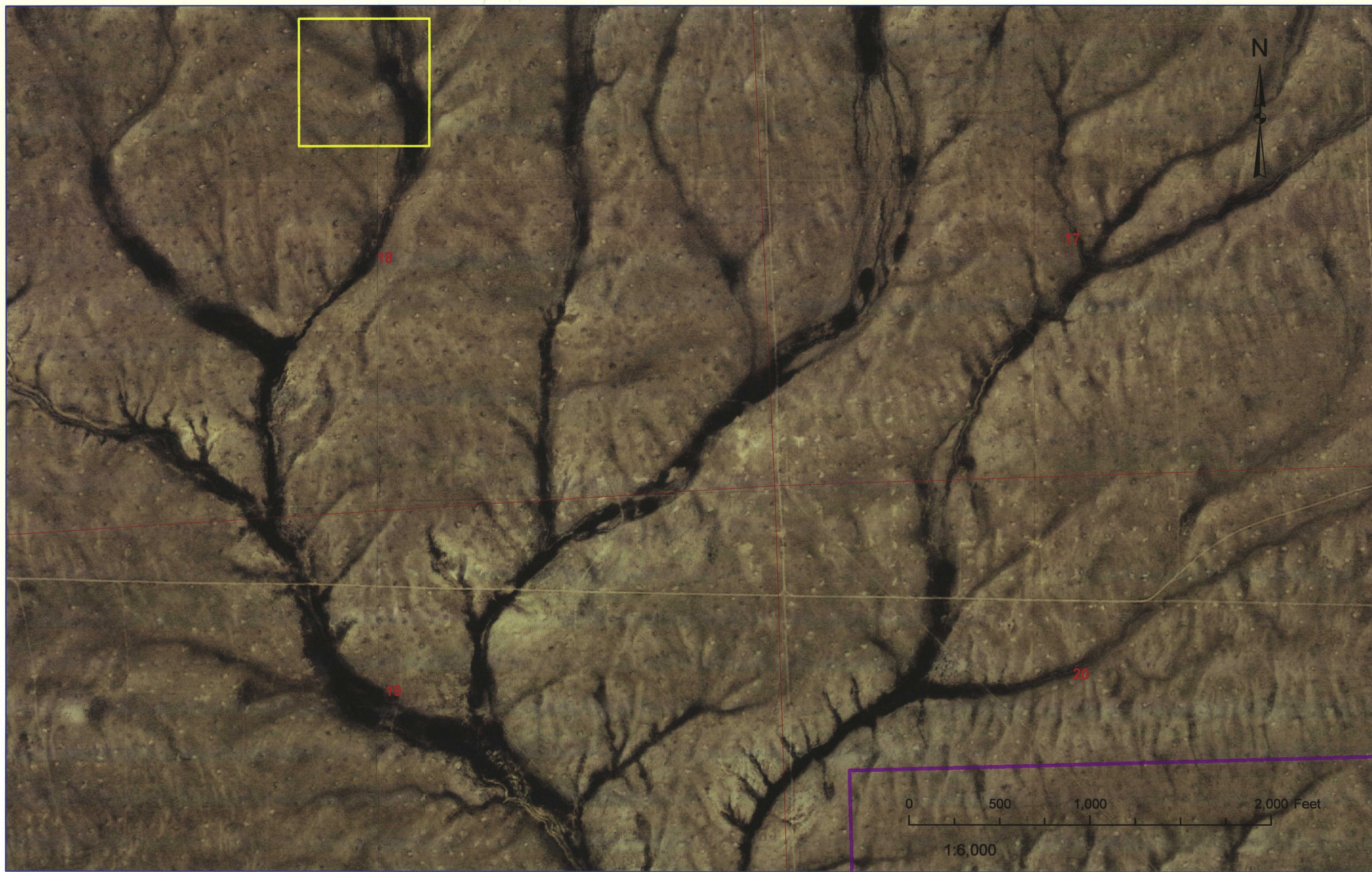


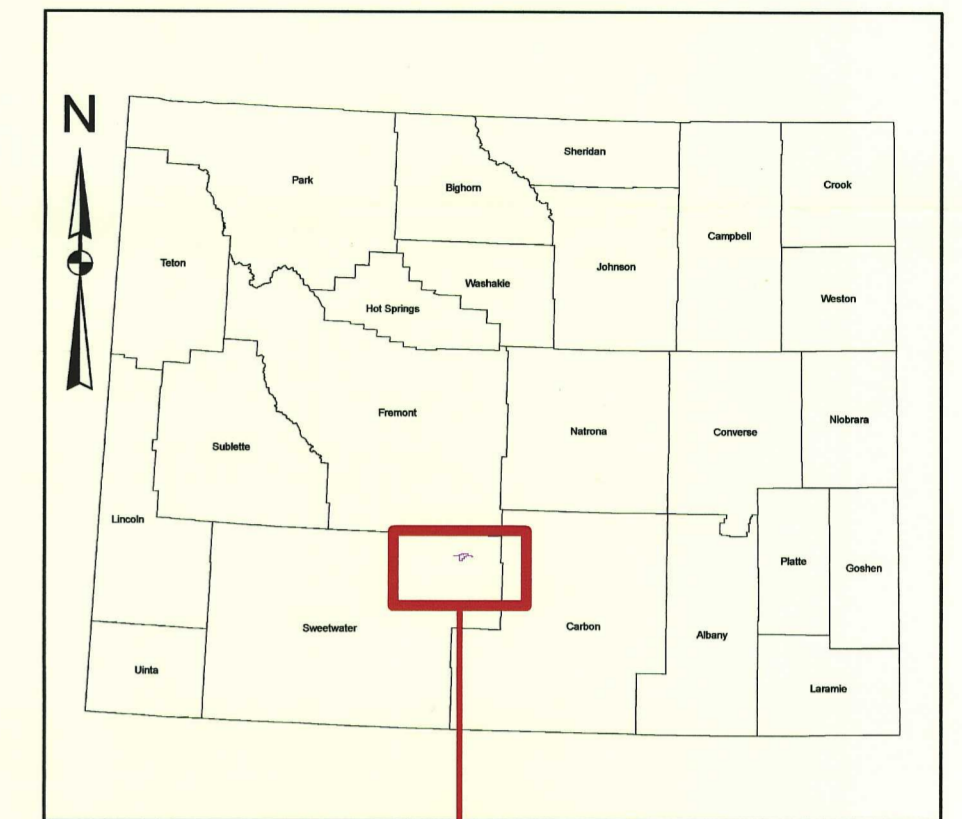
Lost Creek Project - Future Location of Mine Unit 1 - 2006 aerial photo (NAIP Imagery)



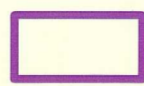
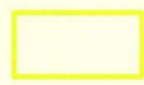

Lost Creek Project - Future Location of Mine Unit 1 - 2009 aerial photo (NAIP Imagery)



State Map - Site Location

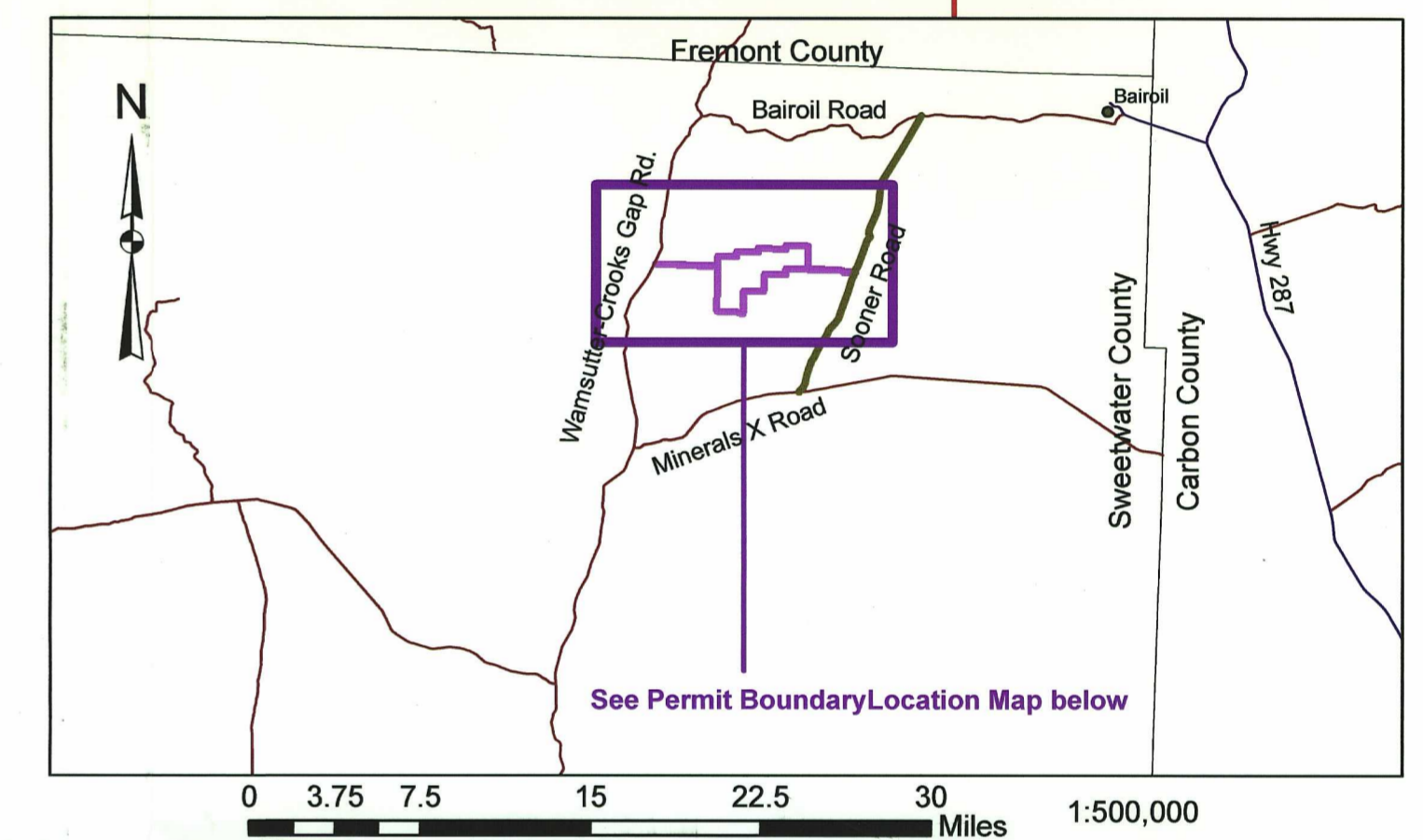


Legend

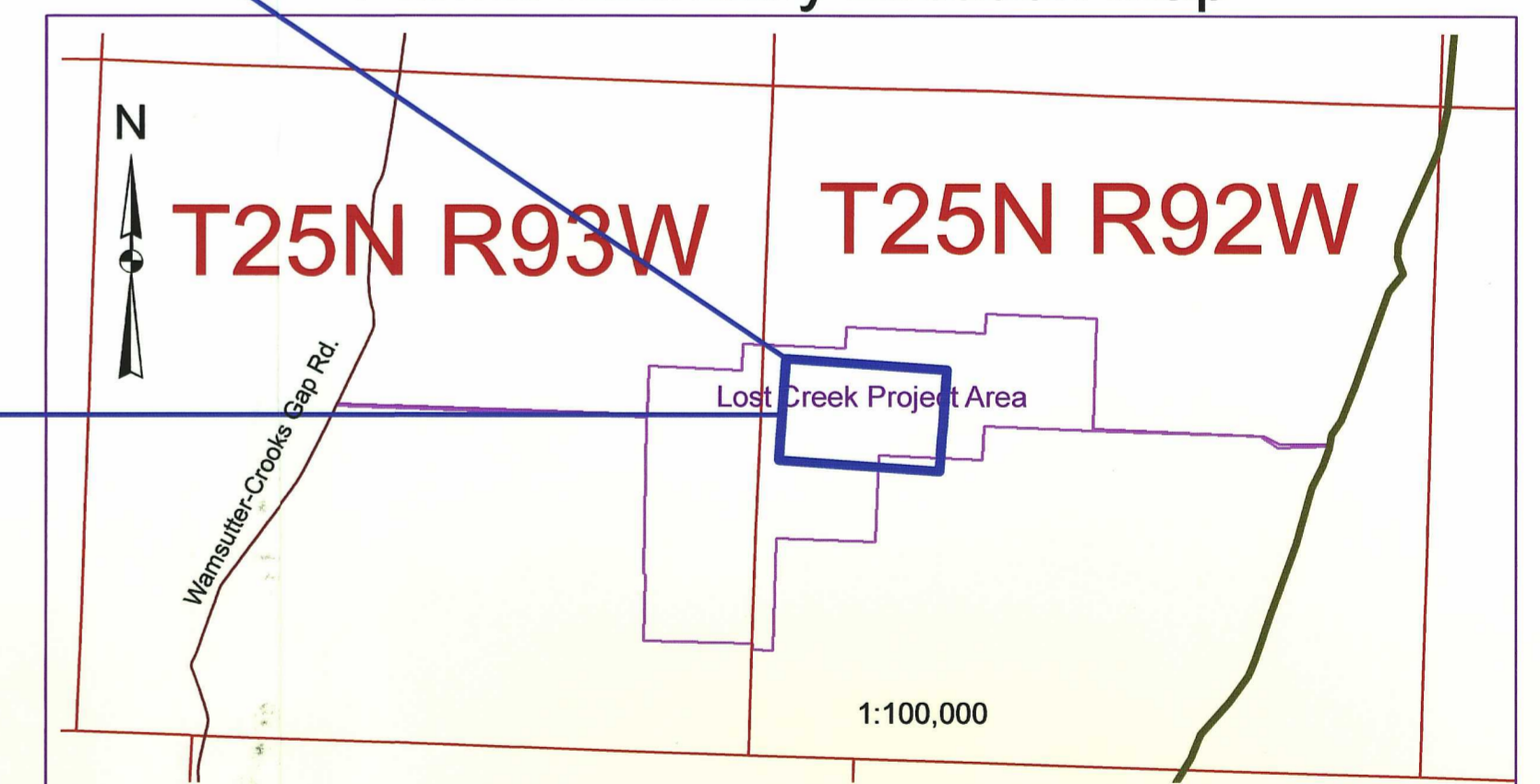
-  Lost Creek- 334DN Boundary
Current ISR Application in
Review for same boundary
(proposed permit area)
LQD Temp Filing Number
(TFN) 4 6/268
-  Proposed location
for ISR Plant Site
-  PLSS Section lines
with section number
in T25N, R92W

WDEQ/LQD estimates that approximately 33 acres have been affected at the 334DN site since exploration and delineation drilling commenced at the site in 2005

Site Location - Road Detail



Permit Boundary Location Map



**Lost Creek ISR, LLC uranium exploration site
(WDEQ/LQD drilling notification 334DN)
A comparison of 2006 with 2009 NAIP Imagery,
northeast Sweetwater County, Red Desert, Wyoming**

Map By: WDEQ/LQD (M.Bautz)
Date: April 23, 2010
Datum: UTM13-NAD83



D-01X