

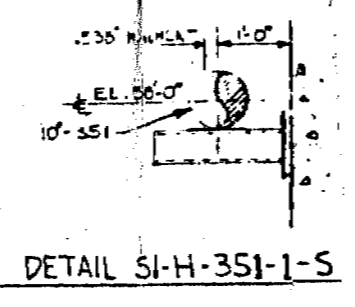
**PIPE RESTRAINT & SUPPORT LEGEND**  
 ALL RESTRAINTS & SUPPORTS WILL BE DESIGNATED AS FOLLOWS:

|                                  |                   |
|----------------------------------|-------------------|
| SYSTEM DESIGNATION               | ABC - D - 123 - Z |
| FROM PIPING FAB SPEC             |                   |
| NO 9321-05-248-73                |                   |
| BASIC FUNCTION                   |                   |
| HANGER OR SUPPORT                | H                 |
| ANCHOR                           | A                 |
| SEISMIC RESTRAINT                | R                 |
| THRUST BLOCK                     | T                 |
| SUPPORT NO.                      |                   |
| DETAILED DESCRIPTION OF FUNCTION |                   |
| SUPPORT UNRESTRICTED             | S                 |
| "U" BOLTED TIGHT                 | U                 |
| "L" LOOSE - CLEAR SIDES & TOP    | L                 |
| GUIDED - CLEAR SIDES & TOP       | G                 |
| HANGER - PLAIN RIGID ROD         | R                 |
| WITH ROCKER WASHER               | W                 |
| SPRING VARIABLE                  | V                 |
| SPRING CONSTANT                  | C                 |
| ANCHOR - FIXED                   | F                 |
| PARTIAL                          | P                 |
| SEISMIC RESTRAINT - RIGID        | R                 |
| GUIDED - CLEAR SIDES & TOP       | G                 |
| HYDRAULIC                        | H                 |

MAXIMUM

- REFERENCE DRAWINGS**
- 9321-F-27353 FLOW DIAG. S.I.S. SH.1
  - 9321-F-27583 FLOW DIAG. REACTOR COOLG. SYST. SH.1
  - 9321-F-13243 CONT. REACT. COOLG. PUMP PLATE FRAMING
  - 9321-F-26143 CONT. BLDG. S.I. SYST. SH.1
  - 9321-F-26173 CONT. BLDG. S.I. SYST. SH.2
  - 9321-F-26573 PWR'S SH.1
  - 9321-F-26583 PWR'S SH.2
  - 9321-F-25613 CONT. BLDG. PIP. RESID. HEAT EXCH. SH.1
  - 9321-F-25623 CONT. BLDG. PIP. RESID. HEAT EXCH. SH.2
  - 9321-F-26033 SLEEVE DWG.
  - 9321-F-55203 CONT. BLDG. RESTRAINT & SUPPORT DESIGN LINE #355

- FOREIGN PRINTS**
- 909060-070 TUBE CO
  - 909060-098 TUBE CO



| PIPE COND. & TEMP.     | ANCHOR MOVEMENT | X    | Y     | Z    |
|------------------------|-----------------|------|-------|------|
| COND. I & II<br>350° F |                 | .764 | 1.007 | .037 |
| COND. III<br>350° F    |                 | .444 | .584  | .025 |
| COND. IV<br>270° F     |                 | .322 | .423  | .016 |

TERA  
APERTURE  
CARD

**POOR ORIGINAL**

**PROB. 401**

SITE ITEM 7 SEISMIC

|   |       |  |  |
|---|-------|--|--|
| 4 | ISSUE |  |  |
| 3 | ISSUE |  |  |
| 2 | ISSUE |  |  |
| 1 | ISSUE |  |  |
| 0 | ISSUE |  |  |

WESTINGHOUSE ELECTRIC CORPORATION  
 CONTAINMENT BUILDING  
 RESTRAINT & SUPPORT DESIGN  
 LINE 351  
 FOR  
 CONSOLIDATED EDISON COMPANY  
 INDIAN POINT GENERATING STATION  
 UNIT NO. 2  
 9321-F-55543-4 A205454

8110310012-01