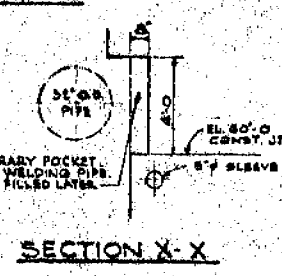
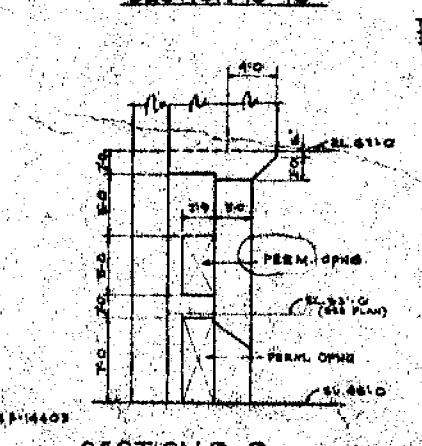
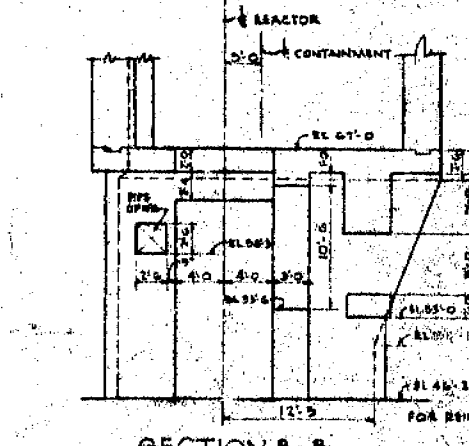
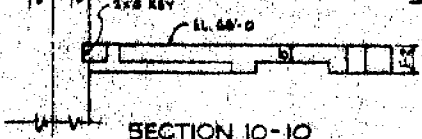
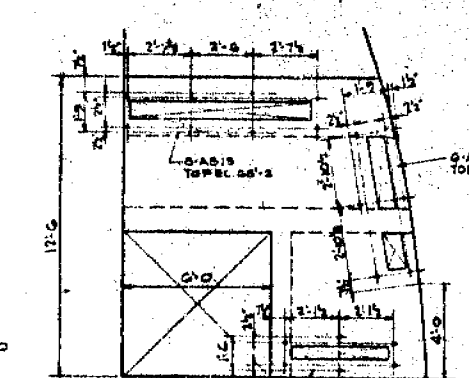
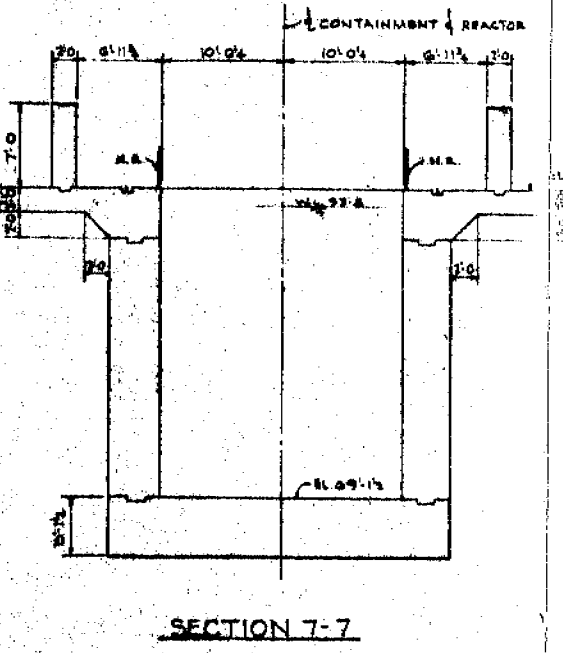
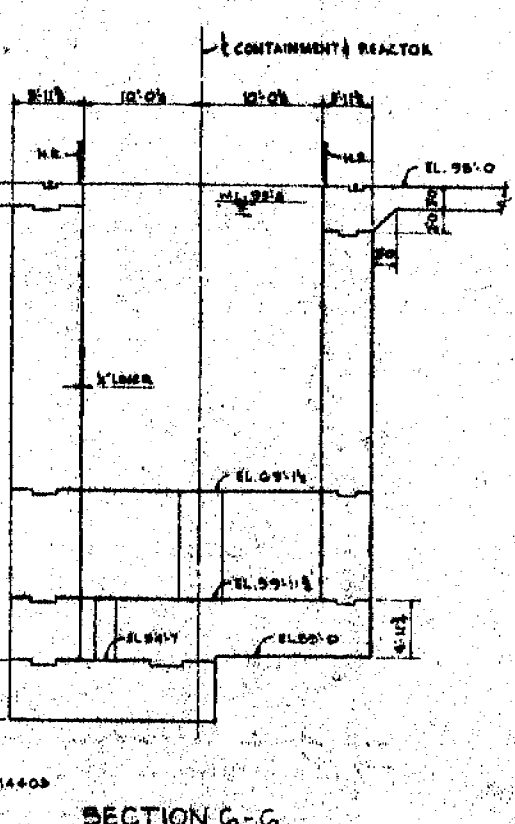
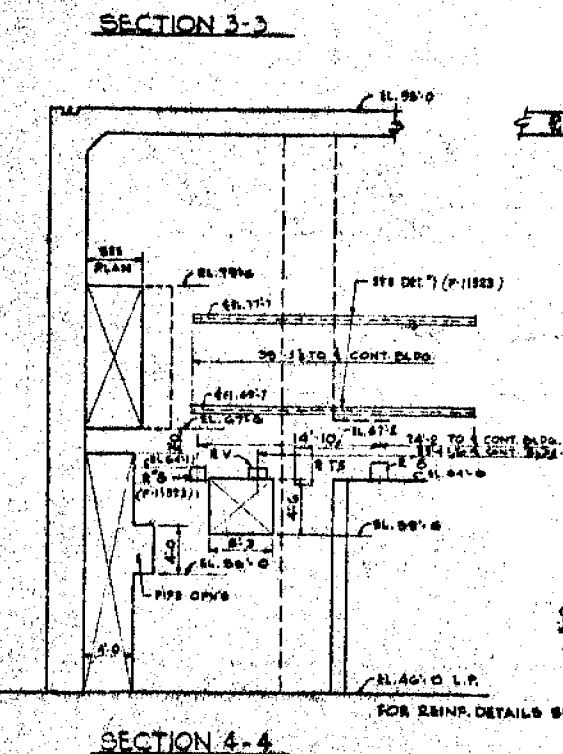
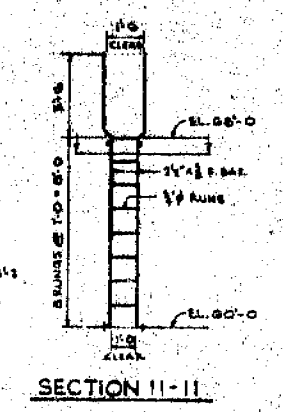
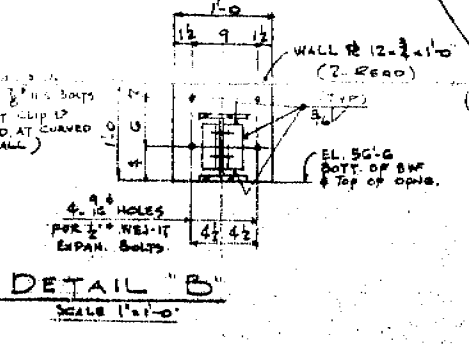
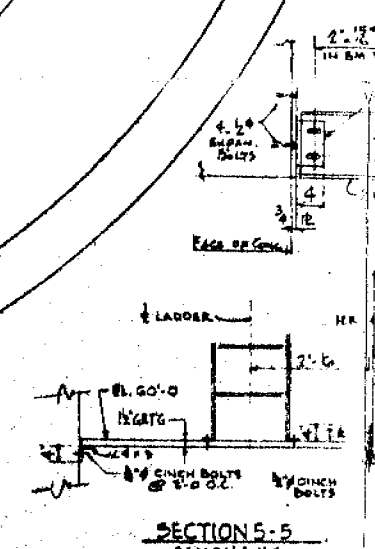
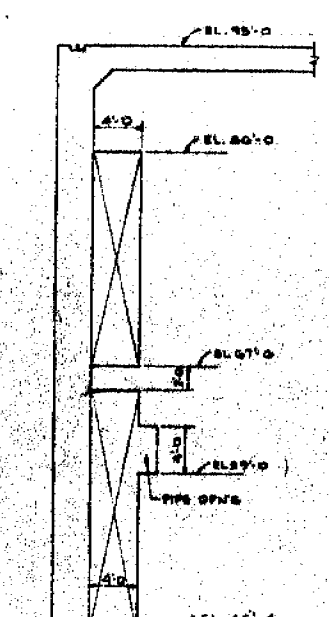
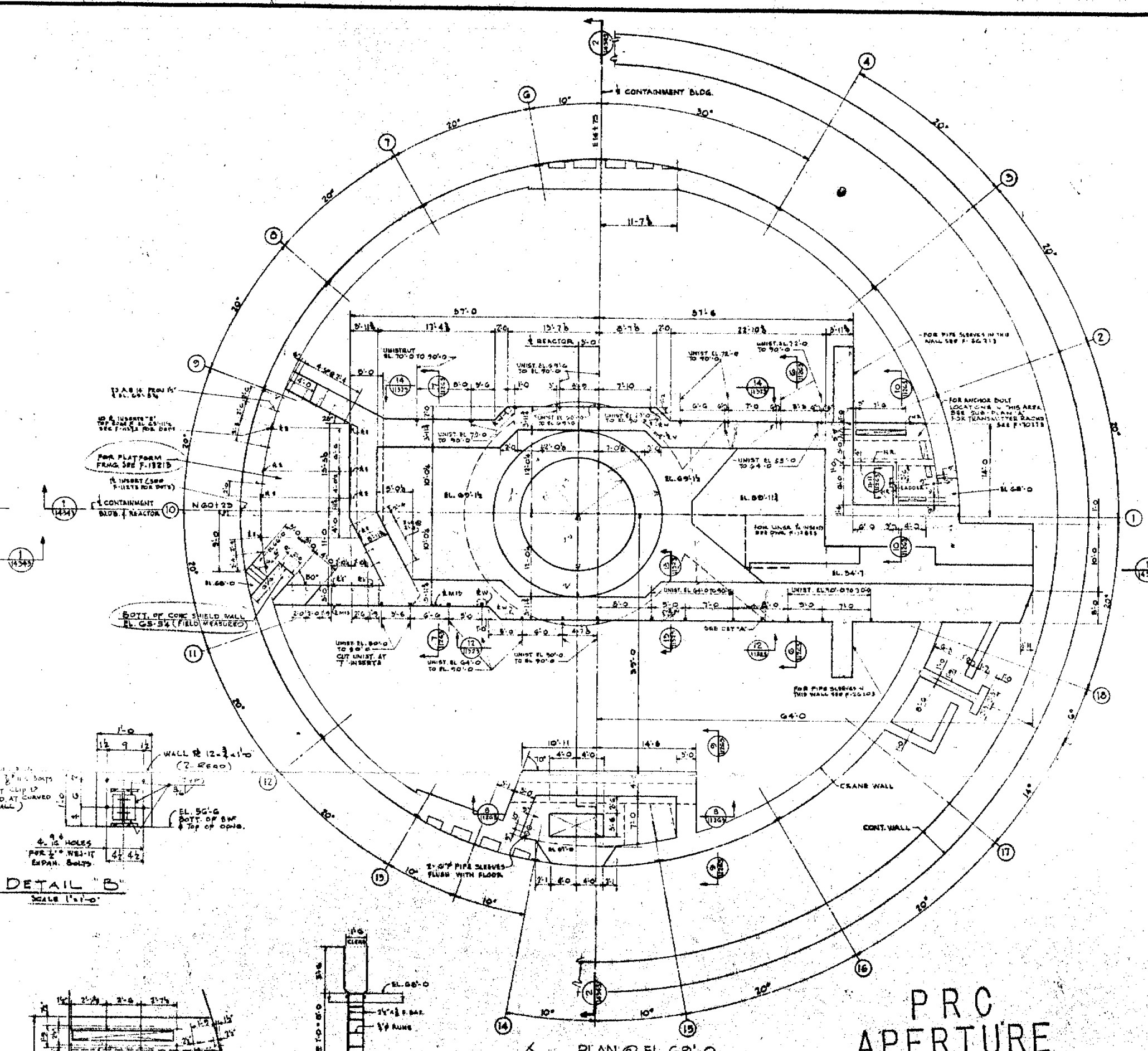
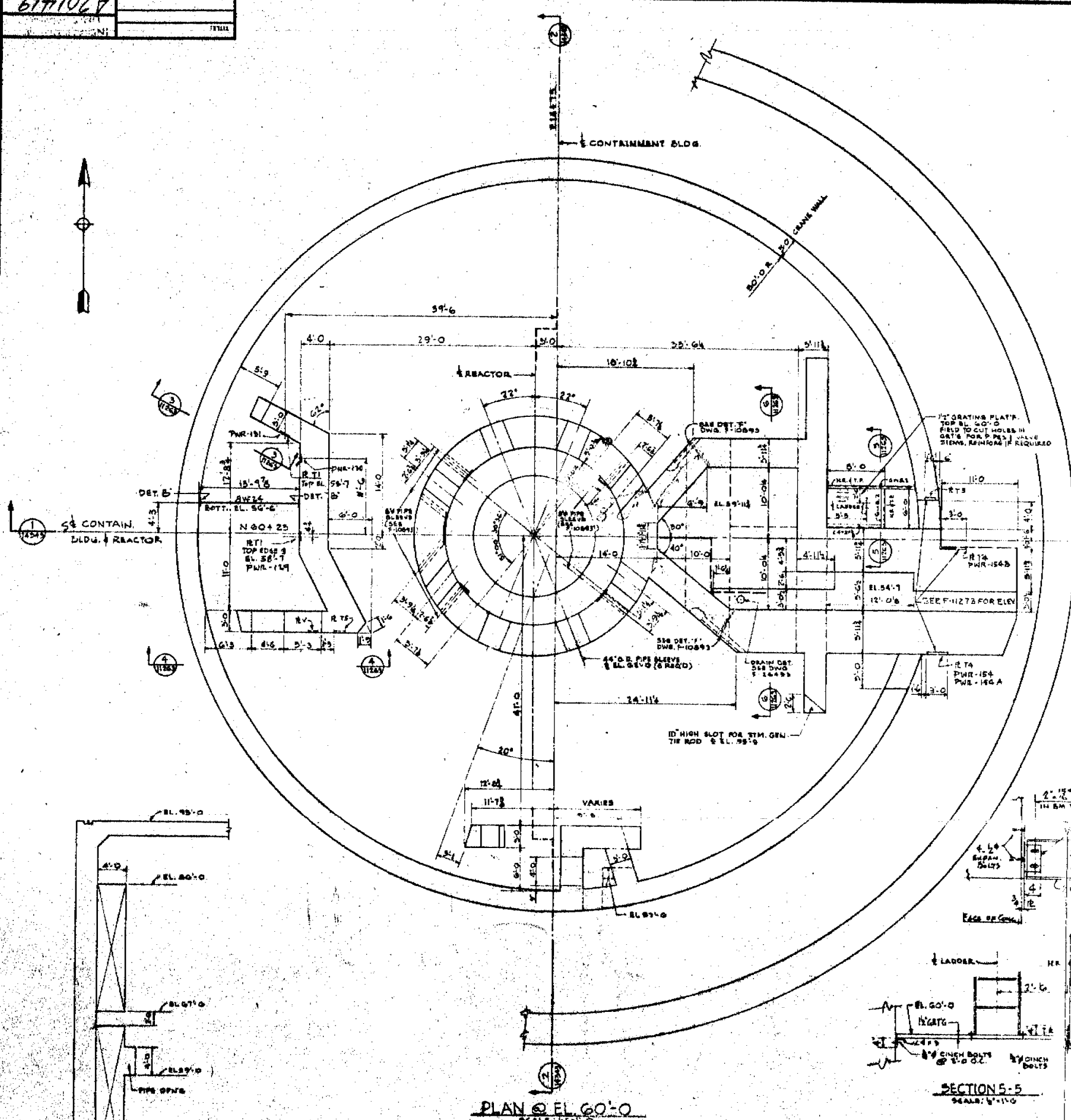


6111027



PRC APERTURE CARD

NOTES
FOR GENERAL NOTES AND ADDITIONAL REFERENCE DRAWINGS SEE P-1440B
FOR DETAILS OF PLATE INSERTS SEE P-1440C
ALL SPANNING LENGTHS TO BE PLANNED BY THE CONTRACTOR AS FOLLOWS: 20' MAX. - 10' TYP. LWS.

REFERENCE DRAWINGS
P-1440B CONTAINMENT INTERIOR CONC. PLAN BELOW
P-1440C CONTAINMENT INTERIOR CONC. SECTIONS & DETAILS
P-1440D REIN. DETAILS SHT. 1
P-1440E SHT. 2
P-1440F SHT. 3
P-1440G CONTAINMENT CRANE WALL REIN. DET. SE. QUADRANT
P-1440H U.S.
P-1440I U.S.

TERA APERTURE CARD

WORK THIS DWG. WITH P-1152B.

NO.	DESCRIPTION	DATE
1	ISSUED FOR CONSTRUCTION	10/24/54
2	REVISION	
3	REVISION	
4	REVISION	
5	REVISION	
6	REVISION	
7	REVISION	
8	REVISION	
9	REVISION	
10	REVISION	

WESTINGHOUSE ELECTRIC CORPORATION
CONTAINMENT INTERIOR CONCRETE
PLANS AT EL. 60'-0" & 69'-0"
FOR CONSOLIDATED EDISON COMPANY
INDIAN POINT GENERATING STATION
UNIT NO. 2
U.S. REG. DWG. NO. 8321-F-11263-4
A 201419

POOR ORIGINAL 8111070585