



Public Outreach Meeting  
Early Site Permit Application for  
Exelon's Victoria County Station  
April 15, 2010

---

Jeffrey Cruz, Chief  
Janelle Jessie, Safety Project Manager  
Paul Michalak, Environmental Project Manager  
Office of New Reactors

# Purposes of Today's Meeting

---

- Describe how an Early Site Permit fits into our licensing process
- Describe our safety review
- Describe our environmental review
- Describe your opportunities to participate with us
- Provide you with NRC contact information

# Who is the NRC?

---

## Nuclear Regulatory Commission

- We protect the public health and safety, assure security, and protect the environment during civilian uses of nuclear materials
- We regulate many types of nuclear activities including the design, construction, and operation of nuclear power plants
- We are an independent federal regulatory agency

# What the NRC does

---

- Determine whether it is safe to build and operate a proposed nuclear plant at a site
- Evaluate the environmental impacts of building and operating a nuclear power plant at the proposed site
- Authorize construction and operation of nuclear power plants
- License the people who operate nuclear power plants

# Why are we Here Today?

---

- On March 25, 2010, Exelon Nuclear Texas Holdings filed an application with the NRC for an Early Site Permit
- We are in the beginning of the licensing process and have yet to determine if the application is complete
- Exelon also requested that its pending Combined License application be withdrawn if we determine that the ESP review can begin

# What is an Early Site Permit?

---

- A document that approves a proposed site as suitable for construction and operation of a nuclear power plant
- An ESP can allow for site preparation activities, such as building a foundation, but it does not allow for construction of safety significant portions of the plant and it does not allow for operation

# How does an Early Site Permit Mesh with Other NRC Approvals?

- An applicant can apply for a Limited Work Authorization -- approval to begin limited construction before a Combined License is issued
- Limited Work Authorizations can be issued with an ESP or before a Combined License
- An ESP can also be referenced in a future Combined License application

# How do Early Site Permits fit in the NRC Licensing Process?

---

- An ESP resolves site suitability issues early
- An ESP can support an application for a Combined License to build and operate a nuclear power plant
- An ESP can be matched to a reactor design, or cover a range of possible design parameters



# Why is there Interest in Early Site Permits?

---

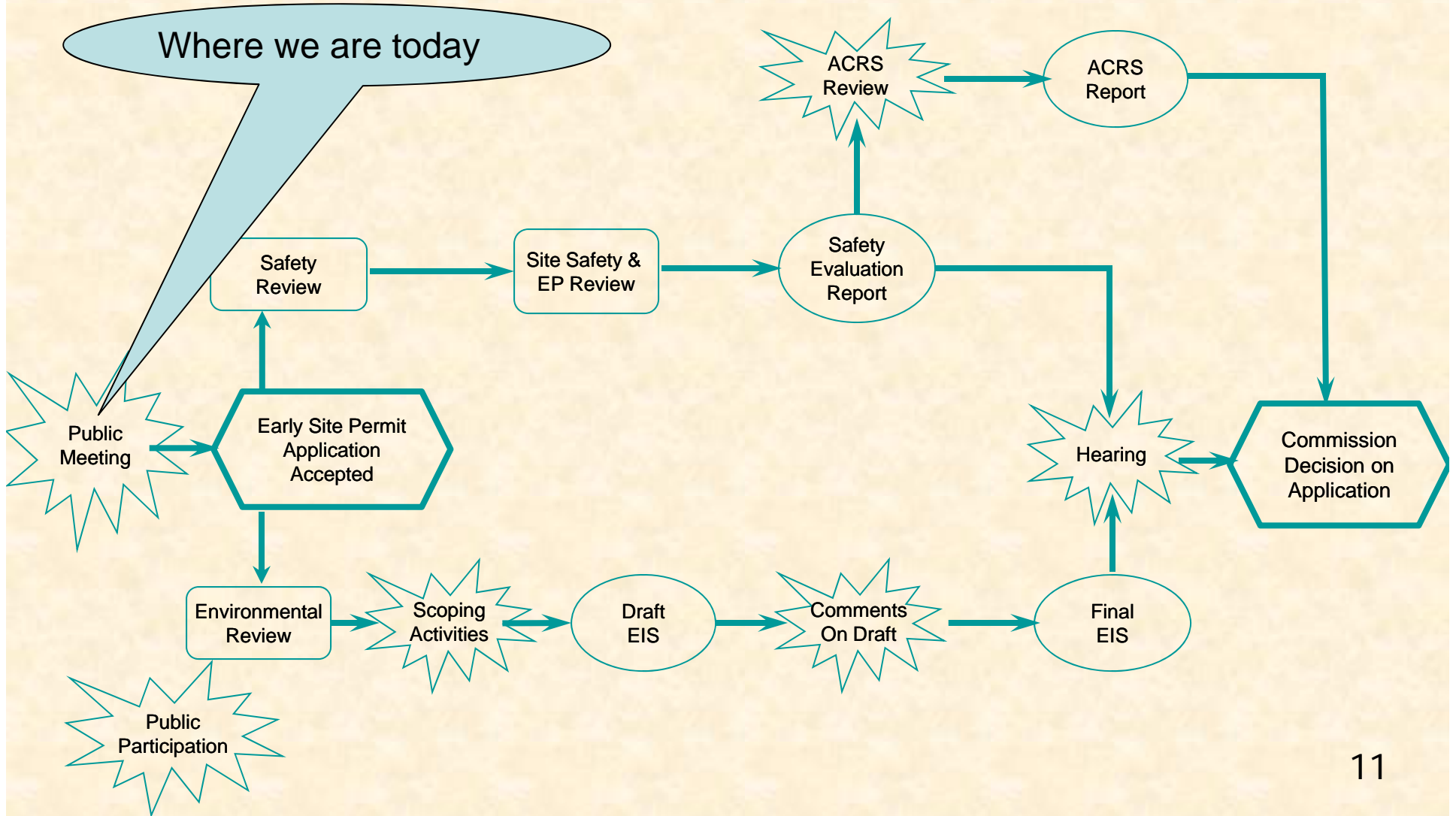
- An ESP is valid for 10 to 20 years so that applicants can decide when to seek approval to build a plant
- In resolving site-specific issues early, an ESP can reduce an applicant's regulatory and financial uncertainty when planning for the future

# Required Reviews: Victoria County ESP Application

---

- The safety review creates a safety evaluation report (SER) addressing
  - Site Safety
  - Emergency Planning
  - Security
- The environmental review creates an environmental impact statement (EIS)

# Early Site Permit Review Process



# Participants in NRC Review Process



## NRC

- Commissioners
- NRC Staff members
- Atomic Safety Licensing Board
- Advisory Committee on Reactor Safeguards



## Stakeholders

- Residents of the community
- Public interest groups
- Other Federal agencies
- State entities
- Local officials
- Tribal officials and others



## Permit Applicant

- Exelon

# Safety Review under the Atomic Energy Act

---

- Atomic Energy Act authorizes the NRC to protect public health and safety, and to provide for the common defense and security
- A Safety Evaluation Report (SER) will be issued after we conduct our review according to the regulations in Title 10 of the Code of Federal Regulations (10 CFR) Part 52

# Victoria County ESP Safety Review

---

- Areas of review include:
  - Seismology
  - Geology
  - Hydrology
  - Meteorology
  - Geography
  - Demography (population distribution)
  - Site hazards evaluation
  - Emergency Preparedness ( with FEMA)

# National Environmental Policy Act (NEPA)

---

- NEPA requires the NRC to systematically consider environmental impacts of its actions, such as licensing
- The NRC must issue an Environmental Impact Statement (EIS) detailing its ESP Environmental review

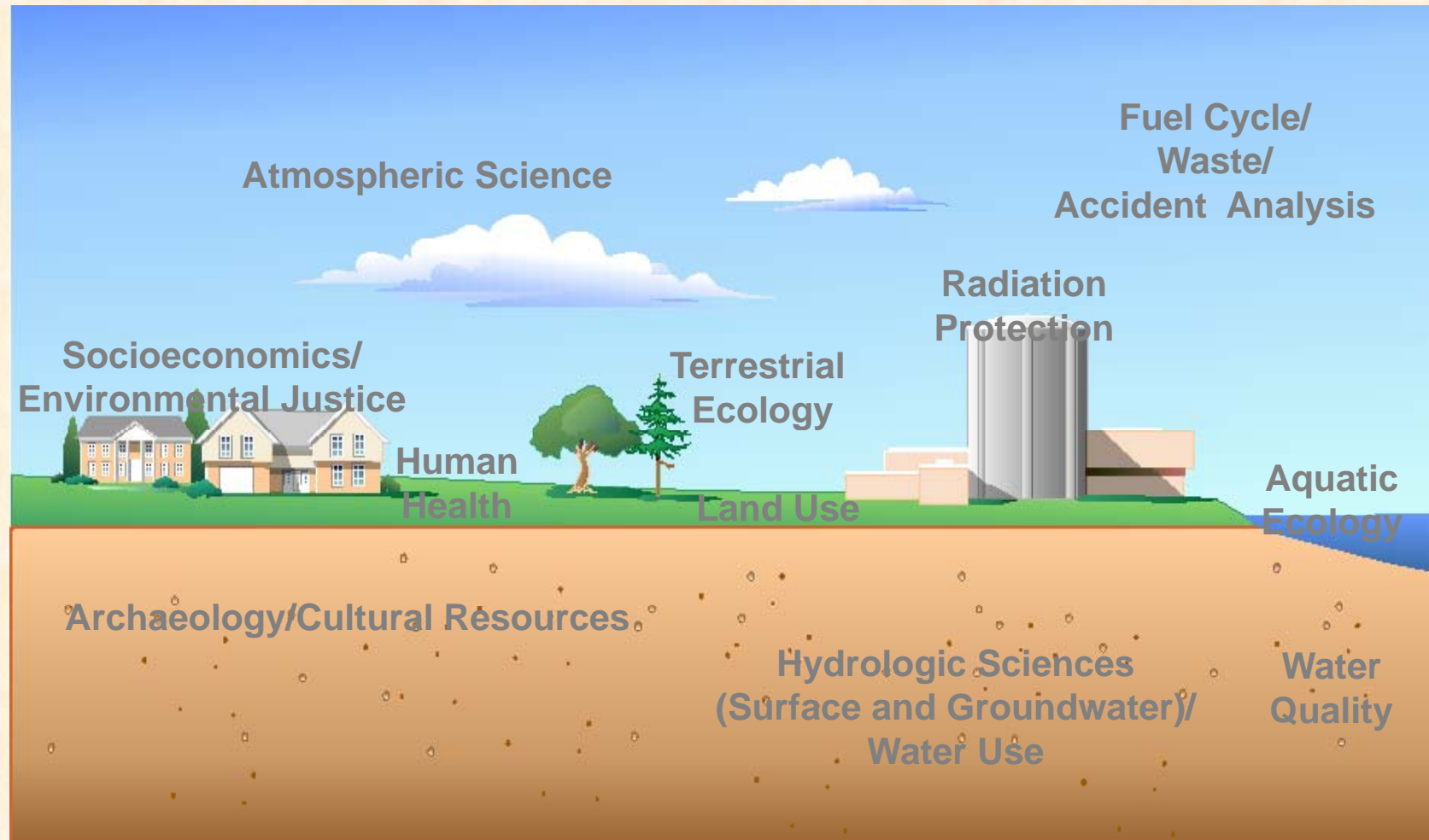
# Victoria County ESP Environmental Review

---

- Evaluate environmental impacts of construction and operation of a proposed nuclear plant
- NRC systematic approach
  - Regulations (10 CFR Part 51)
  - Guidance: Environmental Standard Review Plan (NUREG-1555)
  - Quality Control Programs

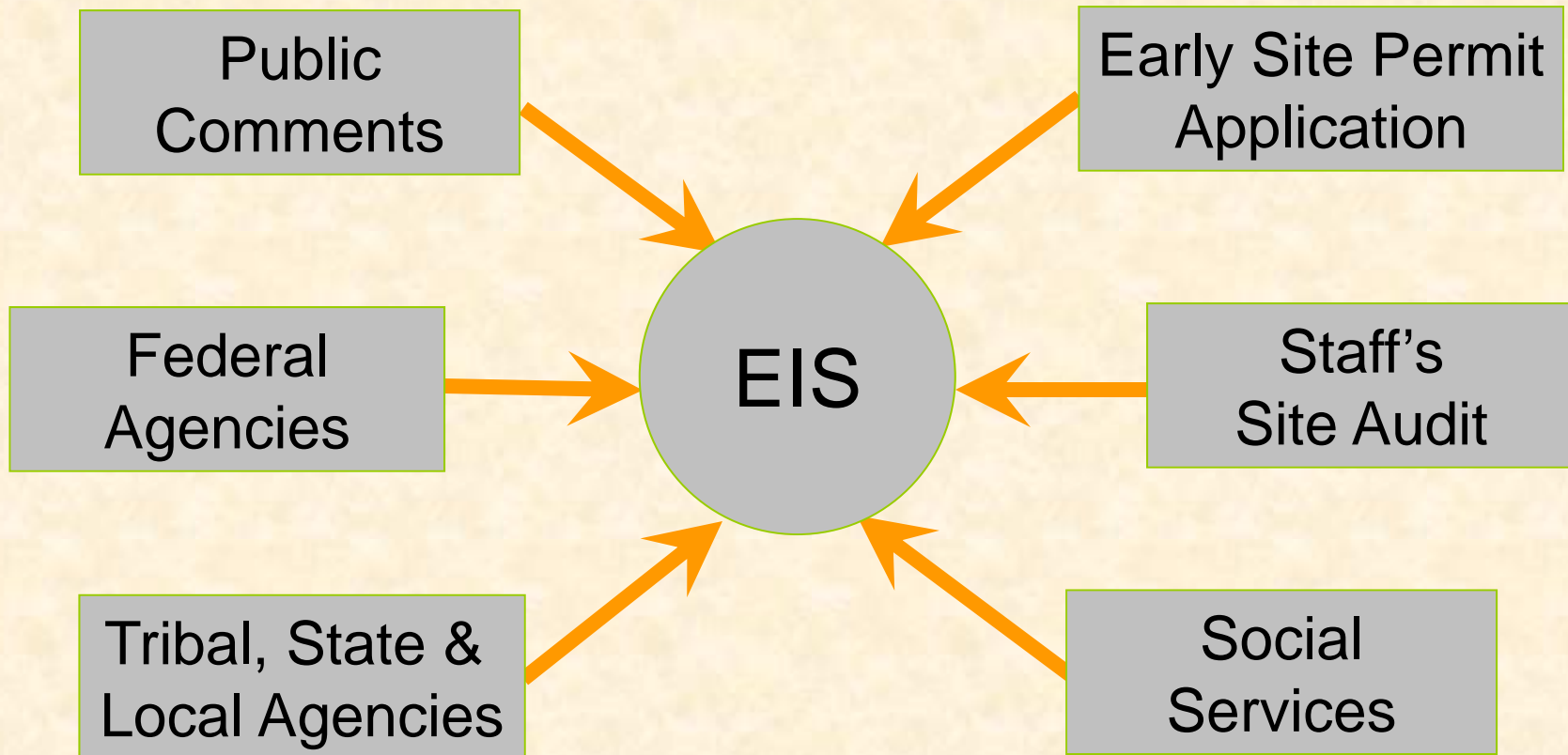


# Environmental Review Team Expertise



# Information Gathering

---



# Public Involvement - Environmental Review

---

- Public involvement
  - Public meeting on scope of environmental issues
  - Public comment on draft EIS
- Document and publish environmental findings
- Maintain an open and transparent review process

# Public Involvement -- Hearing

---

- The public's opportunity to participate in a hearing
- A Hearing Notice in the *Federal Register* will describe how members of the public can petition to intervene in the hearing

# Hearing

---

- Members of the public will have 60 days to file intervention petitions electronically
- Hearing notices include instructions for e-filing (also at [www.nrc.gov/site-help/e-submittals.html](http://www.nrc.gov/site-help/e-submittals.html) )
  - E-Filing is required by the Commission
  - Petitioners need a digital certificate or waiver from the requirement (allow 10 business days)
- Hearing covers both Safety and Environmental Issues

# Additional Information

---

- Agency Points of Contacts
  - Janelle Jessie, Safety Project Manager  
(800) 368-5642 ext. 6775
  - Paul Michalak, Environmental Project Manager  
(800) 368-5642, ext. 7612
- Documents can be viewed at Victoria Public Library
- NRC website:  
<http://www.nrc.gov/reactors/new-reactors/esp/victoria.html>