

## Bjornsen, Alan

---

**From:** Bjornsen, Alan - *FSME*  
**Sent:** Friday, June 19, 2009 12:07 PM  
**To:** 'Ed\_Heffern@blm.gov'; Pete\_Sokolosky@blm.gov  
**Cc:** Bubar, Patrice; Kock, Andrea  
**Subject:** Mtg Info - 24-25Jun  
**Attachments:** MOUpres.ppt; Status of Current Applications (2).xls; BLM WY DEQ mtg slides rev3.ppt

Ed/Pete,

Attached are our presentation materials and information to be used in our working session on Wednesday afternoon. Please note that the table showing the status of current UR applications is draft, only, as it is currently incomplete. The dates will be filled in by Tuesday.

*Alan B. Bjornsen*

Environmental Project Manager  
FSME/DWMEP/EPPAD/ERB  
U.S. Nuclear Regulatory Commission  
11545 Rockville Pike  
Rockville, MD 20852  
(301) 415-1195  
[alan.bjornsen@nrc.gov](mailto:alan.bjornsen@nrc.gov)

# NRC Coordination with BLM on Uranium Recovery Applications

Patrice Bubar, Deputy Director  
Environmental Review Branch

U.S.NRC

September 25, 2009



## NRC/BLM MOU



- **BACKGROUND**

Concurrent NEPA reviews conducted by each agency on same project discovered during visits to BLM field offices in September 2008 to discuss the GEIS

- **NEED**

Numerous proposed new uranium recovery facilities located on BLM-administered land

## Purposes of the MOU

---

- Provide an efficient means of fulfilling NEPA requirements
- Encourage routine communication
- Advance notice of agency actions
- Provide framework for exchange of data
- Establish roles and responsibilities



3

## Status of MOU

---

- Draft MOU sent to BLM on January 26 2009
- Revised draft MOU submitted to BLM by NRC on May 20, 2009
- Meeting held June 10 to discuss feasibility of issuing one NEPA document
- Telecon scheduled June 29 to discuss final comments
- Letters to BLM field offices



4

## Progress

---

- Letters to BLM field offices
- Share future agency actions
- Routine communication with field offices
- MOU in final stages
  - Telecon June 30 2009

5

## NRC/BLM MOU CONTENTS

---

- PURPOSE
- LEGAL AUTHORITIES
- ROLES AND RESPONSIBILITIES
- COORDINATION
  - Advance notice of uranium recovery license applications/Plans of Operation
  - Exchange data and information
  - Steering Committee
  - Lead/Cooperating Agency Status
  - NEPA Implementation and Review Process
  - Schedules and Interagency Communication

6

## Challenges

---

- Different timelines
- Different purpose and need/alternatives
- Agency resources
- Resource areas reviewed
- Different agency roles
- Different procedures for completing documents

7

## Expected Outcome

---

- Increase communication
- Advance notice of expected actions
- Sharing of early drafts of NEPA documents
- Efficiencies in NEPA process
- Continue to explore possibility of only one NEPA document

8

## Next Steps

---

- Finalize BLM/NRC MOU
- Protocol established to delineate NRC roles and responsibilities regarding interacting with agencies
- Continue to be proactive in engaging other federal agencies

Status of Current Wyoming/Nebraska Applications  
Draft as of June 19, 2009

<b>Supplemental Environmental Impact Statements</b>									
				<b>Acceptance</b>				<b>Draft SER Complete -</b>	
<b>Site Name</b>	<b>State</b>	<b>Type of Application</b>	<b>Application Received</b>	<b>Review Complete</b>	<b>Technical RAIs Sent</b>	<b>Environmental RAIs Sent</b>	<b>Includes Delays</b>	<b>Draft SEIS</b>	<b>SEIS Complete</b>
Hank & Nichols	Wyoming	ISL New	12/1/2007	4/18/2008	9/11/2008	3/12/2009	9/12/2009	10/9/2009	4/5/2010
Jab Antelope	Wyoming	ISL New	9/1/2008	3/9/2008					
Lost Creek	Wyoming	ISL New	4/17/2008	6/10/2008	11/6/2008	3/16/2009	10/3/2009	10/9/2009	4/5/2010
Moore Ranch	Wyoming	ISL New	10/1/2007	12/20/2007	5/14/2008	3/23/2009	10/1/2009	10/9/2009	4/5/2010
<b>Environmental Assessments</b>									
				<b>Acceptance</b>				<b>Draft SER Complete -</b>	
<b>Site Name</b>	<b>State</b>	<b>Type of Application</b>	<b>Application Received</b>	<b>Review Complete</b>	<b>Technical RAIs Sent</b>	<b>Environmental RAIs Sent</b>	<b>Includes Delays</b>	<b>Draft EA</b>	<b>EA Complete</b>
Crow Butte (North Trend)	Nebraska	Expansion	6/1/2007	8/30/2007	2/27/2009		Sep-09		
Crow Butte	Nebraska	Renewal	10/1/2006	3/28/2008	1/16/2009	4/13/2009		10/9/2009	2/26/2010
Cogema	Wyoming	Restart	4/1/2007						
Cogema	Wyoming	Renewal	7/8/2009	12/29/2008	3/29/2009				



**U.S. NRC**  
UNITED STATES NUCLEAR REGULATORY COMMISSION  
*Protecting People and the Environment*

Meeting with BLM & WY DEQ  
Regarding Uranium Recovery Applications  
and Agency Environmental Review Processes

June 24, 2009

## Purposes of Meeting

- Increase level of understanding of each agency with respect to jurisdiction/authority and environmental review processes
- Identify overlaps in each agency's reviews
- Establish better communication between agencies with respect to review schedules and issues identified during review



## Agenda

- NRC authority & review process
- BLM authority & review process
- Status of NRC/BLM MOU
- WY DEQ authority & review process
- Status of uranium recovery (UR) applications, draft MOU with BLM
- Open discussion

3

## NRC Roles & Responsibilities

- NRC is an independent agency
- Mission: protect public health and safety and environment, promote common defense and security
- Has responsibility along with Agreement States for licensing commercial use of nuclear materials
- Openness and soliciting comments on our actions is one of our core values

4

# NRC's Licensing Review Process

- Licensing application submitted for review
- Review conducted in two steps:
  - Acceptance review
  - Detailed review
- Detailed review composed of two parts:
  - Site-specific safety review
  - Site-specific environmental review

## Uranium Recovery Project Managers Point of Contact List

The Uranium Recovery Licensing Branch is responsible for the safety review, while the Environmental Review Branch manages the environmental review.

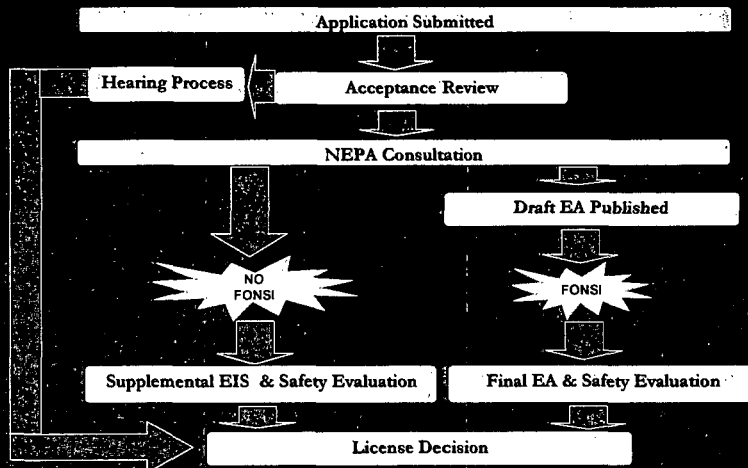
Larry Campbell, Director (301) 415-7777 Larry.Campbell@nrc.gov			
John McCreath, Deputy Director (301) 415-7777 John.McCreath@nrc.gov			Emily Baker, Deputy Director (301) 415-7777 Emily.Baker@nrc.gov
Van Till, Branch Chief (301) 415-7777 VanTill@nrc.gov			Andrew Kunk, Branch Chief (301) 415-7777 Andrew.Kunk@nrc.gov
Ron Lanning, Director (301) 415-7777 Ron.Lanning@nrc.gov	Fred Cohen, Team Leader (301) 415-7777 Fred.Cohen@nrc.gov	Dennis Hines, DRI Lead (301) 415-7777 Dennis.Hines@nrc.gov	Chris Blaine Hunt, Team (301) 415-7777 Chris.Hunt@nrc.gov
Ronald Burrows, Lead (301) 415-7777 Ronald.Burrows@nrc.gov	Myron (Mike) Farnell, Lead (301) 415-7777 Myron.Farnell@nrc.gov	Alan Hines, DRI Lead (301) 415-7777 Alan.Hines@nrc.gov	Bruce Taylor, DRI Lead (301) 415-7777 Bruce.Taylor@nrc.gov
James (Jim) Webb, Lead (301) 415-7777 James.Webb@nrc.gov	Robert Bland, DRI Lead (301) 415-7777 Robert.Bland@nrc.gov	Lawrence (301) 415-7777 Lawrence@nrc.gov	
DWMEP: Division of Waste Management and Environmental Protection DURLE: Decommissioning and Uranium Recovery Licensing Directorate EPPAD: Environmental Protection and Performance Assessment Directorate URLB: Uranium Recovery Licensing Branch ERB: Environmental Review Branch			

### Uranium Recovery Project Managers Point of Contact List

NAME	E-MAIL	PHONE	POSITION	SITE
Larry Camper	Larry.Camper@nrc.gov	(301) 415-7437	Director, DWMEP	
Keith McConnell	Keith.McConnell@nrc.gov	(301) 415-7295	Deputy Director, DURLD	
*The Uranium Recovery Licensing Branch is responsible for the safety review				
Steve Cohen	Stephen.Cohen@nrc.gov	(301) 415-7182	Team Leader, New Facility Licensing	
Ron Linton	Ron.Linton@nrc.gov	(301) 415-7777	Lead	Hank/Nichols Ranch Cogema
Myron (Miko) Fliegel	Myron.Fliegel@nrc.gov	(301) 415-9329	Lead	Moore Ranch
Ronald Burrows	Ronald.Burrows@nrc.gov	(301) 415-6443	Lead	Crow Butte North Trend Expansion Crow Butte License Renewal Last Creek
James Webb	James.Webb@nrc.gov	(301) 415-6252	Lead	Jab & Antelope
Patrice Bubar	Patrice.Bubar@nrc.gov	(301) 415-8125	Deputy Director, EPPAD	
*The Environmental Review Branch is responsible for the environmental review				
Johari Moore	Johari.Moore@nrc.gov	(301) 415-7694	ERB Lead	Jab & Antelope Cogema
Mathews George	Mathews.George@nrc.gov	(301) 415-7065	ERB Lead	Crow Butte North Trend Expansion
Alan Bjarnsen	Alan.Bjarnsen@nrc.gov	(301) 415-1195	ERB Lead	Crow Butte License Renewal Last Creek
Irene Yu	Irene.Yu@nrc.gov	(301) 415-1951	ERB Lead	Hank/Nichols Ranch
Behram Shroff	Behram.Shroff@nrc.gov	(301) 415-0606	ERB Lead	Moore Ranch
James Park	James.Park@nrc.gov	(301) 415-6935	ERB Lead	Ludeman
Haimanot Yitma	Haimanot.Yitma@nrc.gov	(301) 415-8020	ERB Lead	Dewey Burdock

DWMEP: Division of Waste Management and Environmental Protection  
 DURLD: Decommissioning and Uranium Recovery Licensing Directorate  
 EPPAD: Environmental Protection and Performance Assessment Directorate  
 URLB: Uranium Recovery Licensing Branch  
 ERB: Environmental Review Branch

### Regulatory Process for In-Situ Uranium Recovery



## NRC and NEPA

- NRC's regulations to implement NEPA requirements are in 10 CFR Part 51
- Application for new license, renewal, or amendment initiates NEPA review process
- NRC is not proponent of the action
  - Proposed action - what the applicant/licensee is seeking to do
  - Federal action – NRC approval/denial of application for new license, renewal, or amendment

9

## Types of UR NEPA Documents

- New ISL applications – Supplemental Environmental Impact Statements (SEISs) tiered from the ISL Generic Environmental Impact Statement (GEIS)
- License renewals, expansions and amendments – Environmental Assessments (EAs)/Finding of No Significant Impact (FONSI)
- Conventional milling/heap leach applications – stand-alone EISs

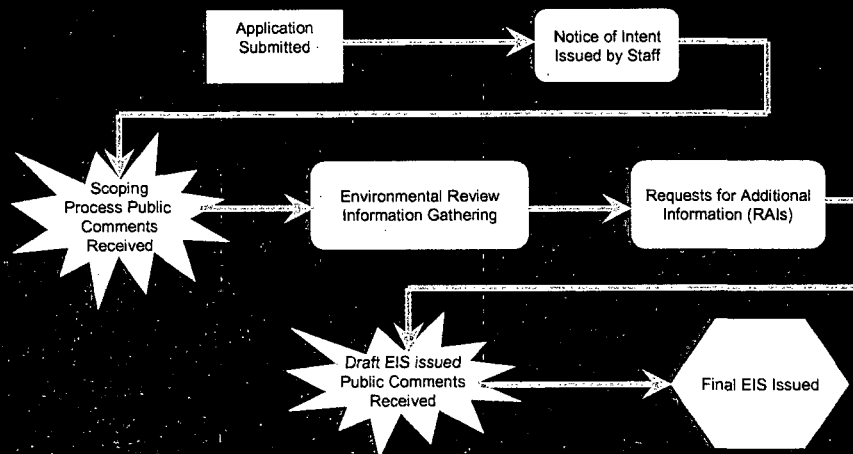
10

## Sources of Information for Site-Specific Environmental Review

- Applicant's environmental report
- Other relevant information/data
- ISL GEIS
  - Evaluate site-specific information to determine if applicant's proposed action and site characteristics are within the bounds of the GEIS
  - Determine which sections to be incorporated by reference into site-specific review and which sections need further analysis

11

## Environmental Review Process – Conventional Milling



12

## Example Schedule

EA	SEIS	EIS	Milestone
-90	-90	-90	Begin acceptance review
0	0	0	End acceptance review, begin environmental review
N/A	45	75	Issue NOI for SEIS/EIS and scoping
60	75	90	Site visit
-	-	90	Public scoping meeting(s)
150	165	165	Issue environmental RAIs
270*	300	360	Issue draft NEPA document for public comment
300*	360	435	End public comment period
365	435	555	Issue final NEPA document
N/A	465	585	Agency final decision

\* If requested

13

## Current Projects Under Review

- Moore Ranch, Nichols Ranch, Lost Creek (new ISLs)
  - Environmental RAIs issued in March 2009
  - Draft SEIS expected to be issued Winter 2009
  - Final SEIS expected to be issued Spring 2010
- Jab and Antelope (new ISL)

14

## Status of WY UR Applications

Company	Site	Type	Estimated App. Date
Lost Creek ISR, LLC	Lost Creek	ISL - New	Rec 05/08, Acc 06/08
Uranerz Energy Corp.	Nichols Ranch	ISL - New	Rec 11/07, Acc 04/08
Uranium One	Moore Ranch	ISL - New	Rec 10/07, Acc 12/07
Uranium One	Jab and Antelope	ISL - New	Rec 9/08, Acc 05/09
Uranium One	Ludeman	ISL - New	07/09
Lost Creek ISR, LLC	Lost Creek	ISL - Expansion	11/09
UR-Energy Corp.	Lost Soldier	ISL - Expansion	11/09
Uranium One	Allemant-Ross	ISL - Expansion	12/09
Cameco	Smith Ranch/Highland	ISL - Expansion	TBD
Strathmore Minerals	Reno Creek	ISL - New	03/11
Wildhorse Energy	West Alkali Creek	ISL - New	12/10
Wildhorse Energy	Sweetwater	ISL and Conv. - New	05/11
Cameco	Ruby Ranch	ISL - Expansion	10/11
Strathmore Minerals	Gas Hills	Conv. - New	10/11

15

## Status of Existing UR Operations

- ▣ Operating
  - ▣ Smith Ranch (ISR)
  - ▣ Highlands (ISR)
  - ▣ Christiansen Ranch (ISR)
  - ▣ Crow Butte, NE (ISR)
- ▣ Decommissioning
  - ▣ Lucky Mc (Conventional)
  - ▣ ANC (Conventional)
  - ▣ Gas Hills (Conventional)
  - ▣ Split Rock (Conventional)
  - ▣ Shirley Basin (Conventional)
  - ▣ Bear Creek (Conventional)
- ▣ Standby
  - ▣ Sweetwater (Conventional)

16

## BLM Authority

- Jurisdiction
- Structure
- Review process

17

## WY DEQ Authority

- Jurisdiction
- Structure
- Review Process

18



## Open Discussion

- Overlaps in each agency's review
- Touch points in schedule for interagency communication
- Timing of document sharing and comment review
- Agency points of contact