

Franke, Mark

From: Franke, Mark *MS*
Sent: Tuesday, October 13, 2009 3:45 PM
To: Sykes, Marvin
Subject: FW: 2009 Oct 13 - Containment - NRC SIT Briefing.pptx
Attachments: 2009 Oct 13 - Containment - NRC SIT Briefing.pptx

Importance: High

fyi

From: Lake, Louis *MS*
Sent: Tuesday, October 13, 2009 1:26 PM
To: Franke, Mark
Subject: FW: 2009 Oct 13 - Containment - NRC SIT Briefing.pptx
Importance: High

From: Herrin, Dennis W. [mailto:Dennis.Herrin@pgnmail.com]
Sent: Tuesday, October 13, 2009 1:15 PM
To: Saba, Farideh; Lake, Louis
Cc: Miller, Garry
Subject: FW: 2009 Oct 13 - Containment - NRC SIT Briefing.pptx
Importance: High

Call in on 352.563.4901. The NRC Entrance Meeting begins at 13:30.

Dennis W. Herrin

Lead Engineer - Licensing & Regulatory Programs
Progress Energy Florida, Inc.
Crystal River Unit 3
352-563-4633
Voicenet 240-3299
Dennis.Herrin@pgnmail.com

From: Miller, Garry
Sent: Tuesday, October 13, 2009 1:12 PM
To: Herrin, Dennis W.
Subject: 2009 Oct 13 - Containment - NRC SIT Briefing.pptx

C-20

Crystal River Unit #3

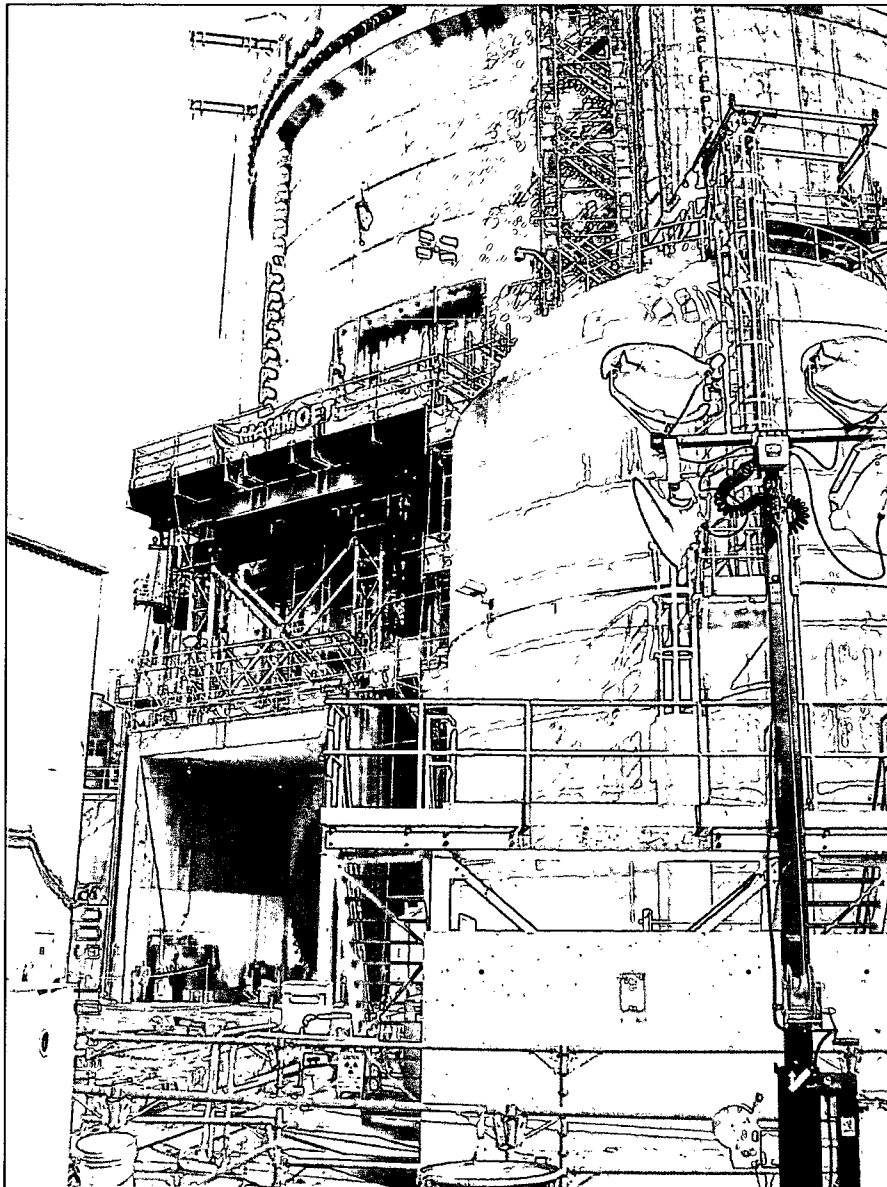
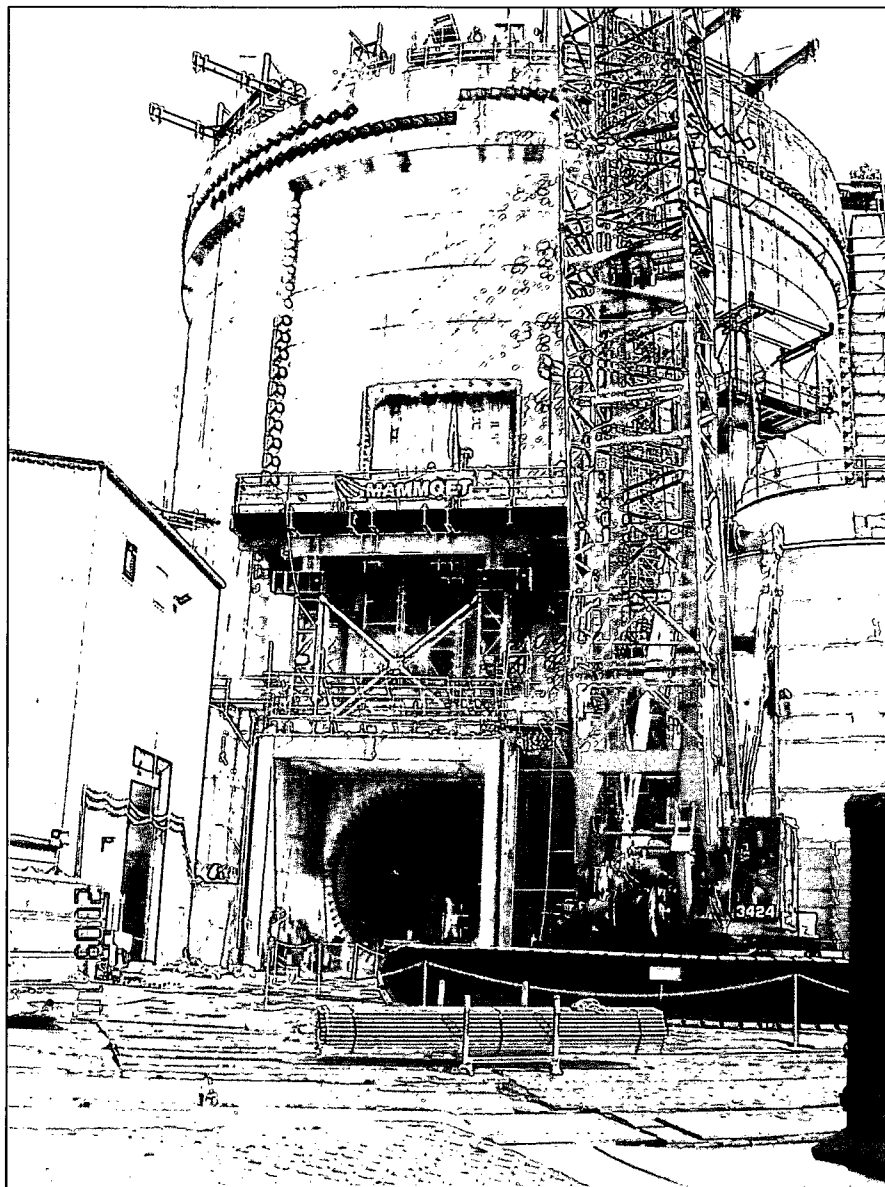
Containment Project Overview

Oct 13th 2009



Progress Energy

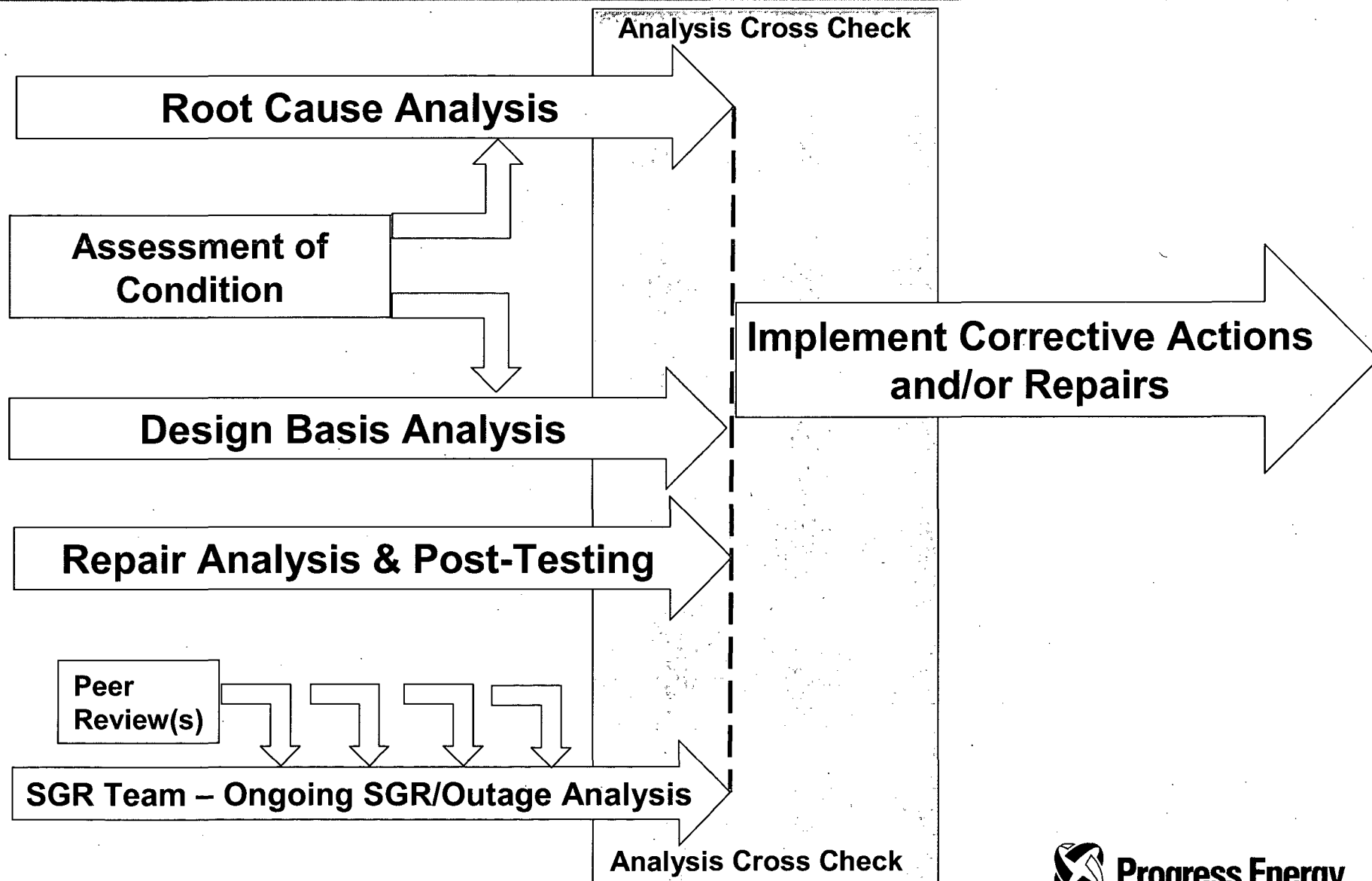
Photos



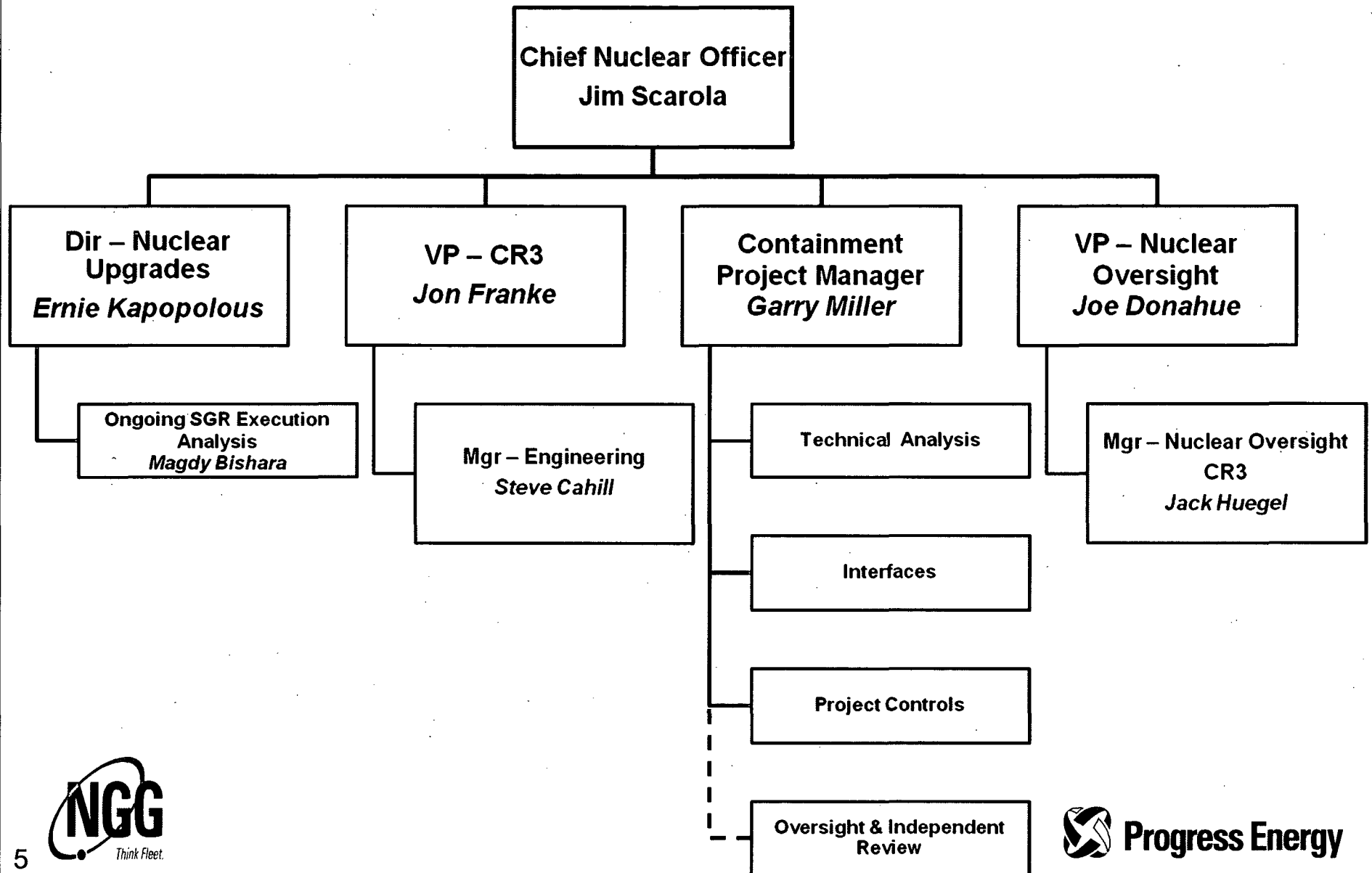
Mission

- Complete a comprehensive root cause analysis addressing cause and extent of condition and current/past operability, and identify necessary corrective actions and/or repairs that meet design/licensing basis requirements, and then direct implementation of those corrective actions and/or repairs, while supporting ongoing SGR execution.
- This will be achieved via:
 - Use of highly qualified PGN and industry subject matter experts (SMEs) and highly capable experienced A/E firms
 - Completion of specialized engineering analysis and acquisition of field data to support conclusions
 - Use of independent technical reviews for major work products
 - Use of effective project management controls
 - Integration with ongoing CR3 outage execution
 - Ongoing dialogue with the industry as the investigation advances

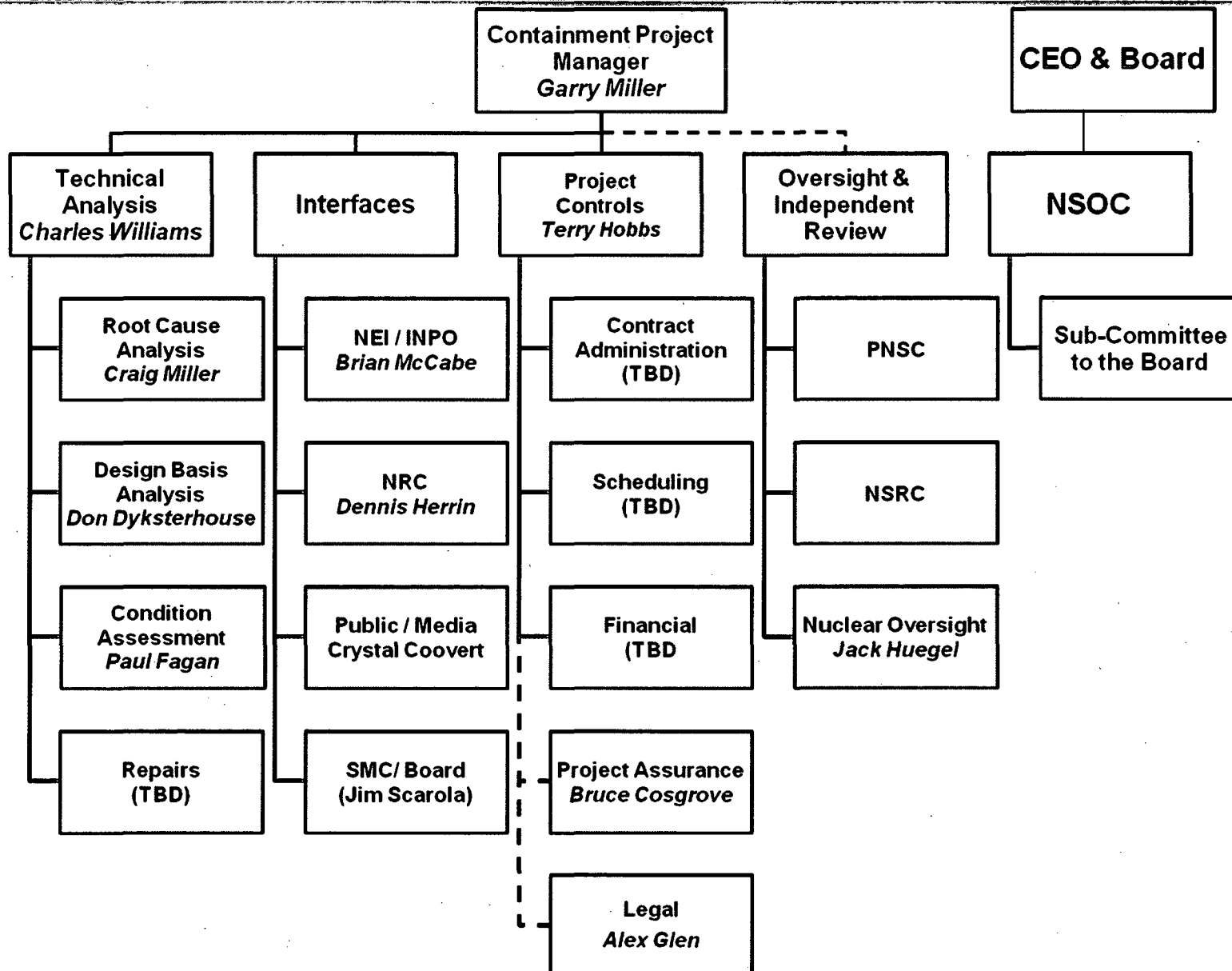
Project Work Flow



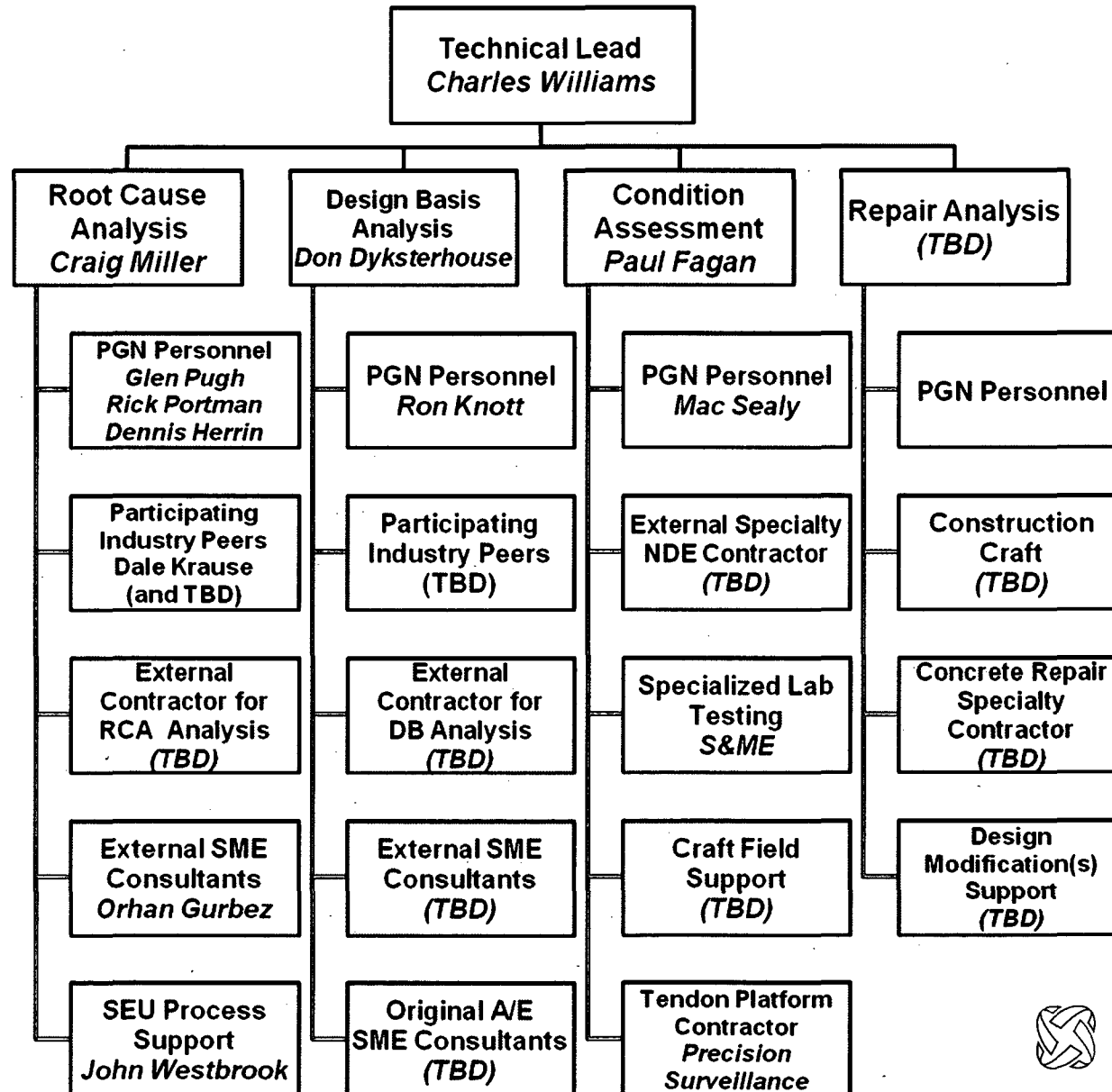
Organization – Reporting View



Organization – Functional View



Organization – Technical Structure



R16 Outage Timeline

Event	Current Schedule
Start Restoration of Liner	Nov 25, 2009
Start Concrete Placement	Dec 4, 2009
Start Fuel Load	Dec 8, 2009
ILRT	Dec 15, 2009
Return to Grid	Dec 24, 2009