



LEGEND

- ★ HAR Sites
- HNP
- Main Dam
- 1 Major Highways
- 8-km (5-mi.) Radius from Site
- - - 1-km (0.6-mi.) Radius from Site
- Faults (dashed where inferred, dotted where concealed)
(Ebasco, 1975, CP&L, 1983, NCGS, 1985, Wooten et al., 1996, Harding Lawson, 1997, NCGS, 2006, and this study)
- HF - Harris Fault
SBPF - South Borrow Pit Fault
W8 - W8 Fault
W82 - W82 Fault
- Point Fault (NCGS, 2006)
- - - Folds (dashed where inferred, dotted where concealed) (NCGS, 2006)
- - - Dikes (dashed where inferred)
(CP&L, 1983, NCGS, 1985, Wooten et al., 1996, Harding Lawson, 1997, NCGS, 2006, and Technos, this study)

Geology A (NCGS, 1985)

(Original Mapping Scale: 1:1,250,000)
See Figure 2.5.1-230, Sheet 2 for Description of Geologic Units

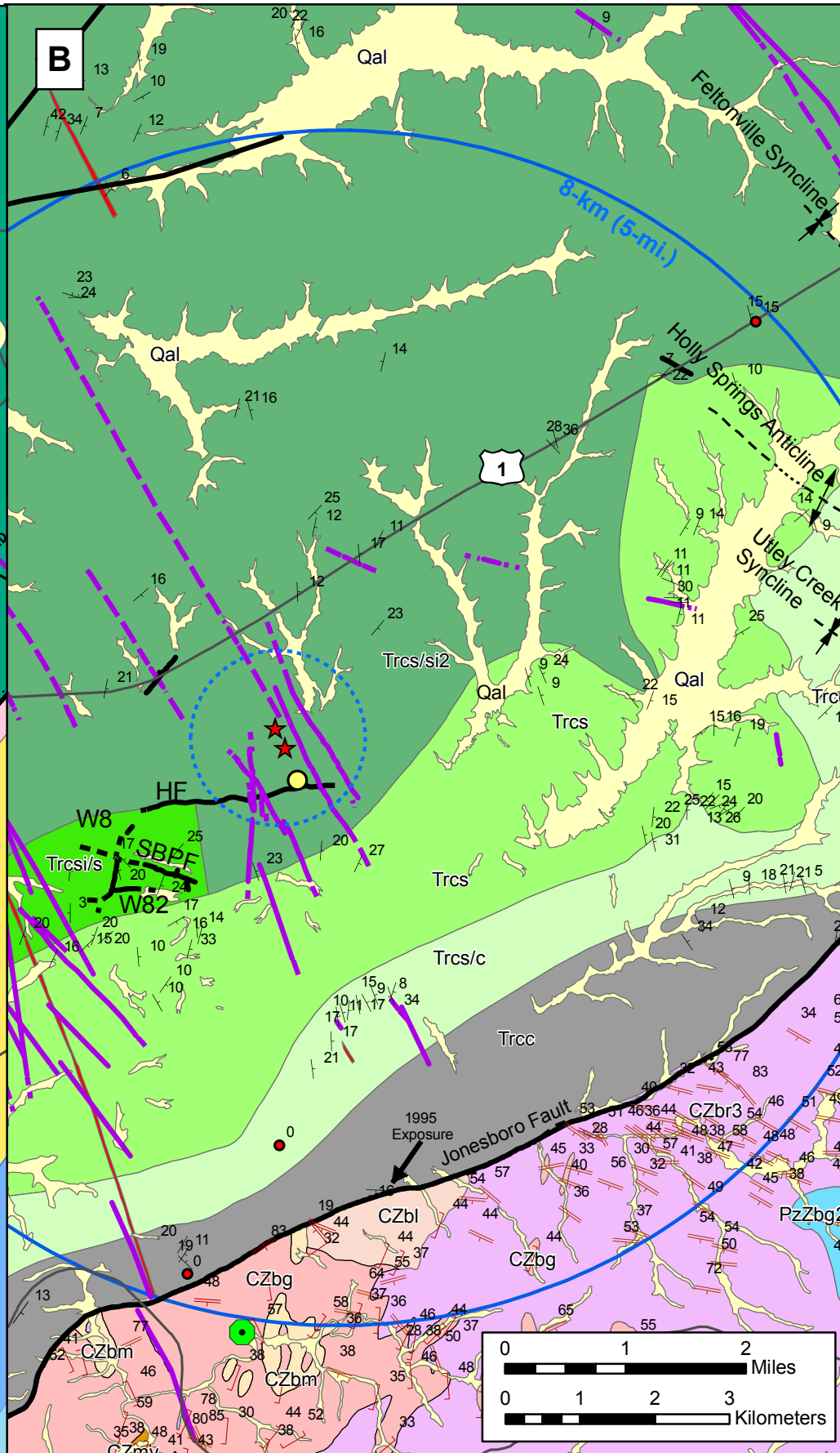
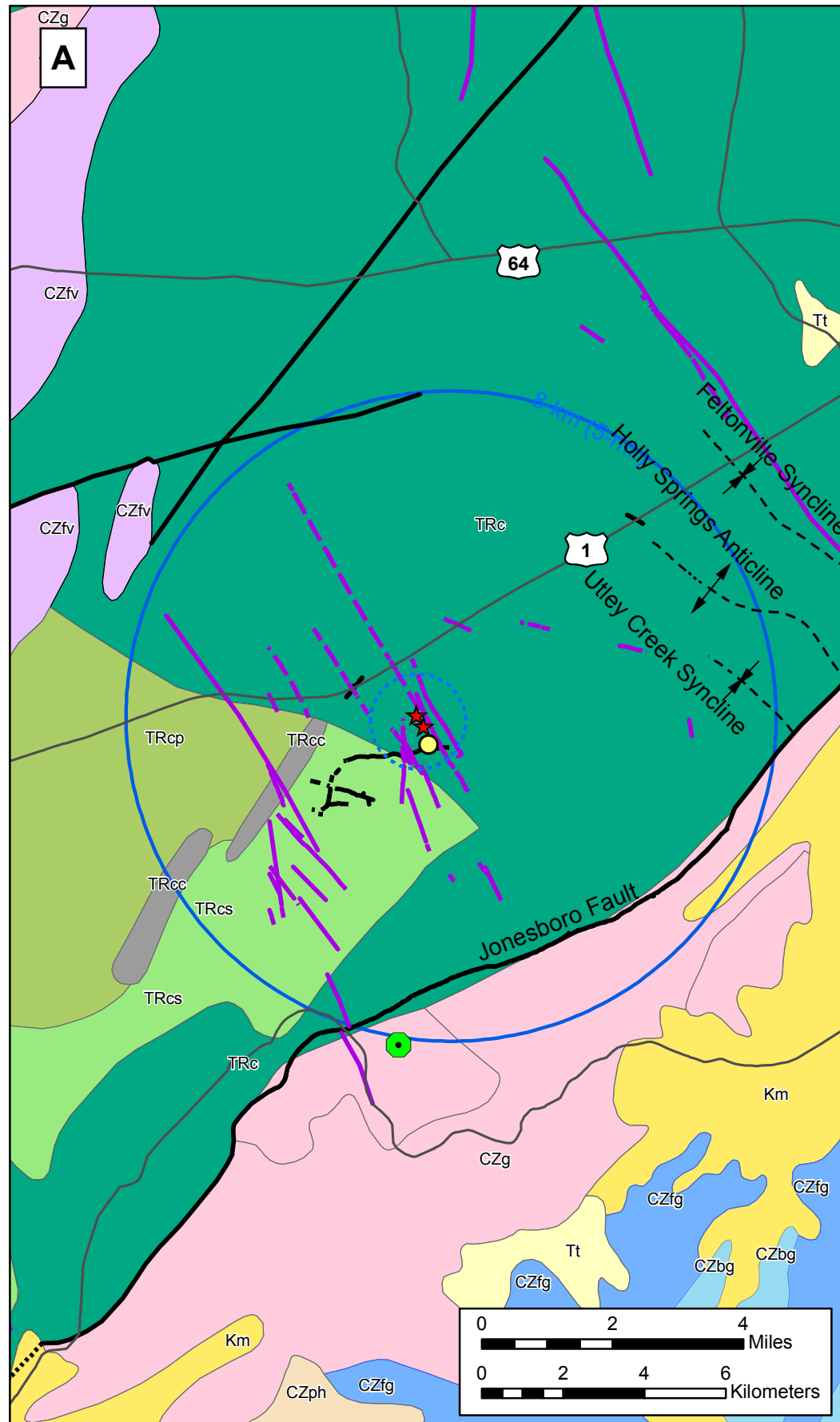
Tt	TRcc	CZbg	CZg
Km	TRcp	CZfg	CZv
TRc	TRcs	CZfv	CZve

Geology B (NCGS, 2006)

(Detailed Mapping Available for the New Hill and Cokesbury Quadrangles, Scale 1:24,000)
See Figure 2.5.1-231, Sheet 2 for Description of Geologic Units

Qal	Trcs/si2	CZbm
Jd	Trcs/s	CZbr3
Trcc	PzZbg2	CZmv
Trcs	CZbg	
Trcs/c	CZbl	

- | Strike and Dip of Bedding
- | Inclined Foliation
- | Inclined Secondary Cleavage



**Shearon Harris Nuclear Power Plant
Units 2 and 3
Part 2, Final Safety Analysis Report**
New Hill, North Carolina

Site Area Geologic Maps
(8-km [5-mi.] Radius)

DESCRIPTION OF GEOLOGIC UNITS SHOWN IN FIGURE 2.5.1-231, SHEET 1

- CZbg** BIOTITE GNEISS AND SCHIST - Inequigranular and megacrystic; in places contains garnet; interlayered and gradational with mica schist and amphibolite; includes small masses of granitic rock.
- CZbl** METAMORPHOSED LEUCOGRANITE OF THE BUCKHORN DAM INTRUSIVE SUITE - Light-colored, medium- to coarse-grained rocks with poorly developed foliation; composed mainly of plagioclase, quartz, and microcline with minor amounts of chlorite, sericite, epidote, biotite, and opaque minerals. The color index is usually less than 5.
- CZbm** METAMORPHOSED MAFIC ROCKS - Metagabbro and metadiorite: Dark green, coarse- to fine-grained, variably foliated rocks composed mainly of epidote, chlorite, hornblende (and/or actinolite), plagioclase, opaque minerals, and minor quartz.
- CZbr3** BIG LAKE-RAVEN ROCK SCHIST 3 - Light tan to orange brown, fine- to medium-grained, white mica schist to gneiss.
- CZmv** MAFIC METAVOLCANIC ROCK - Metamorphosed basalt flows and tuffs, dark green to black; interbedded with felsic and intermediate metavolcanic rock and metamudstone.
- Jd** JURASSIC DIABASE DIKES
- PzZbg2** DUNCAN METAGRANITE - Light pinkish gray, medium-grained, nonfoliated to weakly foliated, leucocratic (Cl<10) garnet- and epidote-bearing biotite metagranite.

Source: NCGS (2006)

- Trcc** CONGLOMERATE - Reddish brown to dark brown, irregularly bedded, poorly sorted, cobble to boulder conglomerate. Consists of >50% conglomerate. Clasts are mostly felsic and intermediate metavolcanic rocks, quartz, epidote, bluish gray quartz crystal tuff, muscovite schist, and rare metagranitic material.
- Trcs** INTERBEDDED SANDSTONE/PEBBLY SANDSTONE (Lithofacies Association II - Reddish brown to dark brown, irregularly bedded to massive, poorly to moderately sorted, medium- to coarse-grained, muddy lithic arkoses, with occasional, matrix-supported granules and pebbles as 1 to 5 cm basal layers.
- Trcs/si2** SANDSTONE WITH INTERBEDDED SILTSTONE (Lithofacies Association II - Whitish yellow to grayish pink to pale red, coarse- to very coarse grained, trough cross-bedded lithic arkose that fines upward through yellow to reddish brown, burrowed, rooted siltstone.
- Trcsi/s** SILTSTONE WITH INTERBEDDED SANDSTONE Lithofacies Association II - Reddish brown, extensively bioturbated, muscovite-bearing siltstone interbedded with tan to brown, fine- to medium-grained, muscovite-bearing, arkosic sandstone, usually less than one meter thick.
- Trcs/c** SANDSTONE WITH INTERBEDDED CONGLOMERATE Lithofacies Association II - Reddish brown to dark brown, irregularly bedded, poorly sorted, coarse-grained to pebbly, muddy lithic sandstones with interbedded pebble to cobble conglomerate.
- Qal** QUATERNARY ALLUVIUM

Progress Energy Carolinas Shearon Harris Nuclear Power Plant Units 2 and 3 Part 2, Final Safety Analysis Report New Hill, North Carolina
Site Area Geologic Maps (8-km [5-mi.] Radius) FIGURE 2.5.1-231 (SHEET 2 OF 2) Rev. 1