

Well Identification	Bedrock Water Level Elevation (feet NGVD29)
ADP-21A	218.81
ADP-23	236.89
LP-2	254.65
LP-5	246.18
LP-6	246.31
LP-7	246.44
LP-9	223.18
LP-13/GW-57	234.30
LP-16	227.07
MWA-2D	252.12
MWA-3D	253.86
MWA-4D	255.62
MWA-5D	249.80
MWA-7D	268.29
MWA-8D	248.04
MWA-9D	247.98
MWA-10D	252.28
MWA-12	235.94
MW-1 (LF)	249.11
MW-2 (LF)	259.75
MW-3 (LF)	260.07
MW-6 (LF)	248.41
MW-7 (LF)	275.16
W-5	242.07
W-5A	239.57
W-8A/GW-58	238.42
W-9A/GW-60	219.32
W-12	237.17
W-13/GW-59	226.00
W-14	251.44
WAD-1/GW-39	234.04

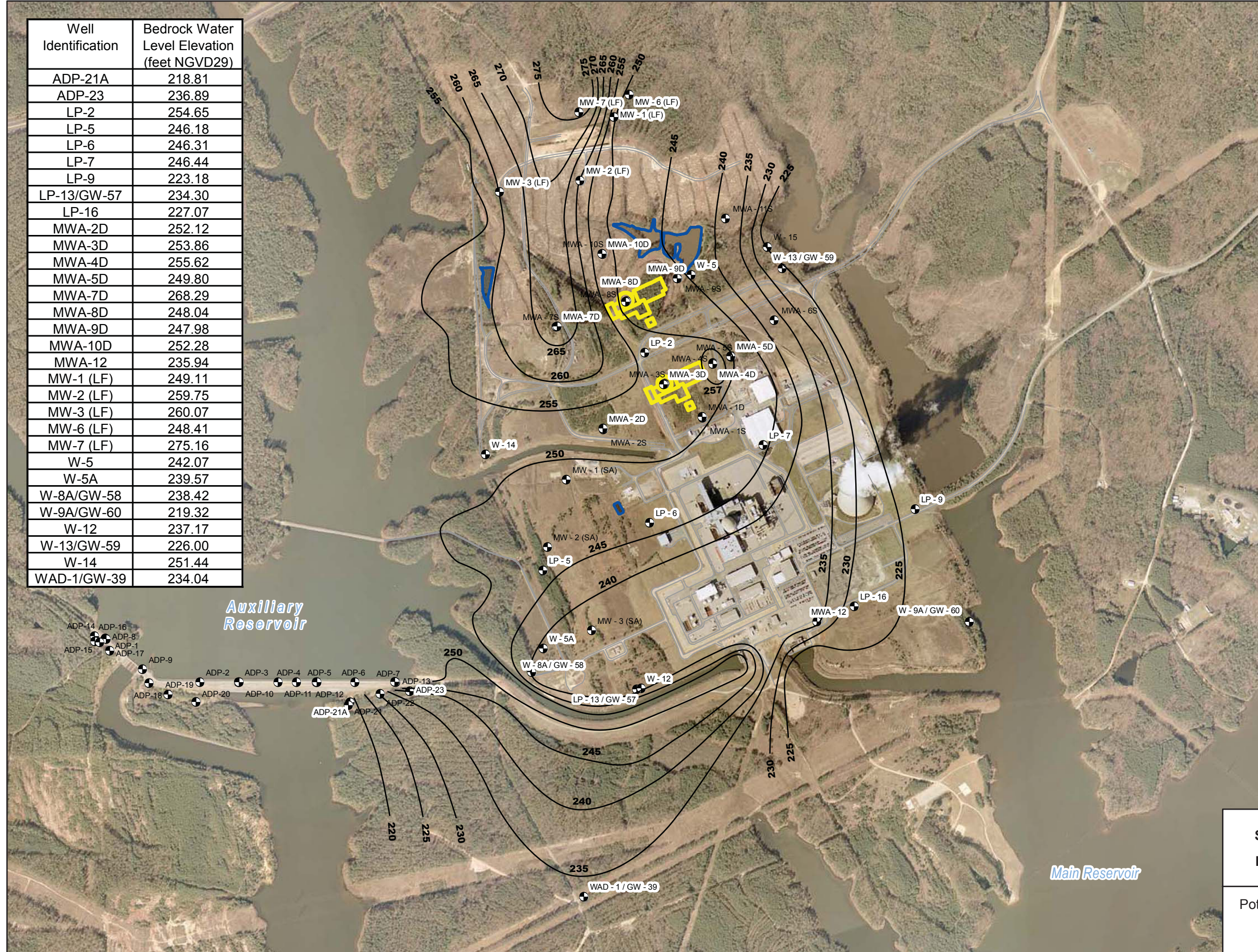
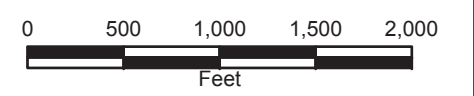
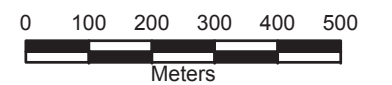


LEGEND

- Plant Site Monitoring Wells and Piezometers
- Proposed Safety-Related Structures
- Ponds
- Equipotential Lines

Note:

- 1) Main Reservoir also known as Harris Reservoir.
- 2) Auxiliary Reservoir normal pool elevation is 252-ft NGVD29.
- 3) Main Reservoir normal pool elevation is 220-ft NGVD29.



Progress Energy Carolinas
**Shearon Harris Nuclear Power Plant
 Units 2 and 3**
Part 2, Final Safety Analysis Report
 New Hill, North Carolina

Potentiometric Surface Map of the Bedrock
 Aquifer: August 28, 2006
FIGURE 2.4.12-204

Rev 0