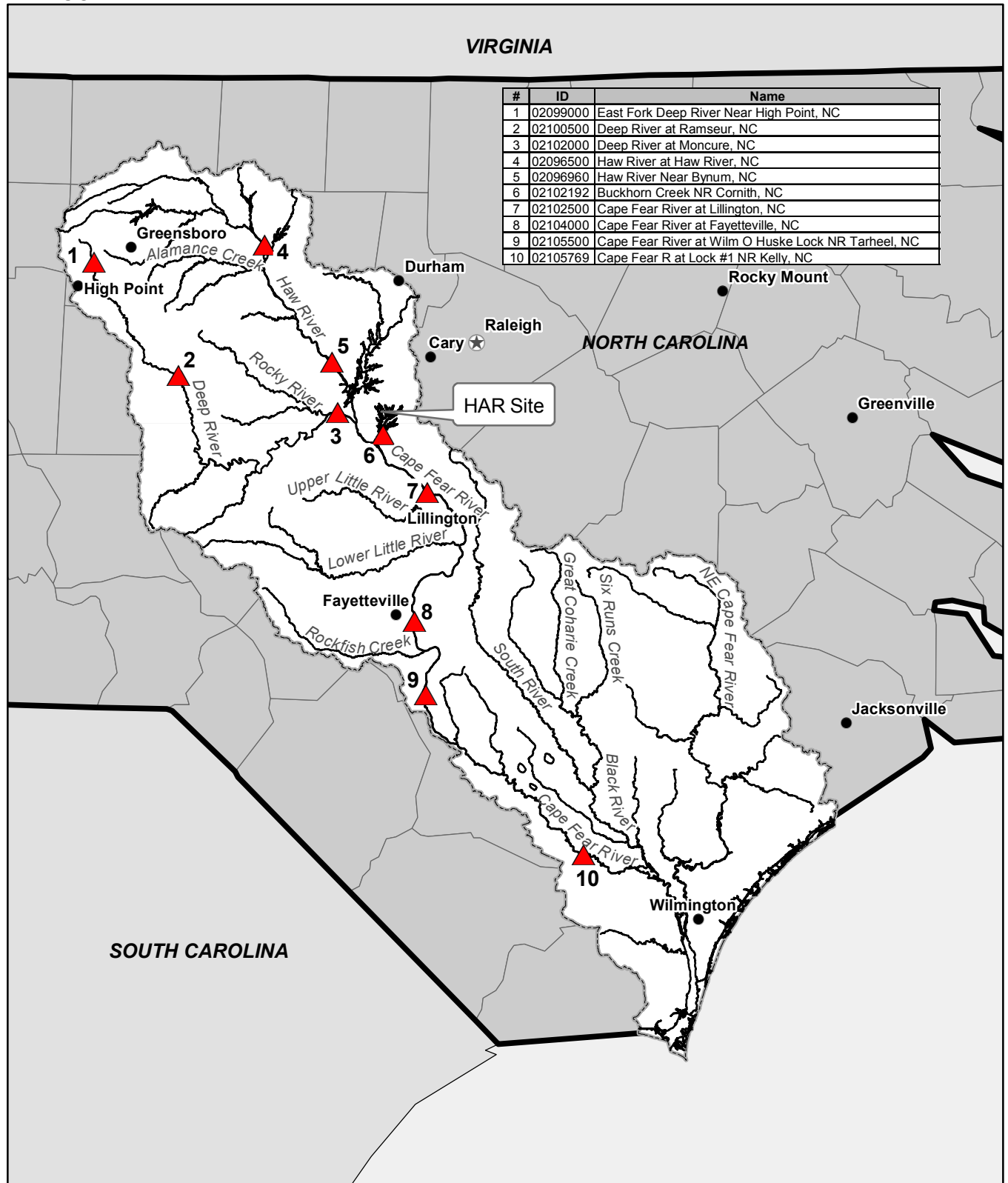


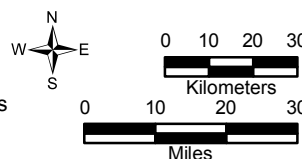
VIRGINIA

#	ID	Name
1	02099000	East Fork Deep River Near High Point, NC
2	02100500	Deep River at Ramseur, NC
3	02102000	Deep River at Moncure, NC
4	02096500	Haw River at Haw River, NC
5	02096960	Haw River Near Bynum, NC
6	02102192	Buckhorn Creek NR Cornith, NC
7	02102500	Cape Fear River at Lillington, NC
8	02104000	Cape Fear River at Fayetteville, NC
9	02105500	Cape Fear River at Wilm O Huske Lock NR Tarheel, NC
10	02105769	Cape Fear R at Lock #1 NR Kelly, NC



**LEGEND**

- HAR Site
- USGS Monitoring Stations
- State Capital
- Selected Cities
- Cape Fear Major Lakes, Rivers, and Streams
- Cape Fear River Basin Boundary
- North Carolina County Boundaries
- North Carolina State Boundary



Progress Energy Carolinas

**Shearon Harris Nuclear Power Plant  
Units 2 and 3  
Part 2, Final Safety Analysis Report**

New Hill, North Carolina

---

USGS Monitoring Stations on the  
Deep, Haw, and Cape Fear River

FIGURE 2.4.1-210

Rev 0