

Washington DC

TSX-V : TUE

FRANKFURT : T4X



WWW.TITANURANIUM.COM

April 2010



FORWARD-LOOKING STATEMENT

Statements in this release that are forward-looking statements are subject to various risks and uncertainties concerning the specific factors identified in Titan's periodic filings with Canadian Securities Regulators. Such forward-looking information represents management's best judgment based on information currently available. No forward-looking statement can be guaranteed and actual future results may vary materially. Titan does not assume the obligation to update any forward-looking statement. This presentation is not a solicitation by Titan as an offer to sell its securities.



OUTLINE

- Corporate Overview
- Sheep Mountain Uranium Project
- Heap Leach Recovery
- Conclusion



Corporate Overview



VISION

- To be a leading mid-tier North American uranium exploration, development and mining company.

MISSION

- To increase shareholder value by advancing quality projects to production.

VALUES

- To embrace the values of corporate social responsibility.



STRATEGY

- **Develop:**
 - Sheep Mountain Deposit
- **Discover:**
 - World-class deposit(s)
- **Consolidate:**
 - Saskatchewan & Wyoming



The Board

Don Ching

Lawyer

Former President & CEO Areva

Richard Patricio

Lawyer

Executive VP Mega Uranium

Rahoul Sharan

Chartered Accountant

Former Chair Uranium Power Corp.

Arni Johannson

Businessman

Principal Canadian Nexus

Brian Reilly

Geologist

Former VP Areva



The Management

Brian Reilly

M.Sc.,M.B.A.,P.Geo.

President & CEO

25 yr exploration, development & mining
Areva

Chris Healey

B.Sc.,P.Geo.

Chief Operating Officer

40 yr exploration, development & mining
Cameco

Kelly McShane

B.Comm.,M.P.Acc.,C.A.

Chief Financial Officer

7 yr accounting & finance



The Technical Team

Rod Koch

B.Sc., P.Geo.

Vice-President Exploration Canada

35 yr exploration & mining

Areva & Cameco

Greg Adams

B.Sc.

Vice-President Exploration USA

35 yr exploration, development & mining

Cameco

Allan McNutt

M.A.Sc., P.Geo.

Vice-President Corporate Acquisitions

30 yr exploration & development

Cameco & Rio Algom

Dr. Ping Dong

PhD., P.Geo.

Senior Geologist

25 yr. exploration and research

Claude Res. & Geol. Survey of China



The Technical Consultants

Douglas Beahm

B.Sc., P.G., P.E.

President BRS Inc.

35 yr exploration, development, mining
production & reclamation

David Scriven

B.Sc. , P.E.

President Western States Mining

32 yr mine engineering services

Toby Wright

M.Sc., P.G.

Principal, Wright Environmental

20 yr licensing, permitting & environment

Dr. Terry McNulty

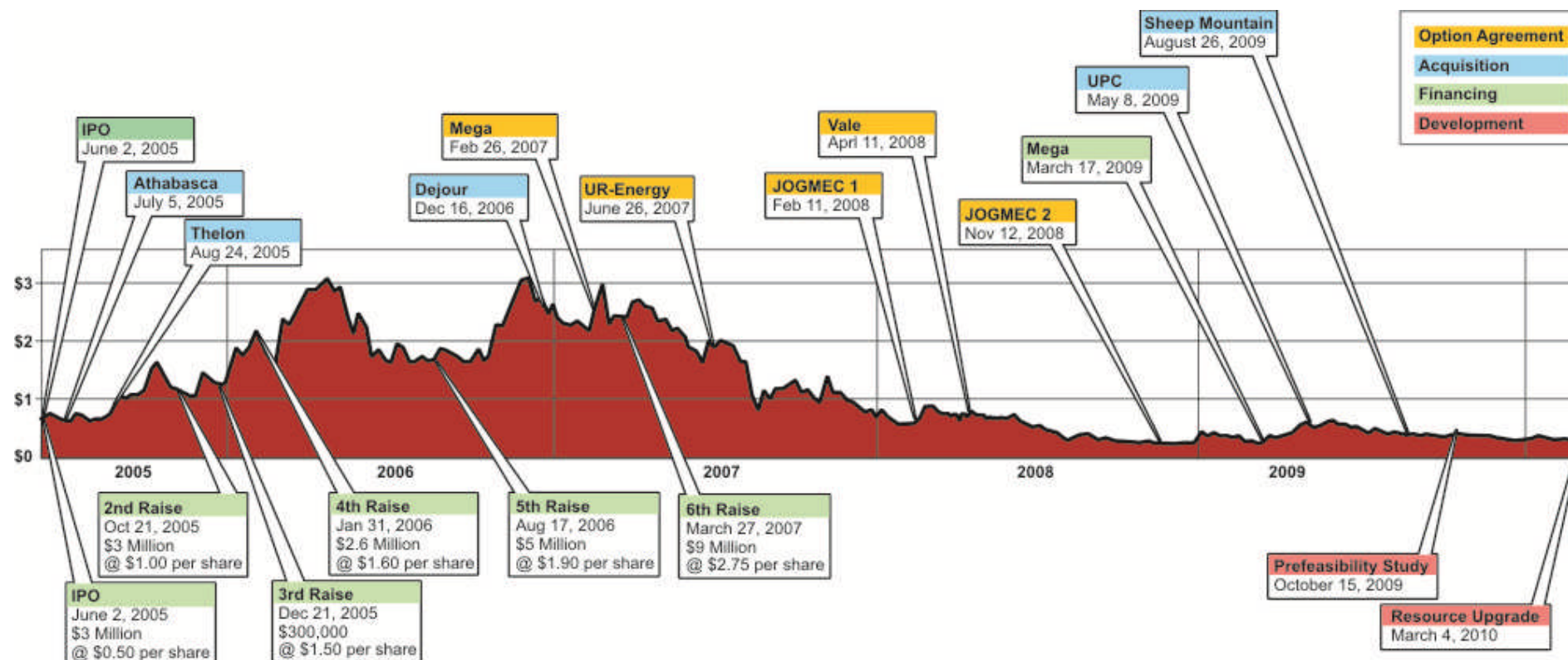
PhD., P.E.

President T.P. McNulty & Associates

50 yr metallurgy & chemical engineering



Corporate History



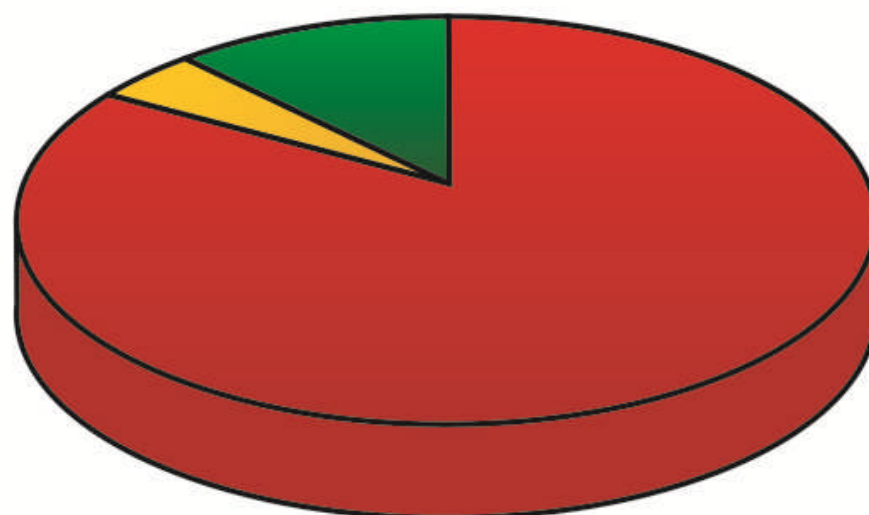


Share Structure

Shares Fully Diluted = 110.9M

Shares Outstanding = 105.9M

Annual Trading Range \$0.11 to \$0.64

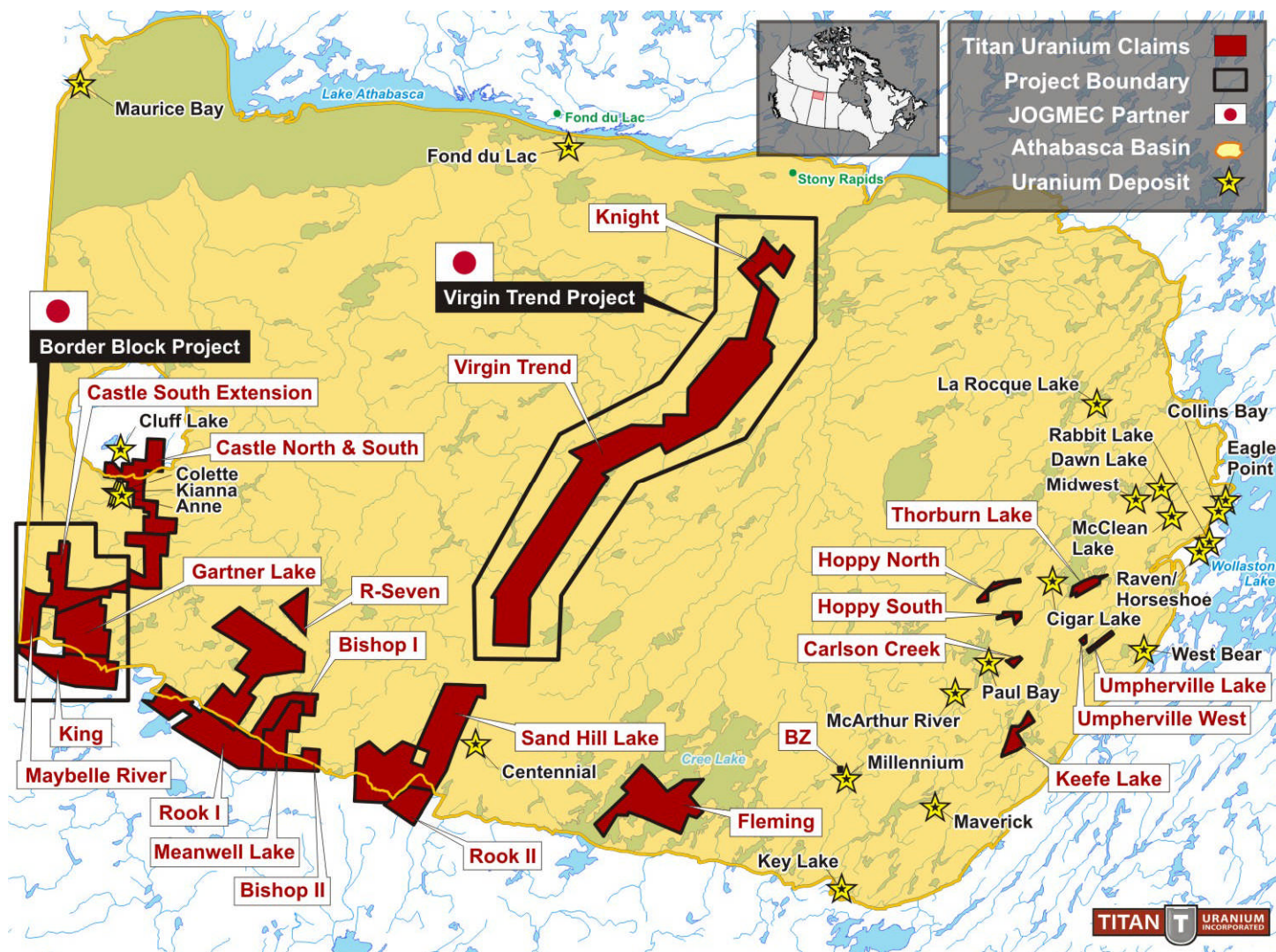


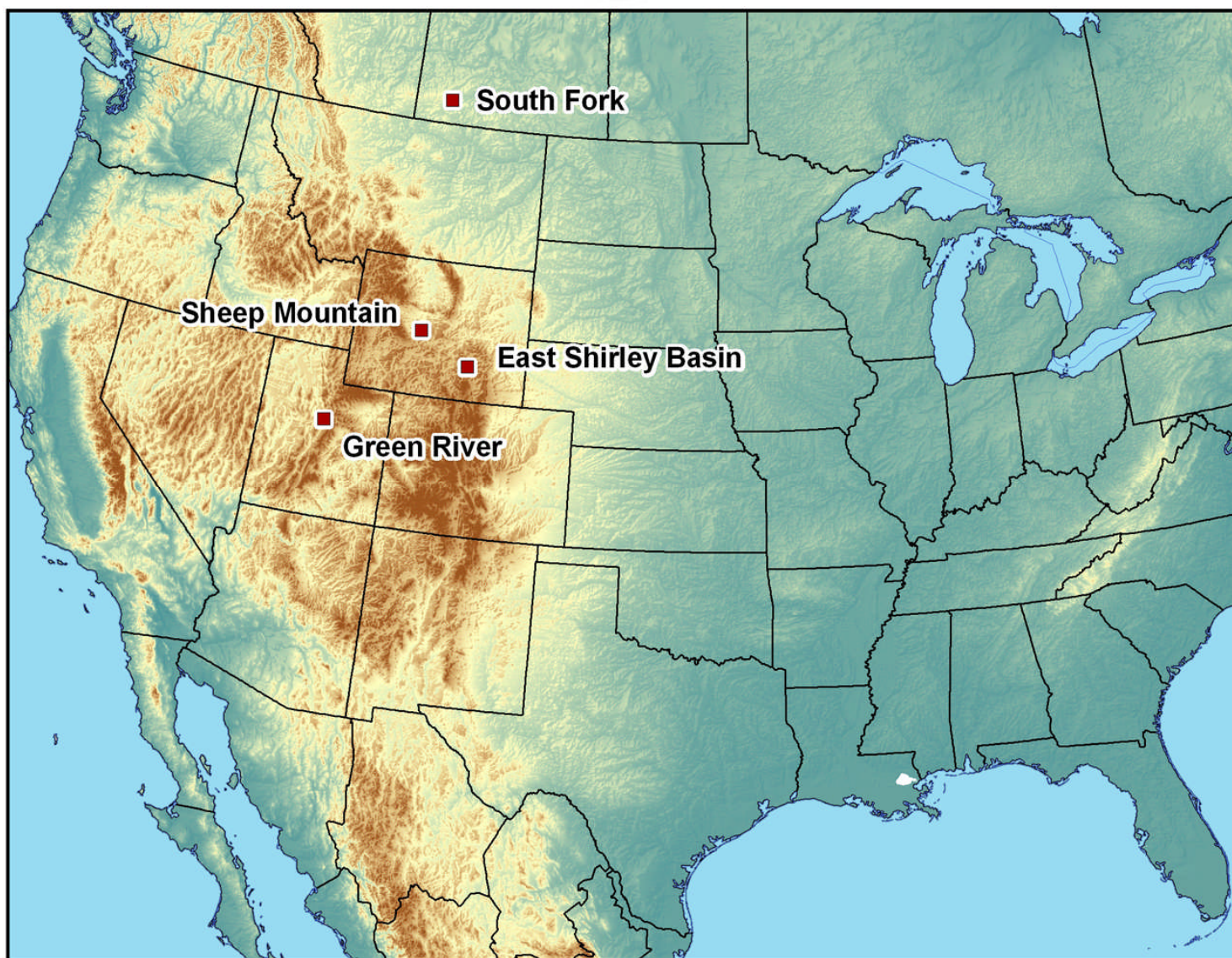
■	Float 92.2M
■	Mega Uranium 13.7M
■	Options 3.7M





Athabasca Basin Properties







Sheep Mountain Uranium Project



Licenses & Permits

- Previously mined from 1956 – 1988
- Probable reserve 14.2 M lbs eU₃O₈ (6.4M tons @0.111% eU₃O₈)
- Active WYDEQ Mine permit
- Previous NRC Source Material License for GMIX within mine permit boundary



Proposed Mining Methods

- Conventional open pit
- Conventional underground operation
- Heap leach technology planned to extract uranium
- Uranium recovery planned solvent extraction through to yellowcake



Project Cost Summary

- Positive preliminary feasibility study (April 12, 2010)
- CAPEX \$118 million; **\$ 9.00/lb rec.**
- Open Pit OPEX \$19.28 per ton; **\$12.42/lb rec.**
- Underground OPEX \$52.24; **\$21.71/lb rec.**
- Mineral OPEX \$13.51 per ton; **\$ 6.69/lb rec.**
- County/State taxes plus royalties add \$5.00 per ton;
\$ 2.48/lb rec.
- Weighted Avg. OPEX \$57.89 per ton;
\$28.67/lb rec.



Investment Return – Pre Tax

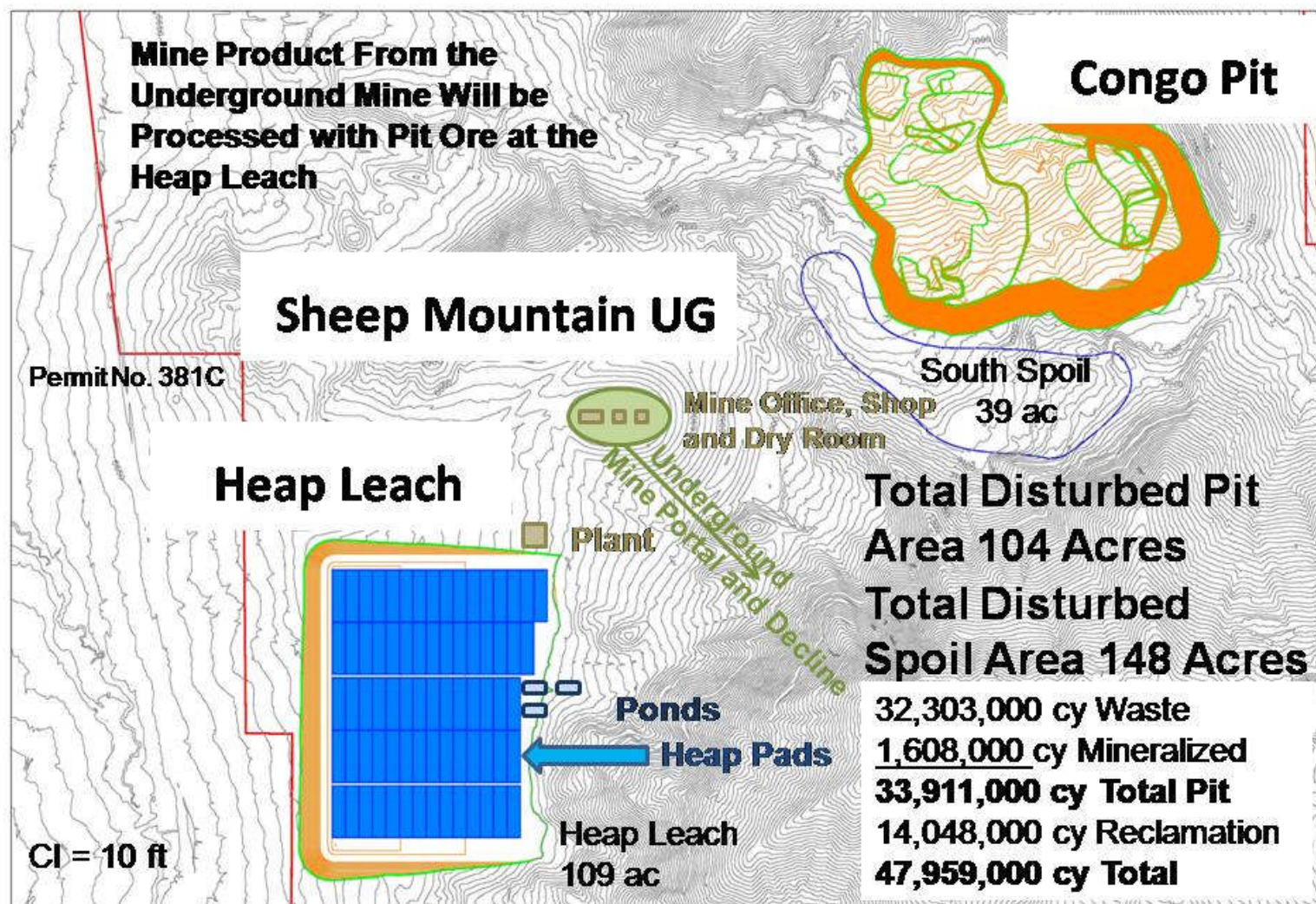
- **IRR 25%**
- **NPV 5% - \$129 Million**
- **NPV 7% - \$101 Million**
- **NPV 10% - \$ 69 Million**



Total Probable Mineral Reserve

	Min GT	Pounds eU ₃ O ₈	Tons	Ave grade %eU ₃ O ₈
Congo Pit	0.10	4,398,000	2,895,000	0.085
Sheep UG	0.46	9,248,000	3,498,000	0.132
Total		14,186,000	6,393,000	0.111

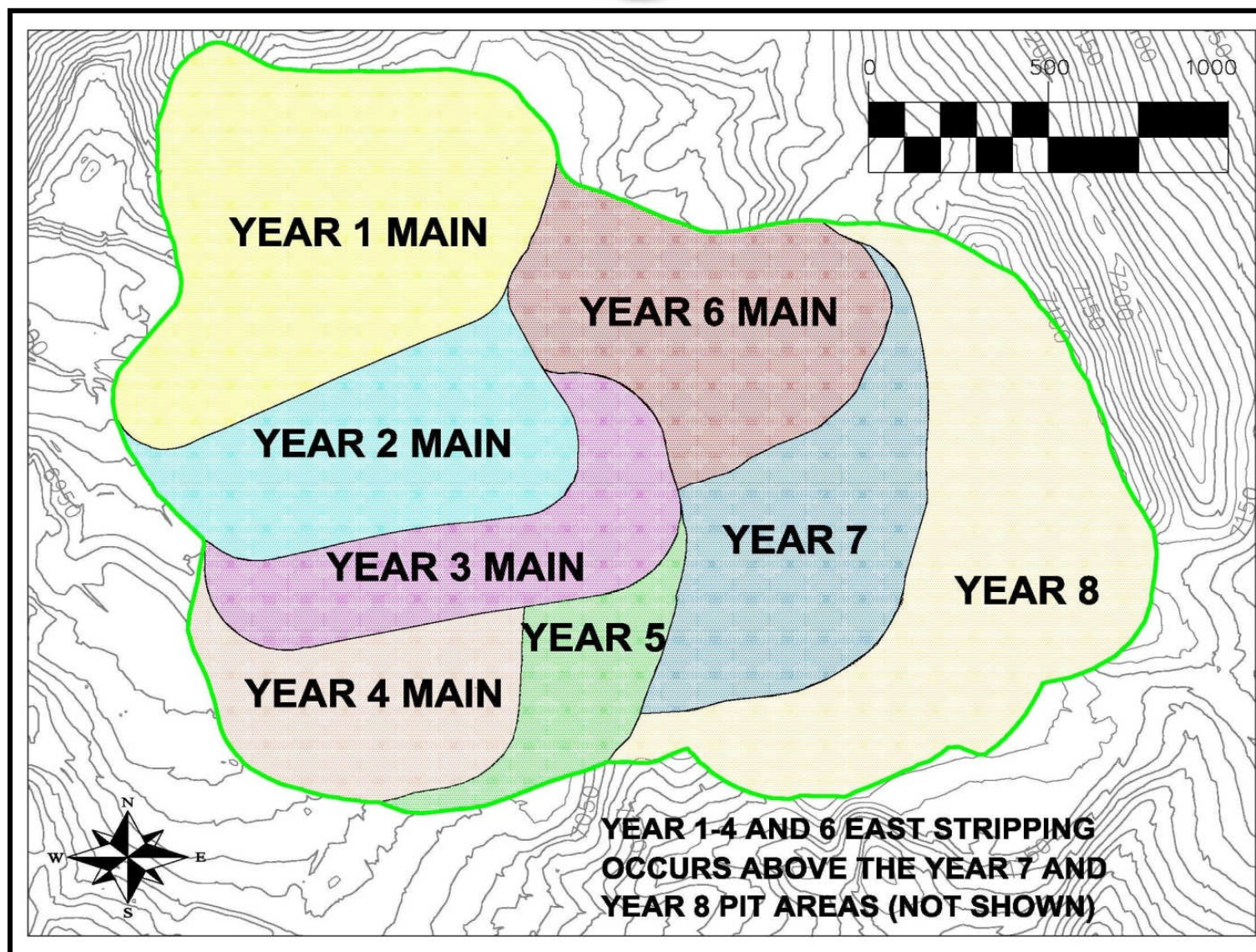
Recoverable - 12,908,000 Pounds





Congo Pit Summary

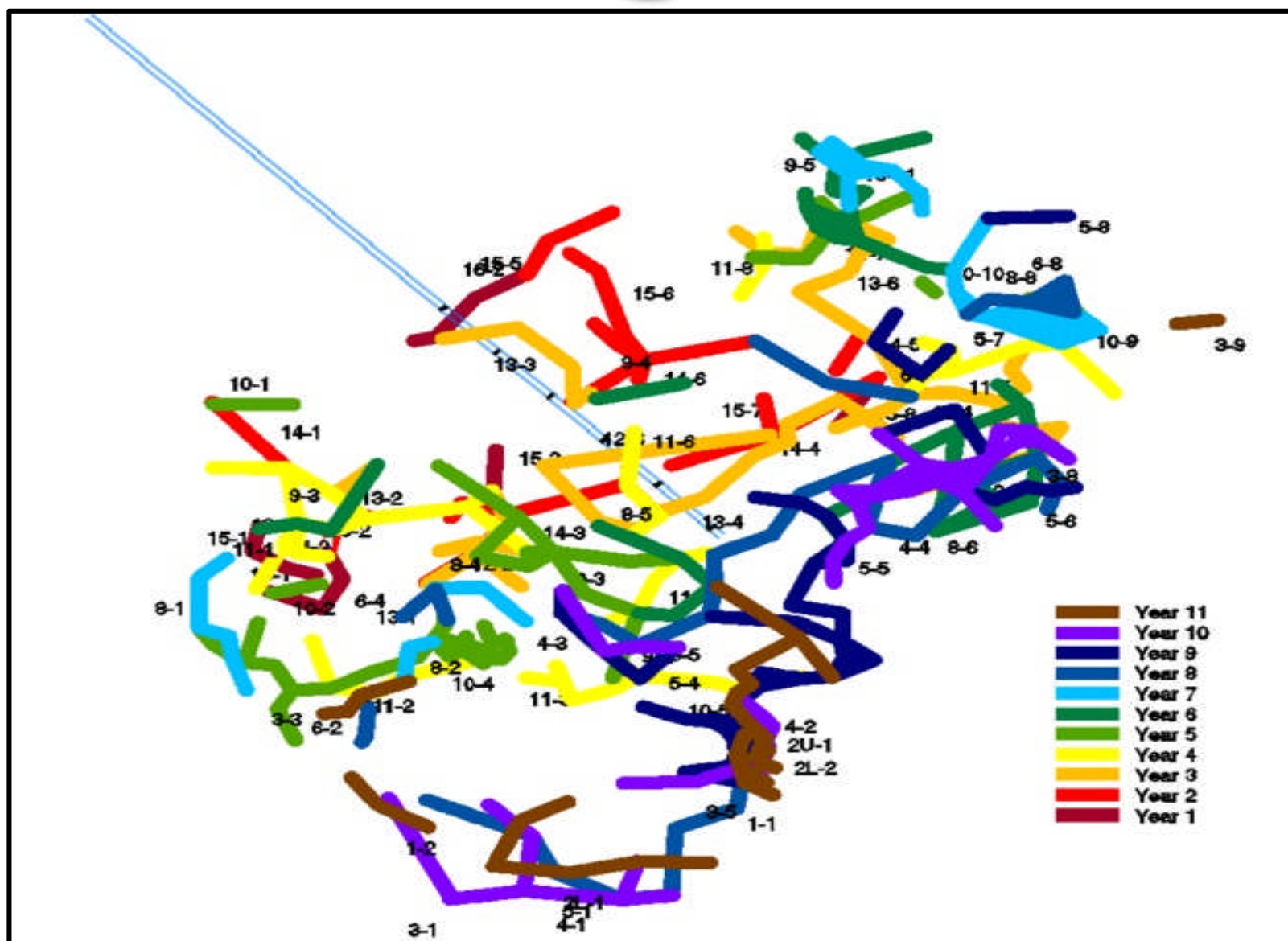
- The planned open pit has a total volume of 32,200,000 cubic yards of overburden
- 2,895,000 tons
- 4,938,000 pounds
- The stripping ratio of the pit
 - expressed as cy overburden to cy ore 20:1
 - expressed as cubic yards overburden to pounds of uranium contained is approximately 6.5:1.





Sheep Underground

- Sheep Underground
 - Re-opening of previously operated conventional mine
 - Allowed under Permit to Mine No. 381C.
- Mining method is a conventional method using a modified room and pillar.
 - A new double entry haulage decline
 - Conveyor haulage
 - The existing shafts will be used for ventilation and emergency access





Heap Leach

- Successful Mineral Processing History
- Commercial Heap Leach Operations
 - WNC and UCC
- Current Metallurgical Testwork Confirmation
 - Used conservative acid consumption and recovery
 - Acid locally available
- Stand Alone Facility
 - Produces yellowcake

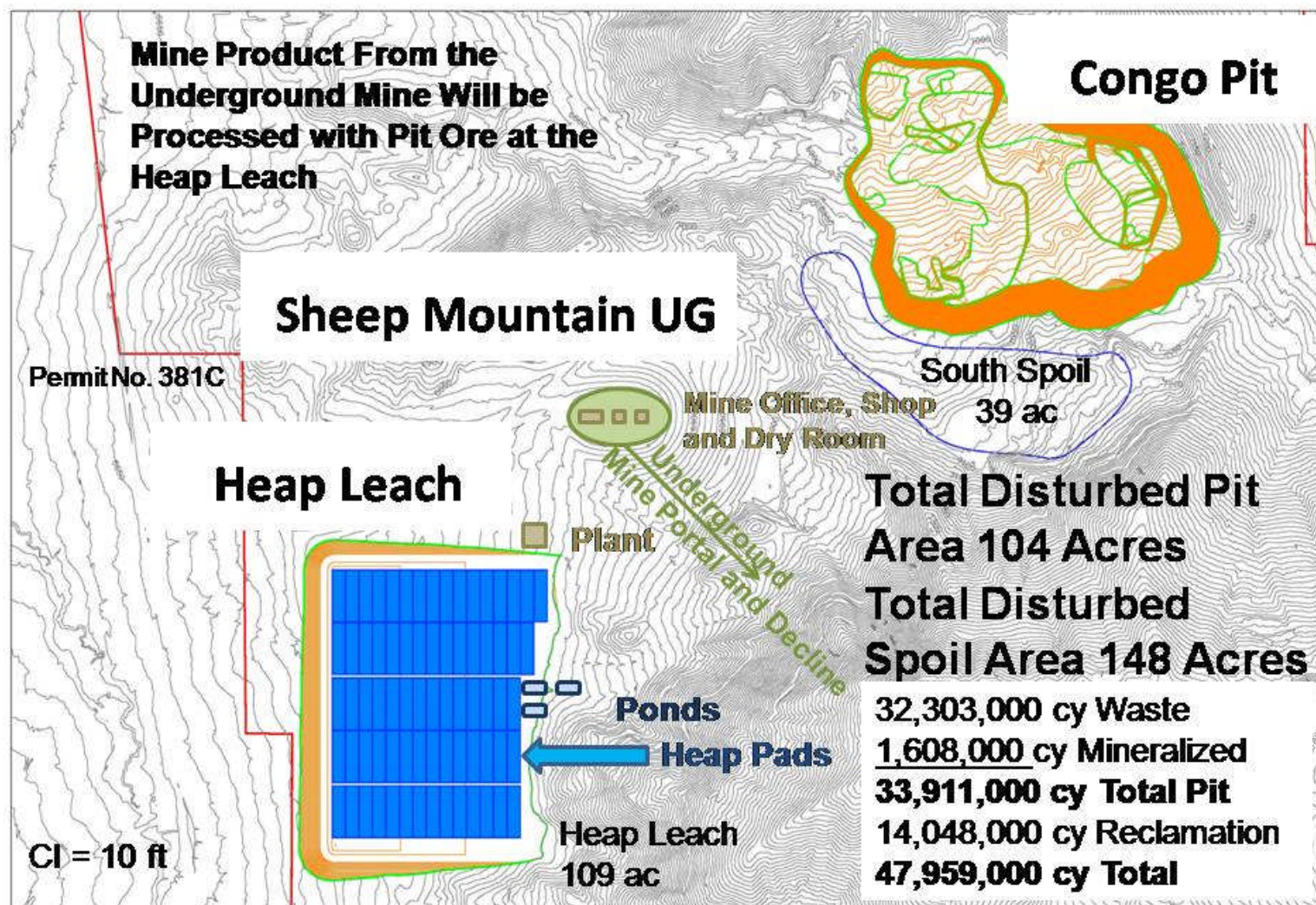


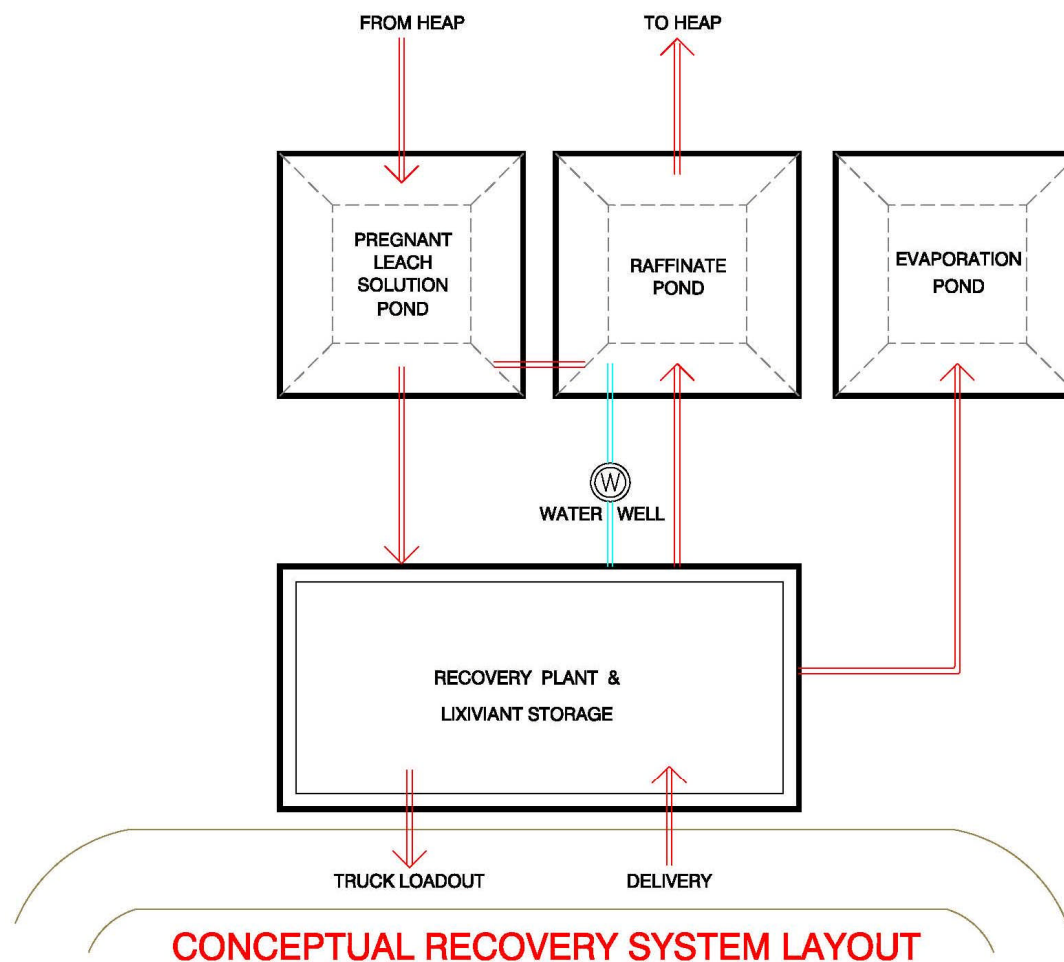
Personnel

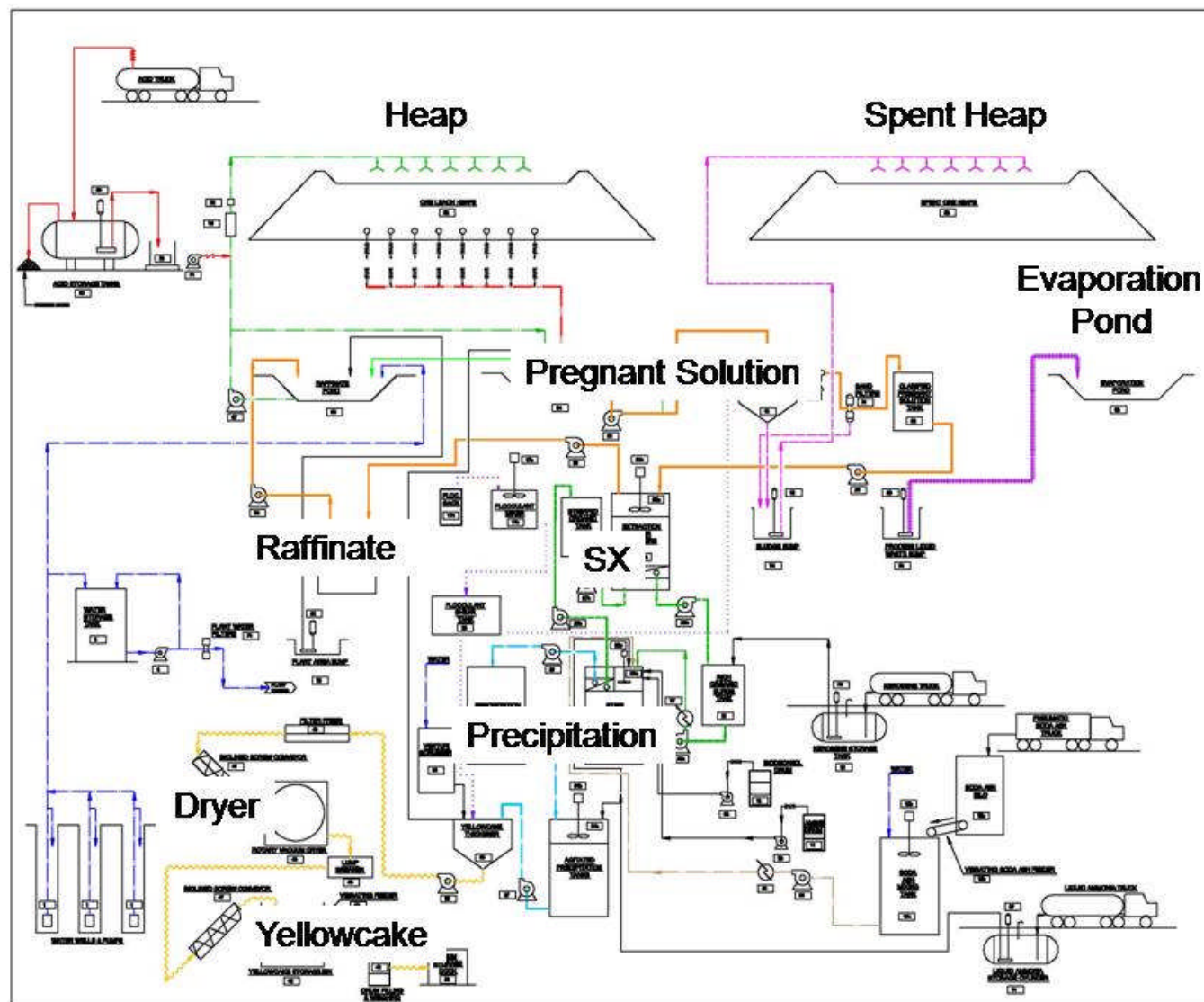
- 200 Total
 - 40 Open Pit and overall Staff
 - 40 Heap and Plant
 - 120 Underground



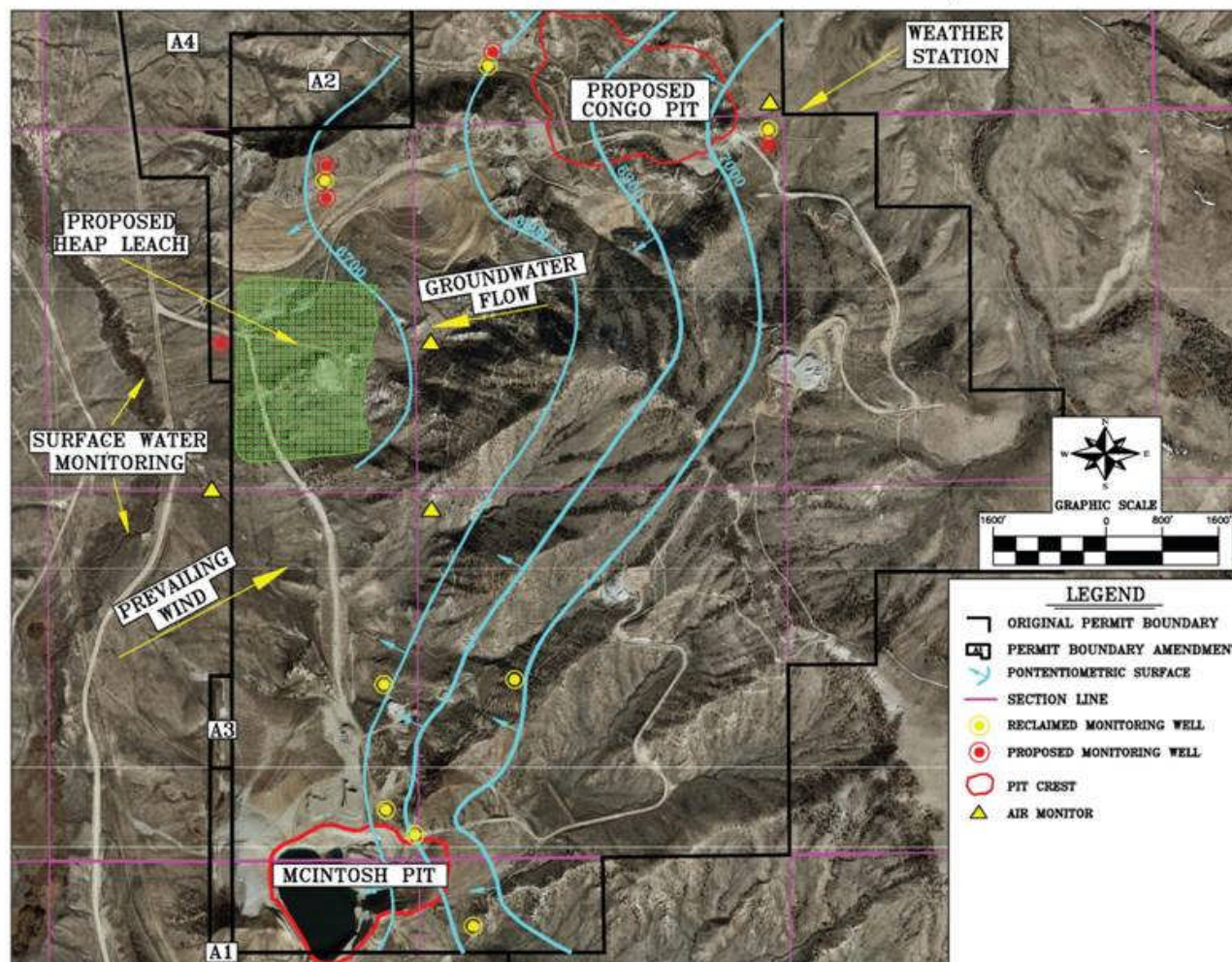
Heap Leach Recovery

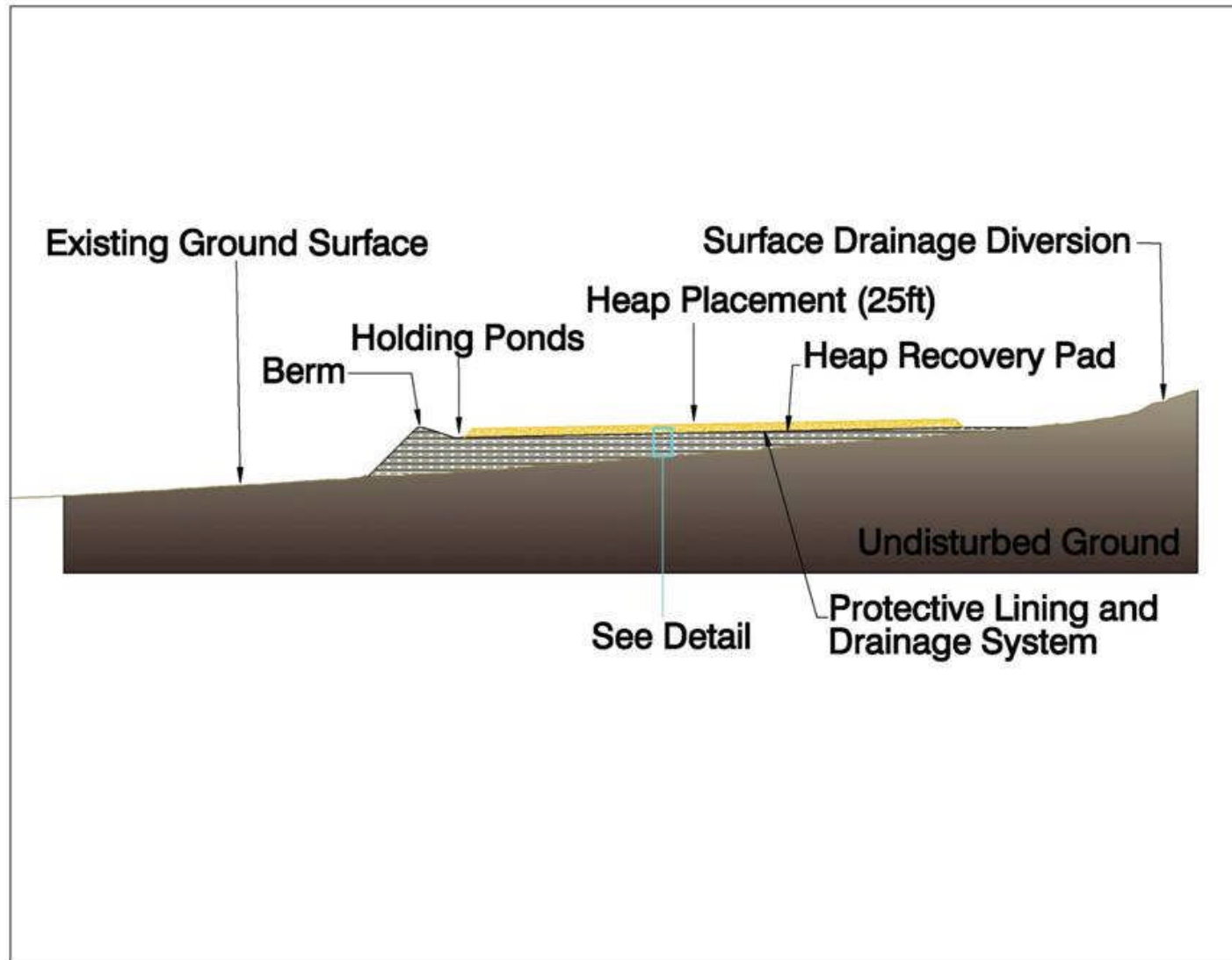


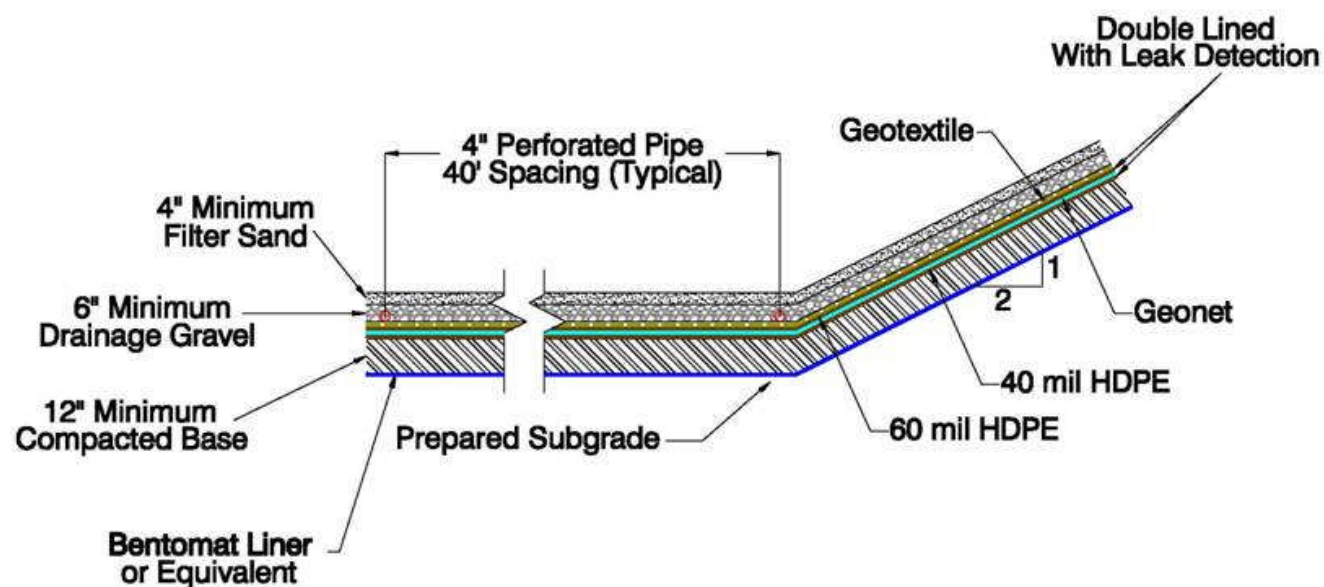




Environmental Monitoring

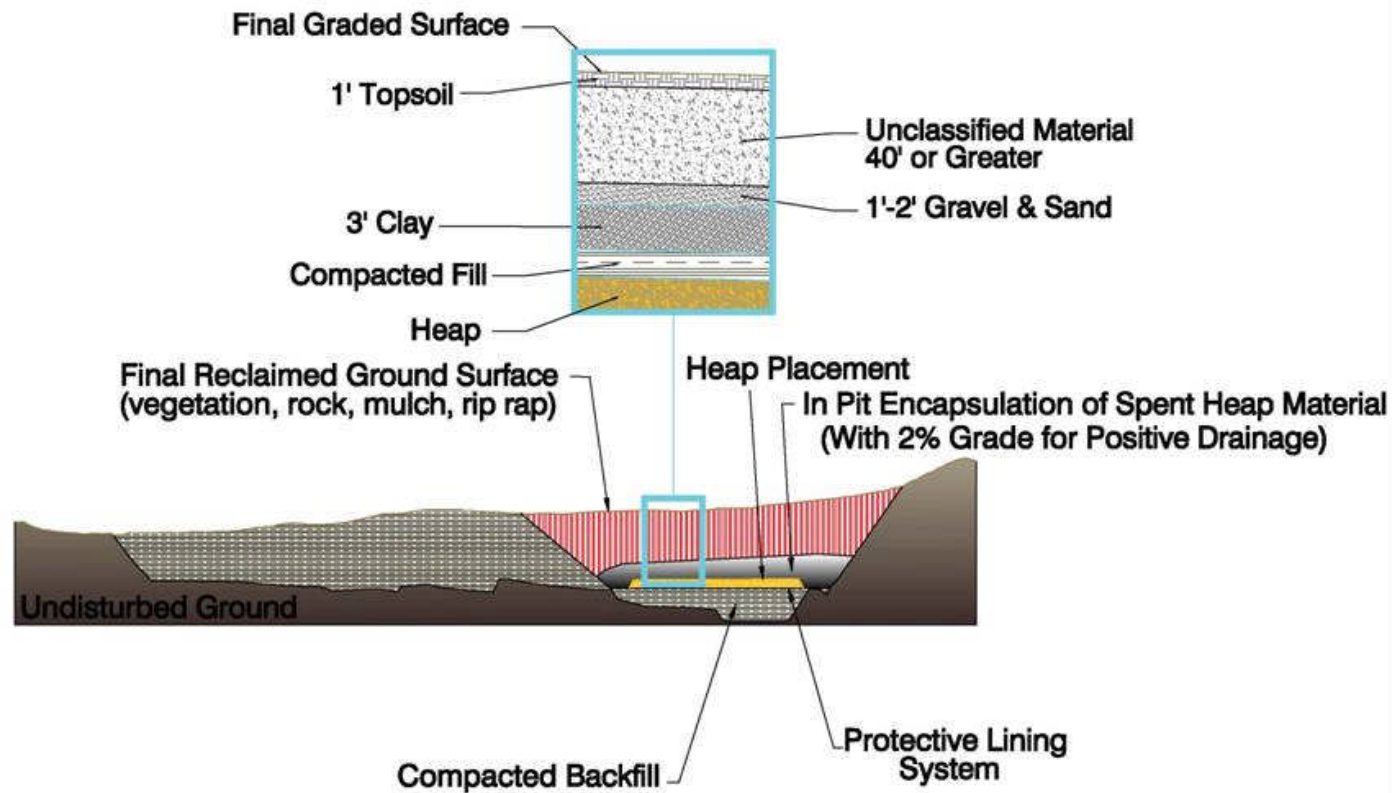






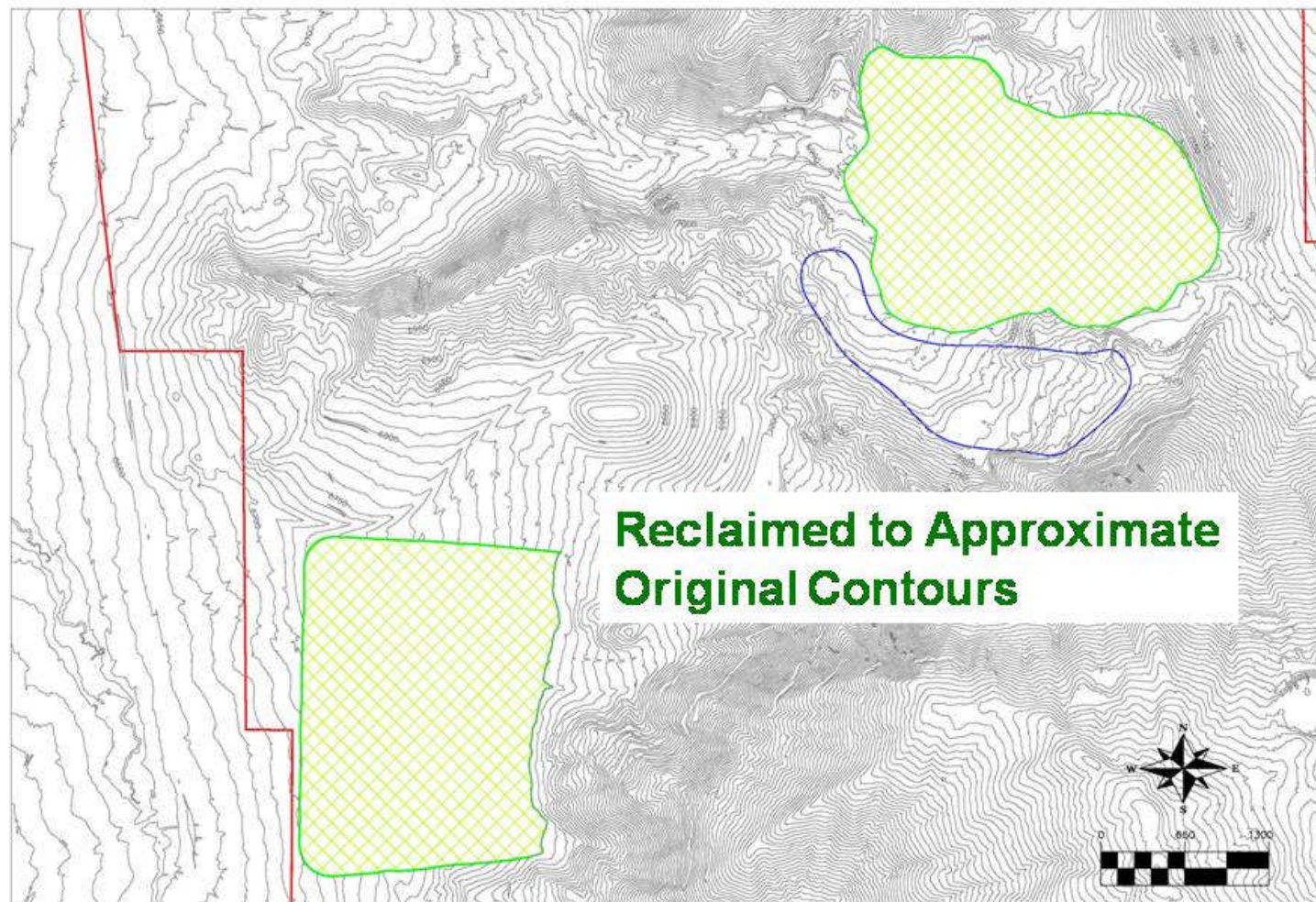
CROSS SECTION
HEAP LINER SYSTEM DETAIL

In Pit Heap Reclamation Deep Burial





Final Reclamation





Conclusion



Summary

- Diversified asset portfolio
 - Canada & USA
- U-mining friendly jurisdictions
 - Saskatchewan & Wyoming
- Pipe line of projects
 - Exploration to development
 - Potential near-term production
- Strategic partners
 - Jogmec & Mega Uranium



Summary

- Treasury
 - \$5.75 M (as of January 31/10)
- Uranium expertise
 - Domestic & international
- Strong market fundamentals
 - Demand > Supply



Path Forward

- Sheep Mountain Uranium Project
 - Conventional extraction & recovery methods
 - Low technical risk
 - Robust economics
- Develop a relationship with NRC
- Seek guidance for preparation of a high quality application
- Meet accepted criteria for NRC source license



Contact Information

CORPORATE OFFICE

Suite 100 – 2100 Airport Drive
Saskatoon, Saskatchewan, Canada
S7L 6M6

306.651.2405 (office)

306.651.5105 (fax)

www.titanuranium.com

PRESIDENT & CEO

Brian Reilly

306.651.2405 ext. 231

breilly@titanuranium.com

INVESTOR RELATIONS

604.925.1810 ext 237

ir@titanuranium.com



The End