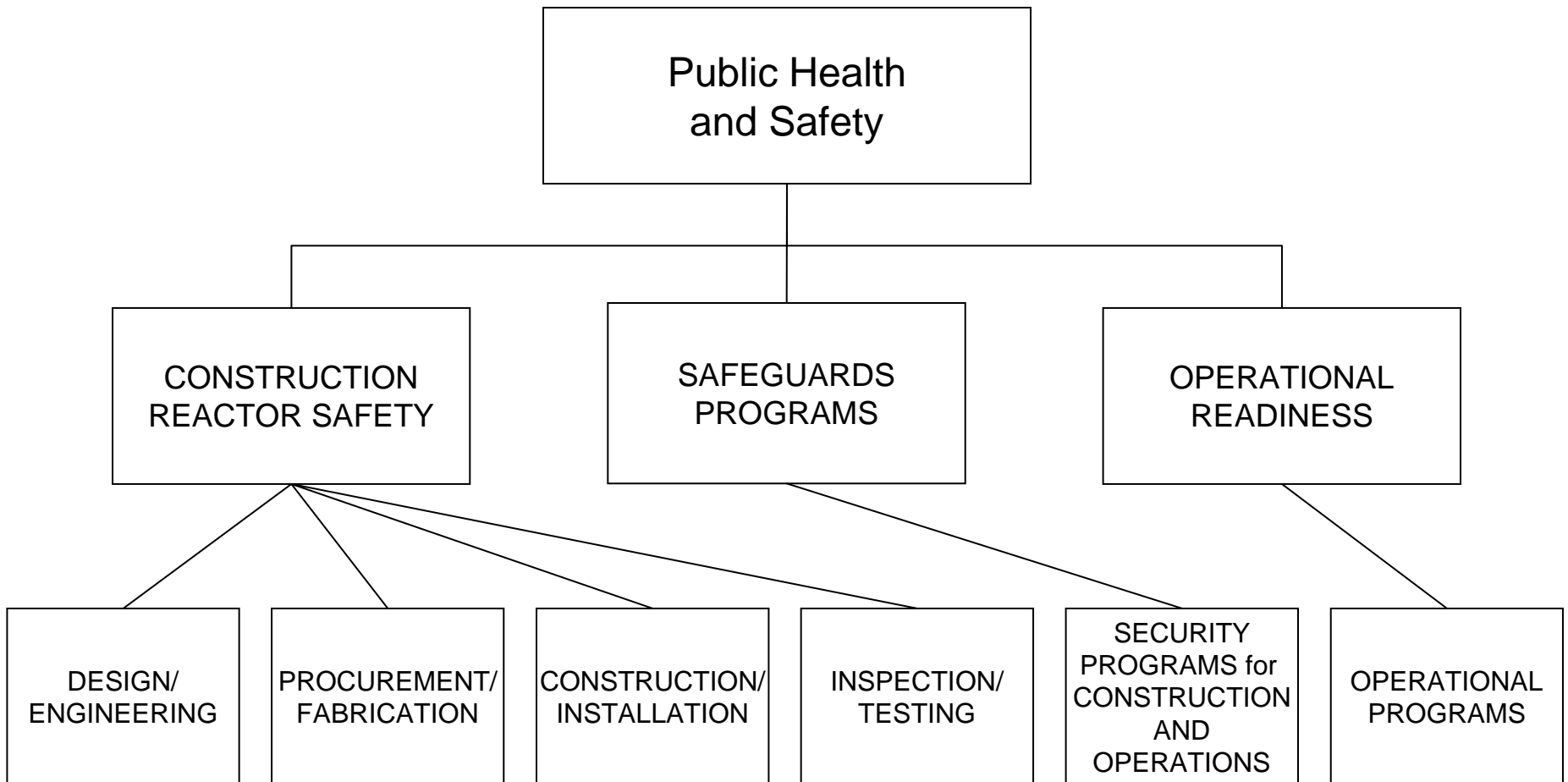


CONSTRUCTION REACTOR OVERSIGHT PROCESS REGULATORY FRAMEWORK



**DESIGN/ENGINEERING
OBJECTIVE AND ATTRIBUTES**

To independently assess the licensee's methods to
(1) develop and implement detailed design and
construction drawings and procedures; and (2)
implement a design change process

**DESIGN
CONTROL**

**PROCEDURE/
DOCUMENT
QUALITY**

CORNERSTONE

DESIGN/
ENGINEERING

ATTRIBUTES

DESIGN
CONTROL

PROCEDURE/
DOCUMENT
QUALITY

AREAS TO
MEASURE

ITAAC

Site-specific
Design

Design
Implementation

Design Changes

Applicable
Criteria from
Appendix B

**PROCUREMENT/FABRICATION
OBJECTIVE AND ATTRIBUTES**

To independently assess the licensee's methods to
(1) procure material, equipment and services, and (2)
control materials, parts, and components during
fabrication

**PROCESS
CONTROL**

**MATERIAL
CONTROL**

**PROCEDURE
QUALITY**

CORNERSTONE

PROCUREMENT/
FABRICATION

ATTRIBUTES

PROCESS
CONTROL

MATERIAL
CONTROL

PROCEDURE
QUALITY

MEASURE
TO

ITAAC

Receipt
Inspection

Commercial
Grade
Dedication

AREAS

Reports
Required by
Regulations

Licensee's
Evaluation of
Suppliers

Applicable
Criteria from
Appendix B

Maintenance
and Storage
of SSCs

**CONSTRUCTION/INSTALLATION
OBJECTIVE AND ATTRIBUTES**

To independently assess the licensee's programs and processes developed and implemented to ensure the construction and installation of facilities and structures, systems, and components in accordance with the design

**PROCESS
CONTROL**

**MATERIAL
CONTROL**

**PROCEDURE
QUALITY**

CORNERSTONE

CONSTRUCTION/
INSTALLATION

ATTRIBUTES

PROCESS
CONTROL

MATERIAL
CONTROL

PROCEDURE
QUALITY

MEASURE

ITAAC

Civil/
Structural

Mechanical

Electrical

TO

AREAS

Applicable
Criteria from
Appendix B

Welding

Maintenance
and Storage
of SSCs

Reports
Required by
Regulations

**INSPECTION/TESTING
OBJECTIVE AND ATTRIBUTES**

To independently assess the licensee's programs and processes developed and implemented to inspect and test programs, facilities, and structures, systems, and components.

**PROCESS
CONTROL**

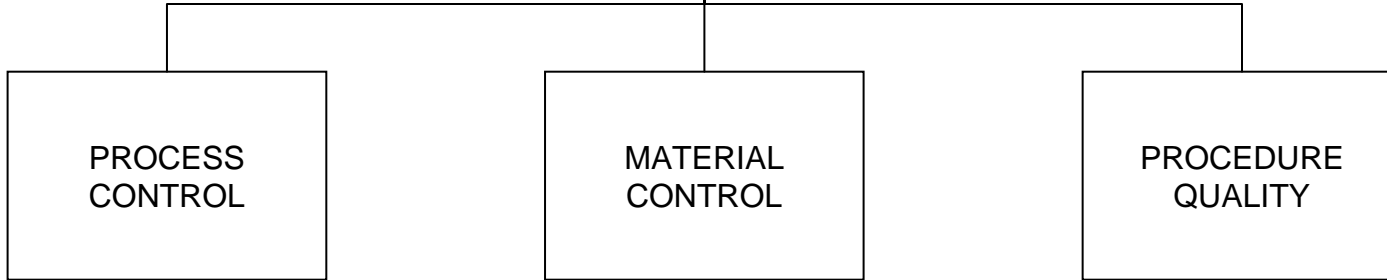
**MATERIAL
CONTROL**

**PROCEDURE
QUALITY**

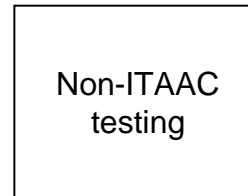
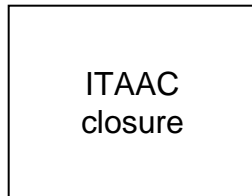
CORNERSTONE



ATTRIBUTES

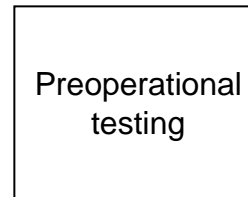
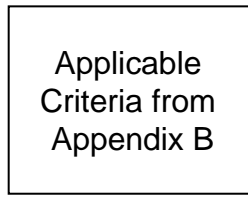


MEASURE



TO

AREAS



OPERATIONAL PROGRAMS
OBJECTIVE AND ATTRIBUTES

To independently assess the licensee's
capability to safely operate the facility

Program
Effectiveness

Training and
Qualifications

CORNERSTONE

**OPERATIONAL
PROGRAMS**

ATTRIBUTE

**PROGRAM
EFFECTIVENESS**

TO MEASURE

**Radiation
Protection**

**Process and
Effluent
Monitoring**

**Emergency
Preparedness**

**Quality
Assurance
(Operations)**

Fire Protection

**Preservice
testing**

**Preservice
inspection**

**Inservice
Inspection**

**Inservice
Testing**

**Environmental
Qualification**

AREAS

**Containment
Leak Rate
Testing**

**Reactor
Vessel Material
Surveillance**

**Maintenance
Rule**

**Motor
Operated
Valves**

**Operational
Readiness**

CORNERSTONE

**OPERATIONAL
PROGRAMS**

ATTRIBUTE

**TRAINING
AND
QUALIFICATIONS**

MEASURE

**REACTOR
OPERATOR
TRAINING**

**REACTOR
OPERATOR
REQUALIFICATION**

**NON-LICENSED
STAFF TRAINING**

AREAS TO



SECURITY PROGRAMS FOR CONSTRUCTION AND OPERATIONS OBJECTIVES AND ATTRIBUTES

To provide assurance that (1) construction activities are not adversely impacted due to Fitness-for-Duty issues; and (2) the licensee's security programs use a defense-in-depth approach and can protect against the design basis threat of radiological sabotage from internal and external threats.

SECURITY
CONSTRUCTION
PROGRAM

SECURITY
OPERATIONAL
PROGRAM

ACCESS
AUTHORIZATION

PROTECTION
OF
SAFEGUARDS
INFORMATION

ACCESS
CONTROL

PHYSICAL
PROTECTION

CONTINGENCY
RESPONSE

MATERIAL
CONTROL AND
ACCOUNTING

CYBER
SECURITY

CORNERSTONE

SECURITY
CONSTRUCTION
PROGRAM

Add New Security
Rule for
Construction When
Issued

ATTRIBUTE

Access Authorization

Protection of
Safeguards
Information

AREAS TO MEASURE

Fitness for Duty

Access to SGI

Designation and
Storage

Processing,
Reproducing, and
Transmitting

Removal and
Destruction

CORNERSTONE

SECURITY
OPERATIONAL
PROGRAM

ATTRIBUTES

Physical
Protection
System

Access
Authorization

Access
Control

Response to
Contingency
Events

Material Control
and
Accounting

Cyber
Security

Protection of
Safeguards
Information

AREAS TO MEASURE

Personnel Screening;
Behavior
Observations; Fitness
for Duty

Protective
Strategy
Evaluation

Protection of Systems
and Networks; Cyber
Security Program; Plan
and Procedures

Protected Areas;
Vital Areas
(barriers, alarms,
assessment)

Search;
Identification

Records;
Reports;
Procedures;
Inventory;

Access to SGI;
Designation and
Storage; Processing,
Reproducing and
Transmitting; Removal
and Destruction