

Figure 2.3.1-1 Victoria County Station Location Map

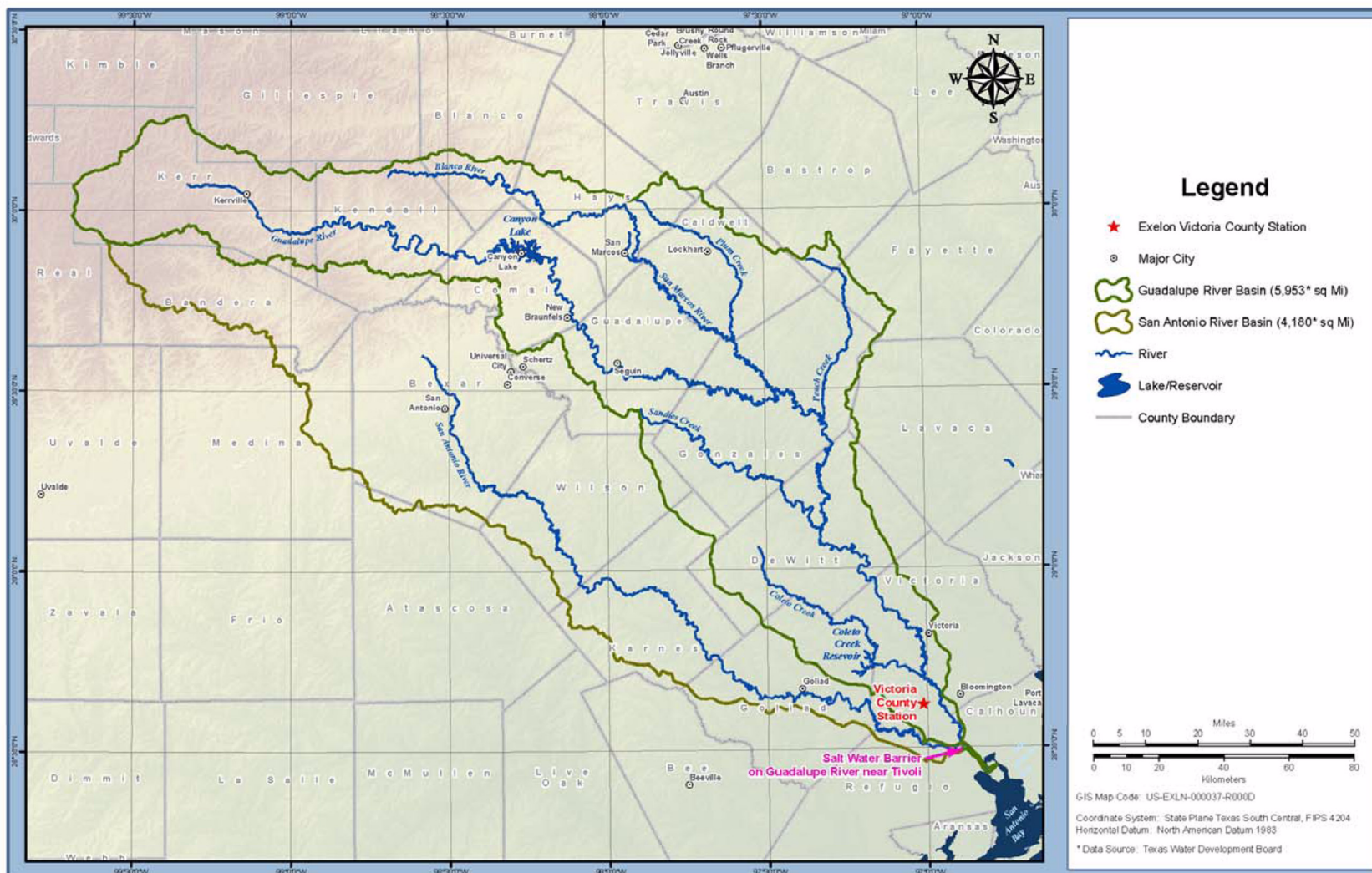


Figure 2.3.1-2 Guadalupe and San Antonio River Basin Watersheds

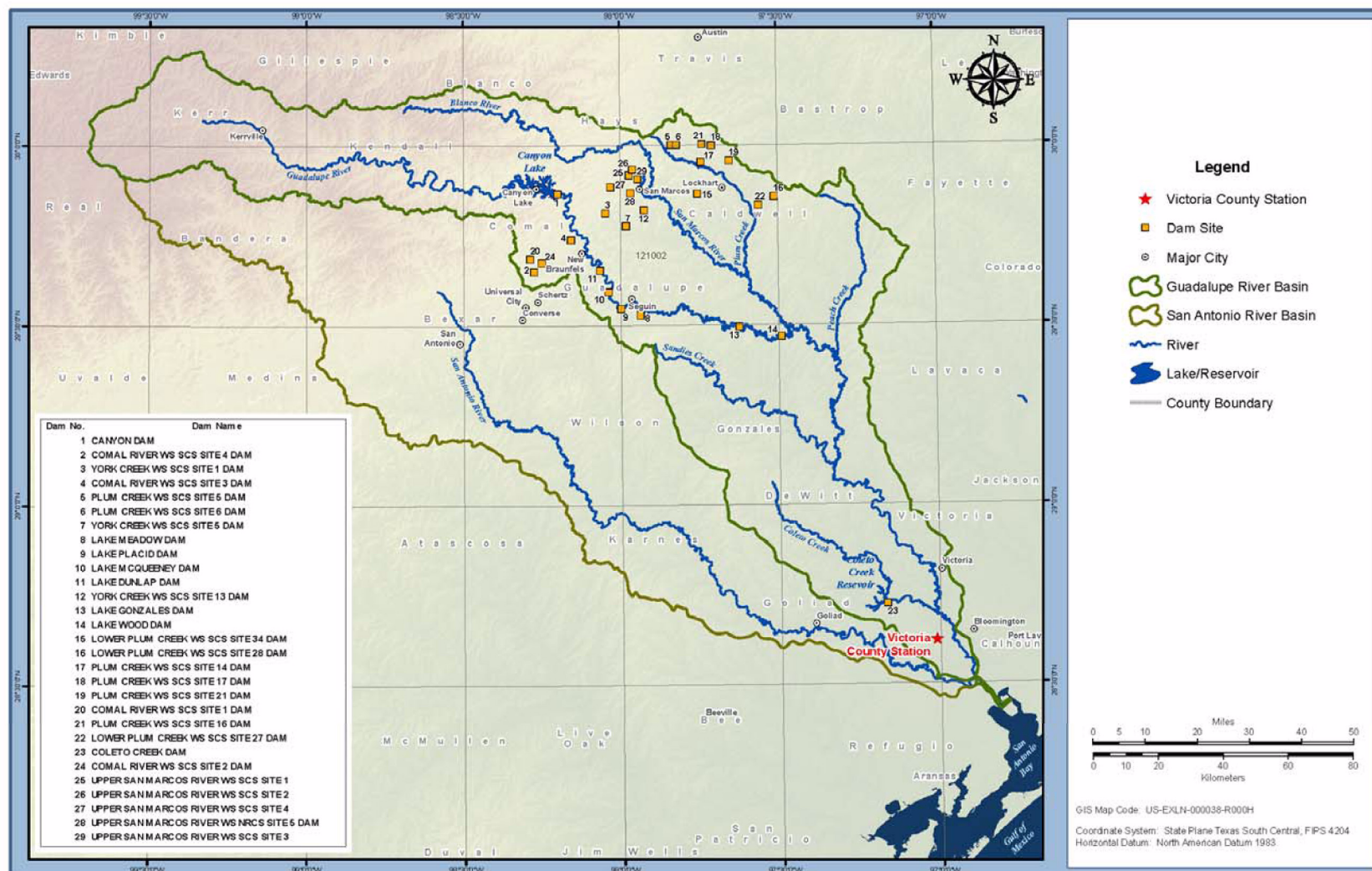


Figure 2.3.1-3 Guadalupe River Basin Dams

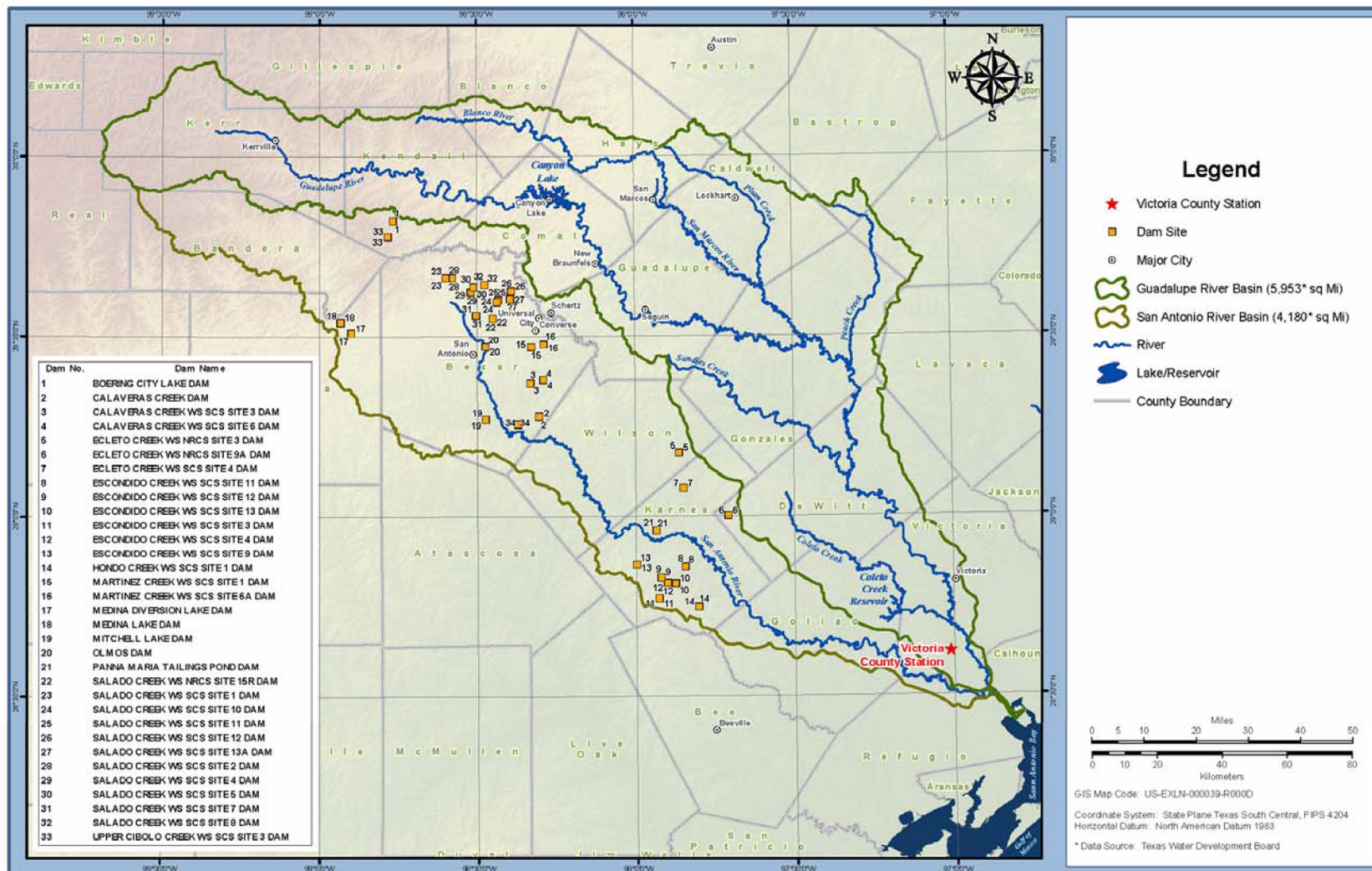


Figure 2.3.1-4 San Antonio River Basin Dams

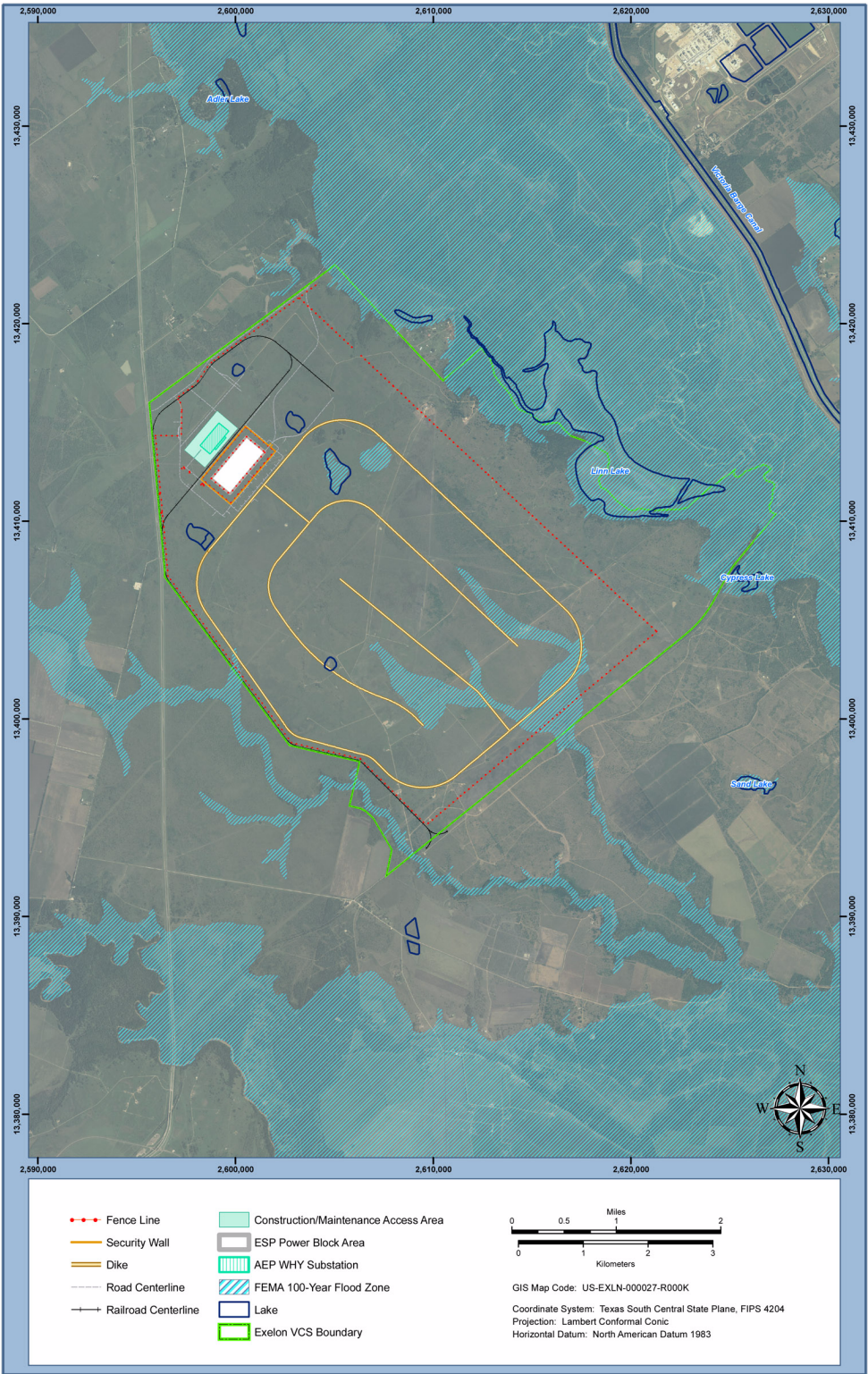


Figure 2.3.1-5 VCS Site Floodplain Map

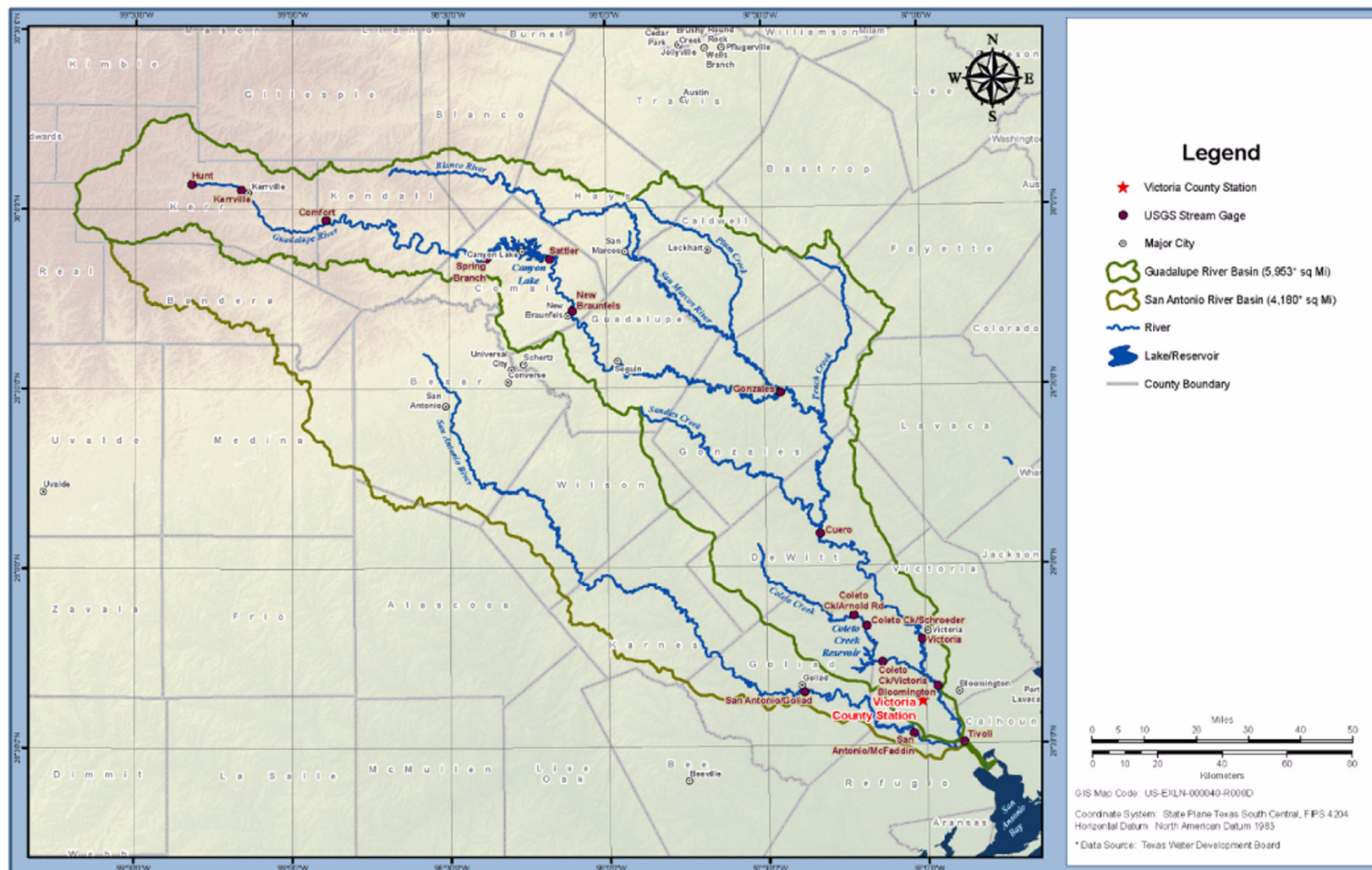


Figure 2.3.1-6 Guadalupe and San Antonio River Basins: Selected Stream Gages

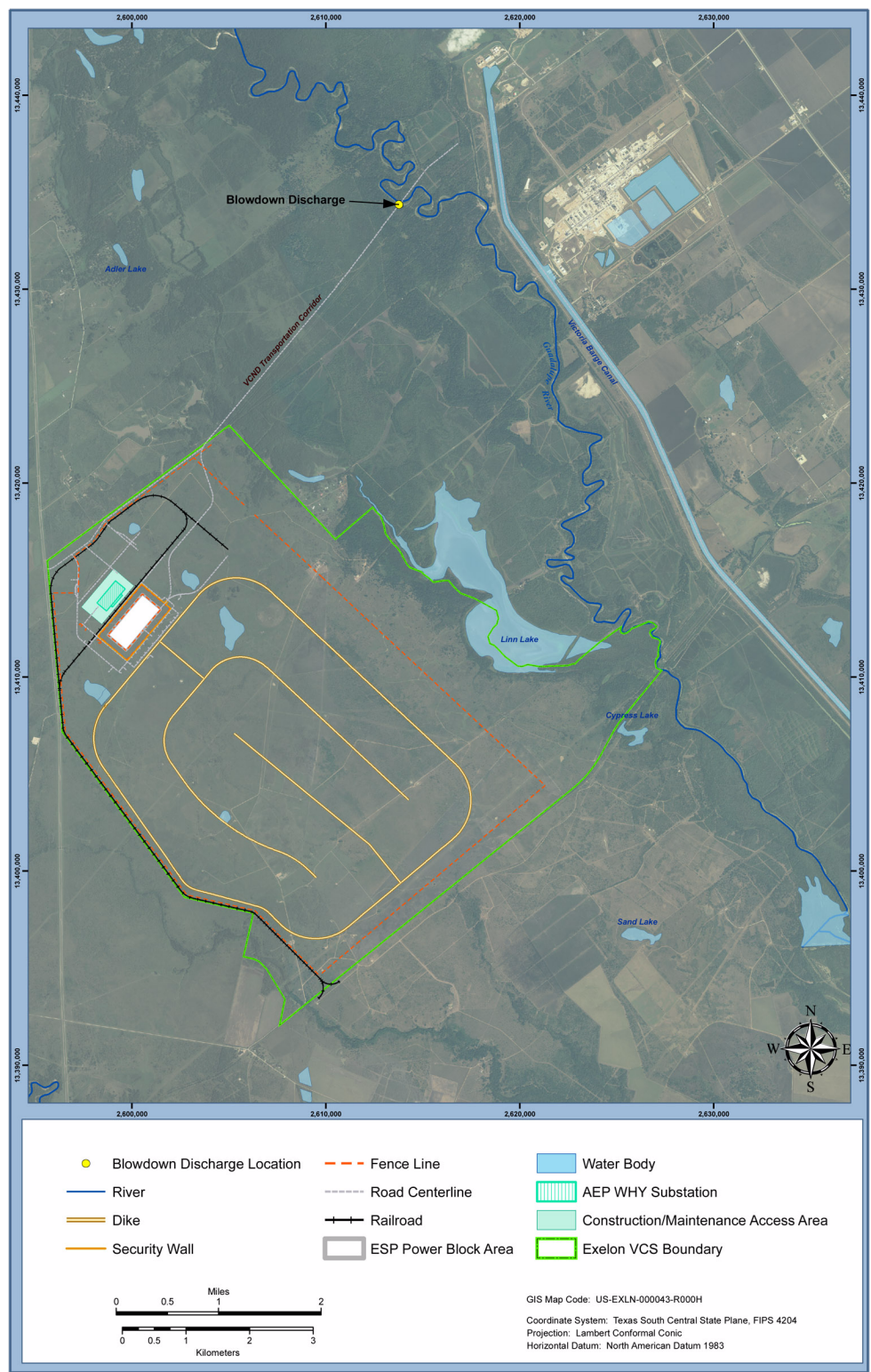


Figure 2.3.1-7 Victoria County Station Blowdown Discharge Location Map

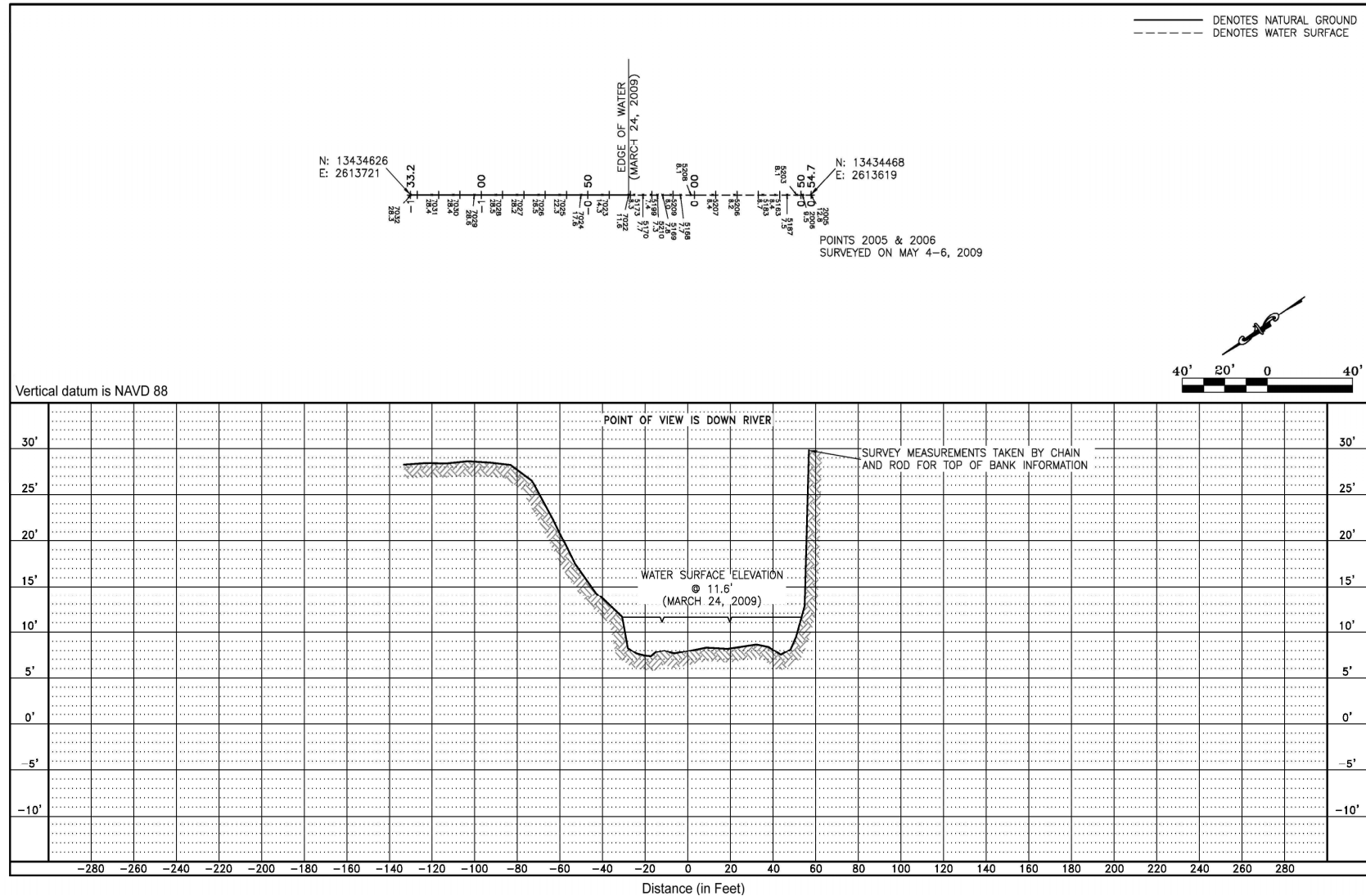


Figure 2.3.1-8 Guadalupe River Bathymetry—200 Feet Upstream of Blowdown Discharge Location

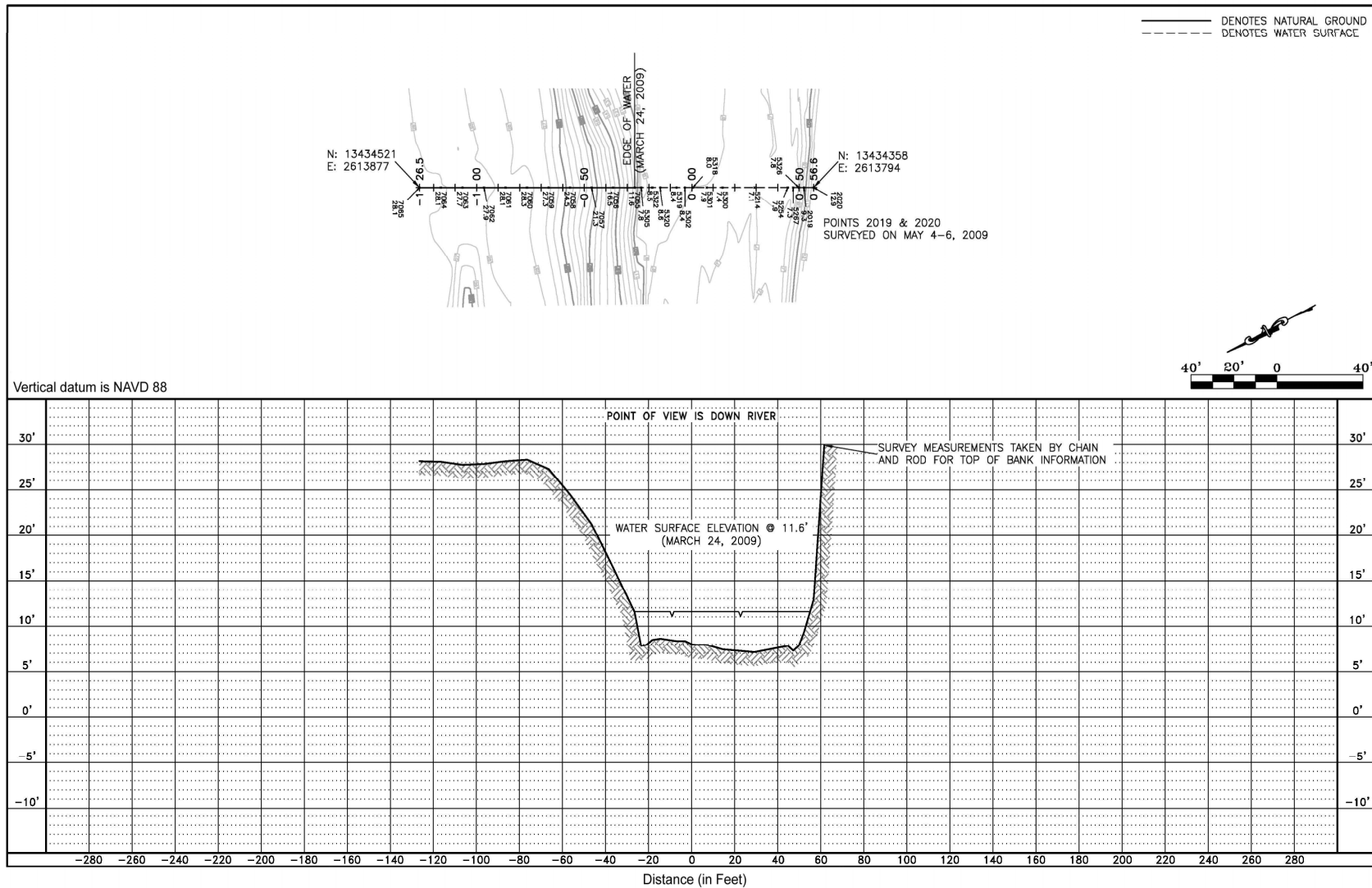


Figure 2.3.1-9 Guadalupe River Bathymetry—Near Blowdown Discharge Location

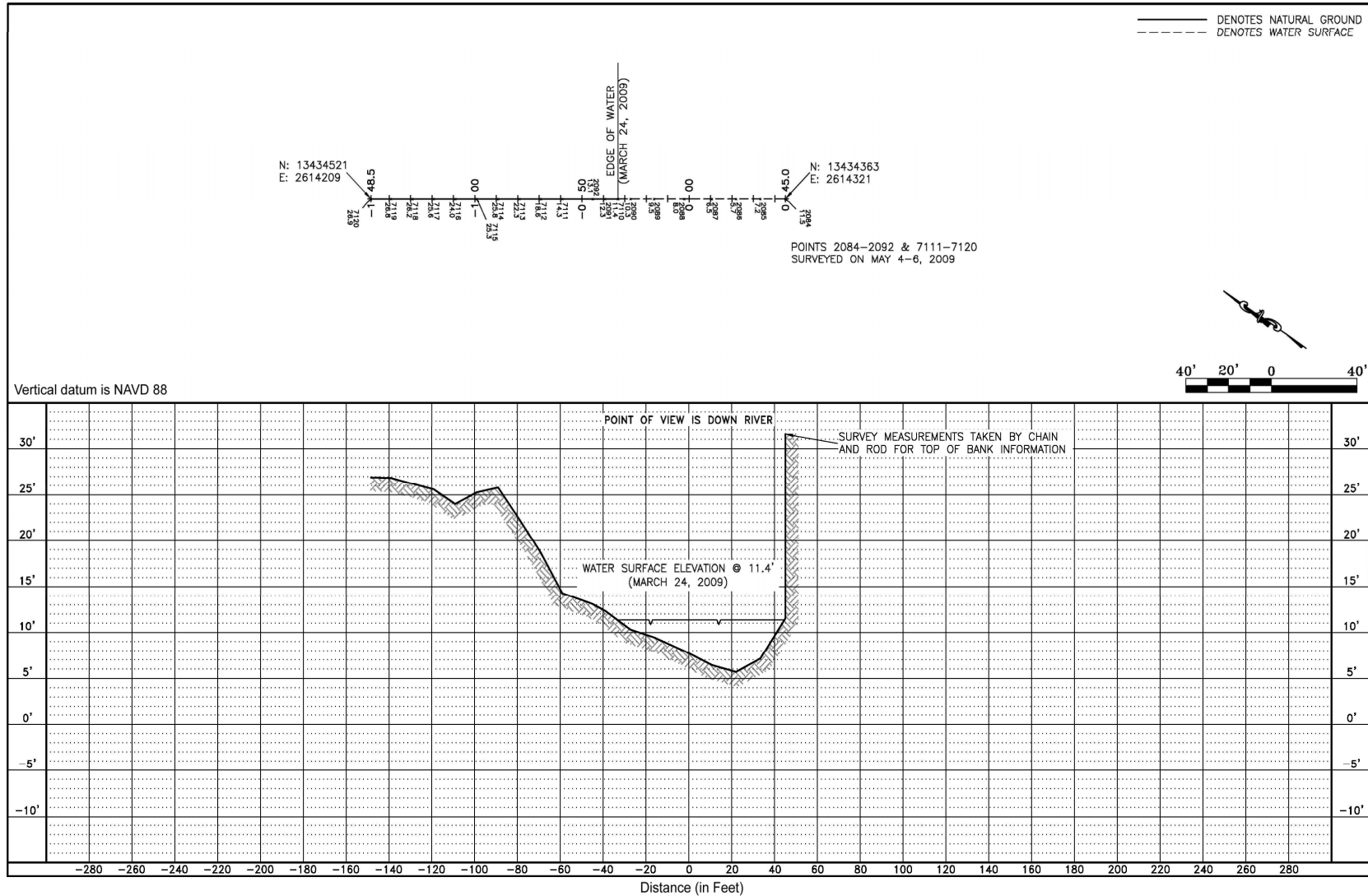


Figure 2.3.1-10 Guadalupe River Bathymetry – 500 Feet Downstream of Blowdown Discharge Location

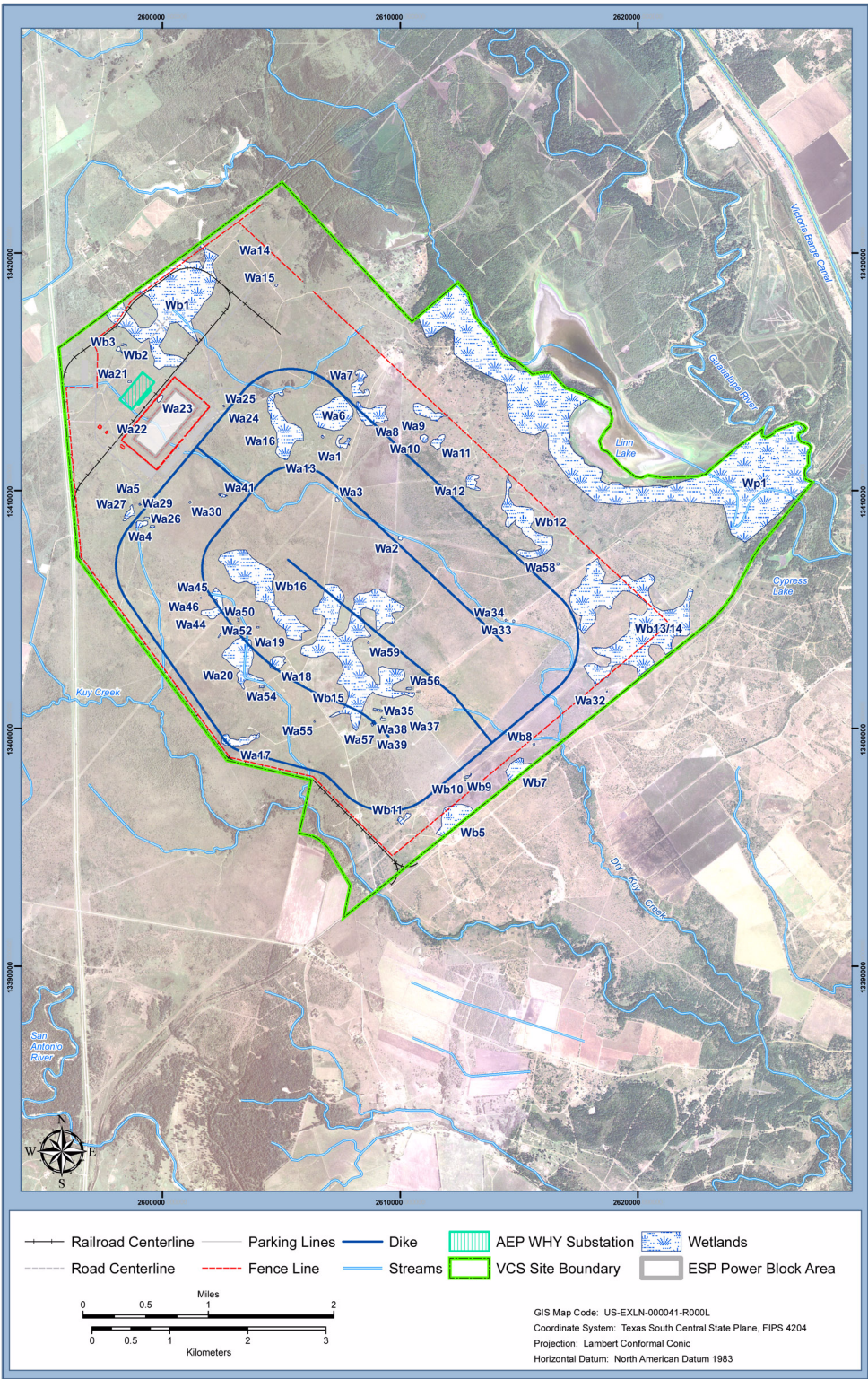


Figure 2.3.1-11 Existing Streams and Wetlands

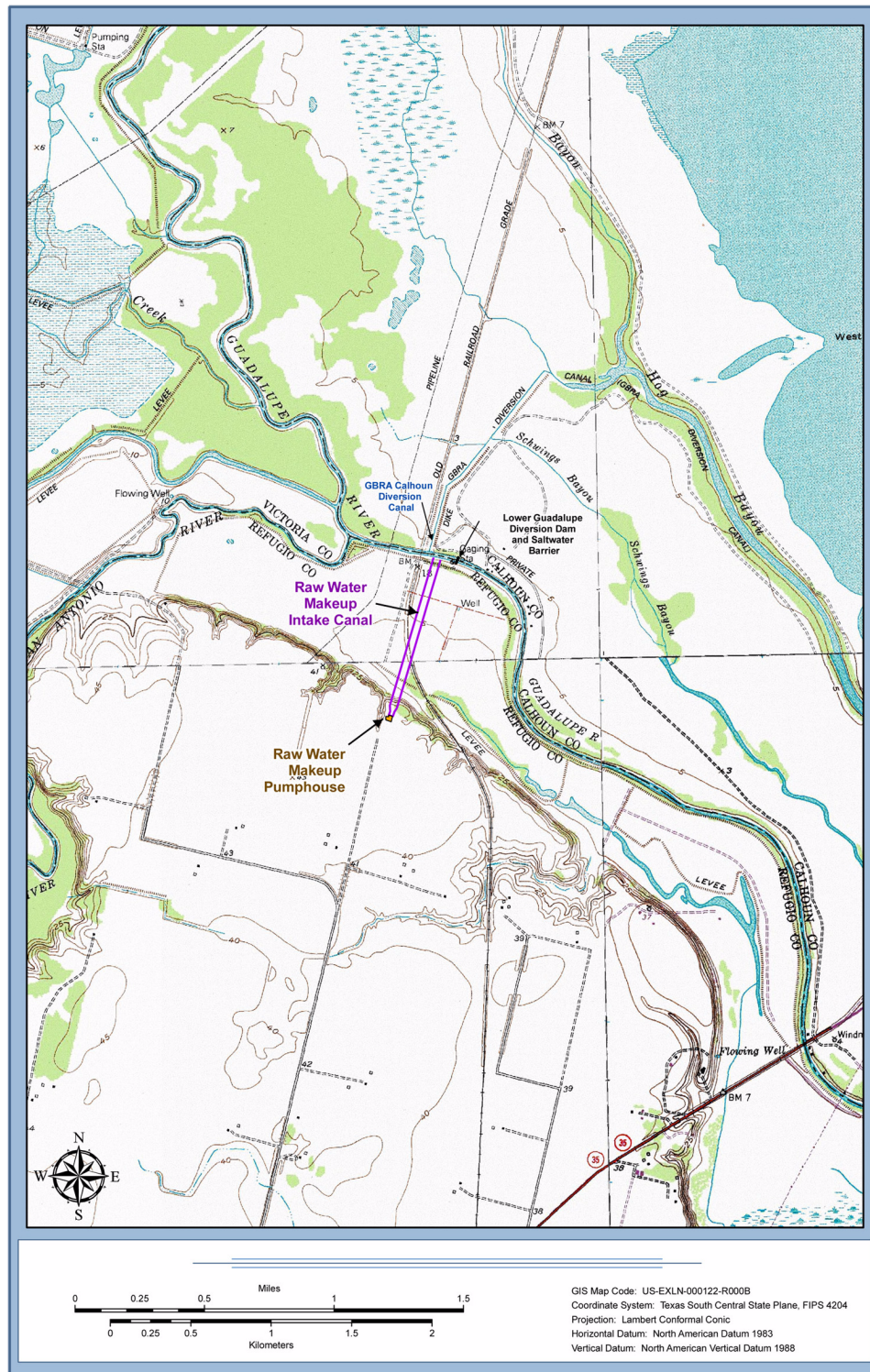


Figure 2.3.1-12 Victoria County Station, Raw Water Makeup (RWMU) System Intake Location Map

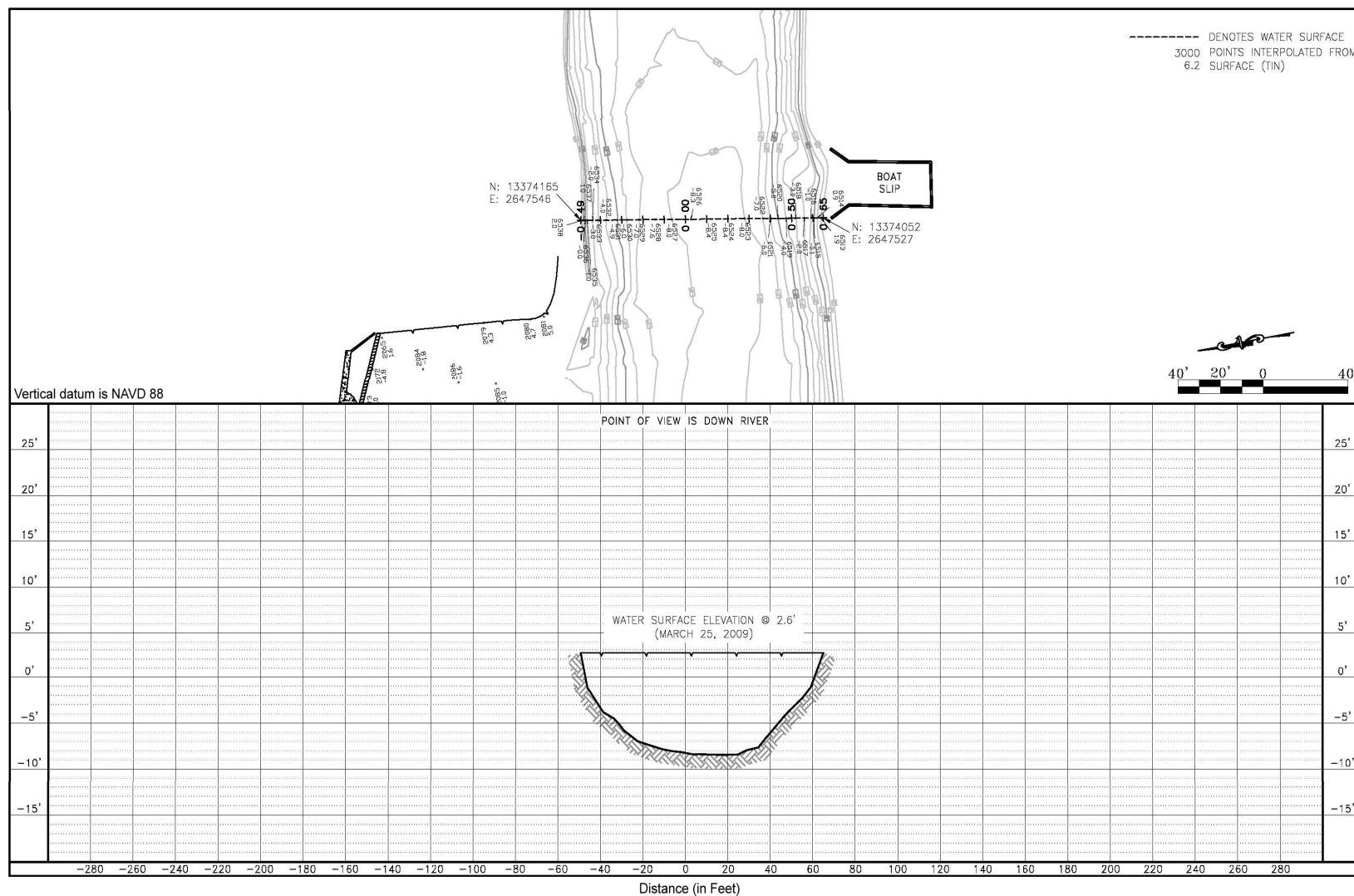


Figure 2.3.1-13 Guadalupe River Bathymetry — Near Raw Water Makeup System Intake Channel Location