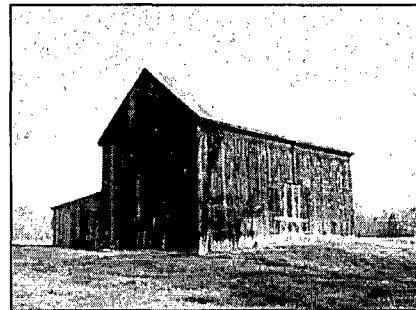


Draft Technical Report
Phase I Cultural Resources Investigations and
Phase II National Register Site Evaluations

Calvert Cliffs Nuclear Power Plant
Calvert County, Maryland

Prepared for:

UniStar Nuclear Development, LLC



Prepared by:

Barbara A. Munford, M.A., Lori A. Frye, M.A.
and Matthew G. Hyland, Ph. D.

GAI Consultants Inc.

385 East Waterfront Drive
Homestead, Pennsylvania



GAI Project No. C080212.00

August 2008



UniStar
NUCLEAR

Draft Technical Report
Phase I Cultural Resources Investigations and
Phase II National Register Site Evaluations

Calvert Cliffs Nuclear Power Plant
Calvert County, Maryland

Prepared for:
UniStar Nuclear Development, LLC

Prepared by:

Barbara A. Munford, M.A., Principal Investigator

Lori A. Frye, M.A. Co-Principal Investigator and
Matthew G. Hyland, Ph.D., Senior Architectural Historian

GAI Consultants Inc.
385 East Waterfront Drive
Homestead, Pennsylvania

GAI Project No. C080212.00

August 2008

Abstract

Between October 2006 and May 2008, GAI Consultants, Inc. (GAI) conducted Phase I Cultural Resources Survey and Phase II National Register Site Evaluations of the Calvert Cliffs Nuclear Power Plant (CCNPP), Calvert County, Maryland, on behalf of UniStar Nuclear Development, LLC (UniStar Nuclear), a subsidiary of Constellation Energy, under contracts to TetraTech NUS (Phase I) and MACTEC (Phase II). The project area encompasses an approximately 683-acre (276-hectare) parcel situated primarily south and west of the existing CCNPP facility. UniStar Nuclear proposes construction of a new nuclear power generating unit in this locality. Additional proposed project impacts include construction of ancillary facilities, temporary construction laydowns, and wetland and stream mitigation.

GAI's Phase I investigations included background research, a Phase Ia geomorphological and archaeological reconnaissance, a Phase Ib archaeological field survey and an architectural survey. The Phase I study identified archaeological sites and architectural resources over 50 years of age within the project Area of Potential Effect (APE) and assessed their potential for listing in the National Register of Historic Places (NRHP). Phase II investigations were conducted of potentially-eligible archaeological sites that were subject to project impacts, in order to conclusively determine their NRHP eligibility.

The APE for Phase I and II archaeological investigations consisted of the 683-acre project footprint. For architectural resources the APE was generally defined as extending 305 meters (1000 feet) beyond the project footprint. Within wetland and stream mitigation areas, due to the low-profile nature of proposed impacts the APE for architectural resources extended 152 meters (500 feet) beyond the project boundaries.

GAI's Phase I archaeological survey of the CCNPP project area identified 16 archaeological sites and 25 Isolated Finds. The 16 sites include 15 historic-period sites and one prehistoric site. The historic-period sites range in age from the mid-nineteenth through twentieth centuries. They consist of four domestic sites, one domestic site/artifact scatter, seven artifact scatters/field scatters, one artifact scatter with foundations, one refuse dump with an outbuilding, and one refuse dump. The single prehistoric site is an undated lithic scatter. Based on the results of Phase I survey and review by the Maryland Historic Trust (MHT), four of the 16 identified sites were recommended as potentially eligible for listing on the NRHP, under Criterion D.

At the request of UniStar Nuclear, GAI conducted Phase II testing at these four potentially-eligible historic archaeological sites (18Cv474, 48CV480, 18Cv481 and 18Cv482). Based on the results of this study, GAI recommends that one of the four sites—18Cv474—is eligible to the NRHP, under Criterion D. Site 18Cv474 is a mid nineteenth to early twentieth-century domestic site containing the remains of a stone foundation as well as diagnostic artifacts and features. GAI recommends that UniStar Nuclear either avoid impacts to Site 18Cv474 during project construction or perform Phase III data recovery excavations to resolve adverse effects from project development.

GAI's architectural survey documented five architectural and historic properties in the project viewshed. These include two farmsteads (Parran's Park/CT-58 and Preston's Cliffs/CT-59), portions of an abandoned railroad bed (the previously-recorded, NRHP-eligible Baltimore and Drum Point Railroad/CT-1295), one recreational camp (Camp Conoy/CT-1312), and the existing Calvert Cliffs Nuclear Power Plant (CT-154). The CCNPP facility (CT-154) is recommended as Not Eligible to the NRHP. The other four resources (CT-58, CT-59, CT-1295 and CT-1312) are recommended as eligible for listing on the NRHP. Once project design has been finalized, GAI will conduct a formal assessment of project effects and present results in a separate Criteria of Effects Evaluation Report.

Table of Contents

Chapter 1. Introduction and Project Overview	1
Project Summary	1
Area of Potential Effect	5
Summary of Results	6
Phase Ia Cultural Resources Investigation	6
Phase Ib Cultural Resources Investigation	6
Phase II National Register Evaluations	10
Regulatory Guidelines	10
Project Staff and Acknowledgements	10
Chapter 2. Environmental Setting	13
Physiography	13
Geology	13
Geomorphology, Drainage, and Soils	13
Prehistoric Toolstone Resources	14
Climate	17
Paleoenvironment	17
Chapter 3. Culture History	19
Native American Prehistory	19
Paleoindian (Before 8000 B.C.)	19
Early Archaic (8000-6000 B.C.)	20
Middle Archaic (6000-4000 B.C.)	20
Late Archaic (4000-1000 B. C.)	21
Early Woodland (1000 B.C.-200 A.D.)	21
Middle Woodland (A.D. 200-900)	22
Late Woodland (A.D. 900-1600)	22
Euroamerican History	23
Contact and Settlement Period (1570 to 1750)	23
Rural Agrarian Intensification and Agricultural-Industrial Transition (1750 to 1870)	29
Industrial/Urban Dominance (1870 to 1930)	32
Modern Period (1930 to Present)	32
Conclusion	33
Chapter 4. Background Research and Archaeological Potential	35
Site Files and Literature Review	35
Archaeological Sites	35
Architectural Resources	38
Cultural Resource Surveys	39
Historic Map Research	40
Prehistoric Archaeological Potential	51
Historic Archaeological Potential	51
Chapter 5. Phase Ia Archaeological and Geomorphological Reconnaissance	53
Introduction	53
Geomorphological Reconnaissance	53
Goals and Methods	53
Results	53

Draft Technical Report: CCNPP Phase I and Phase II Cultural Resources Investigations

Archaeological Reconnaissance	55
Goals and Methods	55
Results	56
Summary of Phase Ia Results	57
Chapter 6. Phase IB Archaeological Survey	59
Objectives	59
Field Methods	59
Overview of Phase Ib Field Results	61
Chapter 7. Phase II National Register Evaluations: Research Design and Methods	67
Phase II Research Design	67
Phase II Methods	67
Site-Specific Archival Research	68
Phase II Field Methods	68
Overview of Phase II Field Results	69
Chapter 8. Analytical Methods	71
Introduction	71
Laboratory Processing	71
Methods of Historic/Modern Artifact Analysis	71
Methods of Prehistoric Lithic Analysis	72
Methods of Flotation Processing	73
Chapter 9. Site 18Cv474 (GAI Site 1)	75
Site Setting	75
Phase Ib Investigations	75
Phase II Methods	76
Archival research	76
Phase II Fieldwork	79
Phase II STP Excavations	79
Phase II Test Units	80
Phase II Soils and Geomorphology	87
Phase II Features	87
Structure Foundation (Feature 1)	88
Structure Addition Foundation (Features 1a and 1b)	90
Builder's Trench (Features 2a, 2b, and 2c)	90
Feature 3	91
Feature 4	91
Phase I/II Artifact Analysis	91
Pattern Analysis	94
Dating Analysis	95
Summary and Evaluation	96
Chapter 10. Site 18Cv475 (Site 2)	133
Chapter 11. Site 18Cv476 (Site 3)	141
Chapter 12. Site 18Cv477 (Site 4)	149
Chapter 13. Site 18Cv478 (Site 5)	161
Chapter 14. Site 18Cv479 (Site 6)	169

Chapter 15. Site 18Cv480 (GAI Site 7)	177
Site Setting	177
Phase Ib Investigations	178
Phase Ib Artifact Analysis	179
Phase II Methods	180
Archival Research	180
Phase II Fieldwork	184
Phase II Soils and Geomorphology	196
Phase II Features	196
Feature Summary	207
Summary and Evaluation	212
Chapter 16. Site 18Cv481 (GAI Site 8)	255
Archival Research	256
Phase II STP Excavations	257
Phase II Test Unit Excavations	257
Phase I/II Artifact Analysis	259
Summary and Evaluation	262
Chapter 17. Site 18Cv482 (GAI Site 9)	283
Site Setting	283
Phase Ib Investigations	283
Artifact Analysis	283
Phase II Introduction/Methods	284
Phase II Archival Research	284
Phase II STP Excavations	286
Phase II Test Units	286
Cluster 2: Test Units 3 and 4	289
Yard Area - Test Units 2, 5, 6, and 7	290
Phase II Soils and Geomorphology	291
Phase II Features	292
Feature 1/3/3a	292
Feature 5	294
Phase I/II Artifact Analysis	295
Pattern Analysis	295
Dating Analysis	297
Summary and Evaluation	298
Chapter 18. Site 18Cv483 (Site 10)	331
Chapter 19. Site 18Cv484 (Site 11)	343
Chapter 20. Site 18Cv485 (Site 12)	351
Chapter 21. Site 18Cv486 (Site 13)	359
Chapter 22. Site 18Cv487 (Site 14)	367
Chapter 23. Site 18Cv489 (Site 15)	375
Chapter 24. Site 18Cv490 (Site 16)	383
Chapter 25. Architectural and Historical Survey391_Methods	391
Area of Potential Effect	391

Draft Technical Report: CCNPP Phase I and Phase II Cultural Resources Investigations

Literature and Background Research	391
Field Survey Results	392
Chapter 26. Summary and Recommendations.....	427
Project Summary.....	427
Archeological Sites: Summary and Recommendations.....	427
Historic Period Sites.....	429
Prehistoric Sites	431
Architectural and Historical Resources: Summary and Recommendations	431
Assessment of Effects.....	432
References Cited.....	433
Appendix A	Correspondence
Appendix B	Phase I and Phase II Workplans
Appendix C	Qualifications of Key Personnel
Appendix D	Artifact Catalogs
Appendix E	Maryland Archeological Site Survey: Historic Data Form-Updates
Appendix F	Phase II Test Unit Soil Profile Descriptions
Appendix G	Maryland Historic Trust Determination of Eligibility Form-Update
List of Figures	
Figure 1-1.	Project Area 3
Figure 1-2.	Project Area Showing Phase Ib Test Areas and Identified Cultural Resources 7
Figure 2-1.	Project Location in Relation to Maryland Archeological Research Units..... 15
Figure 3-1	Selection from Virginia, Discovered and Described by Captayn John Smith, 1608. Geography and Map Division, Library of Congress 24
Figure 3-2	Selection from John Ogilby's Nova Terra-Mariae Tabula, 1635. Maryland State Archives, W.T. Snyder Map Collection 25
Figure 3-3	A Susquehannock, Selection from Virginia, Discovered and Described by Captayn John Smith, 1608. Geography and Map Division, Library of Congress 25
Figure 3-4	A Selection from Augustine Herman's Virginia and Maryland, 1671 [1673]. Library of Congress, MSA SC 5339-1-172. The project area is located in Calvert County. 27
Figure 3-5	Maryland State House, Southeast Elevation, HABS Survey MD-245, National Park Service, Dietmar Opitz, Alan Halvorzen, and Andrew Wenchel, Maryland State House Project 1986, Library of Congress. 29
Figure 3-6	Selection from William Tatham, An Historical and Practical Essay on the Culture and Commerce of Tobacco, London, 1800, NW0029, Special Collections Department, University of Virginia Library, Charlottesville. 30
Figure 3-7	Commodore Joshua Barney, c. 1830 engraving by Cephas G. Childs and Thomas Gimbrede for <i>A Biographical Memoir of the Late Commodore Joshua Barney</i> , by Mary Barney..... 31

Figure 4-1.	Project Area and Vicinity, 1794.....	41
Figure 4-2.	Project Area and Vicinity, 1857.....	43
Figure 4-3.	Project Area and Vicinity, 1861-1862.....	45
Figure 4-4.	Project Area and Vicinity, 1885.....	47
Figure 4-5.	Project Area and Vicinity, 1905.....	49
Figure 9-1.	Site 18Cv474 Location.....	97
Figure 9-2.	Site 18Cv474, Phase Ib Testing Locations.....	99
Figure 9-3.	Site 18Cv474, Phase I Typical STP Profile.....	101
Figure 9-4.	Site 18Cv474, Vicinity in 1905.....	103
Figure 9-5.	Site 18Cv474, Vicinity in 1862.....	105
Figure 9-6.	Site 18Cv474, Vicinity in 1873.....	107
Figure 9-7.	Site 18Cv474, Phase II Testing Locations.....	109
Figure 9-8.	Site 18Cv474, Phase II STP Distribution of All Artifacts.....	111
Figure 9-9.	Site 18Cv474, Phase II STP Distribution of Architecture Artifacts (top) and Kitchen Artifacts (bottom).....	113
Figure 9-10.	Site 18Cv474, Test Units in the Structure Area.....	115
Figure 9-10.	Site 18Cv474, Test Units in the Structure Area.....	115
Figure 9-11.	Site 18Cv474, Plan View of Test Unit 1.....	117
Figure 9-12.	Site 18Cv474, Profile of Test Unit 2.....	119
Figure 9-13.	Site 18Cv474, Profile of Test Unit 4.....	121
Figure 9-14.	Site 18Cv474, Profile of Test Unit 3 (top) and Test Unit 5 (bottom).....	123
Figure 9-15.	Site 18Cv474, Profile of Test Unit 11.....	125
Figure 9-16.	Site 18Cv474, Profile of Test Unit 6.....	127
Figure 9-16.	Site 18Cv474, Profile of Test Unit 6.....	127
Figure 9-17.	Site 18Cv474, Profile of Test Unit 9.....	129
Figure 9-18.	Site 18Cv474, Chimney Remnant Profile.....	131
Figure 10-1.	Site 18Cv475 Location.....	135
Figure 10-2.	Site 18Cv475 Showing Phase Ib Testing Locations.....	137
Figure 10-3.	Site 18Cv475: Representative STP Profiles—STP S2-7 and S2-8.....	139
Figure 11-1.	Site 18Cv476 Location.....	143
Figure 11-2.	Site 18Cv476 Showing Phase Ib Testing Locations.....	145
Figure 11-3.	Site 18Cv476: Representative STP Profile—STP S3-8.....	147
Figure 12-1.	Site 18Cv477 Location.....	153
Figure 12-2.	Site 18Cv477 Showing Phase Ib Testing Locations.....	155

Draft Technical Report: CCNPP Phase I and Phase II Cultural Resources Investigations

Figure 12-3.	Site 18Cv477 Vicinity in 1905	157
Figure 12-4.	Site 18Cv477: Representative STP Profile—STP S1	159
Figure 13-1.	Site 18Cv478 Location	163
Figure 13-2.	Site 18Cv478 Showing Phase Ib Testing Locations	165
Figure 13-3.	Site 18Cv478: Representative STP Profiles—STPs S1 and B2	167
Figure 14-1	Site 18Cv479 Location	171
Figure 14-2.	Site 18Cv479 Showing Phase Ib Testing Locations	173
Figure 14-3.	Site 18Cv479: Representative STP Profile—STP M3	175
Figure 15-1.	Site 18CV480 Location	213
Figure 15-2.	Site 18CV480 Showing Phase Ib Testing Locations	215
Figure 15-3.	Site 18CV480: Representative Phase Ib Shovel Test Profiles (STPs D3, N3, and F6) Typical STP Profile	217
Figure 15-4.	Site 18CV480 and Vicinity in 1905.....	219
Figure 15-5.	Site 18CV480 and Vicinity in 1862.....	221
Figure 15-6.	Site 18CV480, Site Map Plan View.....	223
Figure 15-7.	Site 18CV480, Distribution of All Artifacts	225
Figure 15-8.	Site 18CV480 Distribution of All Artifacts in Locus 1	227
Figure 15-9.	Site 18CV480, Test Units in Locus 1	229
Figure 15-10.	Site 18CV480, Stone Wall and Midden Area Plan View	231
Figure 15-11.	Site 18CV480, Test Unit 1 and 8 South Profile	233
Figure 15-12.	Site 18CV480, Test Unit 1 East Profile	235
Figure 15-13.	Site 18CV480, Test Unit 7, West Profile	237
Figure 15-14.	Site 18CV480, Test Units 15 and 7, South Wall Profile	239
Figure 15-15.	Site 18CV480, Test Unit 4, West Profile	241
Figure 15-16.	Site 18CV480, Test Unit 14, West and North Profiles	243
Figure 15-17.	Site 18CV480, Test Unit 2, Plan View	245
Figure 15-18.	Site 18CV480, Test Unit 2, Plan View	247
Figure 15-19.	Site 18CV480, Test Units 5 and 16, Plan View.....	249
Figure 15-20.	Site 18CV480, Test Unit 13, Plan View	251
Figure 15-21.	Site 18CV480, Test Units 5 and 16, West Profile	253
Figure 16-1.	Site 18Cv481 Location	263
Figure 16-2.	Site 18Cv481, Phase Ib Testing Locations	265
Figure 16-3.	Site 18Cv481, Phase Ib Typical STP Profile.....	267
Figure 16-4.	Site 18Cv481 Vicinity in 1905	269

Figure 16-5.	Site 18Cv481, Phase II Testing Locations	271
Figure 16-6.	Site 18Cv481, Phase II STP Distribution of All Artifacts	273
Figure 16-7.	Site 18Cv481, Phase II STP Distribution of Architecture Artifacts (top) and Kitchen Artifacts (bottom).....	275
Figure 16-8.	Site 18Cv481, Profile of Test Unit 3 (top) and Test Unit 4 (bottom)	277
Figure 16-9.	Site 18Cv481, Profile of Test Unit 7	279
Figure 16-10.	Site 18Cv481 Profile of Test Unit 1 (top) and Test Unit 2 (bottom)	281
Figure 17-1.	Site 18Cv482 Location	299
Figure 17-2.	Site 18Cv482, Phase Ib Testing Locations	301
Figure 17-3.	Site 18Cv482, Phase Ib Typical STP Profile.....	303
Figure 17-4.	Site 18Cv482, Phase II Testing Locations	305
Figure 17-5.	Site 18Cv482, Phase II STP Distribution of All Artifacts	307
Figure 17-6.	Site 18Cv482, Phase II STP Distribution of Architecture Artifacts (top) and Kitchen Artifacts (bottom).....	309
Figure 17-7.	Site 18Cv482, Test Units 1, 8, 9, 10, and 11 Plan View	311
Figure 17-8.	Site 18Cv482, Feature 5 Plan View	313
Figure 17-9.	Site 18Cv482, Test Units 1 and 8 East Profile.....	315
Figure 17-10.	Site 18Cv482, Test Units 3 and 4, Plan View	317
Figure 17-11.	Site 18Cv482, Test Unit 3, South Profile	319
Figure 17-12.	Site 18Cv482, Test Unit 4, East Profile.....	321
Figure 17-13.	Site 18Cv482, Test Unit 2, West Profile.....	323
Figure 17-14.	Site 18Cv482, Test Unit 5, South Profile	325
Figure 17-15.	Site 18Cv482, Test Unit 6, West Profile.....	327
Figure 17-16.	Site 18Cv482, Test Unit 7, East Profile.....	329
Figure 18-1.	Site 18Cv483 Location	335
Figure 18-2.	Site 18Cv483 Showing Phase Ib Testing Locations	337
Figure 18-3.	Site 18Cv483: Representative STP Profiles—STPs F1 and E1	339
Figure 18-4.	Site 18Cv483: Representative STP Profile—STP G5	341
Figure 19-1.	Site 18Cv484 Showing Phase Ib Testing Locations	345
Figure 19-23.	Site 18Cv484 Showing Phase Ib Testing Locations	347
Figure 19-3.	Site 18Cv484: Representative STP Profiles—STPs H5 and R8	349
Figure 20-1.	Site 18Cv485 Location	353
Figure 20-2.	Site 18Cv485 Showing Phase Ib Testing Locations	355
Figure 20-3.	Site 18Cv485: Representative STP Profile—STP N2.....	357

Draft Technical Report: CCNPP Phase I and Phase II Cultural Resources Investigations

Figure 21-1.	Site 18Cv486 Location	361
Figure 21-2.	Site 18Cv486 Showing Phase Ib Testing Locations	363
Figure 21-3.	Site 18Cv486: Representative STP Profile—STP H1	365
Figure 22-1.	Site 18Cv487 Location	369
Figure 22-2.	Site 18Cv487 Showing Phase Ib Testing Locations	371
Figure 22-3.	Site 18Cv487: Representative STP Profile—STP R14	373
Figure 23-1.	Site 18Cv489 Location	377
Figure 23-2.	Site 18Cv489 Showing Phase Ib Testing Locations	379
Figure 23-3.	Site 18Cv489: Representative STP Profile—STP R9	381
Figure 24-1.	Site 18Cv490 Location	385
Figure 24-2.	Site 18Cv490 Showing Phase Ib Testing Locations	387
Figure 24-3.	Site 18Cv490: Representative Phase Ib Shovel Test Profiles—STP D-1 and STP J-2	389
Figure 25-1.	Location of Parran's Park (CT-58)	397
Figure 25-2.	Recommended NRHP Boundary of Parran's Park (CT-58)	399
Figure 25-3.	Location of Preston's Cliffs (CT-59)	405
Figure 25-4.	Recommended NRHP Boundary of Preston's Cliffs (CT-59)	407
Figure 25-5.	Location of Calvert Cliffs Nuclear Power Plant (CT-154)	411
Figure 25-6.	Location of Baltimore and Drum Point Railroad (CT-1295)	415
Figure 25-7.	Recommended NRHP Boundary of Baltimore and Drum Point Railroad (CT-1295)	417
Figure 25-8.	Location of Camp Conoy (CT-1312)	423
Figure 25-9.	Recommended NRHP Boundary of Camp Conoy (CT-1312)	425

List of Tables

Table 4-1.	Previously-Recorded Archaeological Sites within 3.2 kilometer (2-Mile) Radius of Project Area	35
Table 6-1.	Summary of Phase Ib Archaeological Survey Results by Test Area	62
Table 6-2.	Summary of Identified Archeological Sites, Phase Ib Archaeological Survey	64
Table 6-3.	Summary of Identified Isolated Finds, Phase Ib Archaeological Survey	65
Table 7-1	Summary of Phase II Results by Site	69
Table 9-1	Site 18Cv474, Phase Ib Pattern Analysis	76
Table 9-2	Site 18Cv474, Chain-of-Title	77
Table 9-3	Site 18Cv474, Test Unit Summary Information	80
Table 9-4	Site 18Cv474, Foundation Vicinity—Test Unit 1, 2, 7, 10, Artifact Assemblages	81
Table 9-5	Site 18Cv474, Foundation Vicinity—Test Unit 4 and 8, Artifact Assemblages	84
Table 9-6	Site 18Cv474, South Yard Area—Test Unit 3 and 5, Artifact Assemblages	85
Table 9-8	Site 18Cv474, Feature Summary Information	88
Table 9-9	Site 18Cv474, Feature 1 and 1a Artifact Assemblages	89
Table 9-10	Site 18Cv474, Feature 2a Artifact Assemblages	91

Table 9-11	Site 18Cv481, Phase I/II Pattern Analysis	92
Table 9-12	Site 18Cv481, Phase I/II Dating Analysis.....	95
Table 12-1	Site 18Cv477: Pattern Analysis, Historic Artifacts.....	150
Table 12-2	Site 18Cv477: Dating Analysis, Historic Artifacts.....	151
Table 13-11	Site 18Cv478: Pattern Analysis, Historic Artifacts.....	162
Table 13-2	Site 18Cv478: Dating Analysis, Historic Artifacts.....	162
Table 14-1	Site 18Cv479: Crosstabulation of Artifact Type by Raw Material	169
Table 15-1	Site 18CV480, Phase Ib Pattern Analysis.....	179
Table 15-4	Site 18Cv480, Pattern Analysis for North Yard Units.....	188
Table 15-5	Site 18Cv480, Pattern Analysis for North Yard Extension Limits.....	190
Table 15-6	192Site 18Cv480, Pattern Analysis for Northwest Yard Area.....	192
Table 15-7	Site 18Cv480, Pattern Analysis for Former House, and East, West, and South Yard Areas.....	194
Table 15-9	Site 18Cv480, Pattern Analysis for Feature 1 Complex.....	198
Table 15-10	Site 18Cv480, Feature 1 Complex, Dating Analysis	199
Table 15-12	Site 18Cv480, Ab Horizon, Dating Analysis	202
Table 15-13	Site 18Cv480, Feature 3 Pattern Analysis	203
Table 15-14	Site 18Cv480, Pattern Analysis for F8 and F8B.....	204
Table 15-15	Site 18Cv480, Pattern Analysis, Postmold and Posthole Features	205
Table 15-16	Site 18Cv480, Feature 5 Pattern Analysis	206
Table 15-17	Site 18Cv480, Features 15 and 16, Pattern Analysis	207
Table 15-18	Site 18Cv480, Phase I/II Pattern Analysis	208
Table 16-5	Site 18Cv481 Dating Analysis	262
Table 17-1	Site 18Cv482, Phase Ib Pattern Analysis	284
Table 17-2	Site 18Cv482 Chain-of-Title	285
Table 17-3	Site 18Cv482 Test Unit Summary Information.....	286
Table 17-4	Site 18Cv482, Cluster 1: Test Units 1, 8, 9, 10, and 11, Artifact Assemblages.....	287
Table 17-5	Site 18Cv482, Cluster 2: Test Units 3 and 4, Artifact Assemblages.....	289
Table 17-6	Site 18Cv482, Yard Area: Test Units 2, 5, 6 and 7, Artifact Assemblages.....	291
Table 17-7	Site 18Cv482, Feature 1/3/3a, Artifact Assemblages	292
Table 17-8	Site 18Cv482, Feature 1/3/3a, Dating Analysis	293
Table 17-9	Site 18Cv482, Feature 5 Artifact Assemblage	295
Table 17-10	Site 18Cv482, Phase I/II Pattern Analysis	295
Table 17-11	Site 18Cv482, Phase I/II Dating Analysis.....	297
Table 18-1	Site 18Cv483: Pattern Analysis, Historic Artifacts.....	332
Table 18-2	Site 18Cv483: Dating Analysis, Historic Artifacts.....	332
Table 19-1	Site 18Cv484: Pattern Analysis, Historic Artifacts.....	344
Table 20-1	Site 18Cv485: Pattern Analysis, Historic Artifacts.....	352
Table 20-2	Site 18Cv485: Dating Analysis, Historic Analysis	352
Table 21-1	Site 18Cv486: Pattern Analysis, Historic Artifacts.....	359
Table 22-1	Site 18Cv487: Pattern Analysis, Historic Artifacts.....	367
Table 23-1	Site 18Cv489: Pattern Analysis, Historic Artifacts.....	376
Table 23-2	Site 18Cv489: Dating Analysis, Historic Artifacts.....	376
Table 24-1	Site 18Cv490: Pattern Analysis, Historic Artifacts.....	384
Table 25-1	Summary of Surveyed Architectural Resources	392
Table 26-2	Identified Archeological Sites: Summary and Recommendations	428
Table 26-3	Summary of Identified Architectural Resources.....	431

List of Photographs

Photograph 1-1.	View of Woodlands in Camp Conoy Section of Project Area, Structure (Site 18Cv474) in Background, Facing North	1
Photograph 1-2.	View of Fallow Field and Structure 3 (Tobacco Barn) in Old Bay Farm Section (Site 18Cv480), Facing East	1
Photograph 1-3.	View of Camp Conoy Section of Project Area Showing Gates with Picnic Pavilion and Camp Conoy Lodge in Distance, Facing East.....	5
Photograph 5-1.	Disturbance in Lake Davies Section, Facing Northwest	54
Photograph 5-2.	View of Wooded Ridgetop in Camp Conoy Section, Facing South.....	54
Photograph 5-3.	View of Open Field in Old Bay Farm Section (18Cv480), Tobacco Barn (Structure 4) and Modern Buildings in Distance, Facing Southeast.....	54
Photograph 5-4.	View of Extensive Wetland in Eastern Portion of Johns Creek Valley (Supplemental Phase I Area), Facing Southwest.....	55
Photograph 5-5.	View of Wetland in Woodland Branch Valley (Supplemental Phase I Area), Facing East.....	55
Photograph 6-1.	Shovel Testing in Fields in Old Bay Farm Section, Area 1 (Site 7), Facing North	59
Photograph 6-2.	Shovel Testing in Woodlands with Numerous Tree Falls, in Camp Conoy Section, Facing North	59
Photograph 6-3.	View of Woodlands in Lake Davies Section of Project Area, Facing North	60
Photograph 6-4.	View of Fallow Field and Structure 3 (Tobacco Barn) in Old Bay Farm Section (18Cv480, Facing South.....	61
Photograph 9-1.	Site 18Cv474 Showing Chimney Foundation and Rubble Pile, View to Southeast.....	75
Photograph 9-2.	West Profile of Test Unit 2, View to East. Note mortar beneath rock wall.	83
Photograph 9-3.	Overview of Test Unit 4, View to South. Note continuation of stone wall to the south with Test Unit 1 in middle and Test Unit 2 in background.	83
Photograph 9-4.	Overview of Feature 1, View to South.....	88
Photograph 9-5.	Overview of Chimney Base, view to west.	88
Photograph 9-6.	Two pipe stems, blue bead, and tooth fragment (FS 136)	89
Photograph 9-7.	Sample of Annular Yellowware (FS 88, 89, 118, 120) and Hand-painted Whiteware (FS 89, 132).....	94
Photograph 10-1.	Site 18Cv475 Showing Disturbed Fieldstone Scatter, Facing East	133
Photograph 11-1.	Overview of Site 18Cv476 Showing Modern Surface Refuse, Facing Northwest.....	141
Photograph 12-1.	Site 18Cv477 showing Structure 5 (Tobacco Barn) at Northern End of Site, Facing South.....	149
Photograph 12-2.	Site 18Cv477 showing Refuse Dump on Side Slope, Facing North	149
Photograph 13-1.	Overview of Site 18Cv478 Showing Wooded Knoll Crest, Facing Northeast	161
Photograph 14-1.	Overview of Site 18Cv479, Facing East	169

Photograph 14-2.	Untyped Projectile Point (FS 5).....	170
Photograph 15-1.	Overview of Site 7 from Northwest Corner of Area A, Showing Low Field (Area A), Higher-Elevation Area 2 (Locus 1) and Structure 3 (Tobacco Barn) in Distance, Facing East.....	177
Photograph 15-2.	Site 7, View of Field at South End of Area 2 Showing Modern Garage and Structure 4 (Tobacco Barn), View to Southwest.....	177
Photograph 15-3.	Aerial View of Farmstead at Site 18Cv480, View to Southeast.....	178
Photograph 15-4.	Aerial View of Farmstead at Site 18Cv480, View to South.....	178
Photograph 15-5.	Aerial View of Structure 4 Complex at Site 18Cv480, View to Southwest.....	178
Photograph 15-6.	Sample of Seven Whiteware, Including One Shell Edge (FS 351), Two Hand Painted (FS 351 and FS 370) and Four Transfer Print (FS 351, 354 and 360).....	209
Photograph 15-7.	Sample of Willow Ware Tea Cup (FS 409).....	210
Photograph 15-8.	Sample of Two White Ball Clay Pipes (FS 323 and FS368).....	210
Photograph 15-9.	Sample of Two Porcelain Doll Parts (FS 346 and FS 354), Three Glass Marbles (FS 346 and FS 354) and One White Ball Clay Marble (FS 350).....	210
Photograph 16-1.	Site 18Cv481 in Fallow Field, Facing East.....	255
Photograph 16-2.	Site 18Cv481, Plan View of TU 2 Showing Excavated Plow Scars, View to East.....	258
Photograph 16-3.	Site 18Cv481, Sample of Decorated Whiteware Sherds (FS 27, 62, 65).....	260
Photograph 16-4.	Site 18Cv481, Sample of White Ball Clay Pipe Fragments (FS 62).....	261
Photograph 17-1.	Overview of Site 18Cv482 with Line of Pine Trees Marking Edge of Old Road Trace, View to Southwest.....	283
Photograph 17-3.	Overview of Feature 5, View to Northeast.....	294
Photograph 17-4.	Sample of Stoneware Pipe Fragment and White Ball Clay Pipe Bowl Fragments (FS 62).....	297
Photograph 18-1.	Site 18Cv483 Showing Structure 1 on Grassy Hilltop, Facing Southeast.....	331
Photograph 19-1.	Site 18Cv484 Showing Field, Facing East.....	343
Photograph 20-1.	Site 18Cv485 Showing Saddle, Facing Southeast.....	351
Photograph 21-1.	Site 18Cv486 Showing Wooded Ridgespur, Facing East.....	359
Photograph 23-1.	Site 18Cv489 in Fallow Field, Facing South.....	375
Photograph 24-1.	Site 18Cv490 Showing Eagle's Den (CT-1312), on Grassy Hilltop, Facing Northwest.....	383
Photograph 25-1.	Parran's Park (CT-58), Facing Southwest.....	393
Photograph 25-2.	Parran's Park Tobacco Barn Structure 3, Southwest and Southeast Elevations (CT-58), Facing Northeast.....	393

Draft Technical Report: CCNPP Phase I and Phase II Cultural Resources Investigations

Photograph 25-3.	Parran's Park Tobacco Barn Structure 4, Southwest and Southeast Elevations (CT-58), Facing Northeast	393
Photograph 25-4.	Parran's Park Tobacco Barn Structure 5, South and East Elevations (CT-58), Facing West.....	394
Photograph 25-5.	Parran's Park Demolished Residence (CT-58), Facing Northeast (Library of Congress)	394
Photograph 25-6.	Preston's Cliffs Residence, 1936, Façade and Southeast Elevation (CT-59), Facing Northwest (Photo: Library of Congress).....	401
Photograph 25-7.	Preston's Cliffs, Ruins of Residence (CT-59), Facing Northwest.....	401
Photograph 25-8.	Preston's Cliffs Visitor's Center, Modern Frame Building (CT-59), Facing Northwest.....	401
Photograph 25-9.	Preston's Cliffs Tobacco Barn A, South and East Elevations (CT-59 A), Facing Northwest.....	402
Photograph 25-10.	Preston's Cliffs Visitor's Center, Formerly Tobacco Barn B (CT-59 B), Facing East.....	402
Photograph 25-11.	Preston's Cliffs Tobacco Barn C, Southwest and Northwest Elevations (CT-59 C), Facing East.....	402
Photograph 25-12.	Baltimore & Drum Point Railroad (CT-1295), Facing Northwest.....	413
Photograph 25-13.	Baltimore & Drum Point Railroad, Railbed (CT-1295), Facing Northwest.....	413
Photograph 25-14.	Camp Conoy Lodge (Structure 1), Façade and West Elevation, Camp Conoy (CT-1312), Facing East.....	419
Photograph 25-15.	Eagle's Den, West and East Elevations, Camp Conoy (CT-1312), Facing South	419
Photograph 25-16.	Eagle's Den, Façade, Camp Conoy (CT-1312), Facing East	419
Photograph 25-17.	Masonry Garage, Façade and South Elevation, Camp Conoy (CT-1312), Facing North	420
Photograph 25-18.	Tennis Courts, Camp Conoy (CT-1312), Facing Northwest	420
Photograph 25-19.	Pool Buildings, Camp Conoy (CT-1312), Facing North	420
Photograph 25-20.	Ball Field, Picnic Pavilion and Storage Shed (Structure 2), Camp Conoy (CT-1312), Facing Northeast.....	421

Contents of the Report are withheld per Section 34 of the National Historic Preservation Act
And
Title 36 of the Code of Federal Regulations Part 800.11(c)