

## Franke, Mark

---

**From:** Lake, Louis  
**Sent:** Tuesday, October 13, 2009 1:26 PM  
**To:** Franke, Mark  
**Subject:** FW: 2009 Oct 13 - Containment - NRC SIT Briefing.pptx  
**Attachments:** 2009 Oct 13 - Containment - NRC SIT Briefing.pptx  
  
**Importance:** High

---

**From:** Herrin, Dennis W. [mailto:Dennis.Herrin@pgnmail.com]  
**Sent:** Tuesday, October 13, 2009 1:15 PM  
**To:** Saba, Farideh; Lake, Louis  
**Cc:** Miller, Garry  
**Subject:** FW: 2009 Oct 13 - Containment - NRC SIT Briefing.pptx  
**Importance:** High

Call in on 352.563.4901. The NRC Entrance Meeting begins at 13:30.

*Dennis W. Herrin*

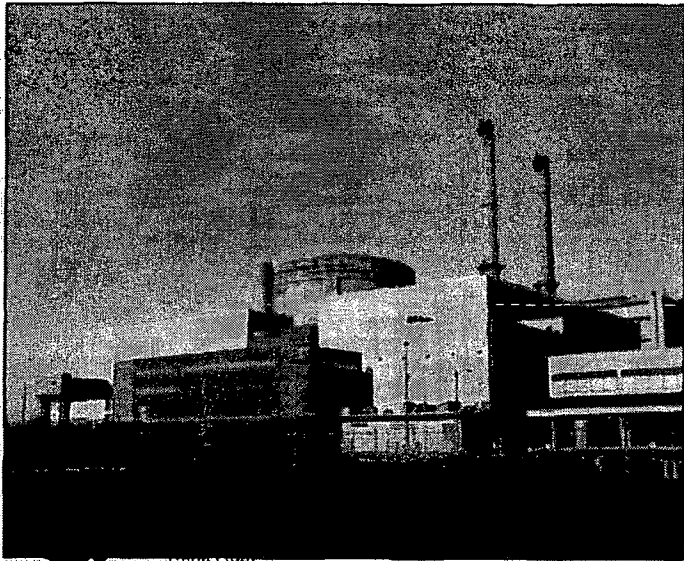
Lead Engineer - Licensing & Regulatory Programs  
Progress Energy Florida, Inc.  
Crystal River Unit 3  
352-563-4633  
Voicenet 240-3299  
Dennis.Herrin@pgnmail.com

---

**From:** Miller, Garry  
**Sent:** Tuesday, October 13, 2009 1:12 PM  
**To:** Herrin, Dennis W.  
**Subject:** 2009 Oct 13 - Containment - NRC SIT Briefing.pptx

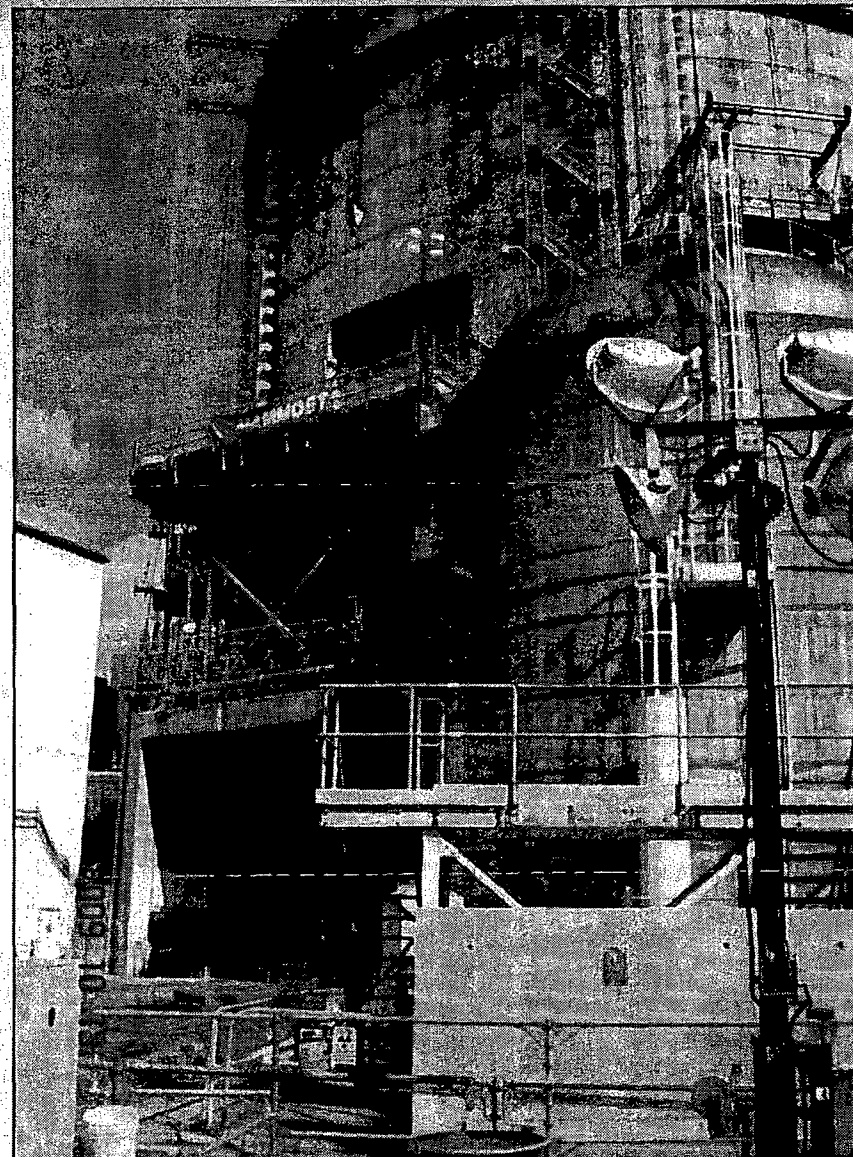
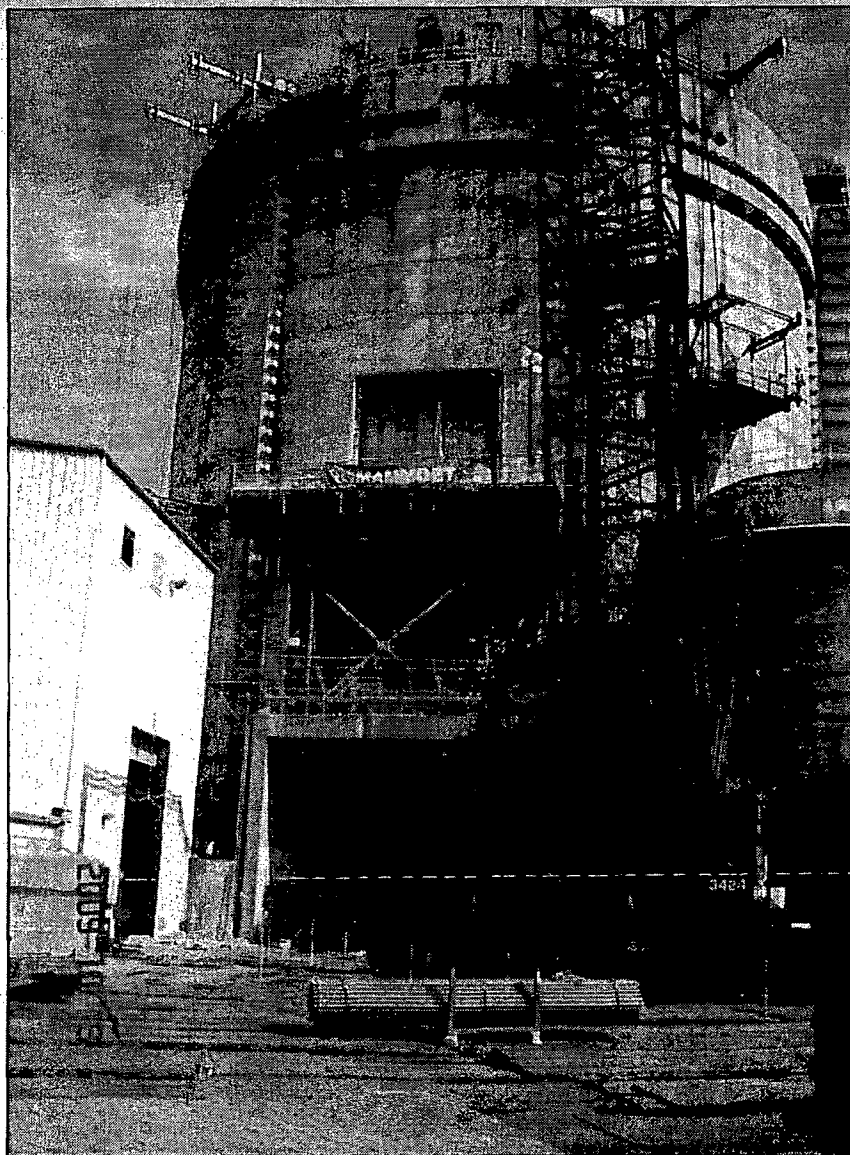
# **Crystal River Unit #3** ***Containment Project Overview***

**Oct 13<sup>th</sup> 2009**



**Progress Energy**

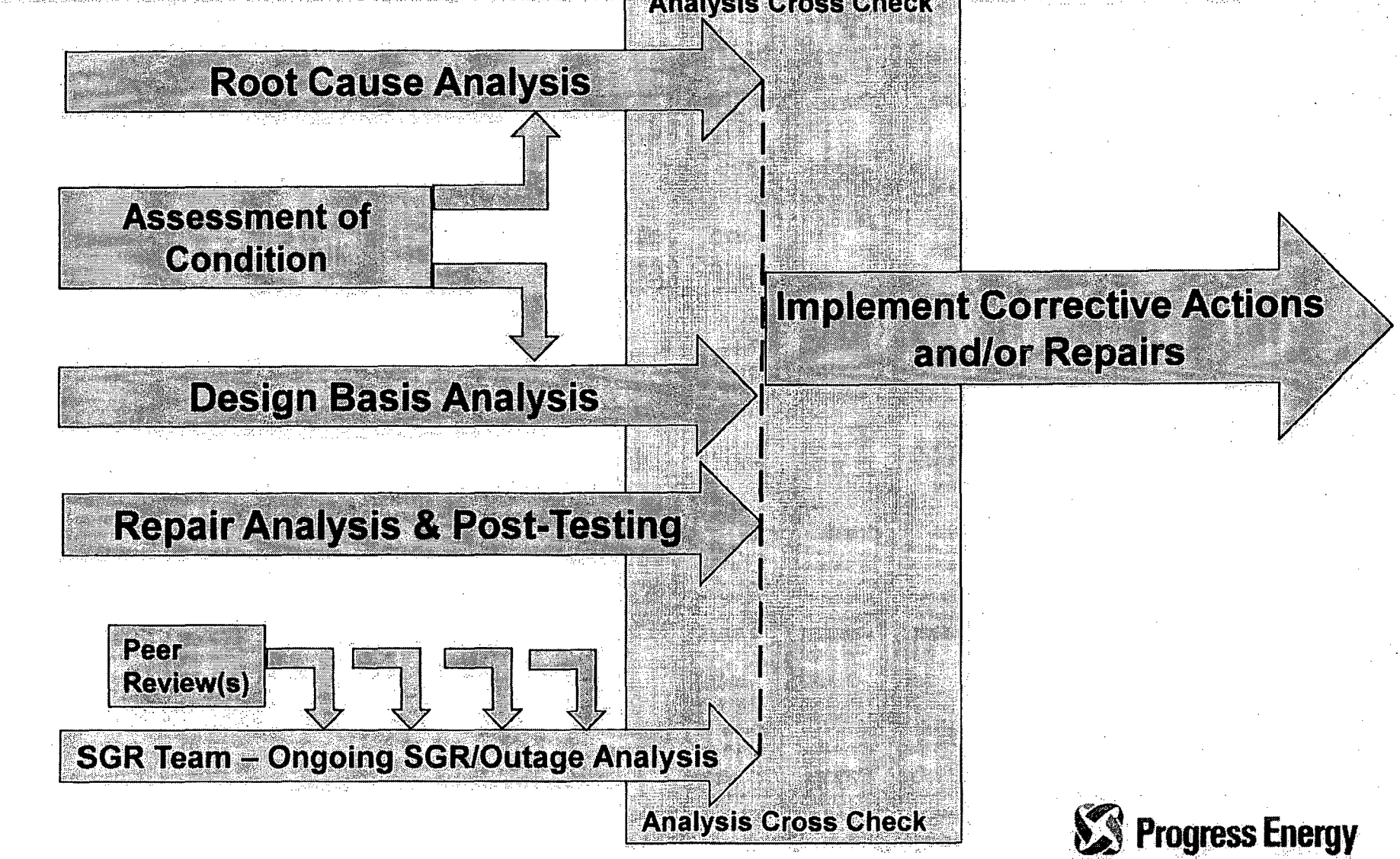
# Photos



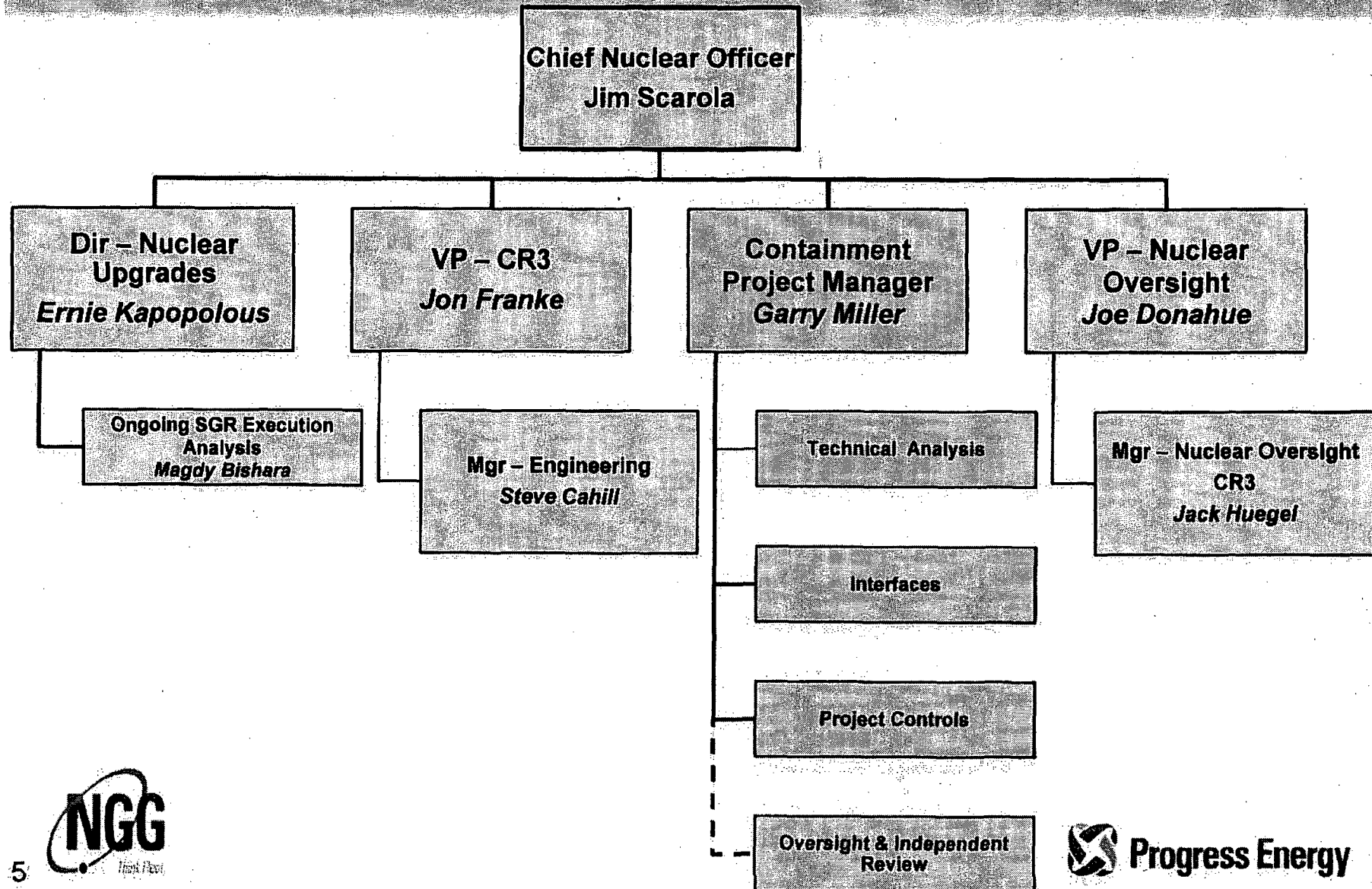
# Mission

- Complete a comprehensive root cause analysis addressing cause and extent of condition and current/past operability, and identify necessary corrective actions and/or repairs that meet design/licensing basis requirements, and then direct implementation of those corrective actions and/or repairs, while supporting ongoing SGR execution.
- This will be achieved via:
  - Use of highly qualified PGN and industry subject matter experts (SMEs) and highly capable experienced A/E firms
  - Completion of specialized engineering analysis and acquisition of field data to support conclusions
  - Use of independent technical reviews for major work products
  - Use of effective project management controls
  - Integration with ongoing CR3 outage execution
  - Ongoing dialogue with the industry as the investigation advances

# Project Work Flow

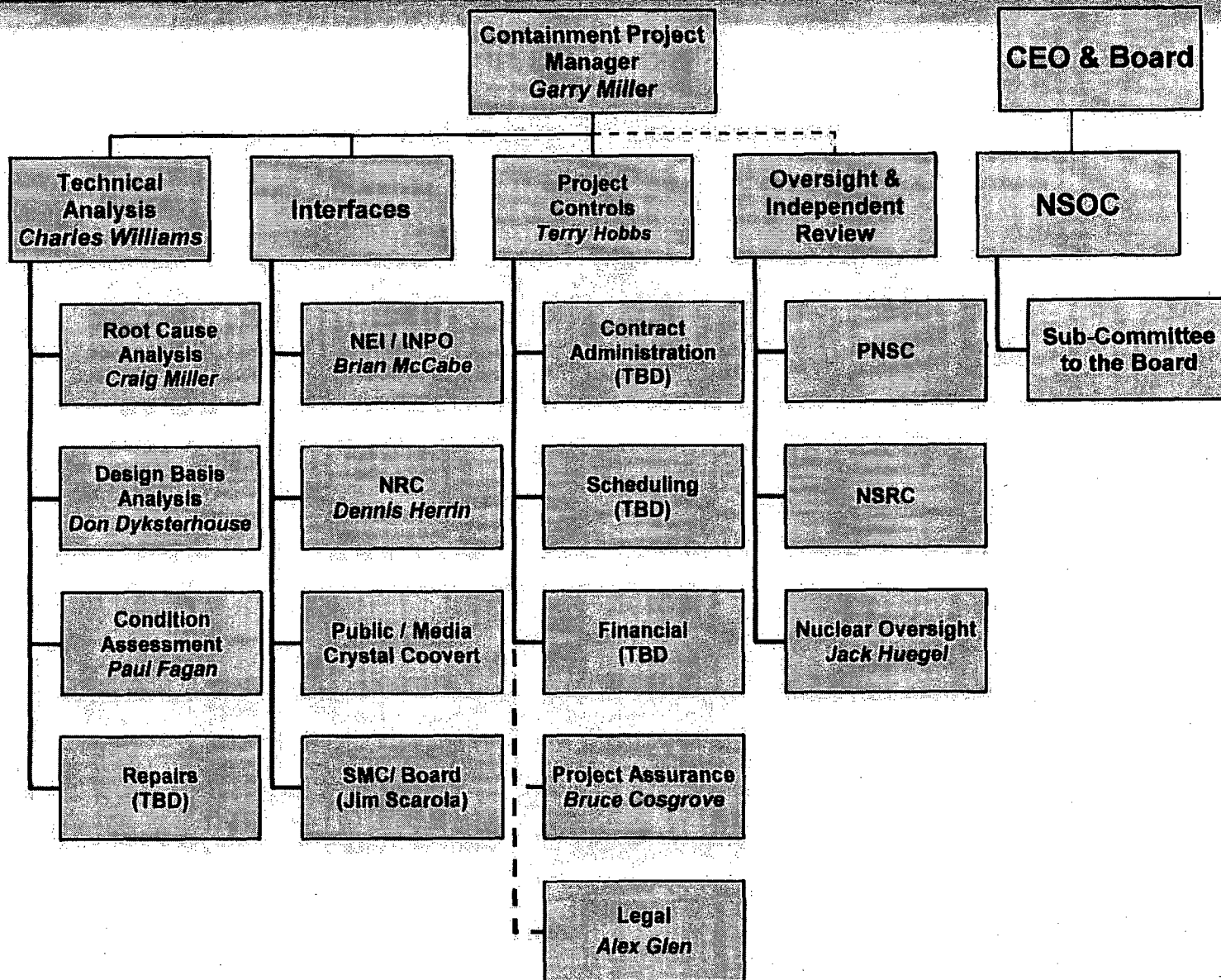


# Organization – Reporting View

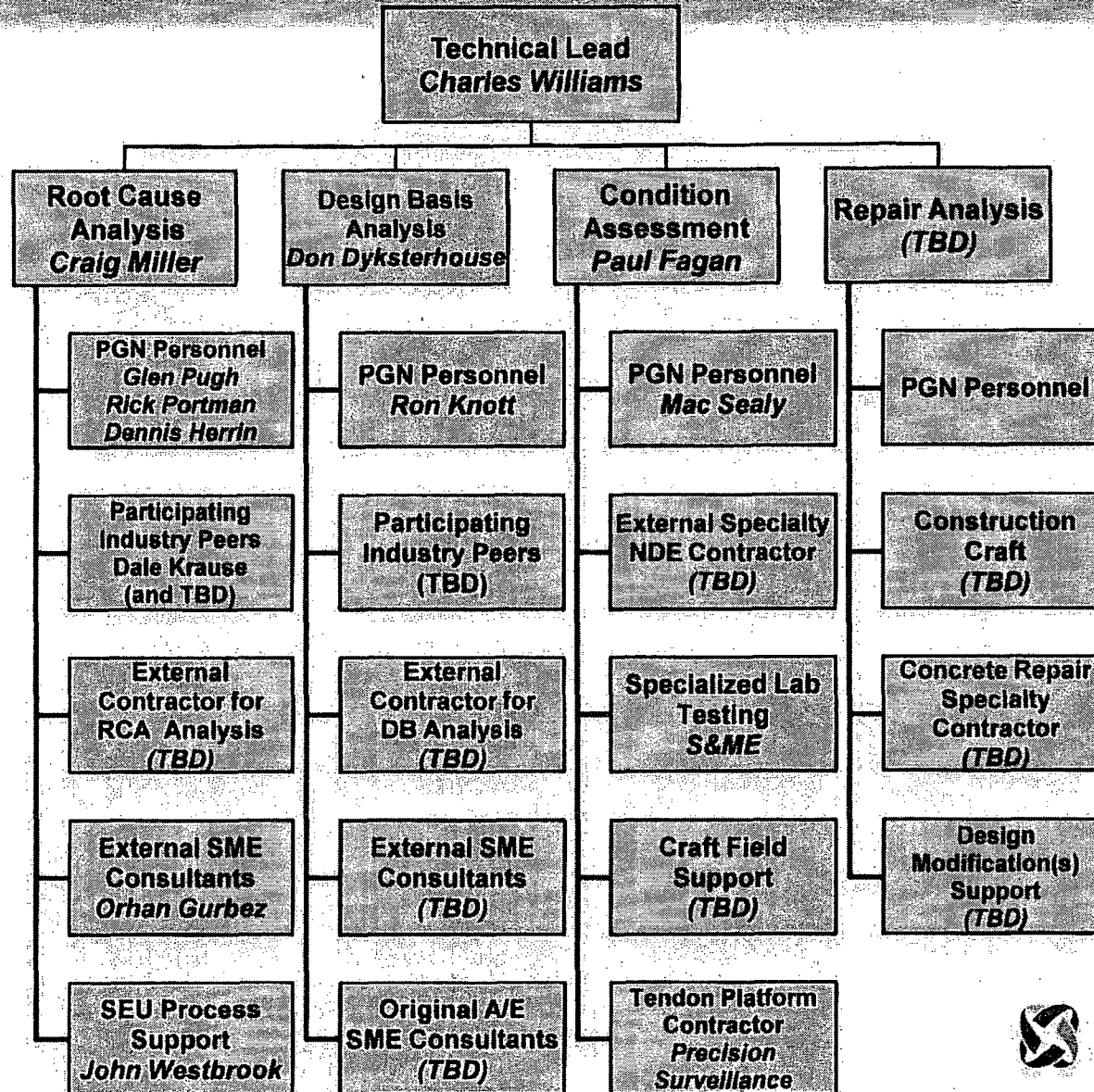




# Organization – Functional View



# Organization – Technical Structure





# R16 Outage Timeline

Event	Current Schedule
Start Restoration of Liner	Nov 25, 2009
Start Concrete Placement	Dec 4, 2009
Start Fuel Load	Dec 8, 2009
ILRT	Dec 15, 2009
Return to Grid	Dec 24, 2009