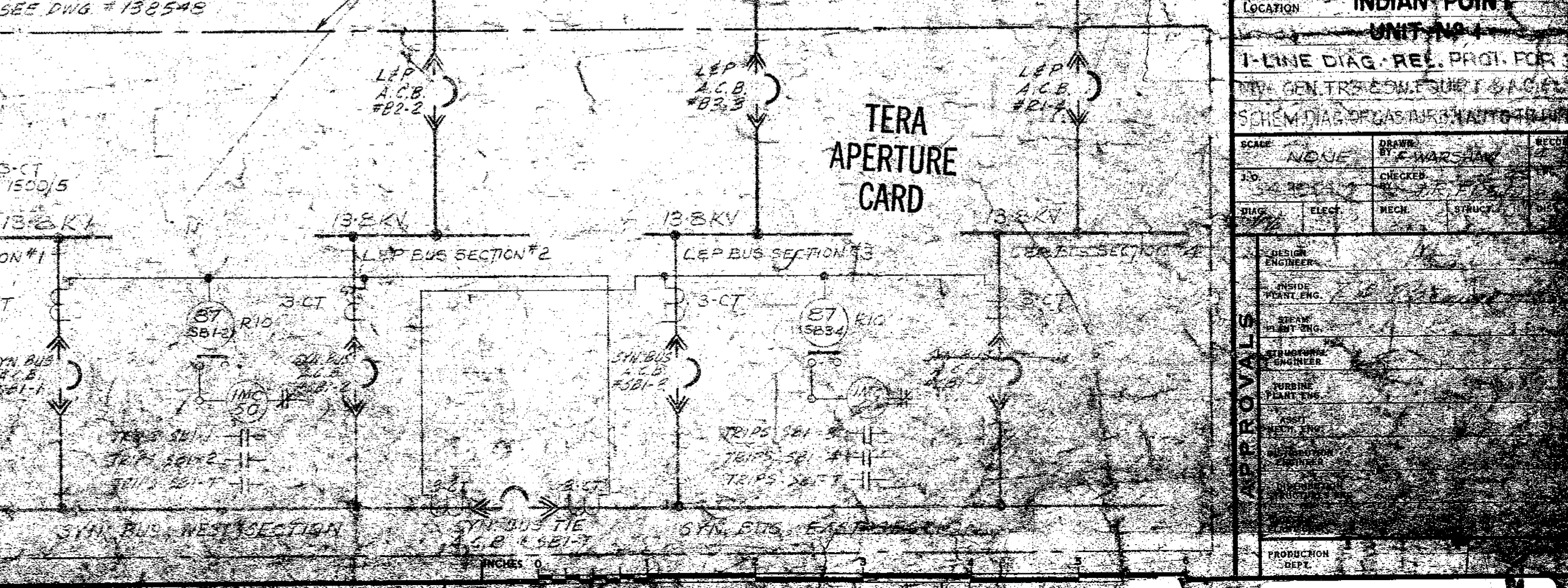


**POOR ORIGINAL**

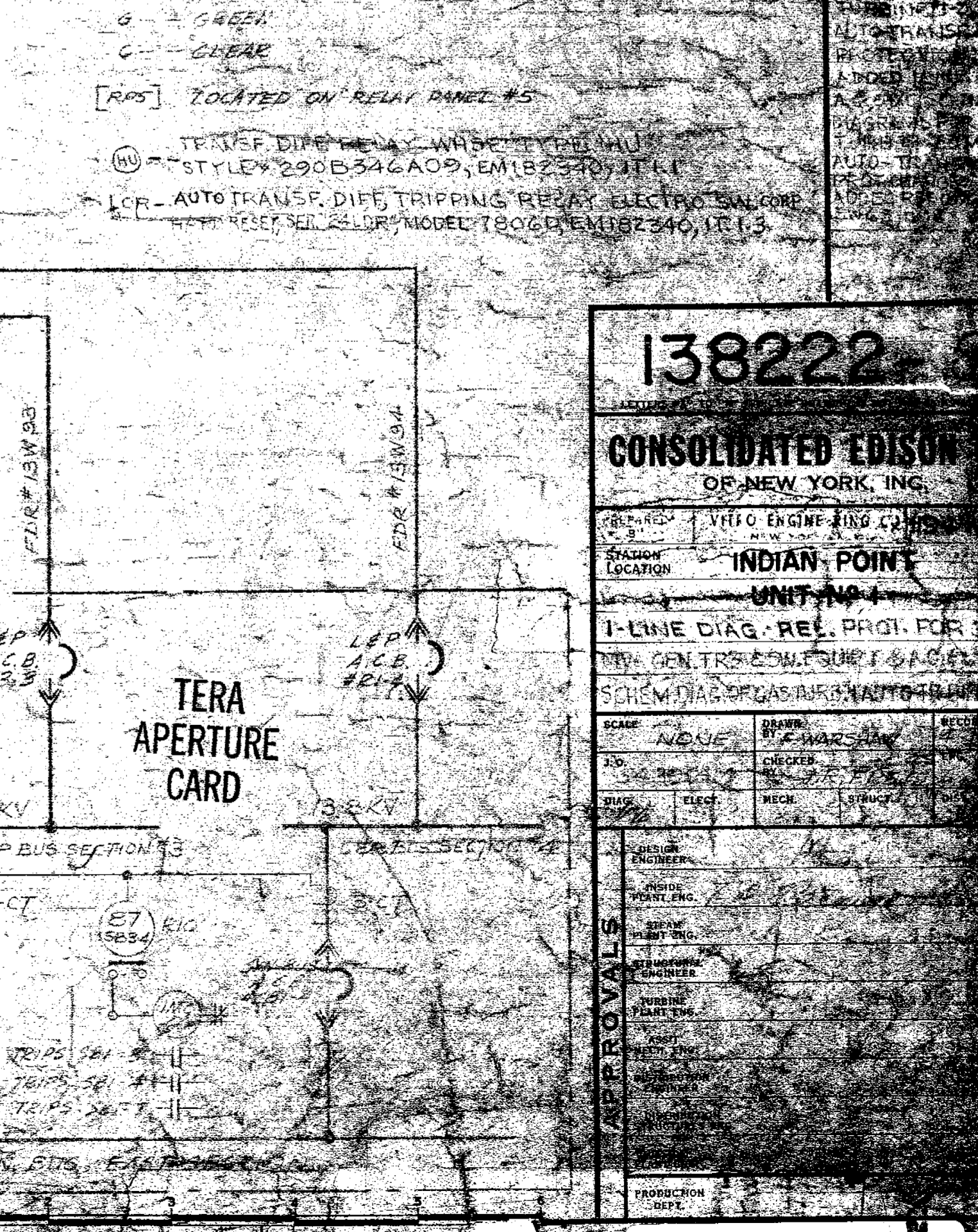
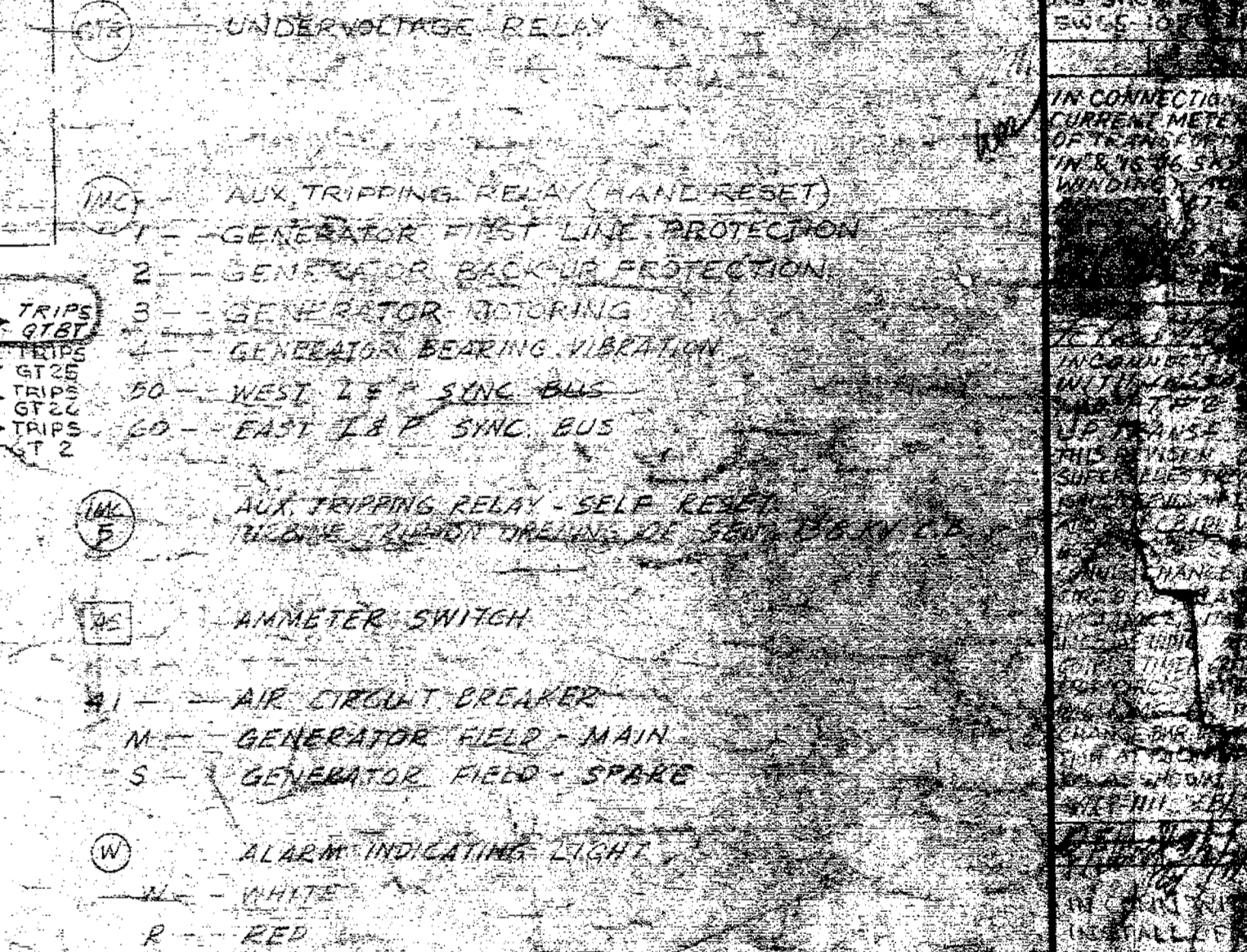
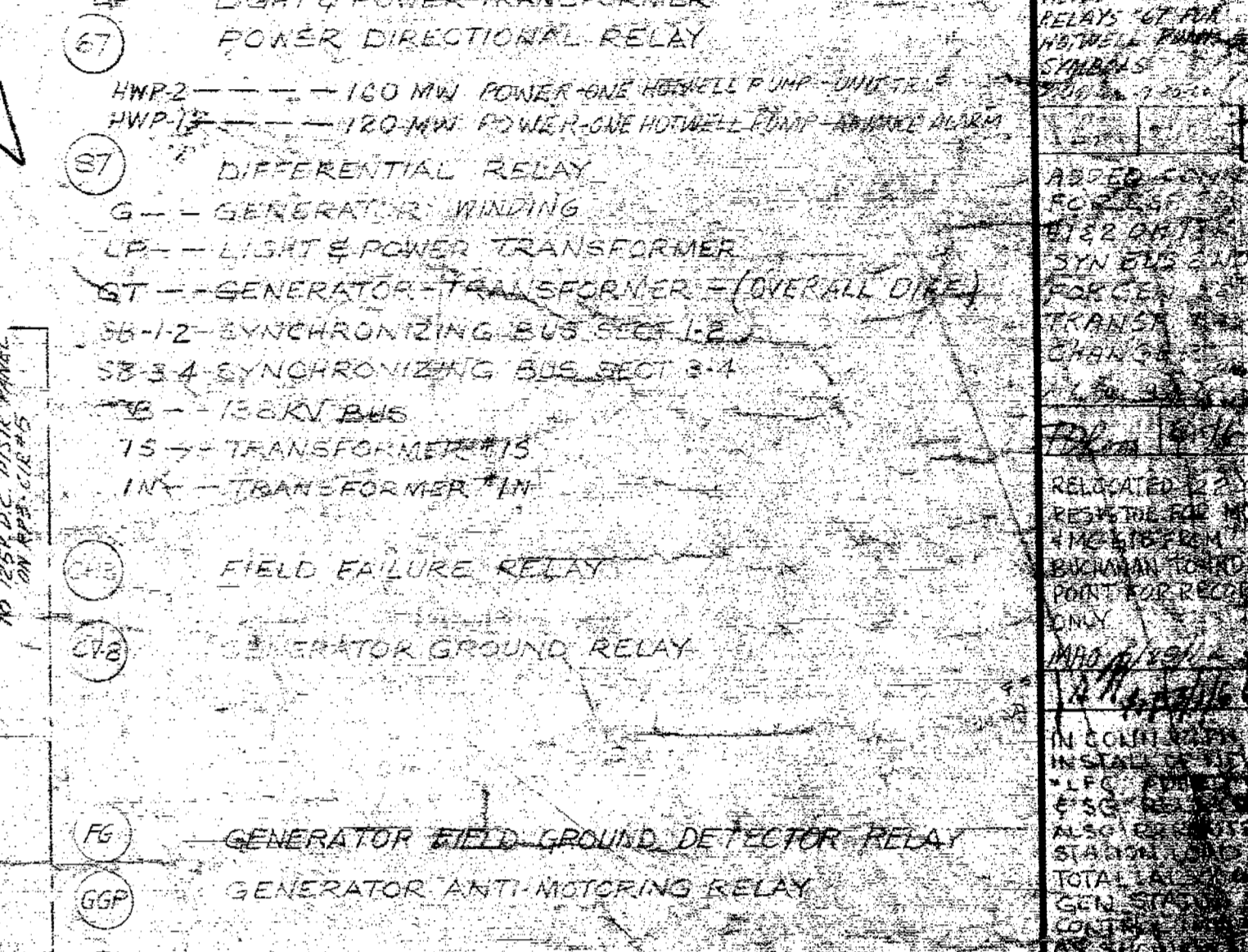
FOR RELAY PROTECTION & METERING ON 13.8 KV L.S.P. BUS SEE DWG # 138222



- Legend:**
- (A) AMMETER
  - (F) FREQUENCY METER
  - (G) FIELD TEMPERATURE RECORDER
  - (H) REACT. 50 AMPERE METER
  - (I) THERMAL OVERSETER
  - (J) THERMISTERS
  - (K) VOLT METER
  - (L) WATT METER
  - (M) WATT HOUR METER
  - (N) OVERCURRENT RELAY
  - (O) GROUND RELAY
  - (P) LIGHT & POWER TRANSFORMER
  - (Q) POWER DIRECTIONAL RELAY
  - (R) DIFFERENTIAL RELAY
  - (S) GENERATOR WINDING
  - (T) LIGHT & POWER TRANSFORMER
  - (U) GENERATOR TRANSFORMER (OVERALL DIKE)
  - (V) SYNCHRONIZING BUS SECT. 1-2
  - (W) SYNCHRONIZING BUS SECT. 3-4
  - (X) 13.8 KV BUS
  - (Y) TRANSFORMER #13
  - (Z) TRANSFORMER #14
  - (AA) FIELD FAILURE RELAY
  - (AB) GENERATOR GROUND RELAY
  - (AC) GENERATOR FIELD GROUND DETECTOR RELAY
  - (AD) GENERATOR ANTI-MOTERING RELAY
  - (AE) UNDERVOLTAGE RELAY
  - (AF) AUX. TRIPPING RELAY (HAND RESET)
  - (AG) GENERATOR FIRST LINE PROTECTION
  - (AH) GENERATOR BACK LINE PROTECTION
  - (AI) GENERATOR ROTORING
  - (AJ) GENERATOR BEARING VIBRATION
  - (AK) WEST 4" 5" SOLE BUS
  - (AL) EAST 4" 5" SOLE BUS
  - (AM) AUX. TRIPPING RELAY - SELF RESET
  - (AN) THERMAL OVERSETER
  - (AO) ANNUNCIATOR SWITCH
  - (AP) AIR CIRCUIT BREAKER
  - (AQ) GENERATOR FIELD - MAIN
  - (AR) GENERATOR FIELD - SPARE
  - (AS) ALARM INDICATING LIGHT
  - (AT) WHITE
  - (AU) RED
  - (AV) GREEN
  - (AW) CYAN
  - (AX) LOCATED ON RELAY PANEL #5
  - (AY) TRIPPER DIPE RELAY - WHITE (1000) STYLE # 200B, 34A09, EM 18230, 311
  - (AZ) AUTO TRANS. DIPE TRIPPING RELAY - ELECTRIC SW. WITH RESET REL. SURY MODEL 1802E, EM 18230, 311

**Legend:**

- (A) AMMETER
- (F) FREQUENCY METER
- (G) FIELD TEMPERATURE RECORDER
- (H) REACT. 50 AMPERE METER
- (I) THERMAL OVERSETER
- (J) THERMISTERS
- (K) VOLT METER
- (L) WATT METER
- (M) WATT HOUR METER
- (N) OVERCURRENT RELAY
- (O) GROUND RELAY
- (P) LIGHT & POWER TRANSFORMER
- (Q) POWER DIRECTIONAL RELAY
- (R) DIFFERENTIAL RELAY
- (S) GENERATOR WINDING
- (T) LIGHT & POWER TRANSFORMER
- (U) GENERATOR TRANSFORMER (OVERALL DIKE)
- (V) SYNCHRONIZING BUS SECT. 1-2
- (W) SYNCHRONIZING BUS SECT. 3-4
- (X) 13.8 KV BUS
- (Y) TRANSFORMER #13
- (Z) TRANSFORMER #14
- (AA) FIELD FAILURE RELAY
- (AB) GENERATOR GROUND RELAY
- (AC) GENERATOR FIELD GROUND DETECTOR RELAY
- (AD) GENERATOR ANTI-MOTERING RELAY
- (AE) UNDERVOLTAGE RELAY
- (AF) AUX. TRIPPING RELAY (HAND RESET)
- (AG) GENERATOR FIRST LINE PROTECTION
- (AH) GENERATOR BACK LINE PROTECTION
- (AI) GENERATOR ROTORING
- (AJ) GENERATOR BEARING VIBRATION
- (AK) WEST 4" 5" SOLE BUS
- (AL) EAST 4" 5" SOLE BUS
- (AM) AUX. TRIPPING RELAY - SELF RESET
- (AN) THERMAL OVERSETER
- (AO) ANNUNCIATOR SWITCH
- (AP) AIR CIRCUIT BREAKER
- (AQ) GENERATOR FIELD - MAIN
- (AR) GENERATOR FIELD - SPARE
- (AS) ALARM INDICATING LIGHT
- (AT) WHITE
- (AU) RED
- (AV) GREEN
- (AW) CYAN
- (AX) LOCATED ON RELAY PANEL #5
- (AY) TRIPPER DIPE RELAY - WHITE (1000) STYLE # 200B, 34A09, EM 18230, 311
- (AZ) AUTO TRANS. DIPE TRIPPING RELAY - ELECTRIC SW. WITH RESET REL. SURY MODEL 1802E, EM 18230, 311



**138222**

**CONSOLIDATED EDISON OF NEW YORK, INC.**

TYPE ENGINEERING DRAWING

STATION LOCATION: INDIAN POINT

UNIT: UNIT #1

1-LINE DIAG. REL. DIAG. FOR 13.8 KV BUS SECTION

SCALE: AS SHOWN

DATE: 1954

BY: [Name]

CHECKED: [Name]

APPROVED: [Name]