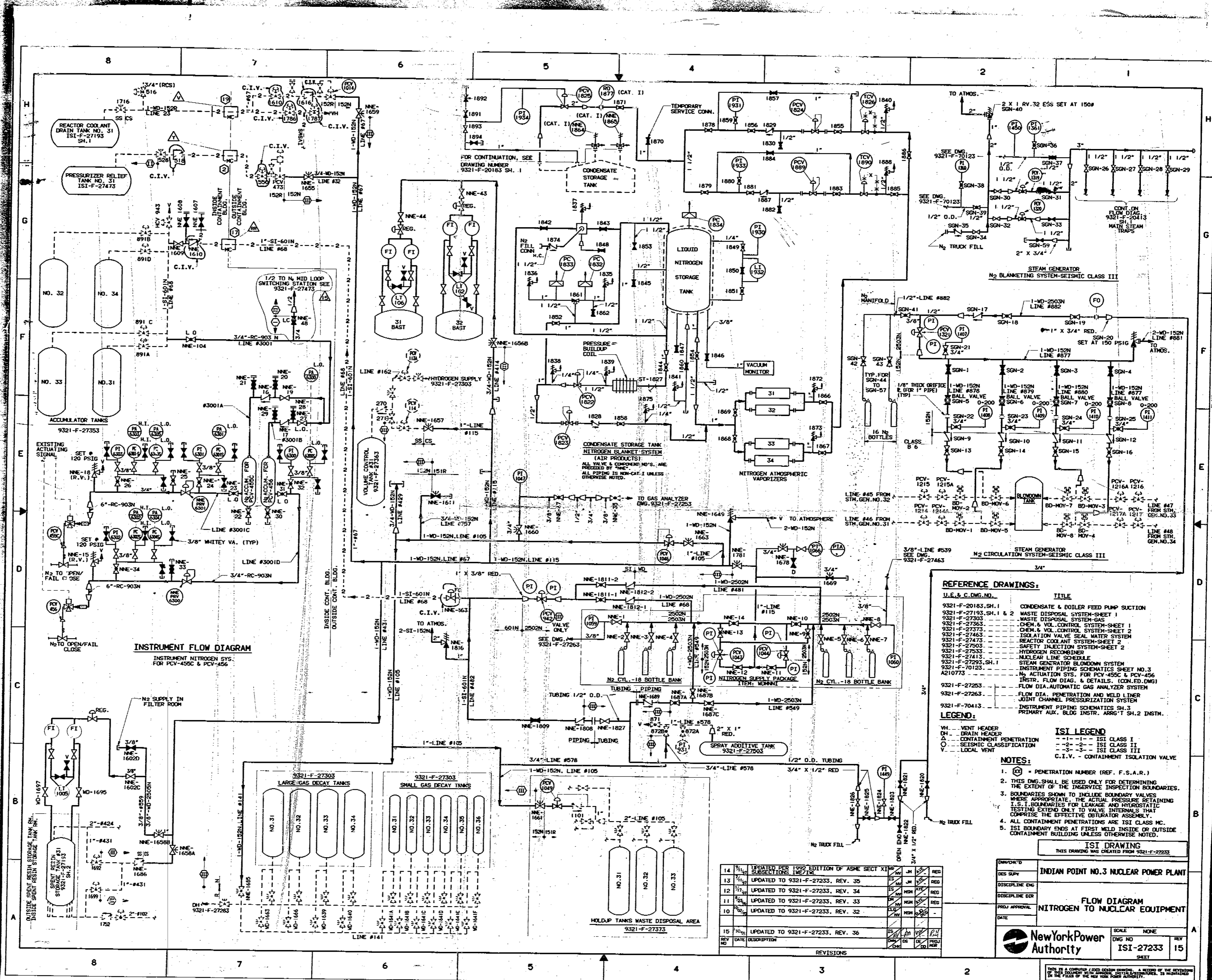


INFORMATION ONLY



- REFERENCE DRAWINGS:**
- | U.E. & C.DWG. NO. | TITLE |
|------------------------|--|
| 9321-F-20183, SH.1 | CONDENSATE & BOILER FEED PUMP SUCTION |
| 9321-F-27193, SH.1 & 2 | WASTE DISPOSAL SYSTEM-SHEET 1 |
| 9321-F-27203 | WASTE DISPOSAL SYSTEM-GAS |
| 9321-F-27353 | CHEM. & VOL. CONTROL SYSTEM-SHEET 1 |
| 9321-F-27373 | CHEM. & VOL. CONTROL SYSTEM-SHEET 2 |
| 9321-F-27463 | ISOLATION VALVE SEAL WATER SYSTEM |
| 9321-F-27475 | REACTOR COOLANT SYSTEM-SHEET 2 |
| 9321-F-27503 | SAFETY VALVING SYSTEM-SHEET 2 |
| 9321-F-27533 | HYDROGEN RECOMBINER |
| 9321-F-27413 | NUCLEAR LINE SCHEDULE |
| 9321-F-27293, SH.1 | STEAM GENERATOR BLOWDOWN SYSTEM |
| 9321-F-70123 | INSTRUMENT PIPING SCHEMATICS SHEET NO.3 |
| 4210773 | N ₂ ACTUATION SYS. FOR PCV-455C & PCV-456 |
| 9321-F-27253 | INSTR. FLOW DIAG. & DETAILS (CONC'D. OMI) |
| 9321-F-27253 | FLOW DIA. AUTOMATIC GAS ANALYZER SYSTEM |
| 9321-F-27263 | FLOW DIA. PENETRATION ZONE MILD LINER |
| 9321-F-70413 | INSTRUMENT PIPING SCHEMATICS SH.3 |
| | PRIMARY AUX. BLDG INSTR. ARG-T SH.2 INSTR. |

- LEGEND:**
- WH - VENT HEADER
 - DH - DRAIN HEADER
 - - CONTAINMENT PENETRATION
 - - SEISMIC CLASSIFICATION
 - V - LOCAL VENT
- ISI LEGEND:**
- 1- - ISI CLASS I
 - 2- - ISI CLASS II
 - 3- - ISI CLASS III
 - C.I.V. - CONTAINMENT ISOLATION VALVE
- NOTES:**
1. (P) - PENETRATION NUMBER (REF. F.S.A.R.)
 2. THIS DWG. SHALL BE USED ONLY FOR DETERMINING THE EXTENT OF THE INSERVICE INSPECTION BOUNDARIES. BOUNDARIES SHOWN TO INCLUDE BOUNDARY VALVES WHERE APPROPRIATE. THE ACTUAL PRESSURE RETAINING COMPRESS. THE EFFECTIVE ORIGINATOR ASSEMBLY TESTING EXTEND ONLY TO VALVE INTERNALS TOYAT
 3. ALL CONTAINMENT PENETRATIONS ARE ISI CLASS I.C.
 4. ISI BOUNDARY ENDS AT FIRST WELD INSIDE OR OUTSIDE CONTAINMENT BUILDING UNLESS OTHERWISE NOTED.

ISI DRAWING
THIS DRAWING WAS CREATED FROM 9321-F-27253

DESIGNER	INDIAN POINT NO.3 NUCLEAR POWER PLANT
DISCIPLINE ENG.	
DISCIPLINE SUP.	
DATE	
SCALE	NONE
DWG NO.	ISI-27233
SHEET	15

REVISIONS

NO.	DATE	DESCRIPTION	BY	CHKD.	APP'D.
14		UPDATED PER 1992 EDITION OF ASME SECT VIII SUBSECTION 1E/1F	JM	REB	
13		UPDATED TO 9321-F-27233, REV. 35	JM	REB	
12		UPDATED TO 9321-F-27233, REV. 34	JM	REB	
11		UPDATED TO 9321-F-27233, REV. 33	JM	REB	
10		UPDATED TO 9321-F-27233, REV. 32	JM	REB	
15		UPDATED TO 9321-F-27233, REV. 36	JM	REB	

9812160270

APERTURE CARD