

- LOCATE IN FAN ROOM
- VALVES FURNISHED WITH DEDT LIMIT SWITCHES IN OPENED AND CLOSED POSITIONS
- CONNECT TO V.C. PRESSURIZATION SYSTEM
- INTERLOCK FOR PURGE VENT VALVES & FANS
- CONNECT TO INSTRUMENT AIR SUPPLY SEE DWG. 9321-F-70093.

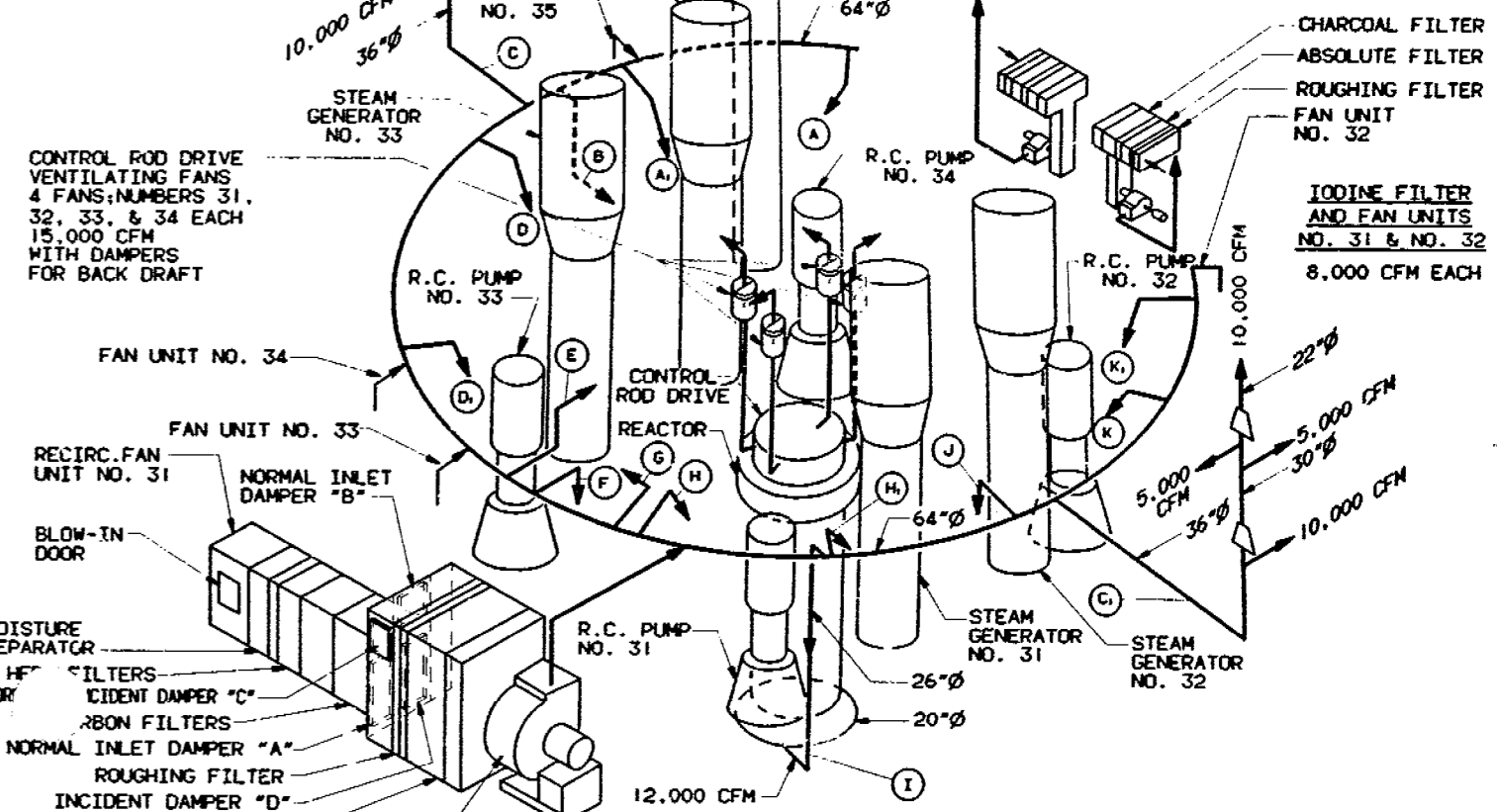
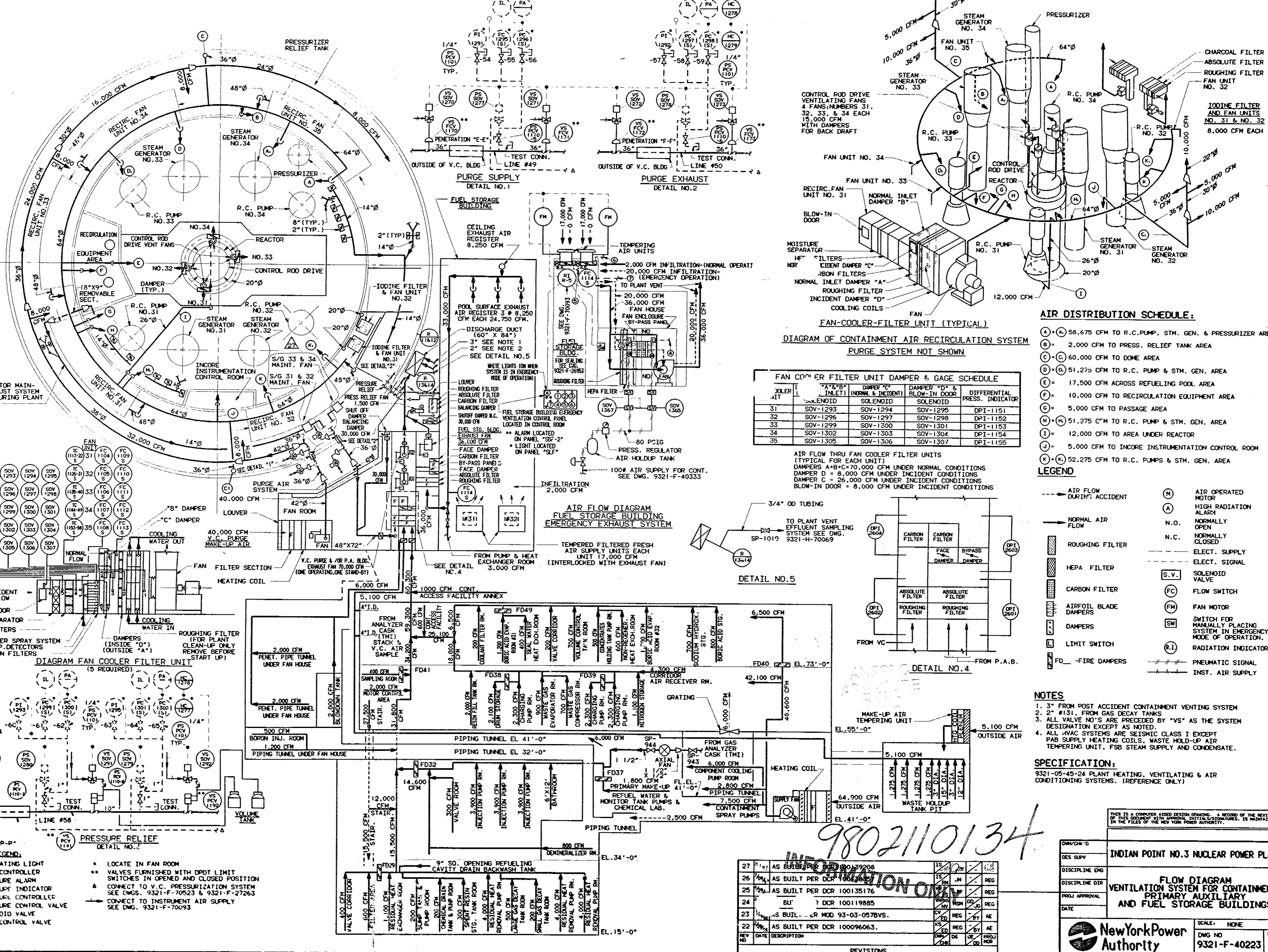


DIAGRAM OF CONTAINMENT AIR RECIRCULATION SYSTEM
PURGE SYSTEM NOT SHOWN

FAN UNIT	SOLENOID	DAMPER "A" (NORMAL & INCIDENT)	DAMPER "C" (NORMAL & INCIDENT)	DAMPER "D" & BLOW-IN DOOR SOLENOID	DIFFERENTIAL PRESS. INDICATOR
31	SOV-1293	SOV-1294	SOV-1295	DPT-1151	
32	SOV-1296	SOV-1297	SOV-1298	DPT-1152	
33	SOV-1299	SOV-1300	SOV-1301	DPT-1153	
34	SOV-1302	SOV-1303	SOV-1304	DPT-1154	
35	SOV-1305	SOV-1306	SOV-1307	DPT-1155	

- AIR DISTRIBUTION SCHEDULE:**
- (A) 58,675 CFM TO R.C. PUMP, STM. GEN. & PRESSURIZER AREA
 - (B) 2,000 CFM TO PRESS. RELIEF TANK AREA
 - (C) 6,000 CFM TO DOME AREA
 - (D) 51,275 CFM TO R.C. PUMP & STM. GEN. AREA
 - (E) 17,500 CFM ACROSS REFUELING POOL AREA
 - (F) 10,000 CFM TO RECIRCULATION EQUIPMENT AREA
 - (G) 5,000 CFM TO PASSAGE AREA
 - (H) 51,275 CFM TO R.C. PUMP & STM. GEN. AREA
 - (I) 12,000 CFM TO AREA UNDER REACTOR
 - (J) 5,000 CFM TO INCORE INSTRUMENTATION CONTROL ROOM
 - (K) 52,275 CFM TO R.C. PUMPS & STM. GEN. AREA
- LEGEND**
- AIR FLOW DURING ACCIDENT
 - NORMAL AIR FLOW
 - ROUGHING FILTER
 - HEPA FILTER
 - CARBON FILTER
 - AIRFOIL BLADE DAMPERS
 - DAMPERS
 - LIMIT SWITCH
 - FD - FIRE DAMPERS
 - (M) AIR OPERATED MOTOR
 - (A) HIGH RADIATION ALARM
 - N.O. NORMALLY OPEN
 - N.C. NORMALLY CLOSED
 - ELECT. SUPPLY
 - ELECT. SIGNAL
 - (S.V.) SOLENOID VALVE
 - (FC) FLOW SWITCH
 - (FM) FAN MOTOR
 - (SM) SWITCH FOR MANUALLY PLACING SYSTEM IN EMERGENCY MODE OF OPERATION
 - (R.I.) RADIATION INDICATOR
 - PNEUMATIC SIGNAL
 - INST. AIR SUPPLY

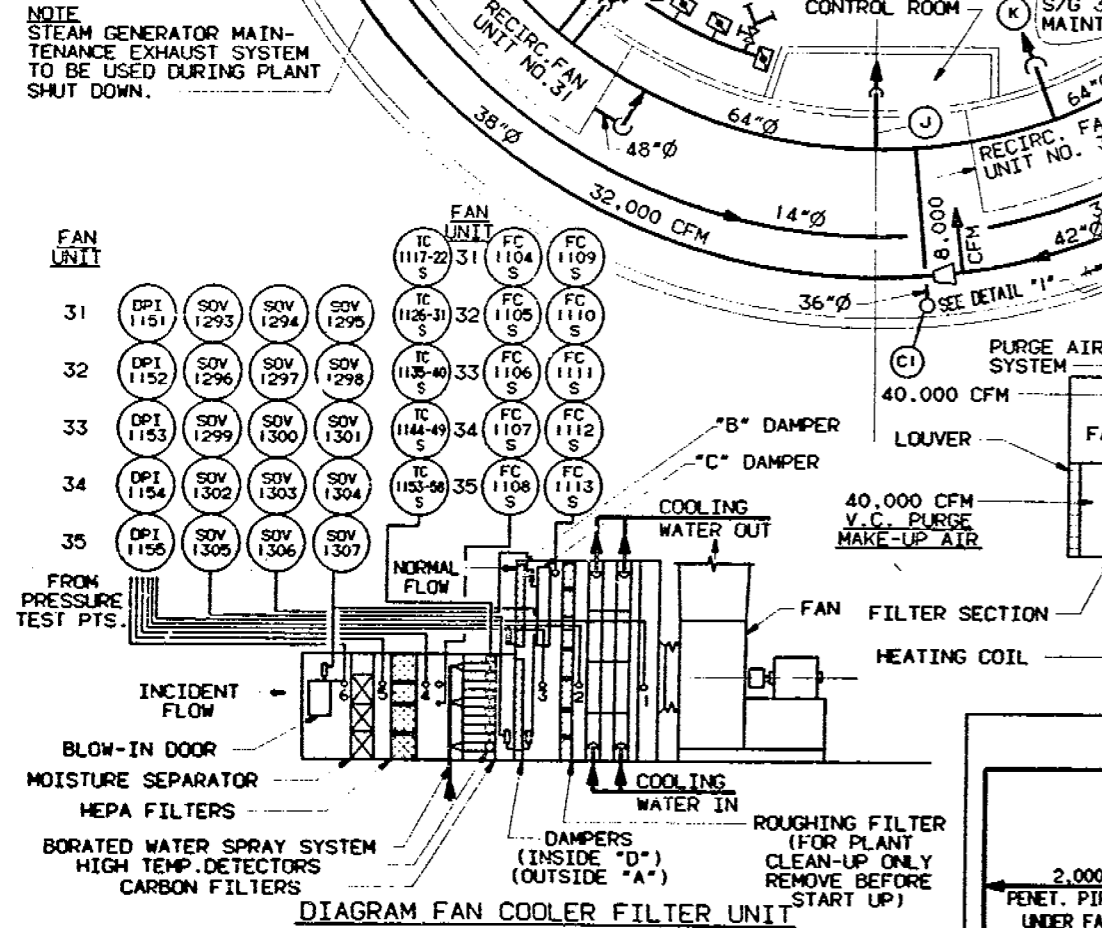
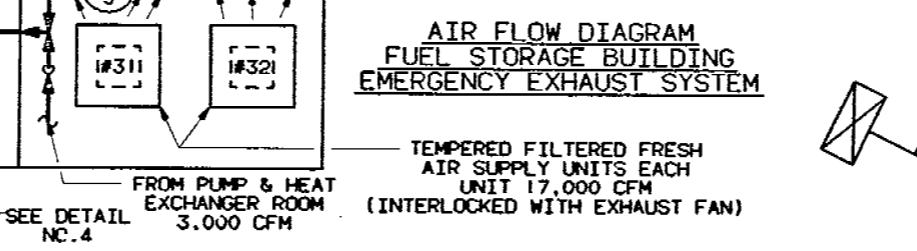
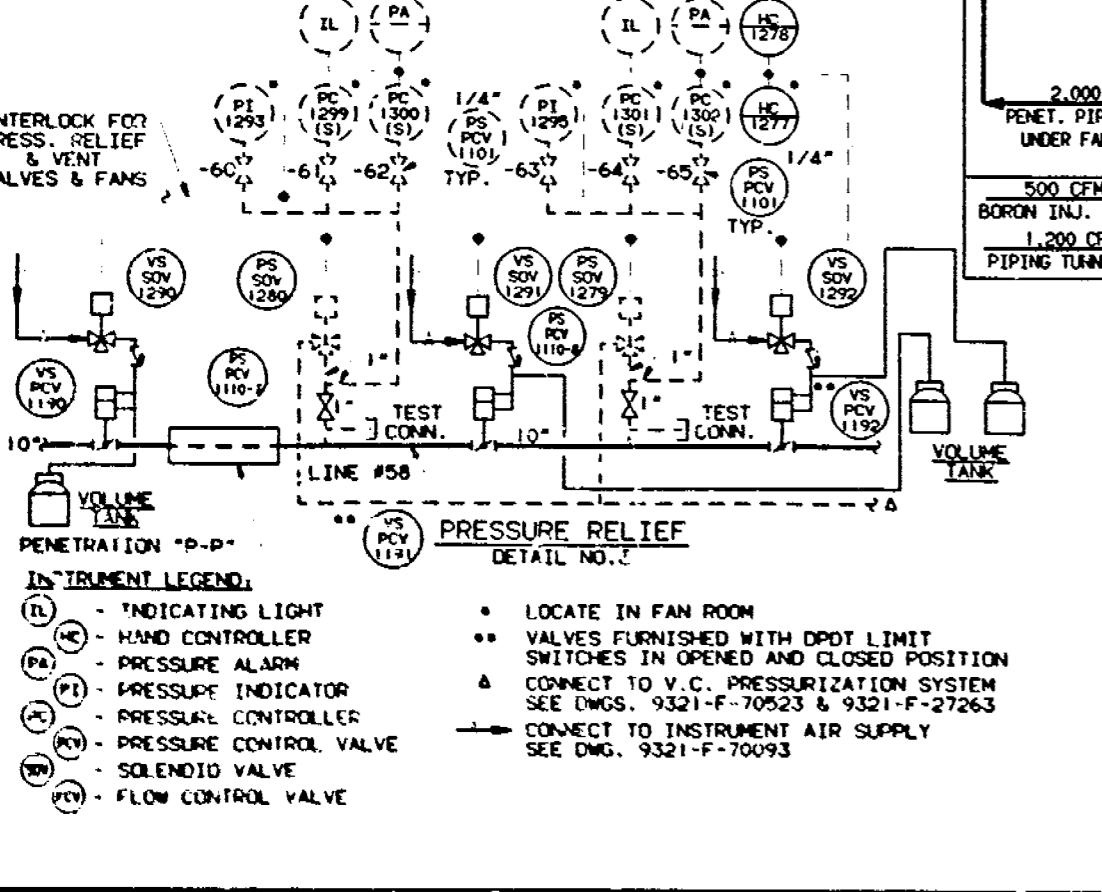
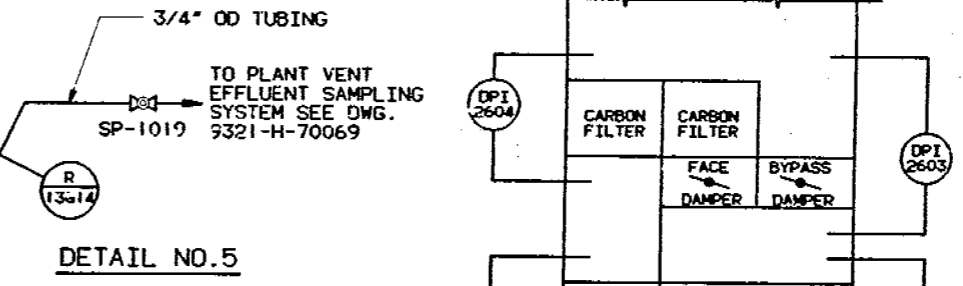


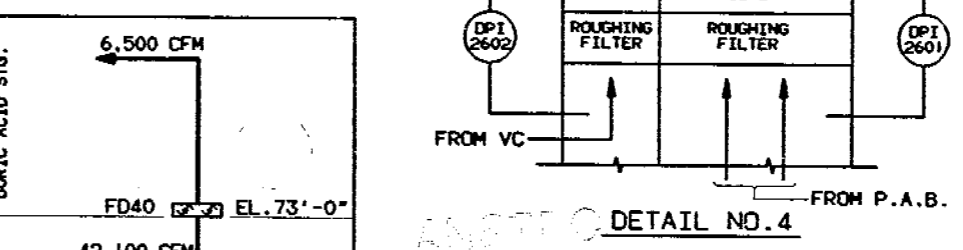
DIAGRAM FAN COOLER FILTER UNIT (5 REQUIRED)



AIR FLOW DIAGRAM FUEL STORAGE BUILDING EMERGENCY EXHAUST SYSTEM



DETAIL NO. 5



DETAIL NO. 4

- NOTES**
- 3" FROM POST ACCIDENT CONTAINMENT VENTING SYSTEM
 - 2" #131, FROM GAS DECAY TANKS
 - ALL VALVE NO'S ARE PRECEDED BY "VS" AS THE SYSTEM DESIGNATION EXCEPT AS NOTED.
 - ALL HVAC SYSTEMS ARE SEISMIC CLASS I EXCEPT PAB SUPPLY HEATING COILS, WASTE HOLD-UP AIR TEMPERING UNIT, FSB STEAM SUPPLY AND CONDENSATE.
- SPECIFICATION:**
9321-05-45-24 PLANT HEATING, VENTILATING & AIR CONDITIONING SYSTEMS. (REFERENCE ONLY)

9802110134

INFORMATION ONLY

NO.	DATE	DESCRIPTION	BY	CHKD	APP'D
27	10/17	AS BUILT PER DCR 100135176	SM	JM	REG
26	10/17	AS BUILT PER DCR 100135176	SM	JM	REG
25	10/17	AS BUILT PER DCR 100135176	SM	JM	REG
24	10/17	BU 1 DCR 100119885	SM	JM	REG
23	10/17	AS BUILT PER DCR MOD 93-03-0578VS.	SM	JM	REG
22	10/17	AS BUILT PER DCR 100096063.	SM	JM	REG

REVISIONS

INDIAN POINT NO.3 NUCLEAR POWER PLANT

**FLOW DIAGRAM
VENTILATION SYSTEM FOR CONTAINMENT,
PRIMARY AUXILIARY
AND FUEL STORAGE BUILDINGS**

New York Power Authority

DWG NO: 9321-F-40223
SCALE: NONE
SHEET

TYPE A/FC

9802110134