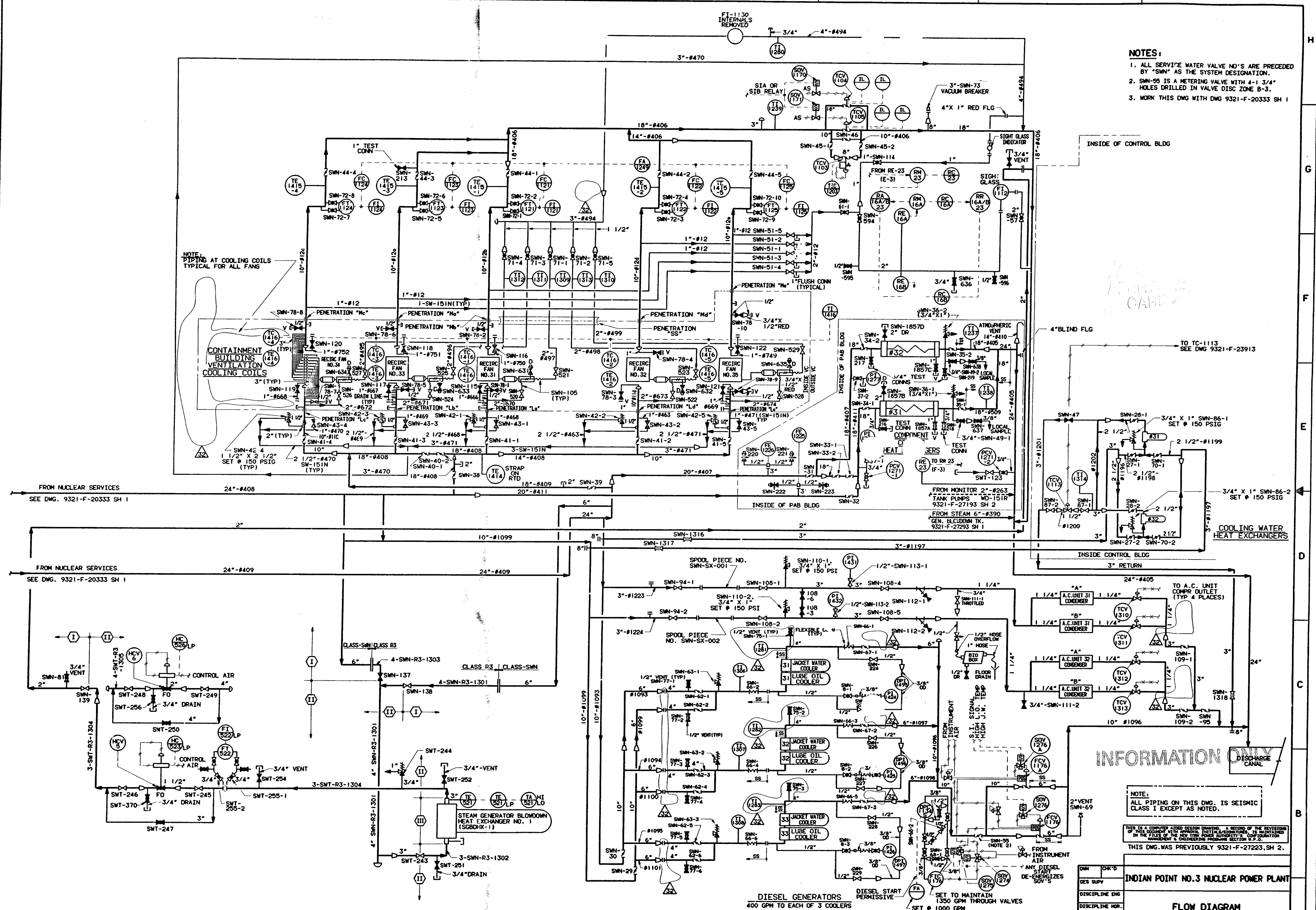


- NOTES:**
1. ALL SERVICE WATER VALVE NO'S ARE PRECEDED BY "SWV" AS THE SYSTEM DESIGNATION.
  2. SWV-55 IS A METERING VALVE WITH 4-1/4" HOLES DRILLED IN VALVE DISC ZONE B-3.
  3. WORK THIS DWG WITH DWG 9321-F-20333 SH 1

NOTE: PIPING AT COOLING COILS TYPICAL FOR ALL FANS



**INFORMATION ONLY**

NOTE: ALL PIPING ON THIS DWG. IS SEISMIC CLASS I EXCEPT AS NOTED.

THIS IS A COMPUTER AIDED DESIGN DRAWING. A RECORD OF THE REVISIONS OF THIS DOCUMENT WITH APPROVAL INITIALS/DATE/TIME, IS MAINTAINED IN THE FILES OF THE NEW YORK POWER AUTHORITY'S COMPUTERIZATION MANAGEMENT & ENGINEERING PROGRAMS SECTION U.P.O.

THIS DWG. WAS PREVIOUSLY 9321-F-27223, SH 2.

REV	DATE	DESCRIPTION	BY	CHK	APP	LEV	NO	DATE	DESCRIPTION
32	10/27/83	AS BUILT PER MOD 95-3-241 SWS AND MOD 95-3-303 SWS AND DCR 100139825	MS	MS	MS	30	1/1	10/27/83	AS BUILT PER MOD 95-3-241 SWS AND MOD 95-3-303 SWS AND DCR 100139825
31	08/23/83	AS BUILT PER DCR 100142336	MS	MS	MS	29	1/1	08/23/83	AS BUILT PER DCR 100142336
30	08/23/83	AS BUILT PER MOD 95-3-241 SWS AND MOD 95-3-304 SWS	MS	MS	MS	28	1/1	08/23/83	AS BUILT PER MOD 95-3-241 SWS AND MOD 95-3-304 SWS
29	08/23/83	AS BUILT PER MOD 95-3-241 SWS AND MOD 95-3-304 SWS	MS	MS	MS	27	1/1	08/23/83	AS BUILT PER MOD 95-3-241 SWS AND MOD 95-3-304 SWS
28	08/23/83	AS BUILT PER MOD 95-3-241 SWS AND MOD 95-3-304 SWS	MS	MS	MS	26	1/1	08/23/83	AS BUILT PER MOD 95-3-241 SWS AND MOD 95-3-304 SWS
27	08/23/83	AS BUILT PER DCR 100124342	MS	MS	MS	25	1/1	08/23/83	AS BUILT PER DCR 100124342
26	08/23/83	AS BUILT PER DCR 100109828 & 100116973	MS	MS	MS	24	1/1	08/23/83	AS BUILT PER DCR 100109828 & 100116973
25	08/23/83	AS BUILT PER MOD 94-03-210SWS	MS	MS	MS	23	1/1	08/23/83	AS BUILT PER MOD 94-03-210SWS

**INDIAN POINT NO.3 NUCLEAR POWER PLANT**

**FLOW DIAGRAM SERVICE WATER SYSTEM NUCLEAR STEAM SUPPLY PLANT**

SCALE: NONE

DWG NO: 9321-F-27223 32

REV: 32

**New York Power Authority**

9802110097