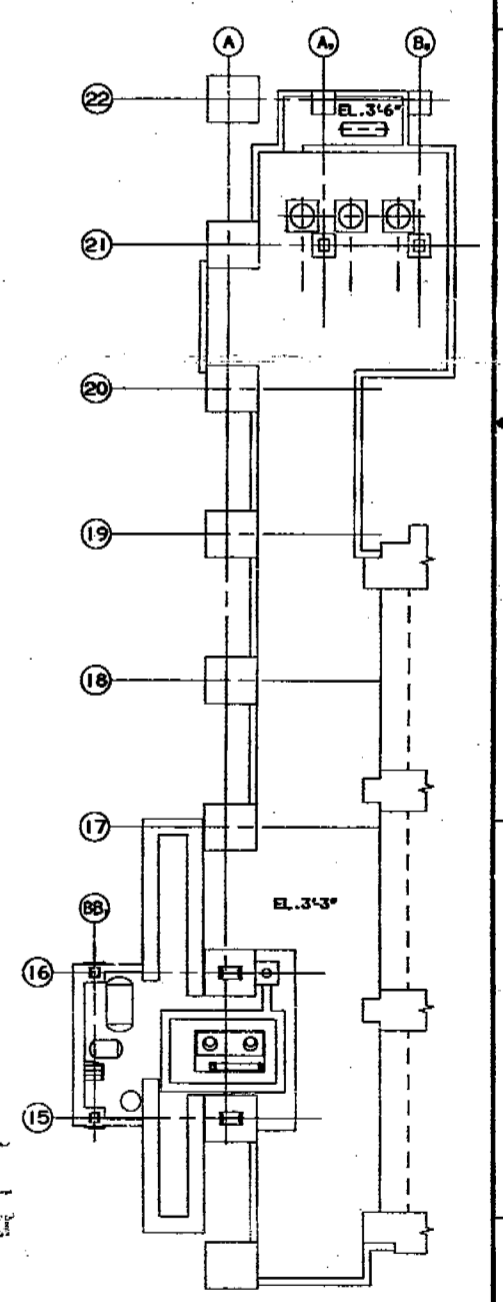
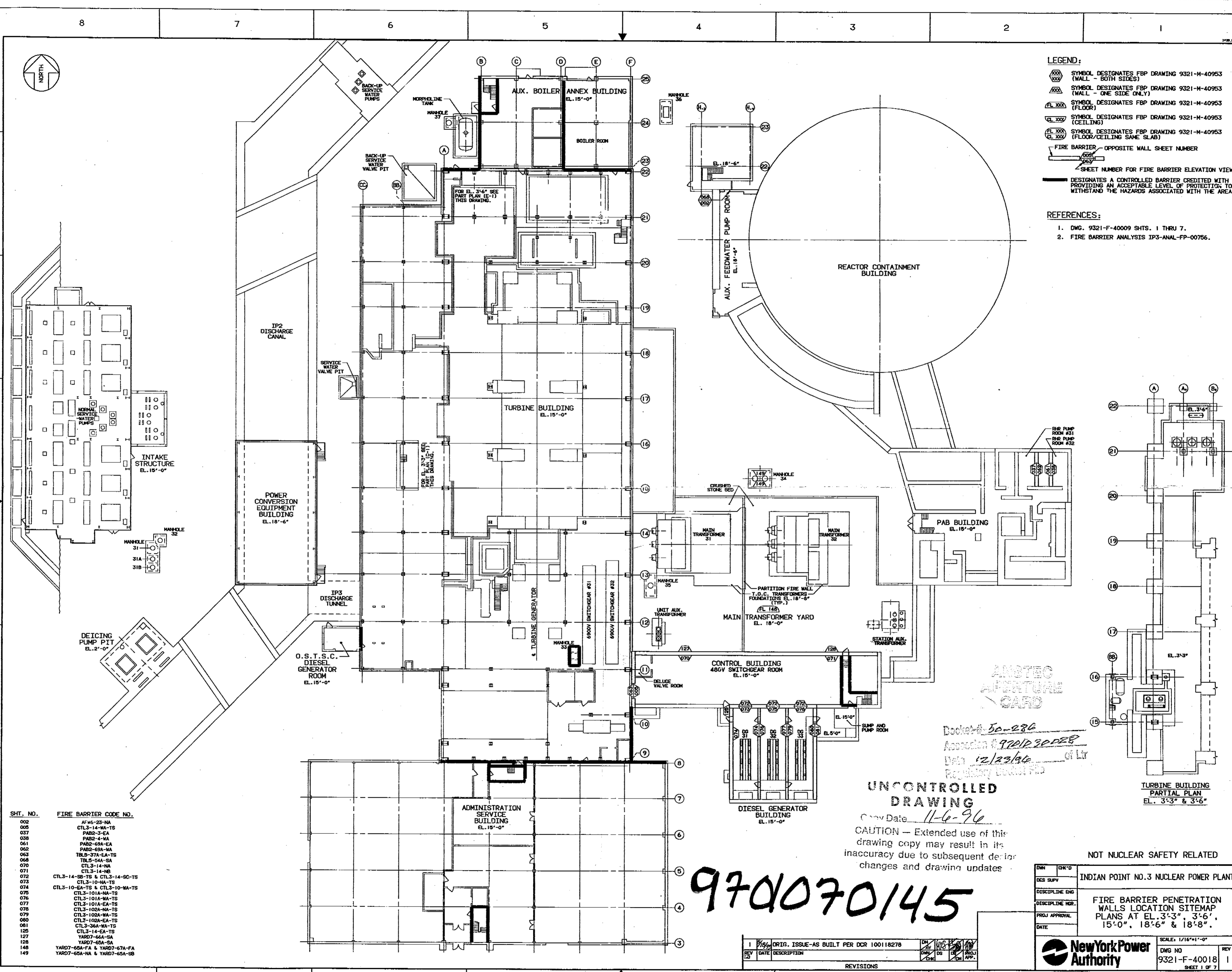


- LEGEND:**
- SYMBOL DESIGNATES FBP DRAWING 9321-M-40953 (WALL - BOTH SIDES)
 - SYMBOL DESIGNATES FBP DRAWING 9321-M-40953 (WALL - ONE SIDE ONLY)
 - SYMBOL DESIGNATES FBP DRAWING 9321-M-40953 (FLOOR)
 - SYMBOL DESIGNATES FBP DRAWING 9321-M-40953 (CEILING)
 - SYMBOL DESIGNATES FBP DRAWING 9321-M-40953 (FLOOR/CEILING SAME SLAB)
 - FIRE BARRIER - OPPOSITE WALL SHEET NUMBER
 - SHEET NUMBER FOR FIRE BARRIER ELEVATION VIEW
 - DESIGNATES A CONTROLLED BARRIER CREDITED WITH PROVIDING AN ACCEPTABLE LEVEL OF PROTECTION TO WITHSTAND THE HAZARDS ASSOCIATED WITH THE AREA.

- REFERENCES:**
1. DWG. 9321-F-40009 SHTS. 1 THRU 7.
 2. FIRE BARRIER ANALYSIS IP3-ANAL-FP-00756.



| SHT. NO. | FIRE BARRIER CODE NO. |
|----------|-------------------------------|
| 002 | AF46-23-NA |
| 005 | CTL3-14-MA-TS |
| 037 | PAB2-3-EA |
| 038 | PAB2-4-MA |
| 061 | PAB2-69A-EA |
| 062 | PAB2-69A-MA |
| 063 | TBL3-37A-EA-TS |
| 068 | TBL3-34A-TS |
| 070 | CTL3-14-NA |
| 071 | CTL3-14-NS |
| 072 | CTL3-14-SE-TS & CTL3-14-SC-TS |
| 073 | CTL3-10-NA-TS |
| 074 | CTL3-10-EA-TS & CTL3-10-MA-TS |
| 075 | CTL3-101A-MA-TS |
| 076 | CTL3-101A-NA-TS |
| 077 | CTL3-101A-EA-TS |
| 078 | CTL3-102A-MA-TS |
| 079 | CTL3-102A-NA-TS |
| 080 | CTL3-102A-EA-TS |
| 081 | CTL3-36A-MA-TS |
| 125 | CTL3-14-EA-TS |
| 127 | YARD7-66A-SA |
| 128 | YARD7-65A-SA |
| 148 | YARD7-65A-FA & YARD7-67A-FA |
| 149 | YARD7-65A-NA & YARD7-65A-SB |

UNCONTROLLED DRAWING
 Draw Date: 11-6-96
 CAUTION - Extended use of this drawing copy may result in its inaccuracy due to subsequent design changes and drawing updates.

9701070145

NOT NUCLEAR SAFETY RELATED

| | |
|----------------|--|
| DWG NO | INDIAN POINT NO.3 NUCLEAR POWER PLANT |
| DISCIPLINE ENG | FIRE BARRIER PENETRATION WALLS LOCATION SITEMAP PLANS AT EL. 3'-3", 3'-6", 15'-0", 18'-6" & 18'-8" |
| PROJ APPROVAL | |
| DATE | |

SCALE: 1/16"=1'-0"

| | |
|--------|--------------|
| DWG NO | 9321-F-40018 |
| SHEET | 1 OF 7 |

New York Power Authority

| REV | DATE | DESCRIPTION | BY | CHKD | APP'D |
|-----|---------|--|----|------|-------|
| 1 | 1/29/96 | ORIG. ISSUE-AS BUILT PER DCR 100118278 | | | |

9701070145