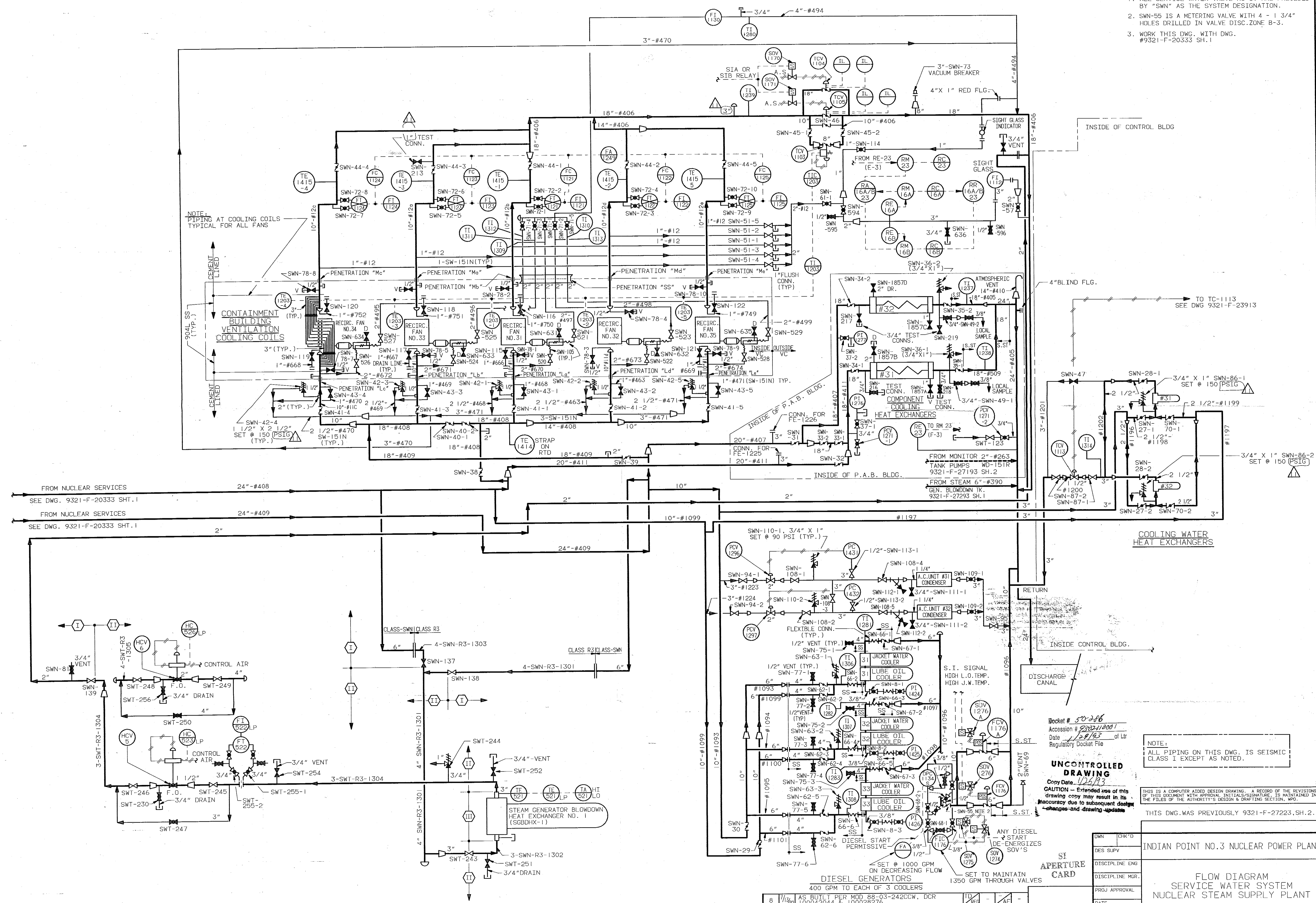


- NOTES:
1. ALL SERVICE WATER VALVE NO.'S. ARE PRECEDED BY "SWN" AS THE SYSTEM DESIGNATION.
  2. SWN-55 IS A METERING VALVE WITH 4 - 1 3/4" HOLES DRILLED IN VALVE DISC. ZONE B-3.
  3. WORK THIS DWG. WITH DWG. #9321-F-20333 SH.1



Bucket # 50286  
 Accession # 20011001  
 Date 12/8/83 of Ltr  
 Regulatory Docket File

**UNCONTROLLED DRAWING**  
 Copy Date: 12/21/83  
 Caution - Extended use of this drawing copy may result in its inaccuracy due to subsequent design changes and drawing updates.

NOTE:  
 ALL PIPING ON THIS DWG. IS SEISMIC CLASS I EXCEPT AS NOTED.

THIS DWG. WAS PREVIOUSLY 9321-F-27223, SH. 2.

INDIAN POINT NO. 3 NUCLEAR POWER PLANT

FLOW DIAGRAM  
 SERVICE WATER SYSTEM  
 NUCLEAR STEAM SUPPLY PLANT

NO.	DATE	DESCRIPTION	BY	CHKD.	APP.
8	1/13/82	AS BUILT PER DCR 88-03-242CCW, DCR 100042044 & 100028276.	TD	REC	AE
7	2/4/82	AS BUILT PER IP3 TECH. SERV. #D&D-104M.	TD	REC	AE
6	9/28/80	AS BUILT PER IP3 TECH. SERV. #D&D-40.	TD	REC	AE
11	10/12/82	AS BUILT PER DCR 100066060, 100066063 & 100066067.	TD	REC	AE
10	9/28/80	AS BUILT PER DCR 100064080.	TD	REC	AE
9	8/18/80	AS BUILT PER MOD 89-03-226SWS & 90-03-290RMS.	TD	REC	AE

New York Power Authority

SCALE: NONE  
 DWG NO: 9321-F-27223  
 SHEET: 11

9302180154 AP-12/ISI-FSAR