

DRAWING NUMBER

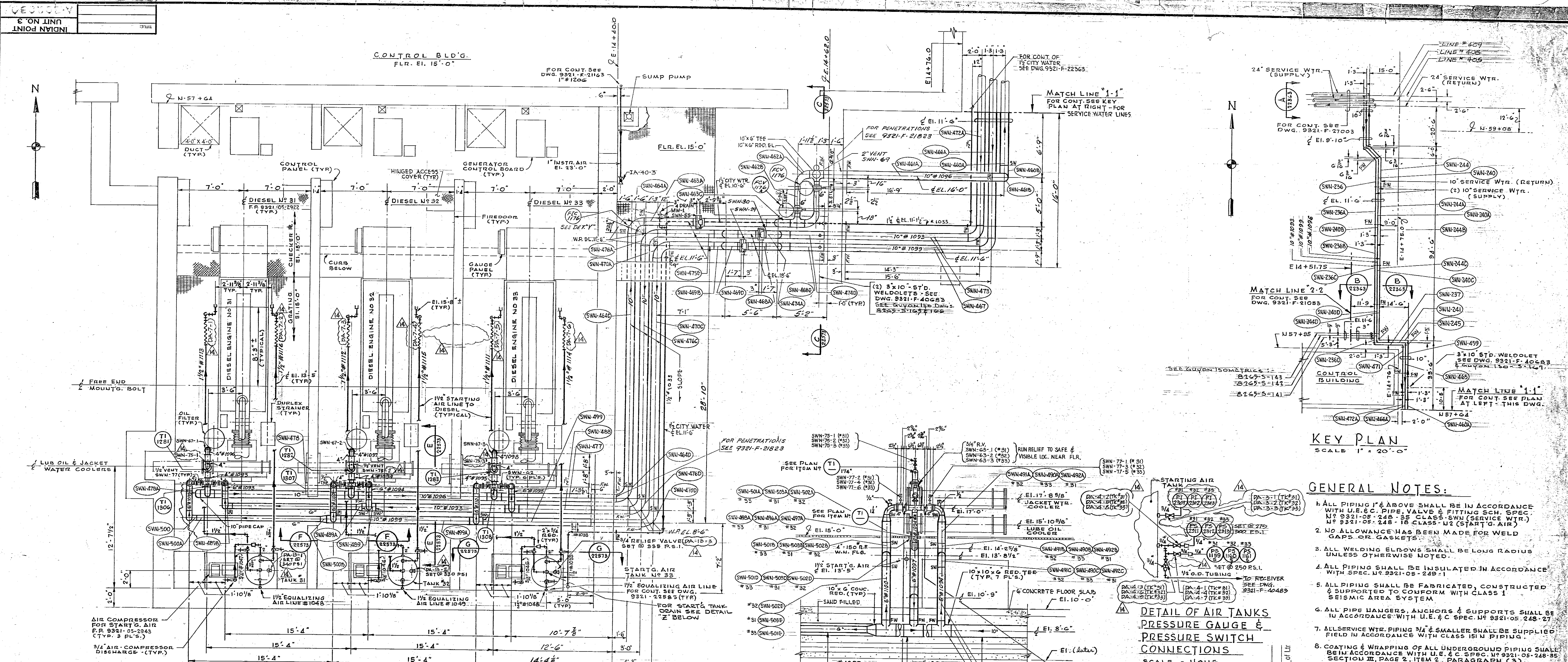
DRAWING NUMBER

DRAWING NUMBER

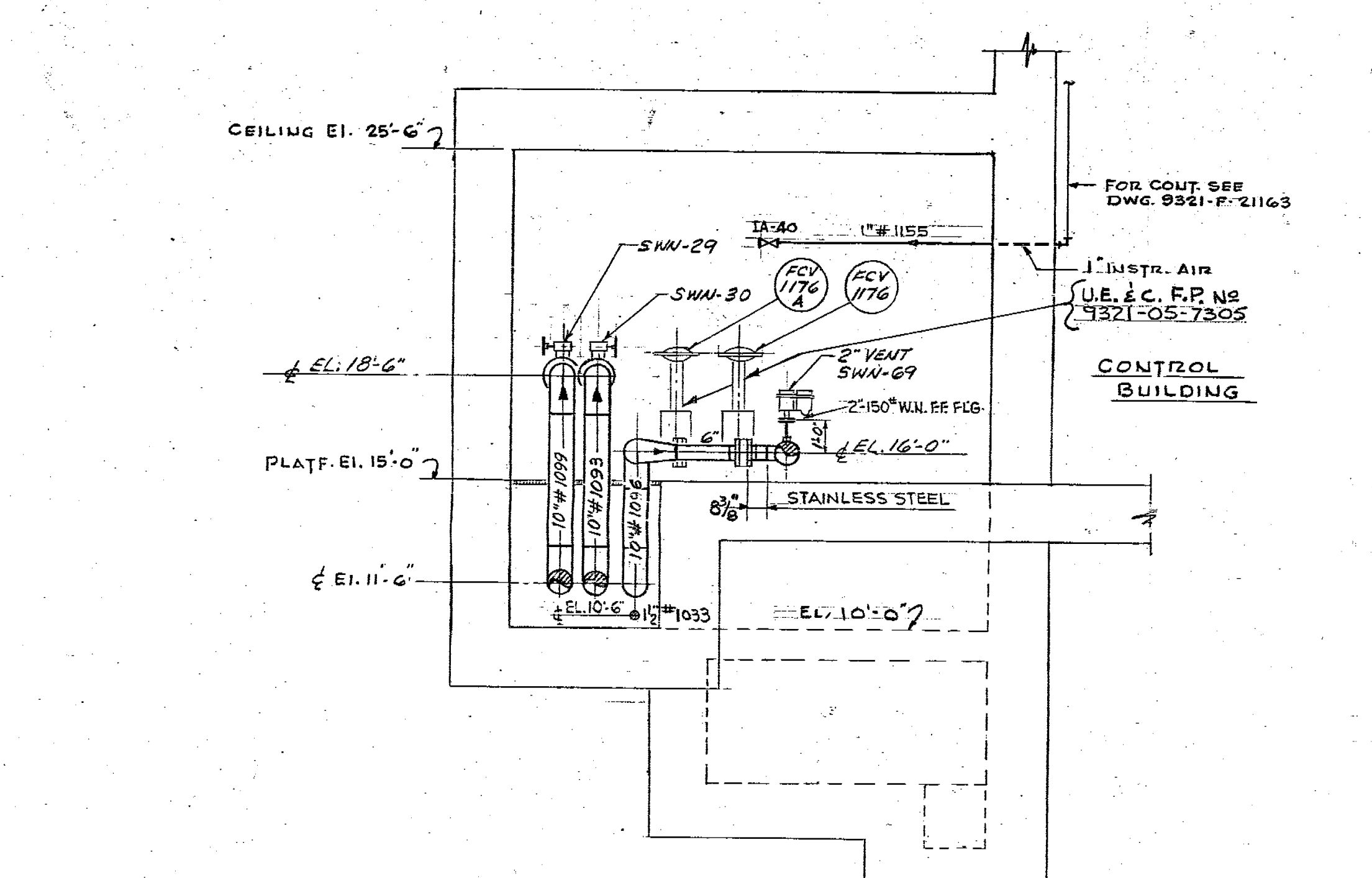
DRAWING NUMBER

DRAWING NUMBER
UE & C

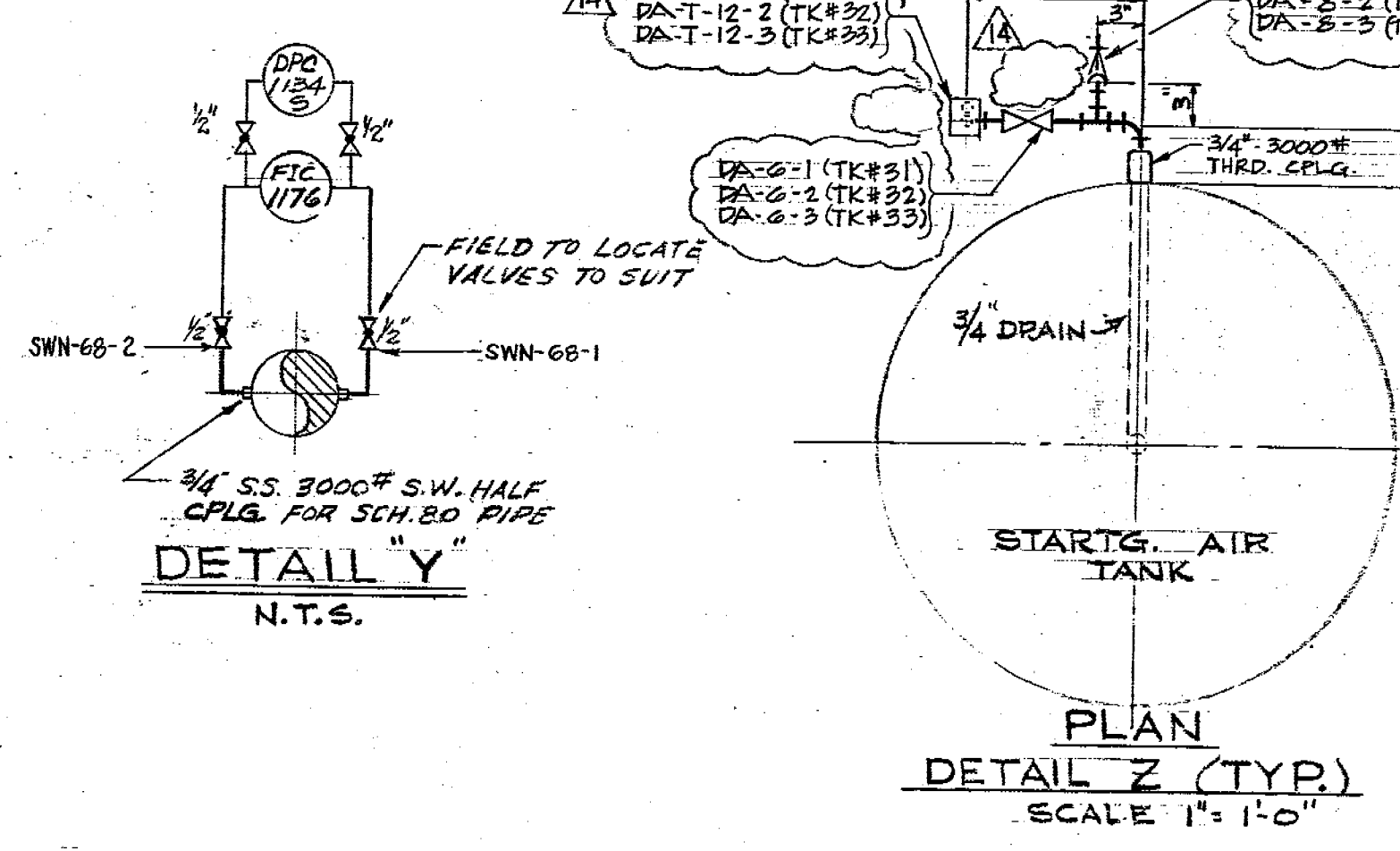
DRAWING NUMBER
9321-F-22573



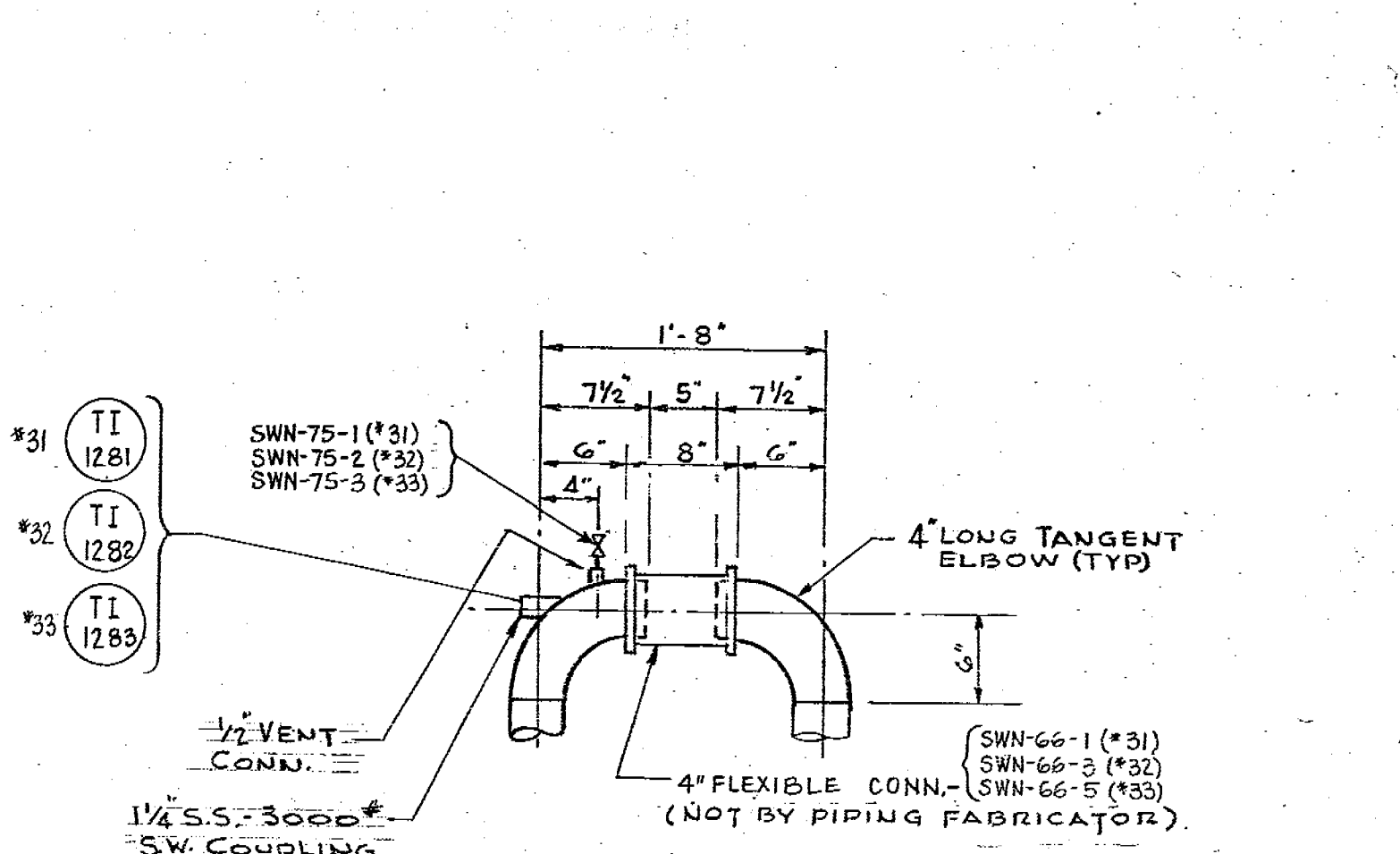
PLAN VIEW @ ELEV. 15'-0"
SCALE 1/4" = 1'-0"



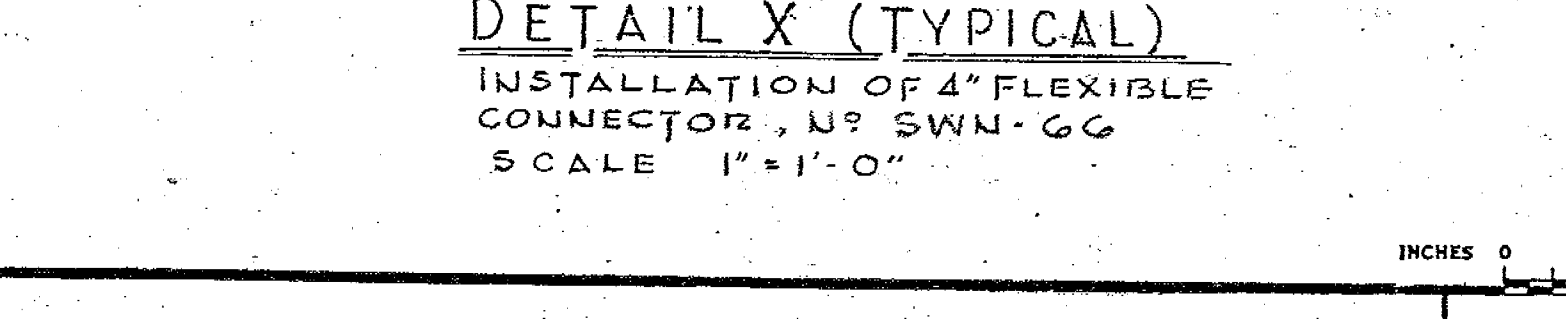
SECTION C-C



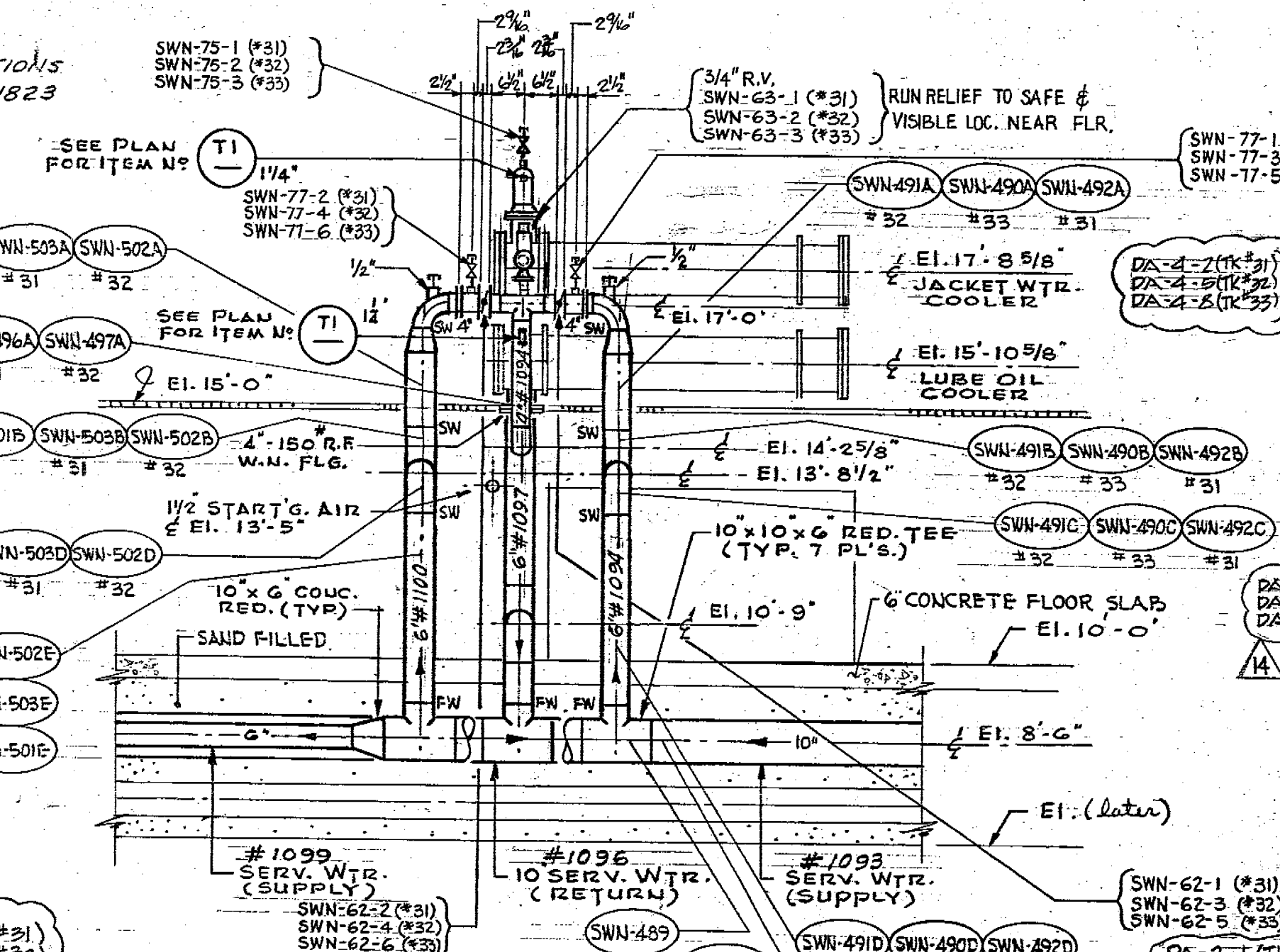
DETAIL Y
N.T.S.



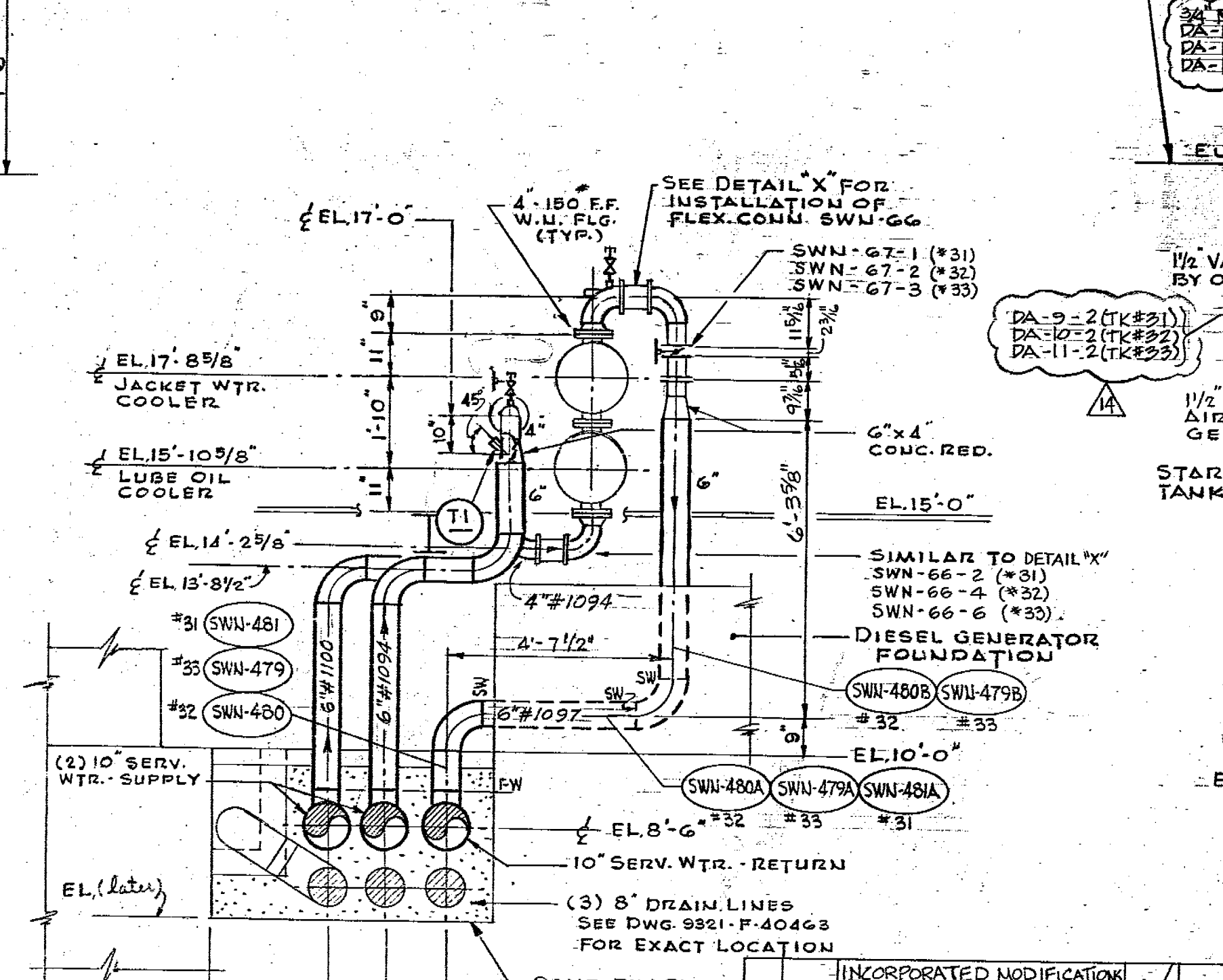
DETAIL Z (TYP)
SCALE 1" = 1'-0"



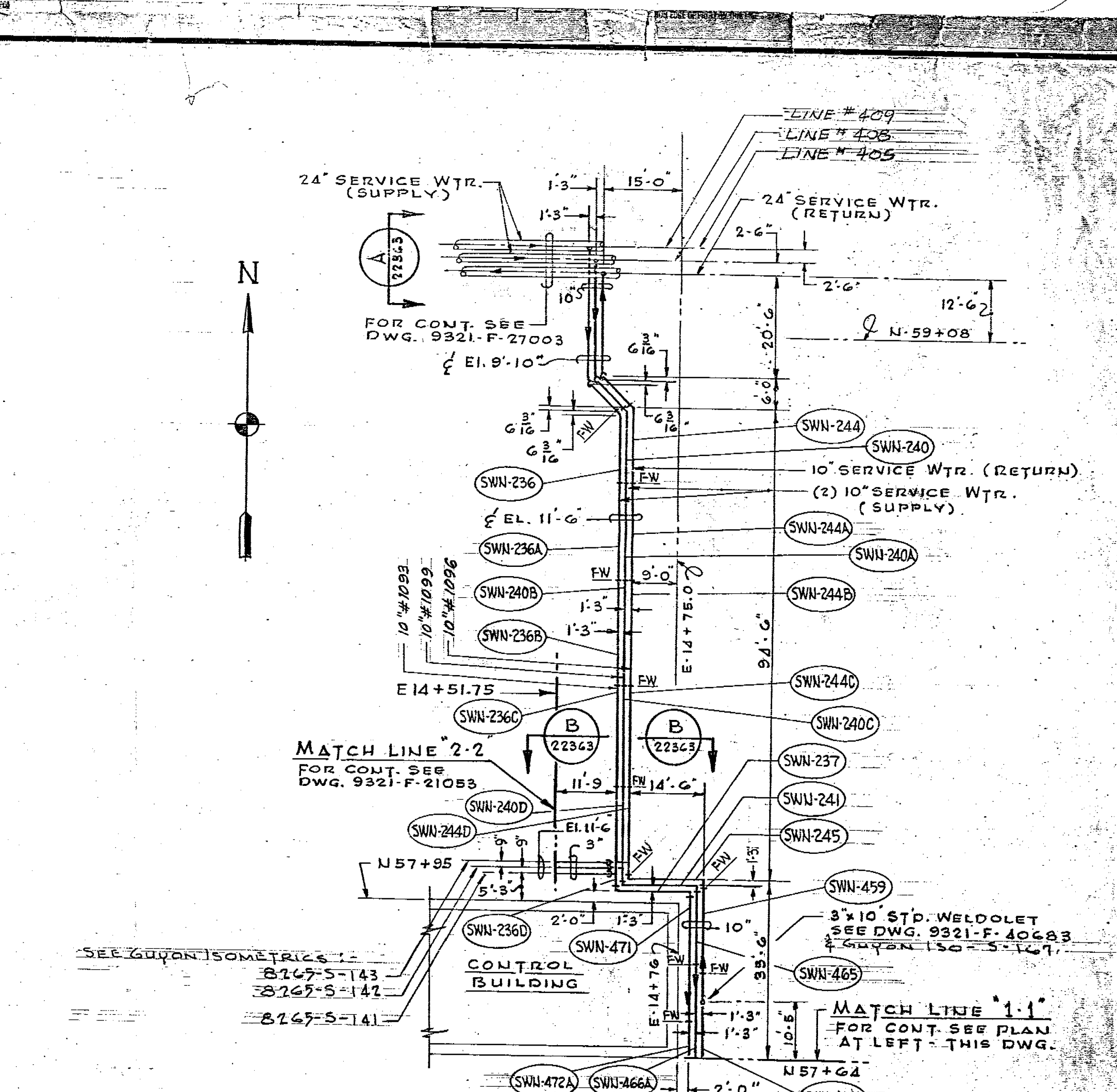
DETAIL X (TYPICAL)
SCALE 1" = 1'-0"



SECTION F-F
TYPICAL FOR ALL DIESEL GENERATORS
(EXCEPT FOR LINE NOS.)
SCALE 3/8" = 1'-0"



SECTION G-G
TYPICAL FOR DIESEL GENERATORS 32-63
SCALE 3/8" = 1'-0"



KEY PLAN
SCALE 1" = 20'-0"

GENERAL NOTES:

1. ALL PIPING 1" & ABOVE SHALL BE IN ACCORDANCE WITH U.E. & C. PIPE, VALVE & FITTING SCH. SPEC. U.E. 9321-05-248-55 CLASS-SW (SERVICE WTR.) U.E. 9321-05-248-18 CLASS-U2 (START'G. AIR)
2. NO ALLOWANCE HAS BEEN MADE FOR WELD GAPS OR GASKETS.
3. ALL WELDING ELBOWS SHALL BE LONG RADIUS UNLESS OTHERWISE NOTED.
4. ALL PIPING SHALL BE INSULATED IN ACCORDANCE WITH SPEC. U.E. 9321-05-249-1
5. ALL PIPING SHALL BE FABRICATED, CONSTRUCTED & SUPPORTED TO CONFORM WITH CLASS 1 SEISMIC AREA SYSTEM.
6. ALL PIPE HANGERS, ANCHORS & SUPPORTS SHALL BE IN ACCORDANCE WITH U.E. & C. SPEC. U.E. 9321-05-248-27
7. ALL SERVICE WTR. PIPING 3/4" & SMALLER SHALL BE SUPPLIED FIELD IN ACCORDANCE WITH CLASS 15 IN PIPING.
8. COATING & WRAPPING OF ALL UNDERGROUND PIPING SHALL BE IN ACCORDANCE WITH U.E. & C. SPEC. U.E. 9321-05-248-55 SECTION III, PAGE 2, ITEM 2, PARAGRAPH (3)
9. ALL PIPING 2 1/2" & SMALLER SHALL BE FIELD RUN, BUT SHALL NOT INFRINGE ON HEAD ROOM OR ANGLES. VALVES SHALL BE LOCATED FOR EASY ACCESS.

REFERENCE DRAWINGS:

- 9321-F-27223 FLOW DIAGRAM, SERVICE WTR. SYSTEM
- F-21053 CONTR. BLD'G. SERV. & COOL'G. WTR. PIPING
- F-21163 CONTR. BLD'G. INSTR. AIR PIPING
- F-22503 D.G. BLD'G. GENERAL ARR'G'TS. - PLAN
- F-22513 D.G. BLD'G. GENERAL ARR'G'TS. - SECTIONS
- F-22543 COMPOSITE PIPING - UNDERGROUND
- F-22583 D.G. BLD'G. FUEL OIL, START'G. AIR & JACKET WTR. SERVICE WTR. PIPING IN YARD AREA
- F-10003 D.G. BLD'G. FOUNDATION PLAN & DETAILS
- F-10563 D.G. BLD'G. DRAINAGE & VENTS
- 9321-F-40443 FLOW DIAGRAM, START'G. AIR TO DIESEL GEN'S
- 9321-F-40453 CONTROL BLD'G. - COOL'G. WTR. STM. & COND.
- 9321-F-21053 CONTR. BLD'G. - SLEEVE DRAWING
- CONVENTIONAL LINE SCHEDULE - CLASS 1 PIPING

FOREIGN PRINTS:

- 9321-05-2922 DIESEL GENERATOR OUTLINE DIMENSIONS
- 7305 6" BUTTERFLY CONTROL VA. (FCV-117C-1176A)
- 2042 4" FLEXIBLE CONNECTOR (SWN-GC)
- 2652 2" AIR RELEASE & INLET VA. (SWN-G9)
- 7975 3/4" SAFETY RELIEF VA. (SWN-G3)
- 9321-05-2938 STARTING AIR TANK
- 9321-05-2943 AIR COMPRESSOR FOR START'G. AIR
- 9321-05-2009B PIPING SCHEMATIC - STARTING AIR (ALCO)
- 9321-05-2009A JACKET WATER COOLERS
- 9321-05-20142 FLEX. CONNS.

UNCONTROLLED DRAWING

Copy Date: 1/26/93
CAUTION - Extended use of this drawing copy may result in its inaccuracy due to subsequent design changes and drawing updates.

SI APERTURE CARD

WESTINGHOUSE ELECTRIC CORPORATION

**DIESEL GENERATOR BUILDING
SERVICE WATER &
STARTING AIR PIPING**

FOR
CONSOLIDATED EDISON COMPANY
INDIAN POINT GENERATING STATION
UNIT NO. 3

U. E. & C. DWG. NO. **9321-F-22573-14** CON. ED. CO. DWG. NO. **A 202030**

NO.	DATE	DESCRIPTION	ENR.	BY	CHKD.
10	11/10/88	INCORPORATED MODIFICATION PER MOD. 84-3-024 SWN MOD. 85-05-105 SWN, MOD. 86-05-015 SWN, MOD. 104, 105, 106, 107, 108			
11	11/10/88	DELETED DETAIL "A", REV'D PER MOD 81-03-041 SWN, ADDED STAINLESS STEEL SPOOL PIECE ON LINE 104			
12	11/10/88	FINAL ISSUE			
13	11/10/88	SWN-445, 285 & 284 MOD SWN-452, 255 & 254 MOD SWN-453, 255 & 254 MOD SWN-454, 255 & 254 MOD SWN-455, 255 & 254 MOD SWN-456, 255 & 254 MOD SWN-457, 255 & 254 MOD SWN-458, 255 & 254 MOD SWN-459, 255 & 254 MOD SWN-460, 255 & 254 MOD SWN-461, 255 & 254 MOD SWN-462, 255 & 254 MOD SWN-463, 255 & 254 MOD SWN-464, 255 & 254 MOD SWN-465, 255 & 254 MOD SWN-466, 255 & 254 MOD SWN-467, 255 & 254 MOD SWN-468, 255 & 254 MOD SWN-469, 255 & 254 MOD SWN-470, 255 & 254 MOD SWN-471, 255 & 254 MOD SWN-472, 255 & 254 MOD SWN-473, 255 & 254 MOD SWN-474, 255 & 254 MOD SWN-475, 255 & 254 MOD SWN-476, 255 & 254 MOD SWN-477, 255 & 254 MOD SWN-478, 255 & 254 MOD SWN-479, 255 & 254 MOD SWN-480, 255 & 254 MOD SWN-481, 255 & 254 MOD SWN-482, 255 & 254 MOD SWN-483, 255 & 254 MOD SWN-484, 255 & 254 MOD SWN-485, 255 & 254 MOD SWN-486, 255 & 254 MOD SWN-487, 255 & 254 MOD SWN-488, 255 & 254 MOD SWN-489, 255 & 254 MOD SWN-490, 255 & 254 MOD SWN-491, 255 & 254 MOD SWN-492, 255 & 254 MOD SWN-493, 255 & 254 MOD SWN-494, 255 & 254 MOD SWN-495, 255 & 254 MOD SWN-496, 255 & 254 MOD SWN-497, 255 & 254 MOD SWN-498, 255 & 254 MOD SWN-499, 255 & 254 MOD SWN-500, 255 & 254 MOD SWN-501, 255 & 254 MOD SWN-502, 255 & 254 MOD SWN-503, 255 & 254 MOD SWN-504, 255 & 254 MOD SWN-505, 255 & 254 MOD SWN-506, 255 & 254 MOD SWN-507, 255 & 254 MOD SWN-508, 255 & 254 MOD SWN-509, 255 & 254 MOD SWN-510, 255 & 254 MOD SWN-511, 255 & 254 MOD SWN-512, 255 & 254 MOD SWN-513, 255 & 254 MOD SWN-514, 255 & 254 MOD SWN-515, 255 & 254 MOD SWN-516, 255 & 254 MOD SWN-517, 255 & 254 MOD SWN-518, 255 & 254 MOD SWN-519, 255 & 254 MOD SWN-520, 255 & 254 MOD SWN-521, 255 & 254 MOD SWN-522, 255 & 254 MOD SWN-523, 255 & 254 MOD SWN-524, 255 & 254 MOD SWN-525, 255 & 254 MOD SWN-526, 255 & 254 MOD SWN-527, 255 & 254 MOD SWN-528, 255 & 254 MOD SWN-529, 255 & 254 MOD SWN-530, 255 & 254 MOD SWN-531, 255 & 254 MOD SWN-532, 255 & 254 MOD SWN-533, 255 & 254 MOD SWN-534, 255 & 254 MOD SWN-535, 255 & 254 MOD SWN-536, 255 & 254 MOD SWN-537, 255 & 254 MOD SWN-538, 255 & 254 MOD SWN-539, 255 & 254 MOD SWN-540, 255 & 254 MOD SWN-541, 255 & 254 MOD SWN-542, 255 & 254 MOD SWN-543, 255 & 254 MOD SWN-544, 255 & 254 MOD SWN-545, 255 & 254 MOD SWN-546, 255 & 254 MOD SWN-547, 255 & 254 MOD SWN-548, 255 & 254 MOD SWN-549, 255 & 254 MOD SWN-550, 255 & 254 MOD SWN-551, 255 & 254 MOD SWN-552, 255 & 254 MOD SWN-553, 255 & 254 MOD SWN-554, 255 & 254 MOD SWN-555, 255 & 254 MOD SWN-556, 255 & 254 MOD SWN-557, 255 & 254 MOD SWN-558, 255 & 254 MOD SWN-559, 255 & 254 MOD SWN-560, 255 & 254 MOD SWN-561, 255 & 254 MOD SWN-562, 255 & 254 MOD SWN-563, 255 & 254 MOD SWN-564, 255 & 254 MOD SWN-565, 255 & 254 MOD SWN-566, 255 & 254 MOD SWN-567, 255 & 254 MOD SWN-568, 255 & 254 MOD SWN-569, 255 & 254 MOD SWN-570, 255 & 254 MOD SWN-571, 255 & 254 MOD SWN-572, 255 & 254 MOD SWN-573, 255 & 254 MOD SWN-574, 255 & 254 MOD SWN-575, 255 & 254 MOD SWN-576, 255 & 254 MOD SWN-577, 255 & 254 MOD SWN-578, 255 & 254 MOD SWN-579, 255 & 254 MOD SWN-580, 255 & 254 MOD SWN-581, 255 & 254 MOD SWN-582, 255 & 254 MOD SWN-583, 255 & 254 MOD SWN-584, 255 & 254 MOD SWN-585, 255 & 254 MOD SWN-586, 255 & 254 MOD SWN-587, 255 & 254 MOD SWN-588, 255 & 254 MOD SWN-589, 255 & 254 MOD SWN-590, 255 & 254 MOD SWN-591, 255 & 254 MOD SWN-592, 255 & 254 MOD SWN-593, 255 & 254 MOD SWN-594, 255 & 254 MOD SWN-595, 255 & 254 MOD SWN-596, 255 & 254 MOD SWN-597, 255 & 254 MOD SWN-598, 255 & 254 MOD SWN-599, 255 & 254 MOD SWN-600, 255 & 254 MOD SWN-601, 255 & 254 MOD SWN-602, 255 & 254 MOD SWN-603, 255 & 254 MOD SWN-604, 255 & 254 MOD SWN-605, 255 & 254 MOD SWN-606, 255 & 254 MOD SWN-607, 255 & 254 MOD SWN-608, 255 & 254 MOD SWN-609, 255 & 254 MOD SWN-610, 255 & 254 MOD SWN-611, 255 & 254 MOD SWN-612, 255 & 254 MOD SWN-613, 255 & 254 MOD SWN-614, 255 & 254 MOD SWN-615, 255 & 254 MOD SWN-616, 255 & 254 MOD SWN-617, 255 & 254 MOD SWN-618, 255 & 254 MOD SWN-619, 255 & 254 MOD SWN-620, 255 & 254 MOD SWN-621, 255 & 254 MOD SWN-622, 255 & 254 MOD SWN-623, 255 & 254 MOD SWN-624, 255 & 254 MOD SWN-625, 255 & 254 MOD SWN-626, 255 & 254 MOD SWN-627, 255 & 254 MOD SWN-628, 255 & 254 MOD SWN-629, 255 & 254 MOD SWN-630, 255 & 254 MOD SWN-631, 255 & 254 MOD SWN-632, 255 & 254 MOD SWN-633, 255 & 254 MOD SWN-634, 255 & 254 MOD SWN-635, 255 & 254 MOD SWN-636, 255 & 254 MOD SWN-637, 255 & 254 MOD SWN-638, 255 & 254 MOD SWN-639, 255 & 254 MOD SWN-640, 255 & 254 MOD SWN-641, 255 & 254 MOD SWN-642, 255 & 254 MOD SWN-643, 255 & 254 MOD SWN-644, 255 & 254 MOD SWN-645, 255 & 254 MOD SWN-646, 255 & 254 MOD SWN-647, 255 & 254 MOD SWN-648, 255 & 254 MOD SWN-649, 255 & 254 MOD SWN-650, 255 & 254 MOD SWN-651, 255 & 254 MOD SWN-652, 255 & 254 MOD SWN-653, 255 & 254 MOD SWN-654, 255 & 254 MOD SWN-655, 255 & 254 MOD SWN-656, 255 & 254 MOD SWN-657, 255 & 254 MOD SWN-658, 255 & 254 MOD SWN-659, 255 & 254 MOD SWN-660, 255 & 254 MOD SWN-661, 255 & 254 MOD SWN-662, 255 & 254 MOD SWN-663, 255 & 254 MOD SWN-664, 255 & 254 MOD SWN-665, 255 & 254 MOD SWN-666, 255 & 254 MOD SWN-667, 255 & 254 MOD SWN-668, 255 & 254 MOD SWN-669, 255 & 254 MOD SWN-670, 255 & 254 MOD SWN-671, 255 & 254 MOD SWN-672, 255 & 254 MOD SWN-673, 255 & 254 MOD SWN-674, 255 & 254 MOD SWN-675, 255 & 254 MOD SWN-676, 255 & 254 MOD SWN-677, 255 & 254 MOD SWN-678, 255 & 254 MOD SWN-679, 255 & 254 MOD SWN-680, 255 & 254 MOD SWN-681, 255 & 254 MOD SWN-682, 255 & 254 MOD SWN-683, 255 & 254 MOD SWN-684, 255 & 254 MOD SWN-685, 255 & 254 MOD SWN-686, 255 & 254 MOD SWN-687, 255 & 254 MOD SWN-688, 255 & 254 MOD SWN-689, 255 & 254 MOD SWN-690, 255 & 254 MOD SWN-691, 255 & 254 MOD SWN-692, 255 & 254 MOD SWN-693, 255 & 254 MOD SWN-694, 255 & 254 MOD SWN-695, 255 & 254 MOD SWN-696, 255 & 254 MOD SWN-697, 255 & 254 MOD SWN-698, 255 & 254 MOD SWN-699, 255 & 254 MOD SWN-700, 255 & 254 MOD SWN-701, 255 & 254 MOD SWN-702, 255 & 254 MOD SWN-703, 255 & 254 MOD SWN-704, 255 & 254 MOD SWN-705, 255 & 254 MOD SWN-706, 255 & 254 MOD SWN-707, 255 & 254 MOD SWN-708, 255 & 254 MOD SWN-709, 255 & 254 MOD SWN-710, 255 & 254 MOD SWN-711, 255 & 254 MOD SWN-712, 255 & 254 MOD SWN-713, 255 & 254 MOD SWN-714, 255 & 254 MOD SWN-715, 255 & 254 MOD SWN-716, 255 & 254 MOD SWN-717, 255 & 254 MOD SWN-718, 255 & 254 MOD SWN-719, 255 & 254 MOD SWN-720, 255 & 254 MOD SWN-721, 255 & 254 MOD SWN-722, 255 & 254 MOD SWN-723, 255 & 254 MOD SWN-724, 255 & 254 MOD SWN-725, 255 & 254 MOD SWN-726, 255 & 254 MOD SWN-727, 255 & 254 MOD SWN-728, 255 & 254 MOD SWN-729, 255 & 254 MOD SWN-730, 255 & 254 MOD SWN-731, 255 & 254 MOD SWN-732, 255 & 254 MOD SWN-733, 255 & 254 MOD SWN-734, 255 & 254 MOD SWN-735, 255 & 254 MOD SWN-736, 255 & 254 MOD SWN-737, 255 & 254 MOD SWN-738, 255 & 254 MOD SWN-739, 255 & 254 MOD SWN-740, 255 & 254 MOD SWN-741, 255 & 254 MOD SWN-742, 255 & 254 MOD SWN-743, 255 & 254 MOD SWN-744, 255 & 254 MOD SWN-745, 255 & 254 MOD SWN-746, 255 & 254 MOD SWN-747, 255 & 254 MOD SWN-748, 255 & 254 MOD SWN-749, 255 & 254 MOD SWN-750, 255 & 254 MOD SWN-751, 255 & 254 MOD SWN-752, 255 & 254 MOD SWN-753, 255 & 254 MOD SWN-754, 255 & 254 MOD SWN-755, 255 & 254 MOD SWN-756, 255 & 254 MOD SWN-757, 255 & 254 MOD SWN-758, 255 & 254 MOD SWN-759, 255 & 254 MOD SWN-760, 255 & 254 MOD SWN-761, 255 & 254 MOD SWN-762, 255 & 254 MOD SWN-763, 255 & 254 MOD SWN-764, 255 & 254 MOD SWN-765, 255 & 254 MOD SWN-766, 255 & 254 MOD SWN-767, 255 & 254 MOD SWN-768, 255 & 254 MOD SWN-769, 255 & 254 MOD SWN-770, 255 & 254 MOD SWN-771, 255 & 254 MOD SWN-772, 255 & 254 MOD SWN-773, 255 & 254 MOD SWN-774, 255 & 254 MOD SWN-775, 255 & 254 MOD SWN-776, 255 & 254 MOD SWN-777, 255 & 254 MOD SWN-778, 255 & 254 MOD SWN-779, 255 & 254 MOD SWN-780, 255 & 254 MOD SWN-781, 255 & 254 MOD SWN-782, 255 & 254 MOD SWN-783, 255 & 254 MOD SWN-784, 255 & 254 MOD SWN-785, 255 & 254 MOD SWN-786, 255 & 254 MOD SWN-787, 255 & 254 MOD SWN-788, 255 & 254 MOD SWN-789, 255 & 254 MOD SWN-790, 255 & 254 MOD SWN-791, 255 & 254 MOD SWN-792, 255 & 254 MOD SWN-793, 255 & 254 MOD SWN-794, 255 & 254 MOD SWN-795, 255 & 254 MOD SWN-796, 255 & 254 MOD SWN-797, 255 & 254 MOD SWN-798, 255 & 254 MOD SWN-799, 255 & 254 MOD SWN-800, 255 & 254 MOD SWN-801, 255 & 254 MOD SWN-802, 255 & 254 MOD SWN-803, 255 & 254 MOD SWN-804, 255 & 254 MOD SWN-805, 255 & 254 MOD SWN-806, 255 & 254 MOD SWN-807, 255 & 254 MOD SWN-808, 255 & 254 MOD SWN-809, 255 & 254 MOD SWN-810, 255 & 254 MOD SWN-811, 255 & 254 MOD SWN-812, 255 & 254 MOD SWN-813, 255 & 254 MOD SWN-814, 255 & 254 MOD SWN-815, 255 & 254 MOD SWN-816, 255 & 254 MOD SWN-817, 255 & 254 MOD SWN-818, 255 & 254 MOD SWN-819, 255 & 254 MOD SWN-820, 255 & 254 MOD SWN-821, 255 & 254 MOD SWN-822, 255 & 254 MOD SWN-823, 255 & 254 MOD SWN-824, 255 & 254 MOD SWN-825, 255 & 254 MOD SWN-826, 255 & 254 MOD SWN-827, 255 & 254 MOD SWN-828, 255 & 254 MOD SWN-829, 255 & 254 MOD SWN-830, 255 & 254 MOD SWN-831, 255 & 254 MOD SWN-832, 255 & 254 MOD SWN-833, 255 & 254 MOD SWN-834, 255 & 254 MOD SWN-835, 255 & 254 MOD SWN-836, 255 & 254 MOD SWN-837, 255 & 254 MOD SWN-838, 255 & 254 MOD SWN-839, 255 & 254 MOD SWN-840, 255 & 254 MOD SWN-841, 255 & 254 MOD SWN-842, 255 & 254 MOD SWN-843, 255 & 254 MOD SWN-844, 255 & 254 MOD SWN-845, 255 & 254 MOD SWN-846, 255 & 254 MOD SWN-847, 255 & 254 MOD SWN-848, 255 & 254 MOD SWN-849, 255 & 254 MOD SWN-850, 255 & 254 MOD SWN-851, 255 & 254 MOD SWN-852, 255 & 254 MOD SWN-853, 255 & 254 MOD SWN-854, 255 & 254 MOD SWN-855, 255 & 254 MOD SWN-856, 255 & 254 MOD SWN-857, 255 & 254 MOD SWN-858, 255 & 254 MOD SWN-859, 255 & 254 MOD SWN-860, 255 & 254 MOD SWN-861, 255 & 254 MOD SWN-862, 255 & 254 MOD SWN-863, 255 & 254 MOD SWN-864, 255 & 254 MOD SWN-865, 255 & 254 MOD SWN-866, 255 & 254 MOD SWN-867, 255 & 254 MOD SWN-868, 255 & 254 MOD SWN-869, 255 & 254 MOD SWN-870, 255 & 254 MOD SWN-871, 255 & 254 MOD SWN-872, 255 & 254 MOD SWN-873, 255 & 254 MOD SWN-874, 255 & 254 MOD SWN-875, 255 & 254 MOD SWN-876, 255 & 254 MOD SWN-877, 255 & 254 MOD SWN-878, 255 & 254 MOD SWN-879, 255 & 254 MOD SWN-880, 255 & 254 MOD SWN-881, 255 & 254 MOD SWN-882, 255 & 254 MOD SWN-883, 255 & 254 MOD SWN-884, 255 & 254 MOD SWN-885, 255 & 254 MOD SWN-886, 255 & 254 MOD SWN-887, 255 & 254 MOD SWN-888, 255 & 254 MOD SWN-889, 255 & 254 MOD SWN-890, 255 & 254 MOD SWN-891, 255 & 254 MOD SW			