

DRAWING NUMBER

DRAWING NUMBER

DRAWING NUMBER

DRAWING NUMBER
9321-F-53533

DRAWING NUMBER
UE & C

DRAWING NUMBER
9321-F-53533

PIPE RESTRAINT & SUPPORT LEGEND

ALL RESTRAINTS & SUPPORTS WILL BE DESIGNATED AS FOLLOWS:

SYSTEM DESIGNATION FROM PIPING FAB. SPEC. NO. 9321-05-248-73

BASIC FUNCTION

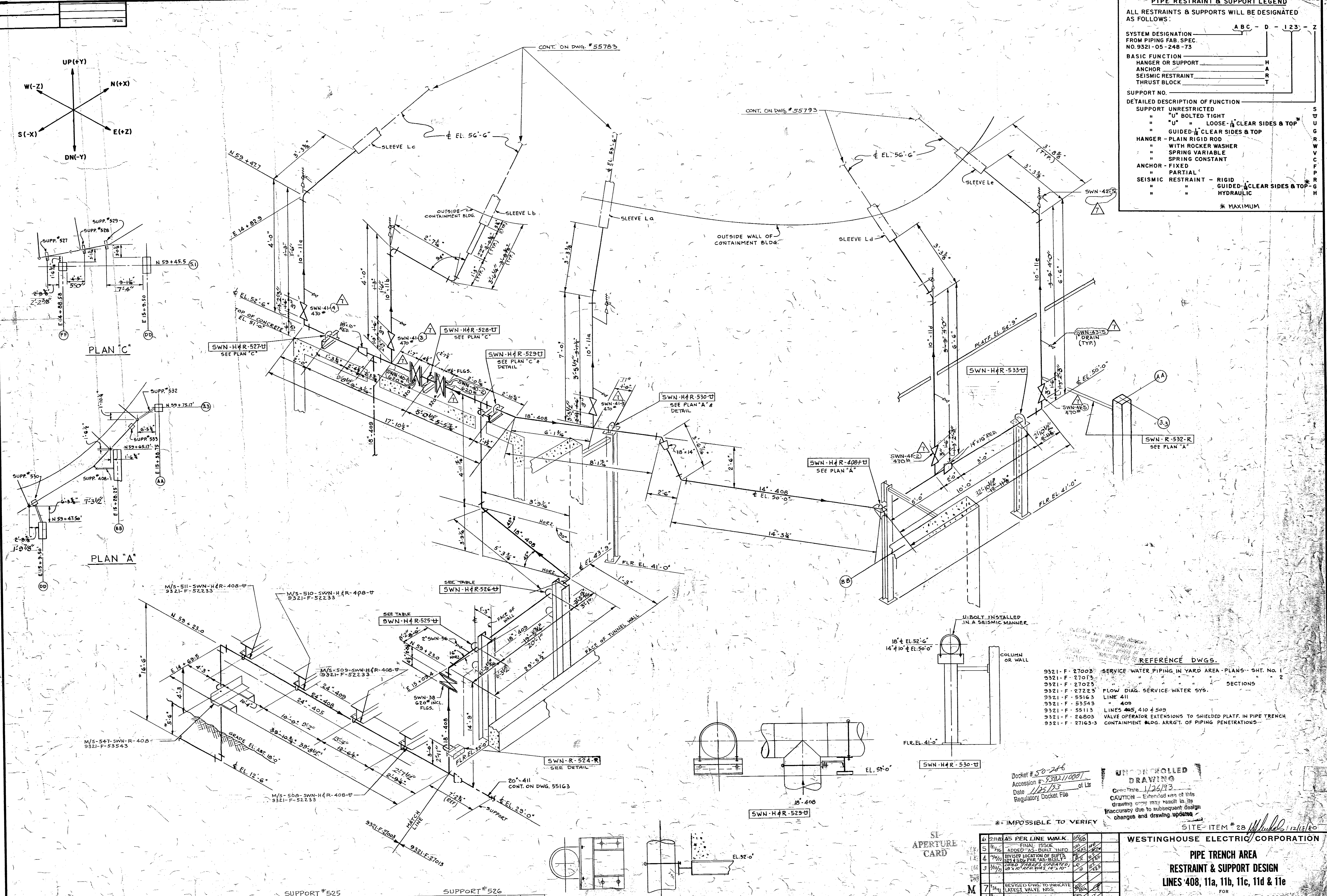
H	HANGER OR SUPPORT	H
A	ANCHOR - FIXED	A
R	SEISMIC RESTRAINT	R
T	THRUST BLOCK	T

SUPPORT NO.

DETAILED DESCRIPTION OF FUNCTION

S	SUPPORT UNRESTRICTED
U	" U" BOLTED TIGHT
T	" T" LOOSE - CLEAR SIDES & TOP*
G	" G" GUIDED - CLEAR SIDES & TOP
R	HANGER - PLAIN RIGID ROD
W	" WITH ROCKER WASHER
V	" SPRING VARIABLE
C	" SPRING CONSTANT
F	ANCHOR - FIXED
P	" PARTIAL
R	SEISMIC RESTRAINT - RIGID
G	" GUIDED - CLEAR SIDES & TOP*
H	" HYDRAULIC

* MAXIMUM



REFERENCE DWGS.

9321-F-27003	SERVICE WATER PIPING IN YARD AREA - PLANS - SHT. NO. 1
9321-F-27013	SECTION 2
9321-F-27025	FLOW DIAG. SERVICE WATER SYS.
9321-F-55163	LINE 411
9321-F-55143	" 409
9321-F-55113	VALVE OPERATOR EXTENSIONS TO SHIELDED PLATF. IN PIPE TRENCH
9321-F-26805	CONTAINMENT BLDG. ARR'T. OF PIPING PENETRATIONS
9321-F-27163-3	

Docket # 50-286
Accession # 250211001
Date 11/25/73 of Lt
Regulatory Docket File

UNCONTROLLED DRAWING
Date 1/26/93
CAUTION - Extended use of this drawing may result in its inaccuracy due to subsequent design changes and drawing updates

* IMPOSSIBLE TO VERIFY

SUPPORT #525					
LINE#	D.WT.	V. SEIS.	V. THER.	H. SEIS.	H. THER.
408	3381	001		573(2)	
409	3339	406		815	

SUPPORT #526					
LINE#	D.WT.	V. SEIS.	V. THER.	H. SEIS.	H. THER.
408	2634	251		924(2)	
409	2913	643		1377	

WESTINGHOUSE ELECTRIC CORPORATION

PIPE TRENCH AREA
RESTRAINT & SUPPORT DESIGN

LINES 408, 11a, 11b, 11c, 11d & 11e

FOR
CONSOLIDATED EDISON COMPANY
INDIAN POINT GENERATING STATION
UNIT NO. 3

U. E. & C. DWG. NO. **9321-F-53533-7** CON. ED. CO. DWG. NO. **A205253**

NO.	REVISION	DATE	DESCRIPTION	BY	CHK.
6	AS PER LINE WALK	08/66			
5	FINAL ISSUE	02/70			
4	ADDRESS	02/70			
3	REVISED LOCATION OF SUPPORTS	02/70			
2	REVISED THE AS-BUILT	02/70			
1	REVISED DWGS. TO INDICATE LATEST VALVE NOS.	02/70			
0	REVISED DWGS. TO INDICATE LATEST VALVE NOS.	02/70			

9302180107