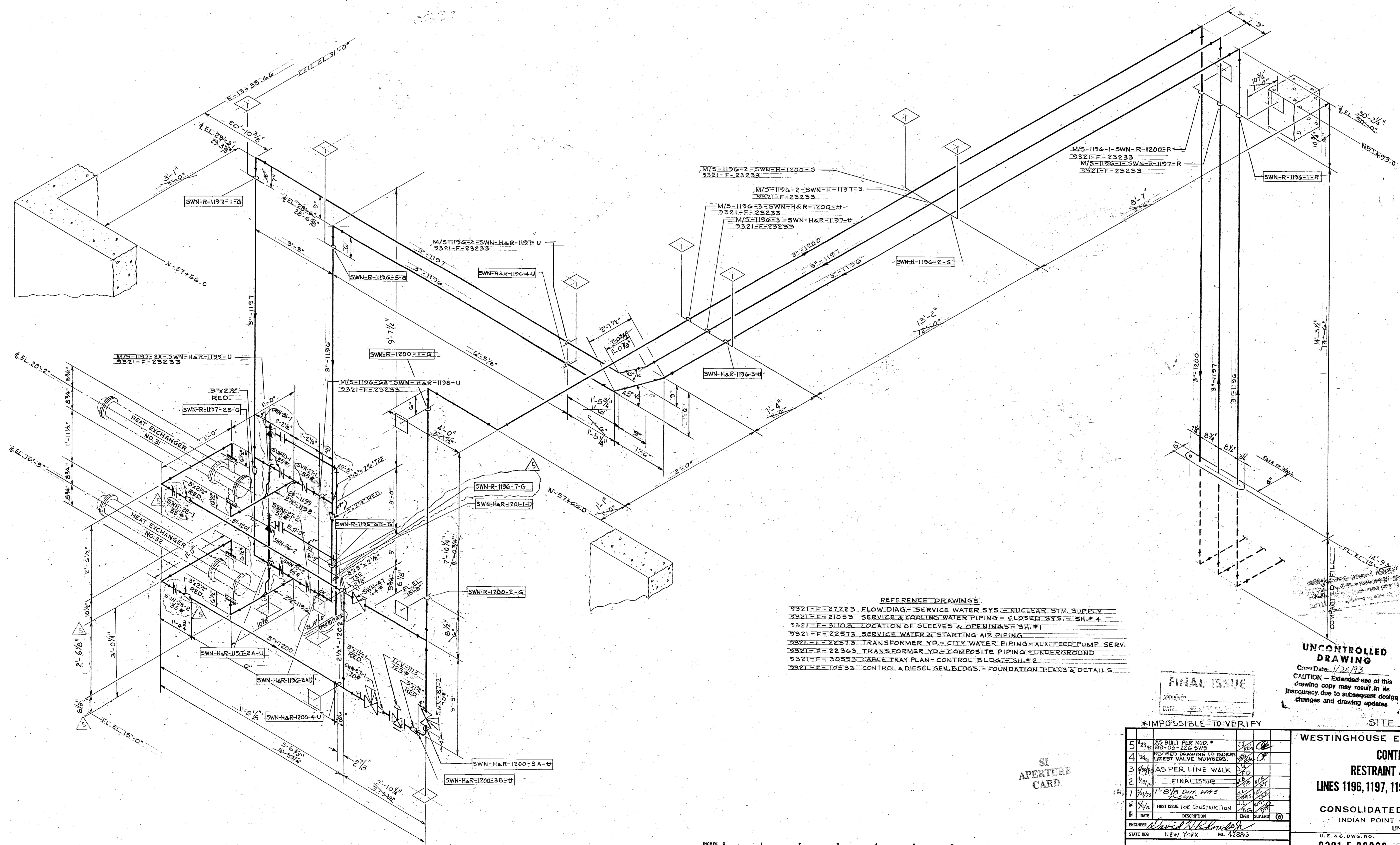


**PIPE RESTRAINT & SUPPORT LEGEND**  
ALL RESTRAINTS & SUPPORTS WILL BE DESIGNATED AS FOLLOWS:

SYSTEM DESIGNATION FROM PIPING FAB. SPEC. NO. 9321-05-248-73	A B C	D	1 2 3	Z
BASIC FUNCTION				
HANGER OR SUPPORT				H
ANCHOR				A
SEISMIC RESTRAINT				R
THRUST BLOCK				T
SUPPORT NO.				
DETAILED DESCRIPTION OF FUNCTION				
SUPPORT UNRESTRICTED				S
"U" BOLTED TIGHT				U
"U" LOOSE - 1/4" CLEAR SIDES & TOP				U
GUIDED - 1/4" CLEAR SIDES & TOP				G
HANGER - PLAIN RIGID ROD				R
" WITH ROCKER WASHER				W
" SPRING VARIABLE				V
" SPRING CONSTANT				C
ANCHOR - FIXED				F
" PARTIAL				P
SEISMIC RESTRAINT - RIGID				R
" GUIDED - 1/4" CLEAR SIDES & TOP				G
" HYDRAULIC				H



- REFERENCE DRAWINGS:**
- 9321-F-21223 FLOW DIAG. - SERVICE WATER SYS. - NUCLEAR STM. SUPPLY
  - 9321-F-21053 SERVICE & COOLING WATER PIPING - CLOSED SYS. - SH.# 4
  - 9321-F-31103 LOCATION OF SLEEVES & OPENINGS - SH.# 1
  - 9321-F-22573 SERVICE WATER & STARTING AIR PIPING
  - 9321-F-22373 TRANSFORMER YD. - CITY WATER PIPING - AUX. FEED PUMP SERV.
  - 9321-F-22363 TRANSFORMER YD. - COMPOSITE PIPING - UNDERGROUND
  - 9321-F-30893 CABLE TRAY PLAN - CONTROL BLDG. - SH.# 2
  - 9321-F-12533 CONTROL & DIESEL GEN. BLDGS. - FOUNDATION PLANS & DETAILS

**FINAL ISSUE**

**UNCONTROLLED DRAWING**  
CAUTION - Extended use of this drawing copy may result in its inaccuracy due to subsequent design changes and drawing updates.

Docket # 50-246  
Accession # 3302110001  
Date 1/24/93  
Regulatory Docket File

**\*IMPOSSIBLE TO VERIFY**

NO.	DESCRIPTION	DATE	BY	CHKD.
5	AS BUILT PER MOD. # 100-02-226 GWS	1/24/93		
4	REVISED DRAWING TO INCLUDE LATEST VALVE NUMBERS	1/24/93		
3	AS PER LINE WALK	1/24/93		
2	FINAL ISSUE	1/24/93		
1	1" B/LB DIM. W/S	1/24/93		
#	FIRST ISSUE FOR CONSTRUCTION	1/24/93		
#	DATE			
#	DESCRIPTION			
#	ENGINEER			
#	STATE REG.			

**WESTINGHOUSE ELECTRIC CORPORATION**  
**CONTROL BUILDING**  
**RESTRAINT & SUPPORT DESIGN**  
**LINES 1196, 1197, 1198, 1199, 1200, 1201 & 1202**  
FOR  
**CONSOLIDATED EDISON COMPANY**  
INDIAN POINT GENERATING STATION  
UNIT NO. 3

U. E. & C. DWG. NO. **9321-F-23233-5** CON. ED. CO. DWG. NO. **A 202872**

9302170373