

James S. Baumstark
Vice President
Nuclear Engineering

Consolidated Edison Company of New York, Inc.
Indian Point 2 Station
Broadway & Bleakley Avenue
Buchanan, New York 10511

Internet: baumstarkj@coned.com
Telephone: (914) 271-7382
Cellular: (914) 391-9005
Pager: (917) 457-9698
Fax: (914) 734-5718

September 16, 1998

Re: Indian Point Unit No. 2
Docket No. 50-247

Document Control Desk
US Nuclear Regulatory Commission
Mail Station PI-137
Washington, DC 20555

SUBJECT: Additional Revised Information - Evaluation of a Relevant Condition in Accordance With ASME B&PV Code, Section XI (IWB-3522) For Class 2 Piping, and Request for Approval of an Alternative to Code Repair in Accordance with 10 CFR 50.55a(a)(3)(i)

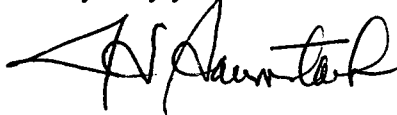
REFERENCE: 1) Con Edison Letter dated August 3, 1998 to USNRC.
2) Con Edison Letter dated August 13, 1998 to USNRC.

On August 3, 1998 Consolidated Edison requested, and subsequently received verbal approval from the NRC to use an alternative to performing a code repair on a section of Class 2 Residual Heat Removal (RHR) piping. The proposed alternative was described and documented in Reference 1 as providing an acceptable level of quality and safety.

This letter provides additional revised information supporting the alternative repair. Attached is a vendor (Team Inc.) drawing of the clamp which was temporarily installed on RHR pump mini-flow line # 337. This drawing replaces a similar drawing which was previously submitted via Reference 1 as "Attachment 4." Line # 337 was subsequently repaired (Reference 2) in accordance with ASME Code requirements prior to plant restart.

Should you or your staff have any questions regarding this matter, please contact Mr. Charles W. Jackson, Manager, Nuclear Safety & Licensing.

Very truly yours,



Attachment
280065

9809290068 980916
PDR ADOCK 05000247
P PDR

C: Mr. Hubert J. Miller
Regional Administrator - Region I
US Nuclear Regulatory Commission
475 Allendale Road
King of Prussia, PA 19406

Mr. Jefferey Harold, Project Manager
Project Directorate I-1
Division of Reactor Projects I/II
US Nuclear Regulatory Commission
Mail Stop 14B-2
Washington, DC 20555

Senior Resident Inspector
US Nuclear Regulatory Commission
PO Box 38
Buchanan, NY 10511

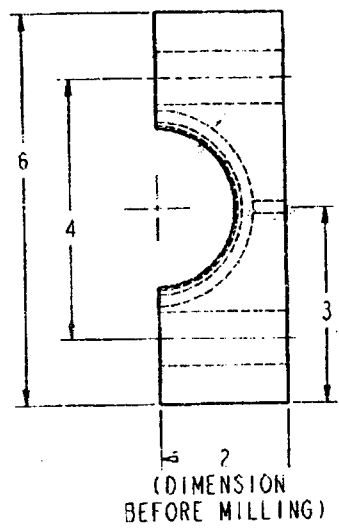
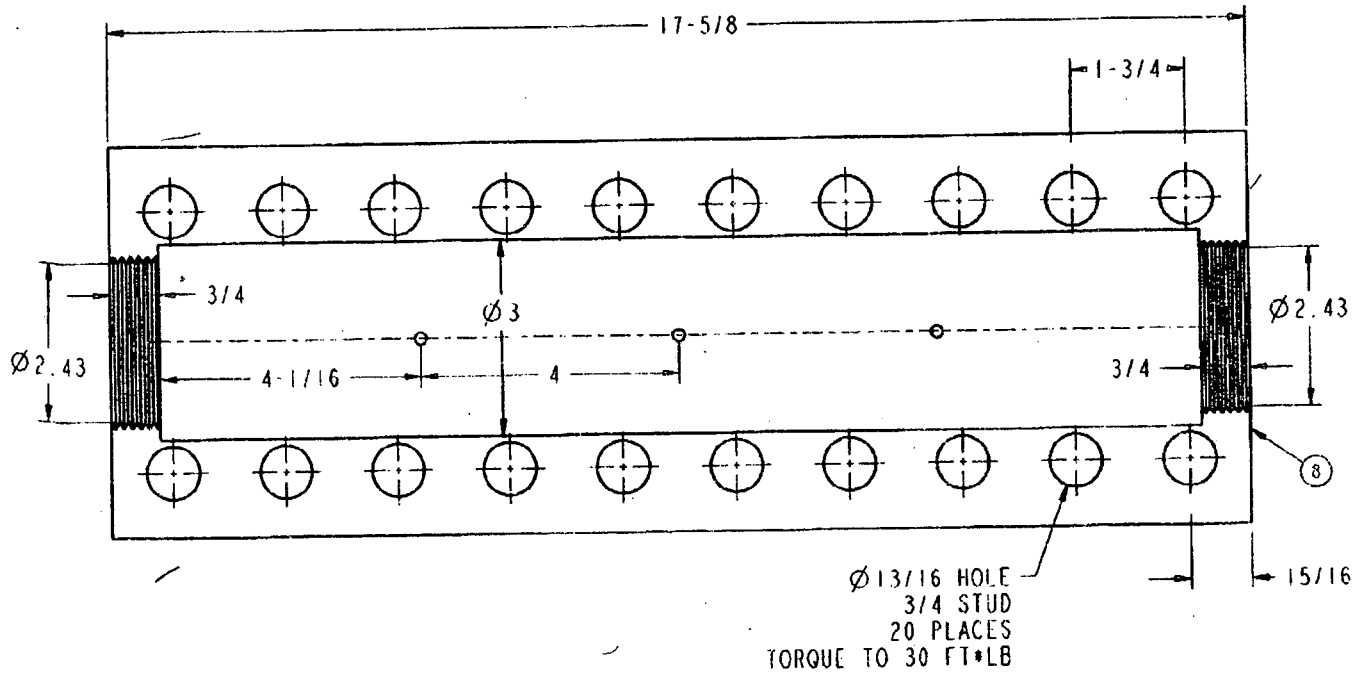
ATTACHMENT

TEAM INC. CLAMP DRAWING

Consolidated Edison Company of New York, Inc.
Indian Point Unit No. 2
Docket No. 50-247
September 1998

NUCLEAR

DO NOT PAINT



2 HALVES REQ'D
 6 - 1/8 NPT (CAVITY)
 ALL DIMENSIONS TYPICAL UNLESS OTHERWISE NOTED
 PMI REQUIRED FOR ALL MATERIALS
 MILL 1/16" FROM SPLITLINE (EACH HALF)
 DO NOT INJECT
 WELDED ENDPLATES OPTIONAL
 0.110 CRUNCH

Ø 13/16 HOLE
 3/4 STUD
 20 PLACES
 TORQUE TO 30 FT*LB

LTR	BY	CHKD	ECO	DATE	DESCRIPTION	
					MODEL NAME: 74298	WT.: 112.4 LB
					UNLESS NOTED OTHERWISE	FILENAME: 74298
					FINISHED SURFACES: MILL SHARP CORNERS	CON-ED 1P2
					TIN FINISHES: 3 PLACE DECIMAL ± .005 2 PLACE DECIMAL ± .01 1 PLACE DECIMAL ± .1 ANGLES ± 1/2° TOLERANCES ± .1/32	DWG. NO.: A074298C
					DRAWN BY: CYI	SCALE: 3/4
					CHECKED: JOM	SHEET 1 OF 3
					APPROVED:	REV. C