

Table 2.4-1 Maximum Water Surface Elevations (ft) from the Applicant’s Model Setup and Sensitivity Analyses

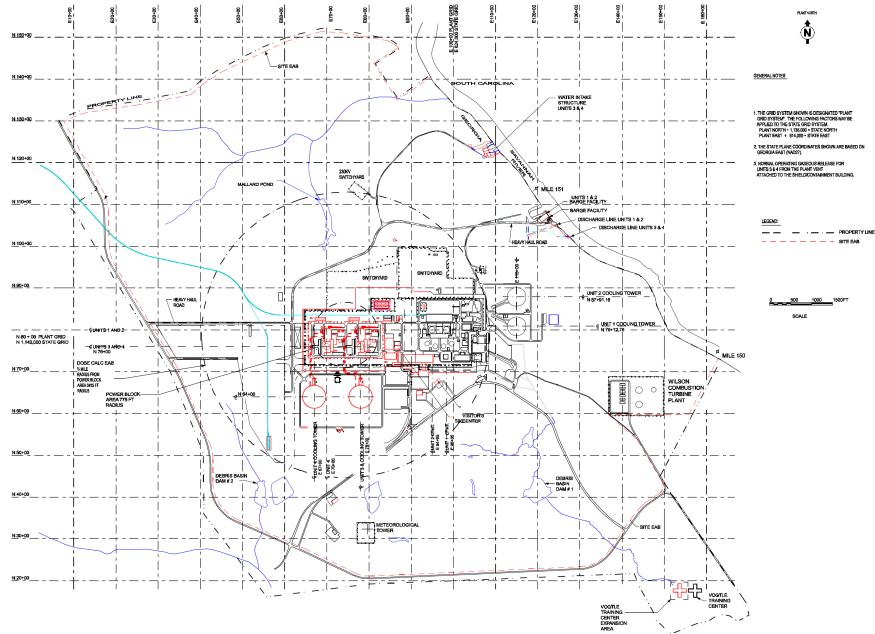
Model Reach	Applicant’s Model	Manning’s Roughness of Overbanks and Channels			Contraction/ Expansion Coefficient of Culvert Cross Sections	Inline Weir Coefficient of Blocked Culverts
		0.025	0.030	0.050		
Feeder Ditch 1	219.45 219.47 ^r	219.47 ^a 219.49 ^b 220.11 ^c	219.49 ^a 219.52 ^b	219.57 ^a 219.62 ^b	219.46	219.45
Feeder Ditch 2	219.40 219.42 ^r	219.40 ^a 219.41 ^b 220.09 ^c	219.40 ^a 219.42 ^b	219.40 ^a 219.45 ^b	219.40	219.40
Feeder Ditch 3	219.42 219.43 ^r	219.45 ^a 219.45 ^b 220.10 ^c	219.49 ^a 219.48 ^b	219.65 ^a 219.64 ^b	219.42	219.42
Main Stem + M1 through M4	219.37 219.39 ^r	219.37 ^a 219.39 ^b 220.07 ^c	219.37 ^a 219.40 ^b	219.37 ^a 219.43 ^b	219.37	219.37

a—minimum value in overbank areas of feeder ditches and reach 1 of the main ditch only
b—minimum value in overbank areas of all ditches
c—applied to all overbank areas and channel cross sections
r—results from applicant’s model revision 1

Table 2.4-2 Summary of Contributing Sub-basins the Feeder and Main Stem Ditches
(based on HEC-HMS Hydrologic Model Configuration shown in Figure 2.4.2.4-103. For each ditch the sub-basin and upstream ditch are provided so that the number of contributing sub-basins increases at downstream ditches)

Ditch	Contributing Sub-basins
Feeder Ditch (FD) 1	FD1W, UN12-N,
Feeder Ditch (FD) 2	FD2W, FD2E
Feeder Ditch (FD) 3	FD3E, FD3W, OF1, OF2
Main Stem (M) 1	FD1, UN12S, M1W, M1S
Main Stem (M) 2	M1, FD2, M2E, M2W, M2S
Main Stem (M) 3	M2, FD3, M3W, M3E, M3S, LD2
Main Stem (M) 4	M3, M4W
Main Stem (M) 5	M4, M5W, LD3
Main Stem (M) 6	M5,M6W, LD4, FD5aN
Main Stem (M) 7	M6, M7W, M7E, LD5, FD6bE,FD6aE
Main Stem (M) 8	M7, M8W, M8Cat

Vogle Electric Generating Plant, Units 3 & 4
COL Application
Part 2 — FSAR



VEGP COL 2.1-1

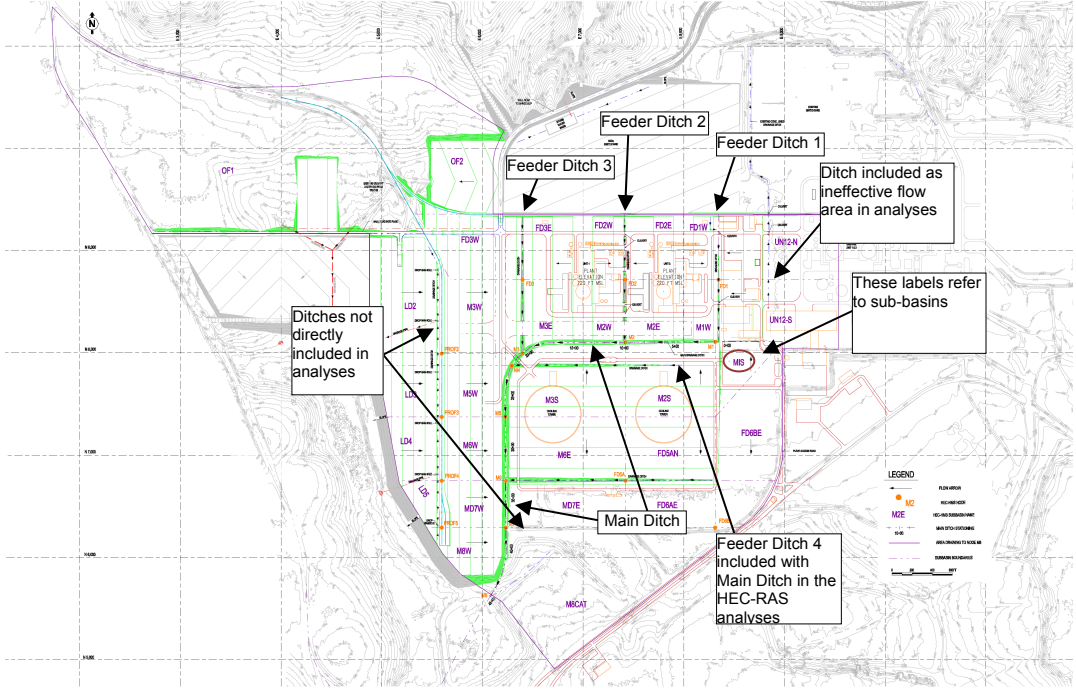
Figure 1.1-202
Site Layout

1.1-15

Revision 0

Figure 2.4-1 VEGP Site Map VEGP
(VEGP FSAR Figure 1.1-202)

Vogle Electric Generating Plant, Units 3 & 4
COL Application
Part 2 — FSAR



VEGP COL 2.4-2

Figure 2.4-201
Site Plan with PMP Drainage Boundaries and Flow Paths

2.4-18

Revision 0

Figure 2.4-2 Basins Drainage Plan
(Based on VEGP FSAR Figure 2.4-201. The figure identifies several ditches included in the HEC-RAS hydraulic analysis.)

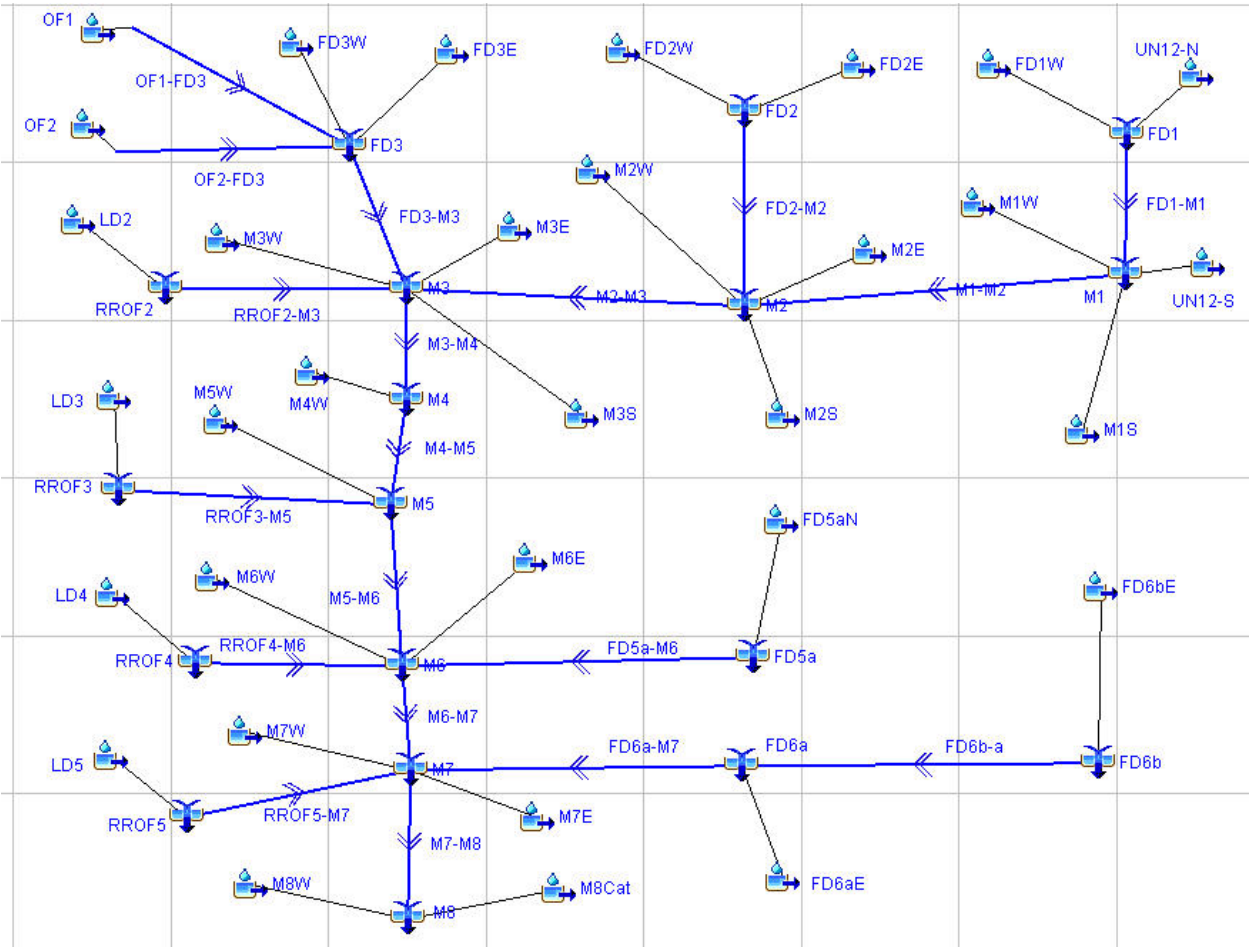


Figure 2.4-3 HEC-HMS Drainage Basin Configuration
(As received from the applicant)