

V. C. Summer Nuclear Station, Units 2 and 3
COL Application
Part 2, FSAR

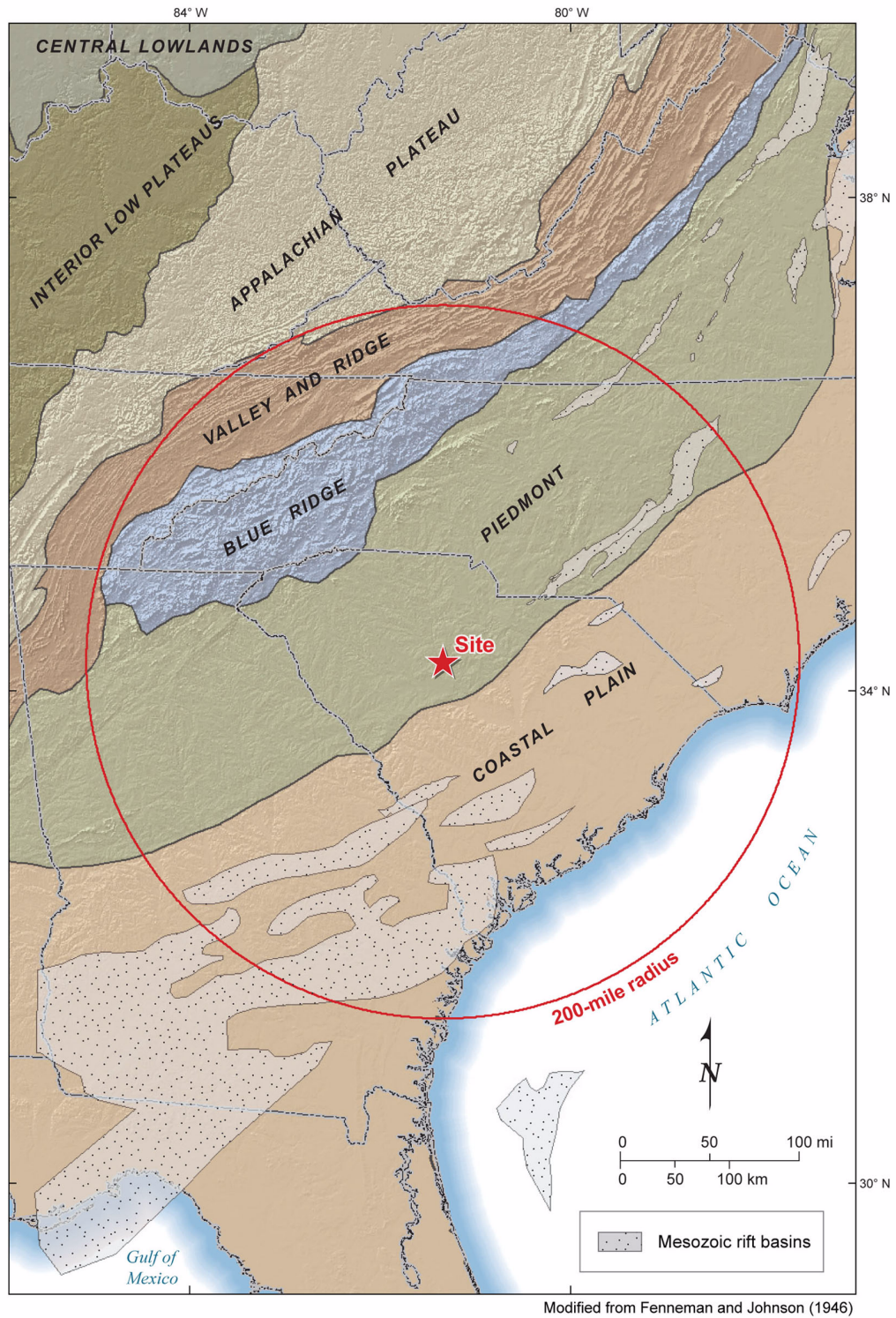


Figure 2.5.1-201. Map of Physiographic Provinces and Mesozoic Rift Basins

V. C. Summer Nuclear Station, Units 2 and 3
COL Application
Part 2, FSAR

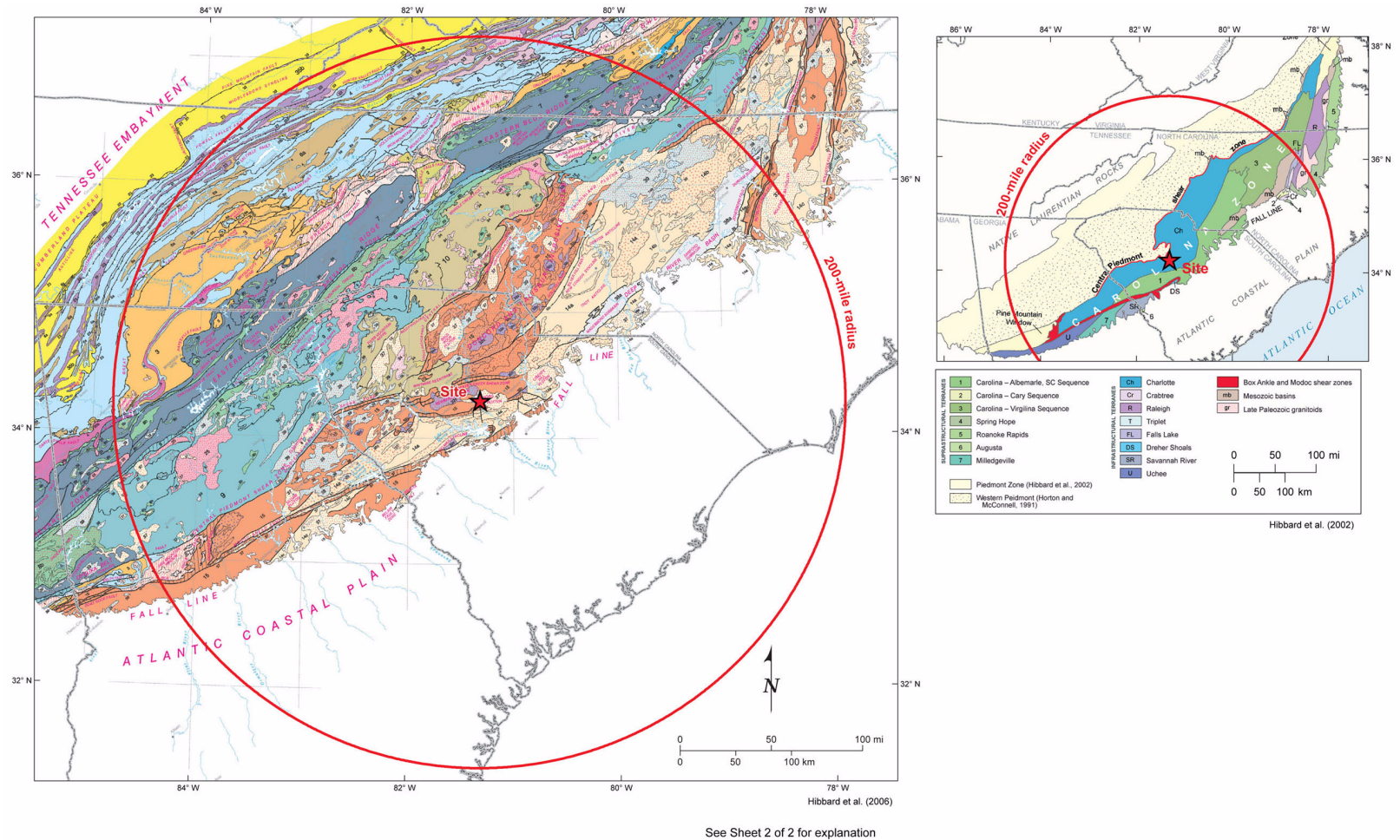


Figure 2.5.1-202. Tectonic Map of the Piedmont—Terranes within the Carolina Zone (Sheet 1 of 2)

V. C. Summer Nuclear Station, Units 2 and 3 COL Application Part 2, FSAR

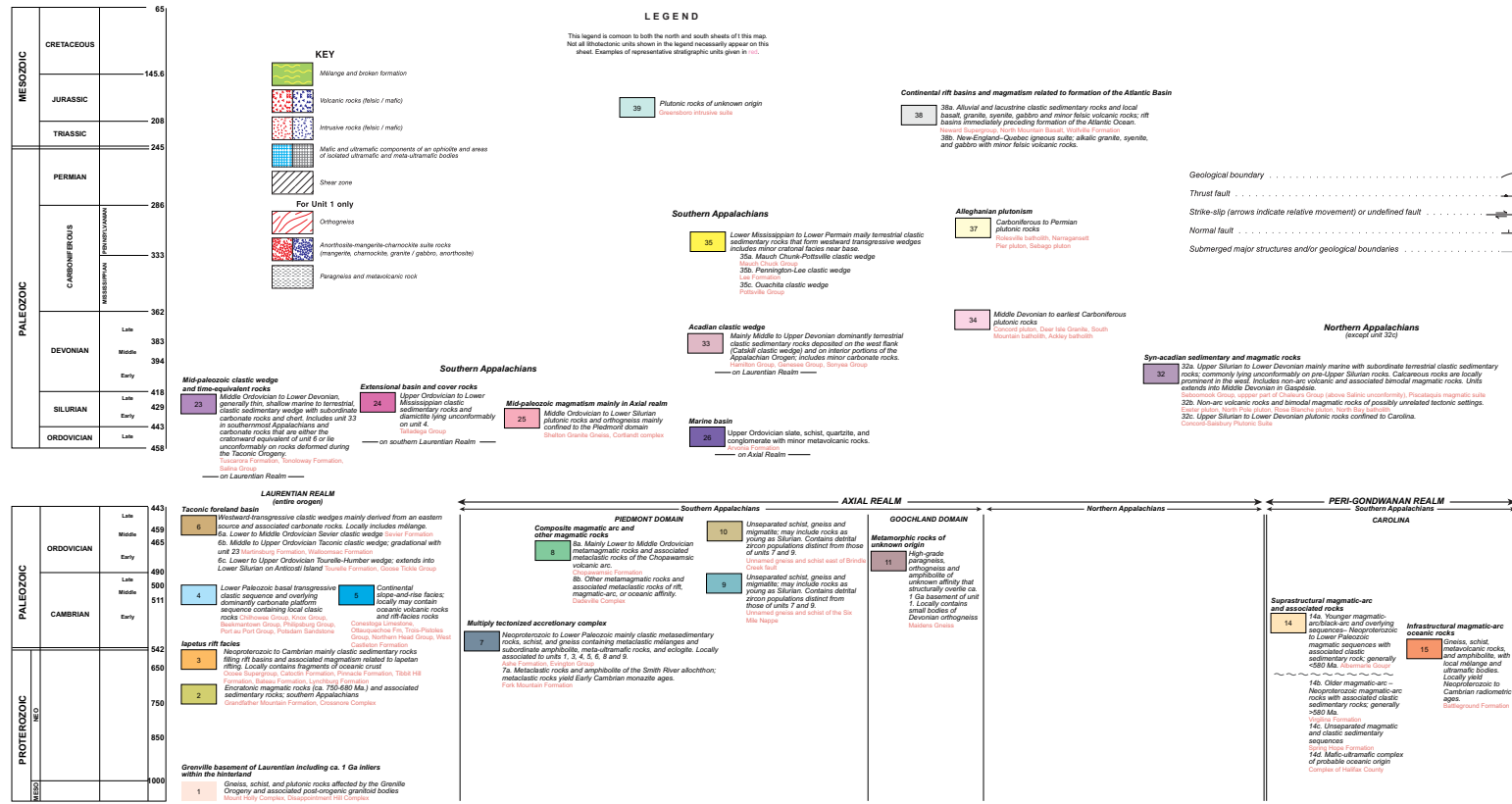


Figure 2.5.1-202. Tectonic Map of the Piedmont—Western Piedmont (Sheet 2 of 2)

V. C. Summer Nuclear Station, Units 2 and 3
COL Application
Part 2, FSAR

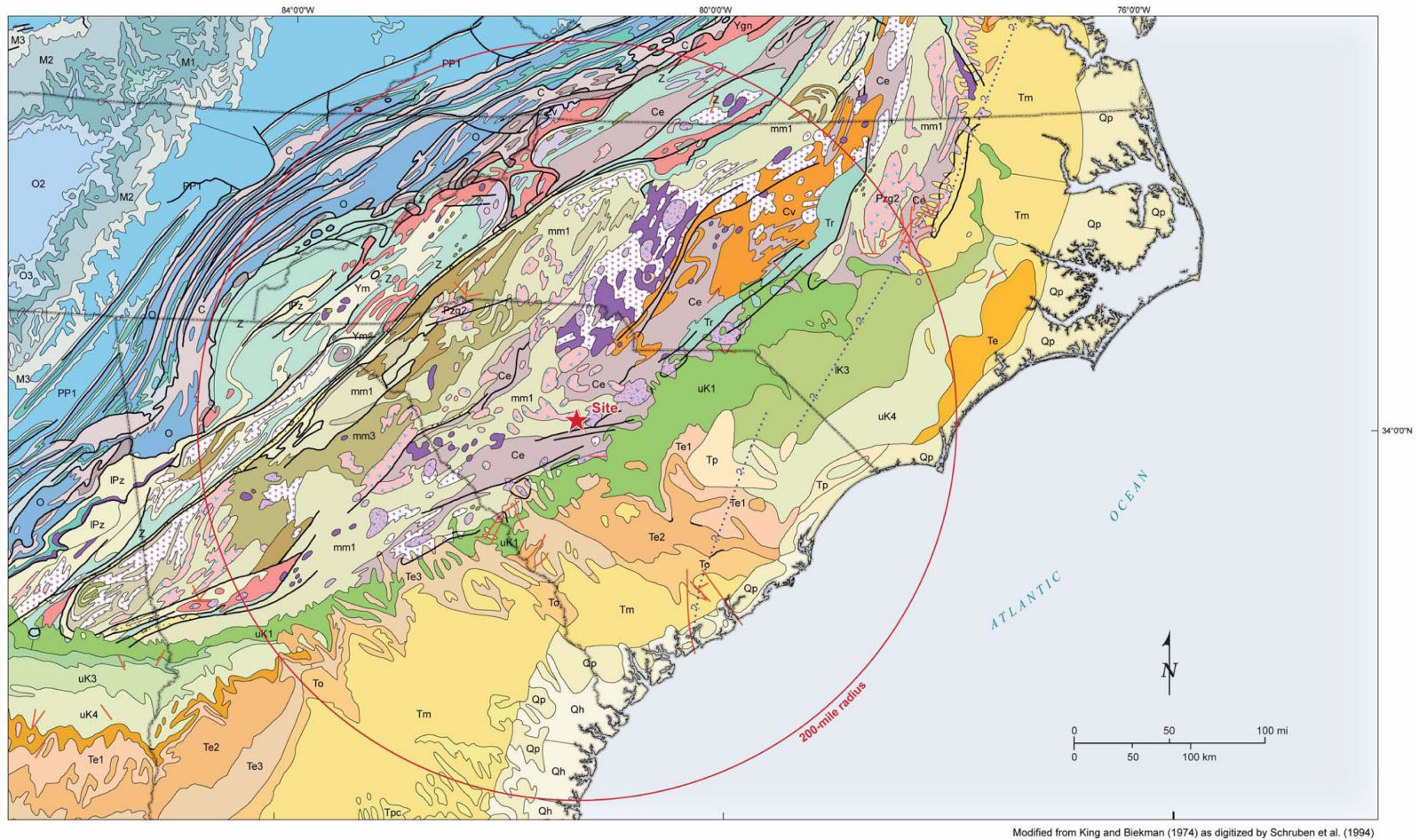


Figure 2.5.1-203. Site Region Geologic Map (Sheet 1 of 2)

V. C. Summer Nuclear Station, Units 2 and 3

COL Application

Part 2, FSAR

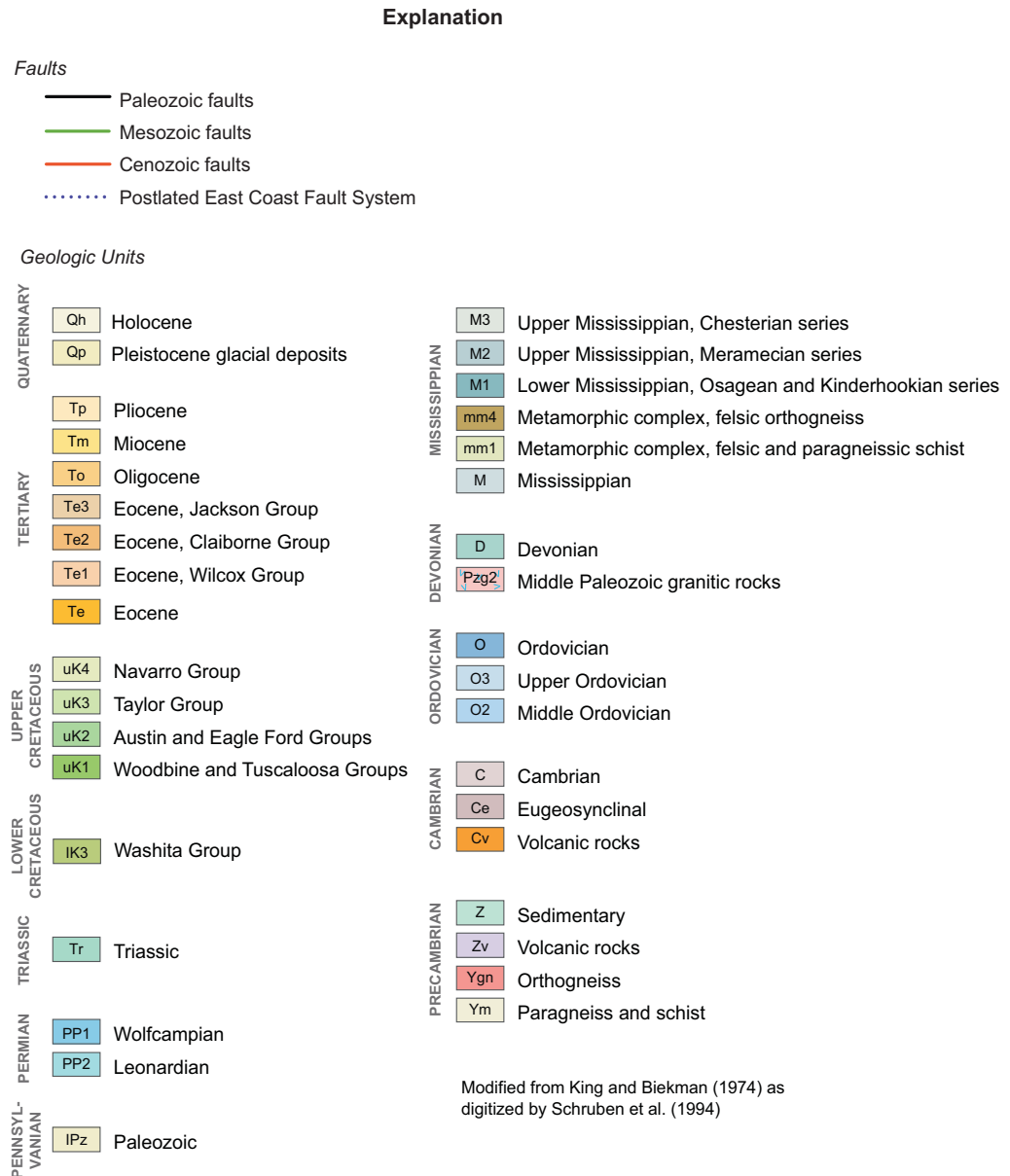


Figure 2.5.1-203. Explanation of Site Region Geologic Map (Sheet 2 of 2)

**V. C. Summer Nuclear Station, Units 2 and 3
COL Application
Part 2, FSAR**

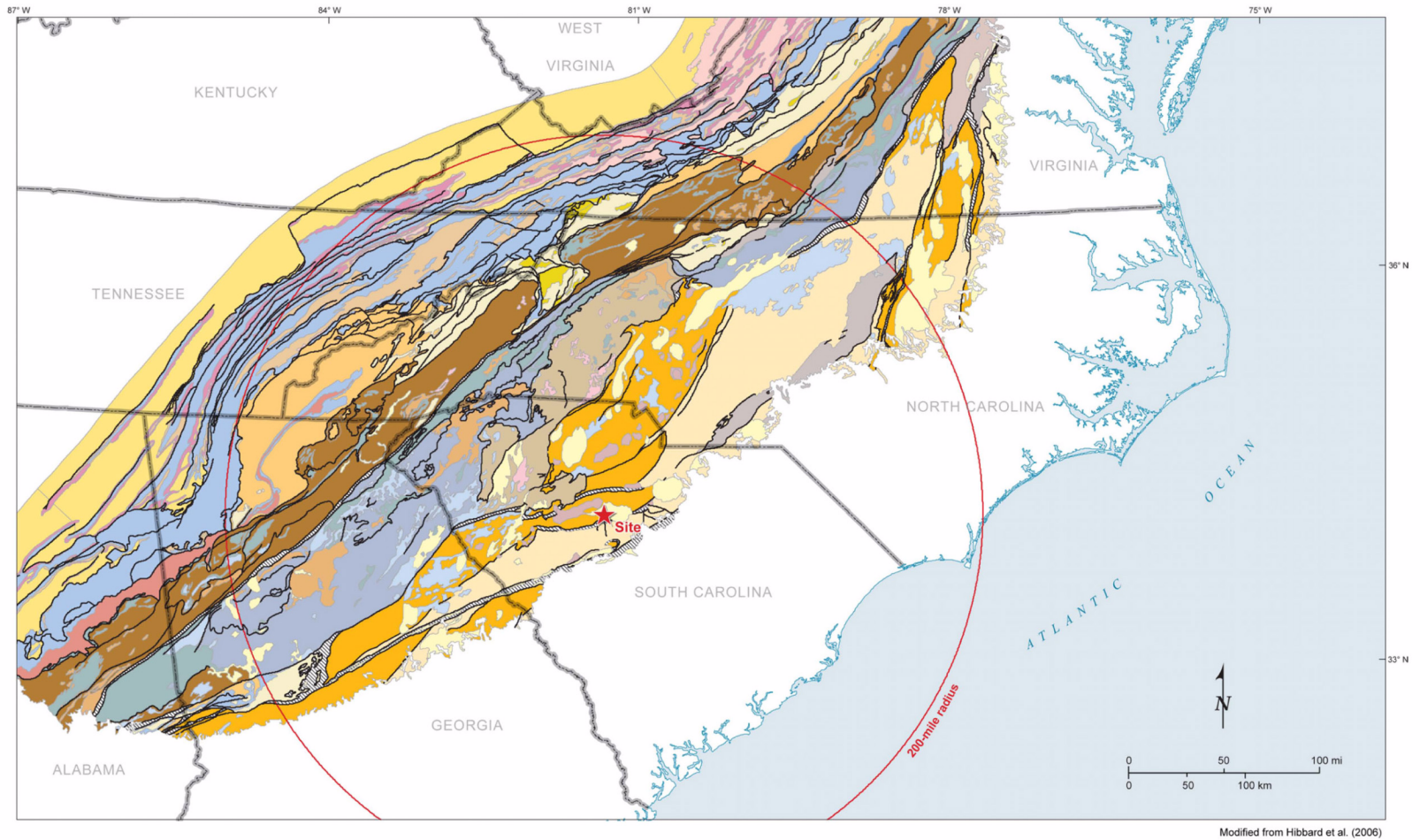


Figure 2.5.1-204. Lithotectonic Map of the Appalachian Orogen (Sheet 1 of 2)

V. C. Summer Nuclear Station, Units 2 and 3 COL Application Part 2, FSAR

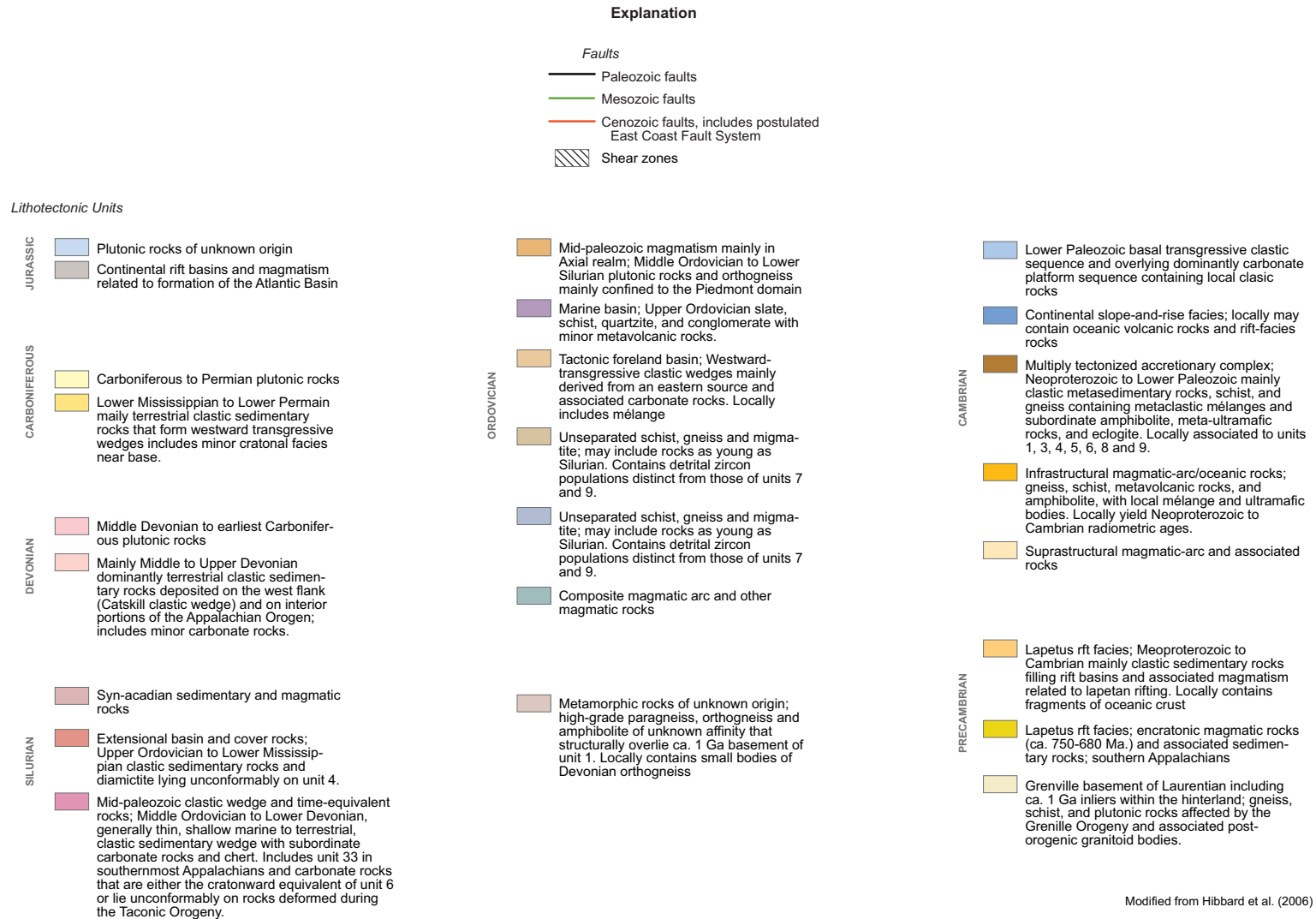


Figure 2.5.1-204. Lithotectonic Map of the Appalachian Orogen (Sheet 2 of 2)

V. C. Summer Nuclear Station, Units 2 and 3
COL Application
Part 2, FSAR

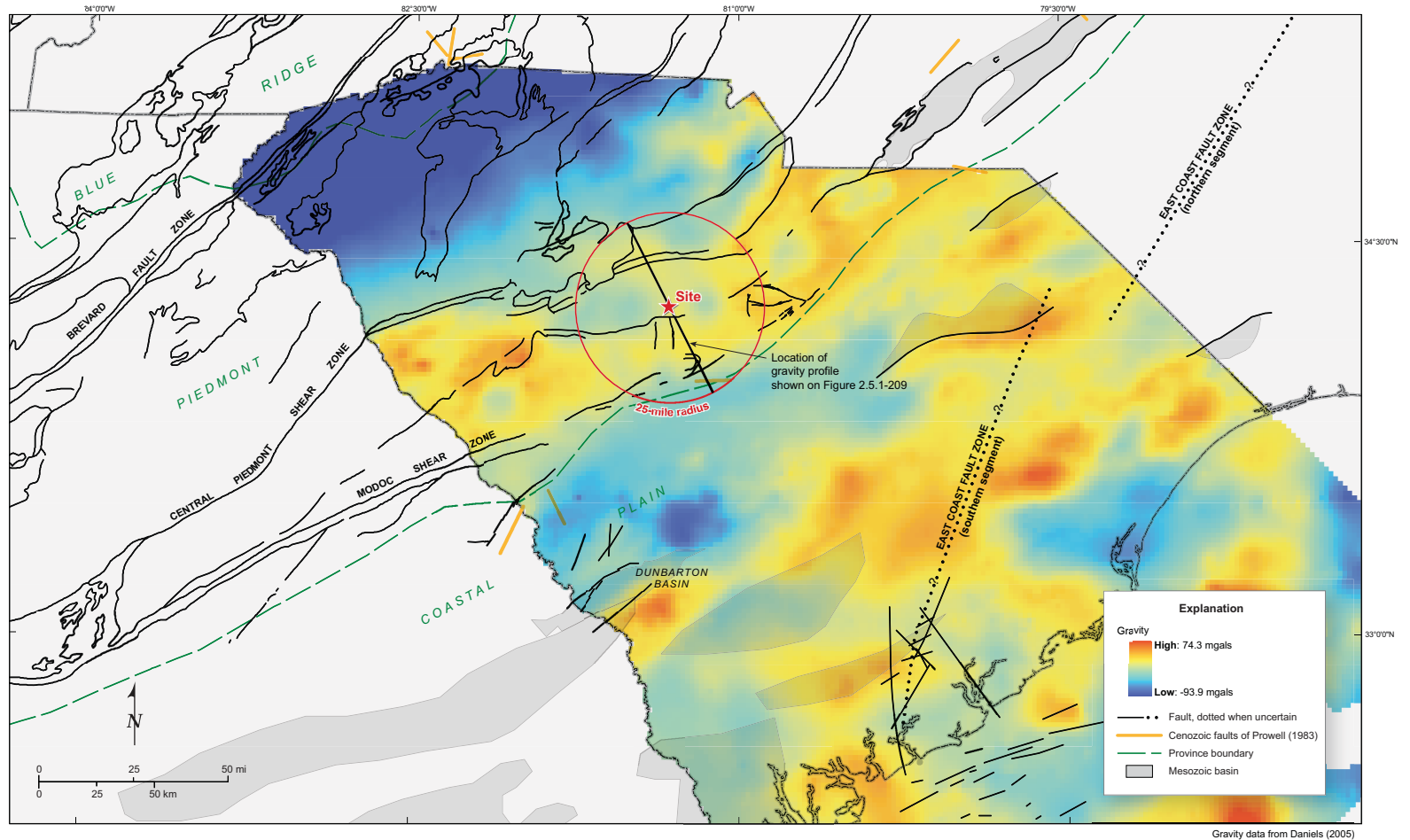


Figure 2.5.1-205. Regional Gravity Data

V. C. Summer Nuclear Station, Units 2 and 3
COL Application
Part 2, FSAR

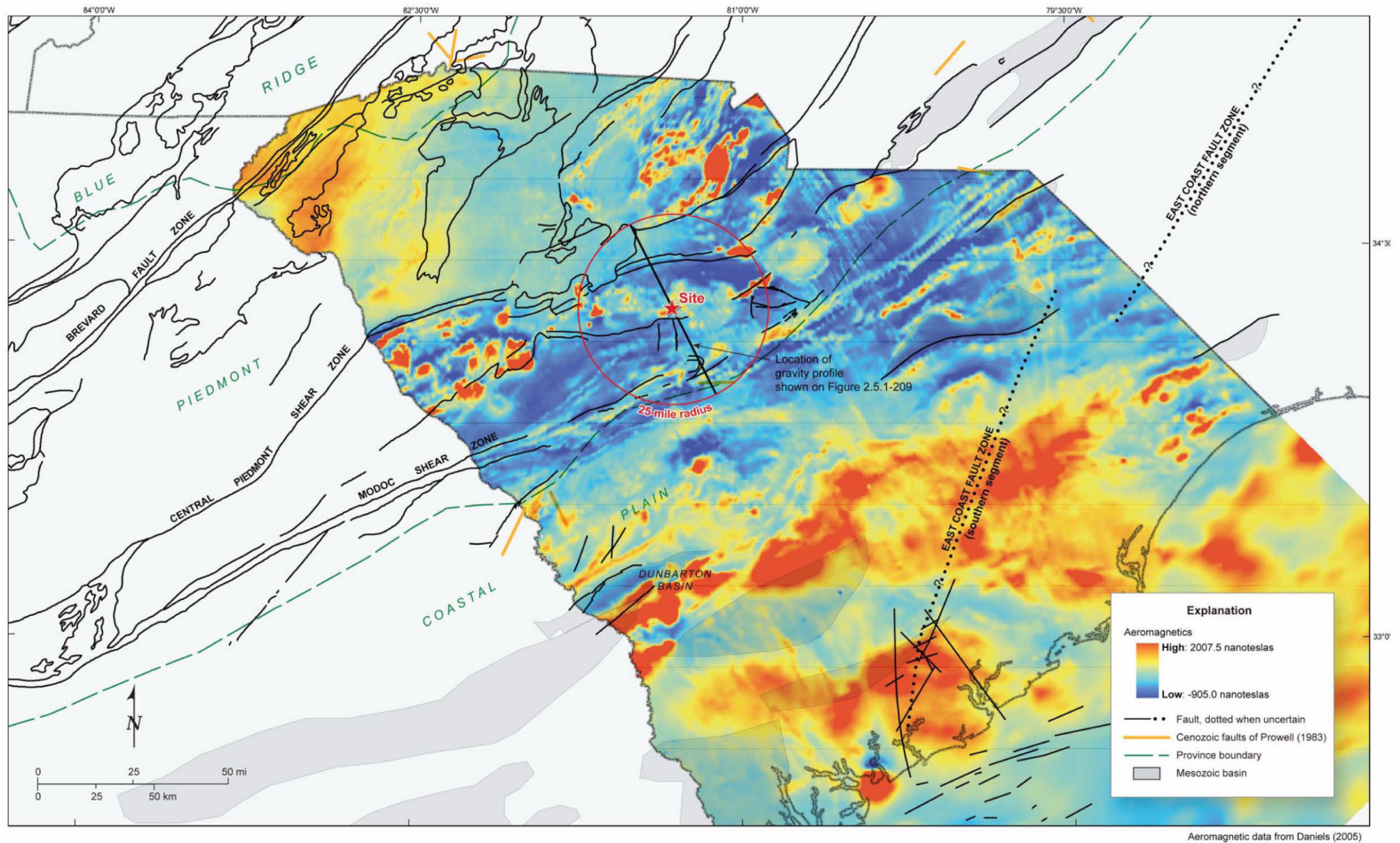


Figure 2.5.1-206. Regional Magnetic Data

V. C. Summer Nuclear Station, Units 2 and 3 COL Application Part 2, FSAR

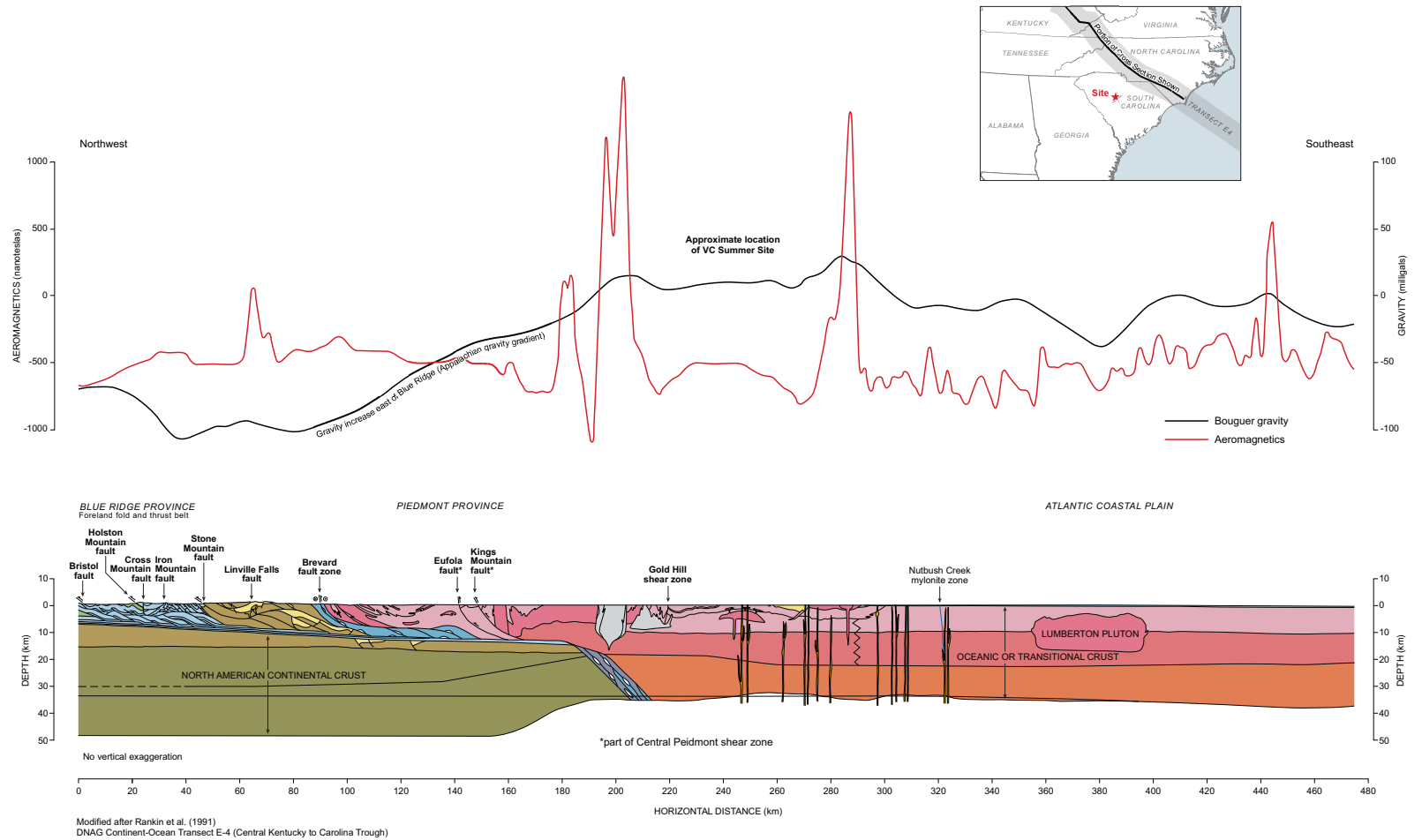


Figure 2.5.1-207. Regional Cross-Section E4

V. C. Summer Nuclear Station, Units 2 and 3 COL Application Part 2, FSAR

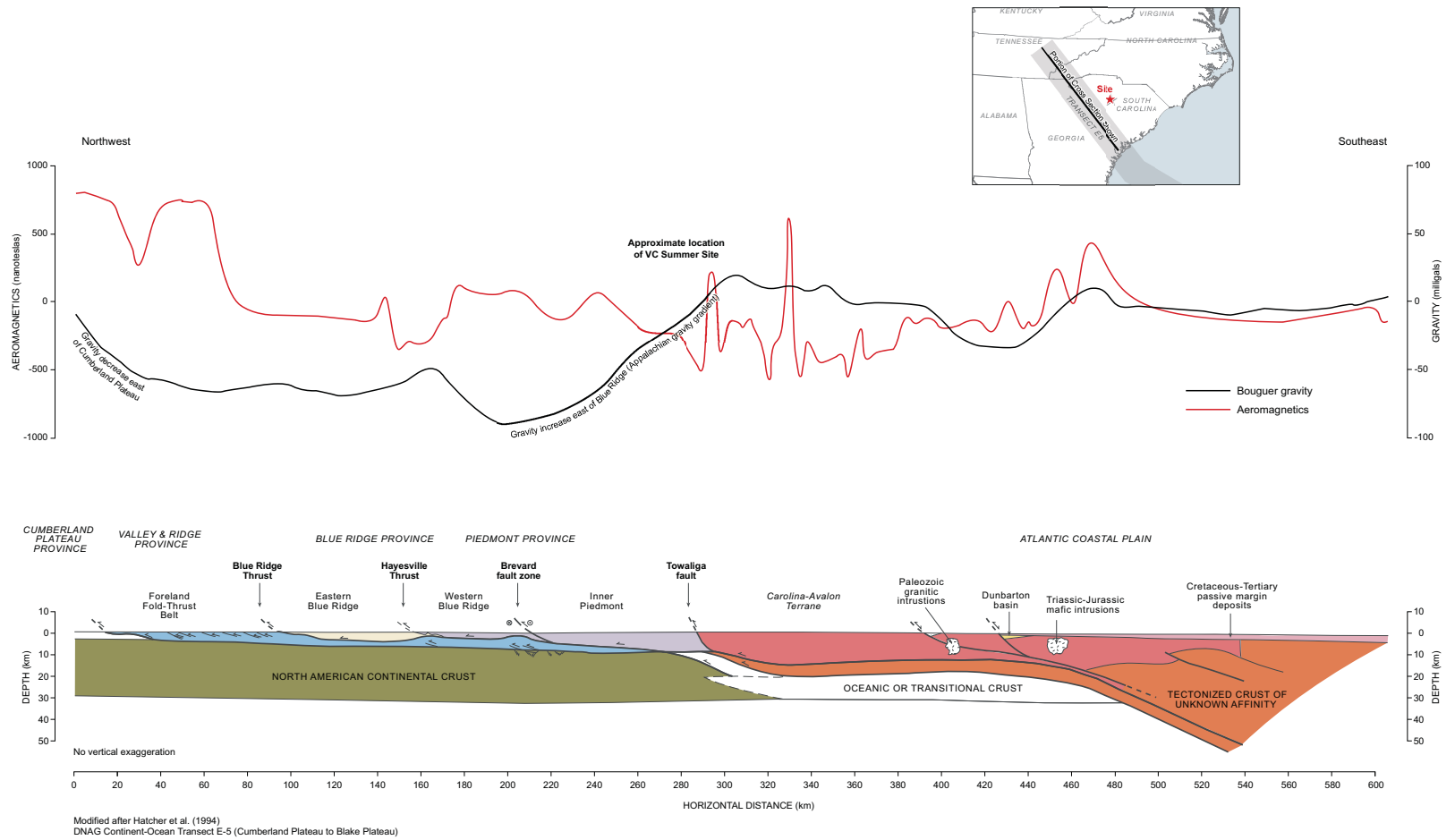
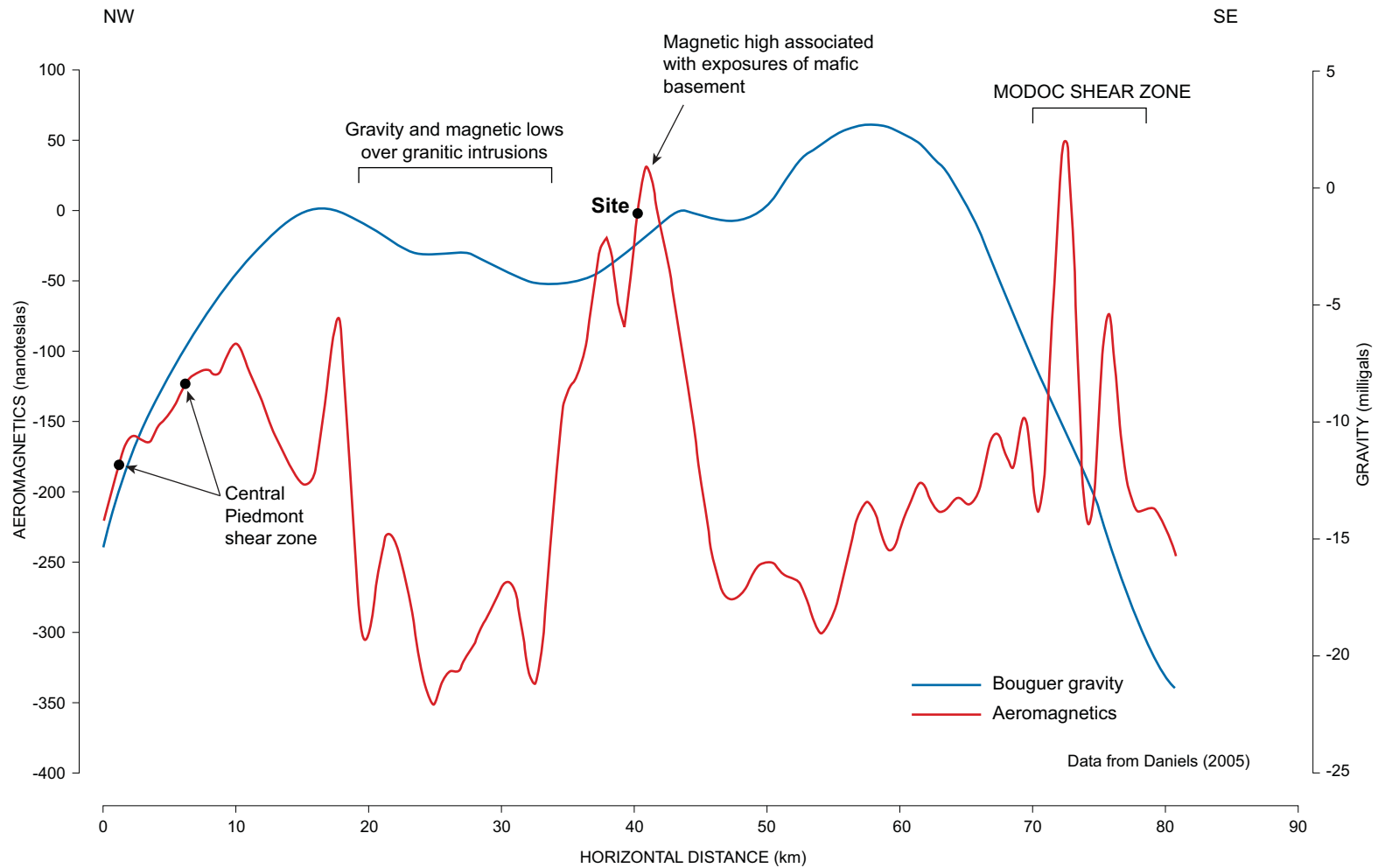


Figure 2.5.1-208. Regional Cross-Section E5

**V. C. Summer Nuclear Station, Units 2 and 3
COL Application
Part 2, FSAR**



See Regional Gravity and Magnetic Maps (Figures 2.5.1-205 and 2.5.1-206) for location of profiles.

Figure 2.5.1-209. Site Vicinity Gravity and Magnetic Profiles

V. C. Summer Nuclear Station, Units 2 and 3
COL Application
Part 2, FSAR

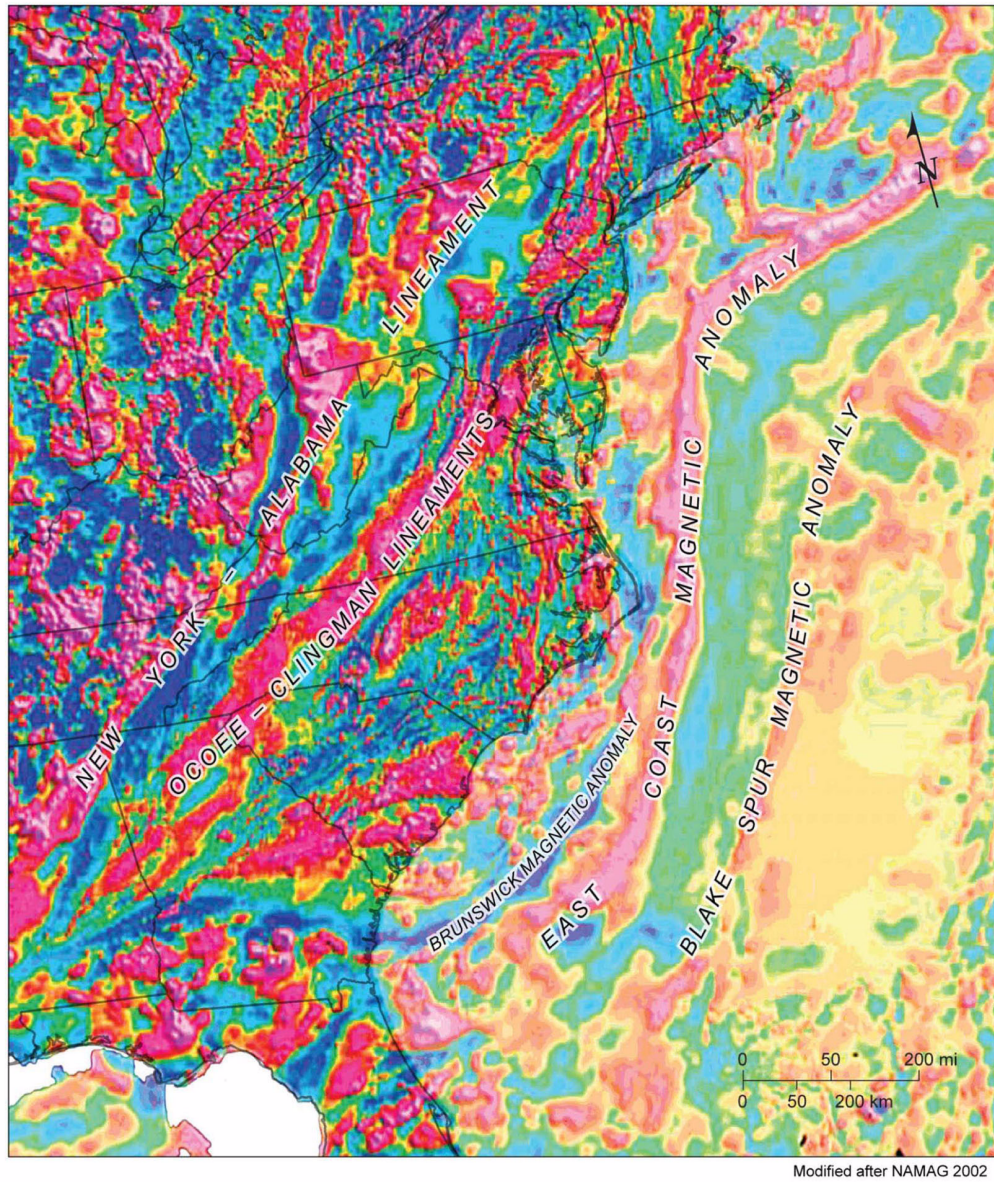


Figure 2.5.1-210. Major Eastern U.S. Aeromagnetic Anomalies

V. C. Summer Nuclear Station, Units 2 and 3 COL Application Part 2, FSAR

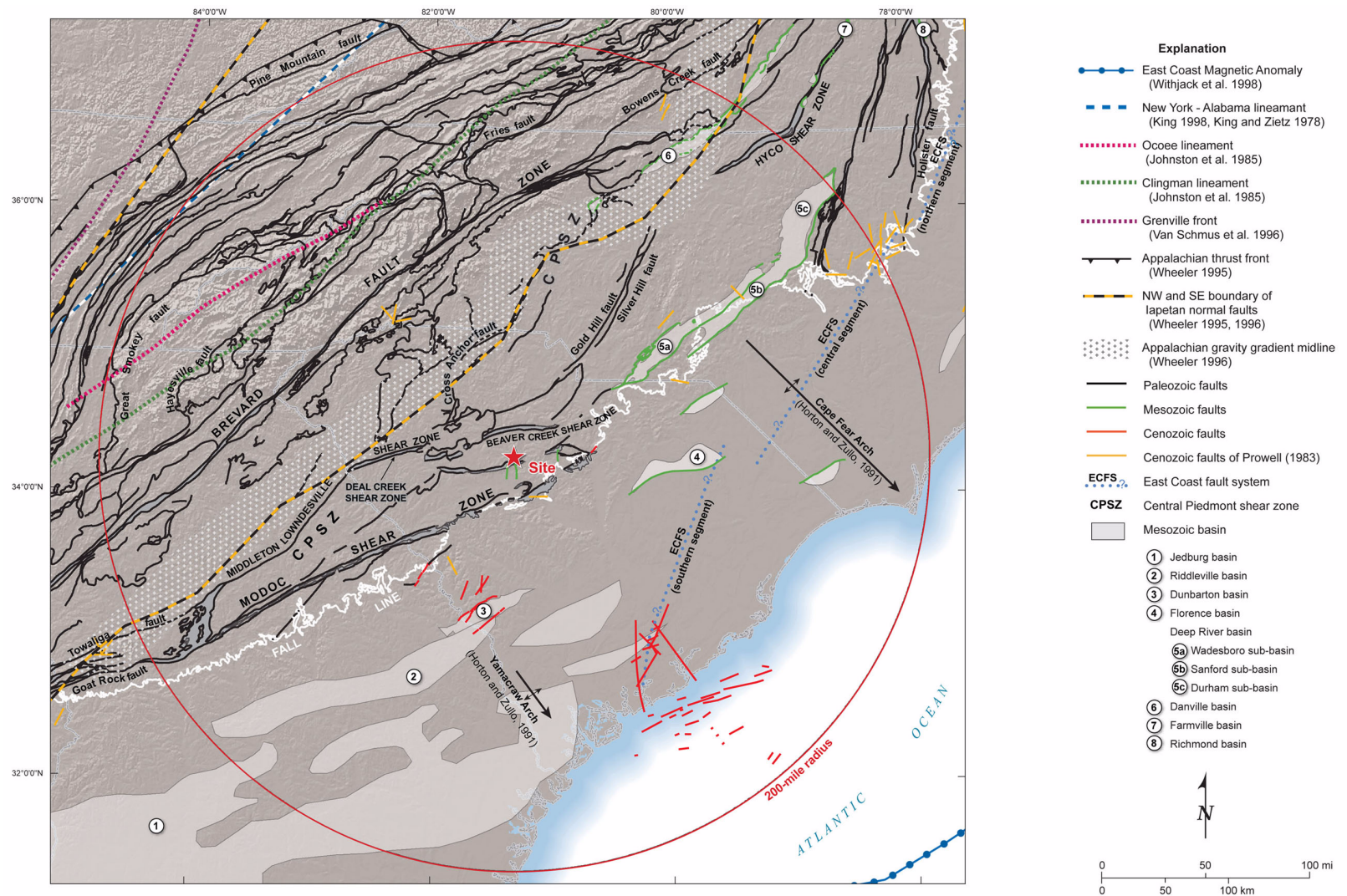


Figure 2.5.1-211 Site Region Tectonic Features

Figure 2.5.1-211. Site Region Tectonic Features

V. C. Summer Nuclear Station, Units 2 and 3 COL Application Part 2, FSAR

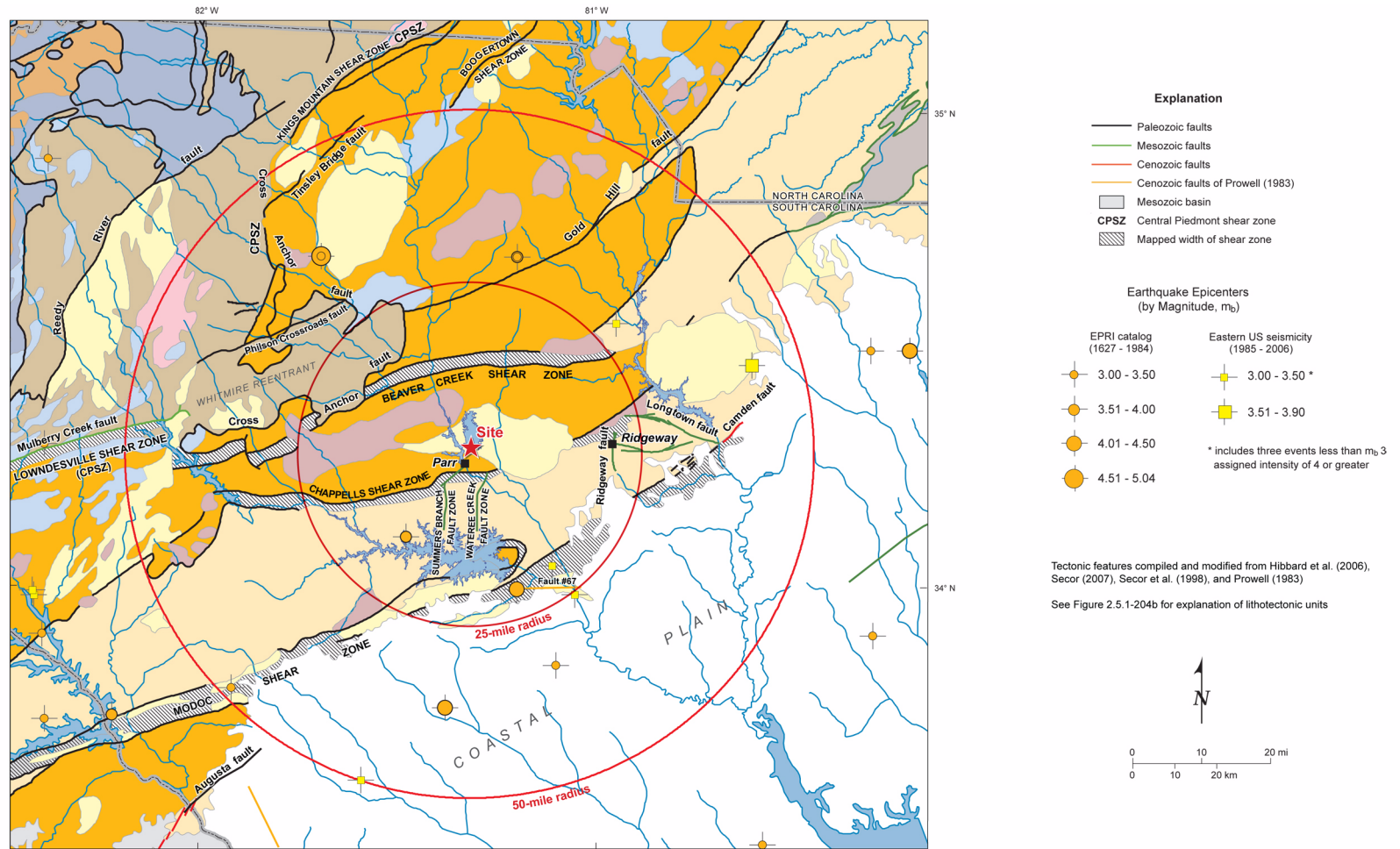


Figure 2.5.1-212. 50-Mile Tectonic Features Map

V. C. Summer Nuclear Station, Units 2 and 3 COL Application Part 2, FSAR

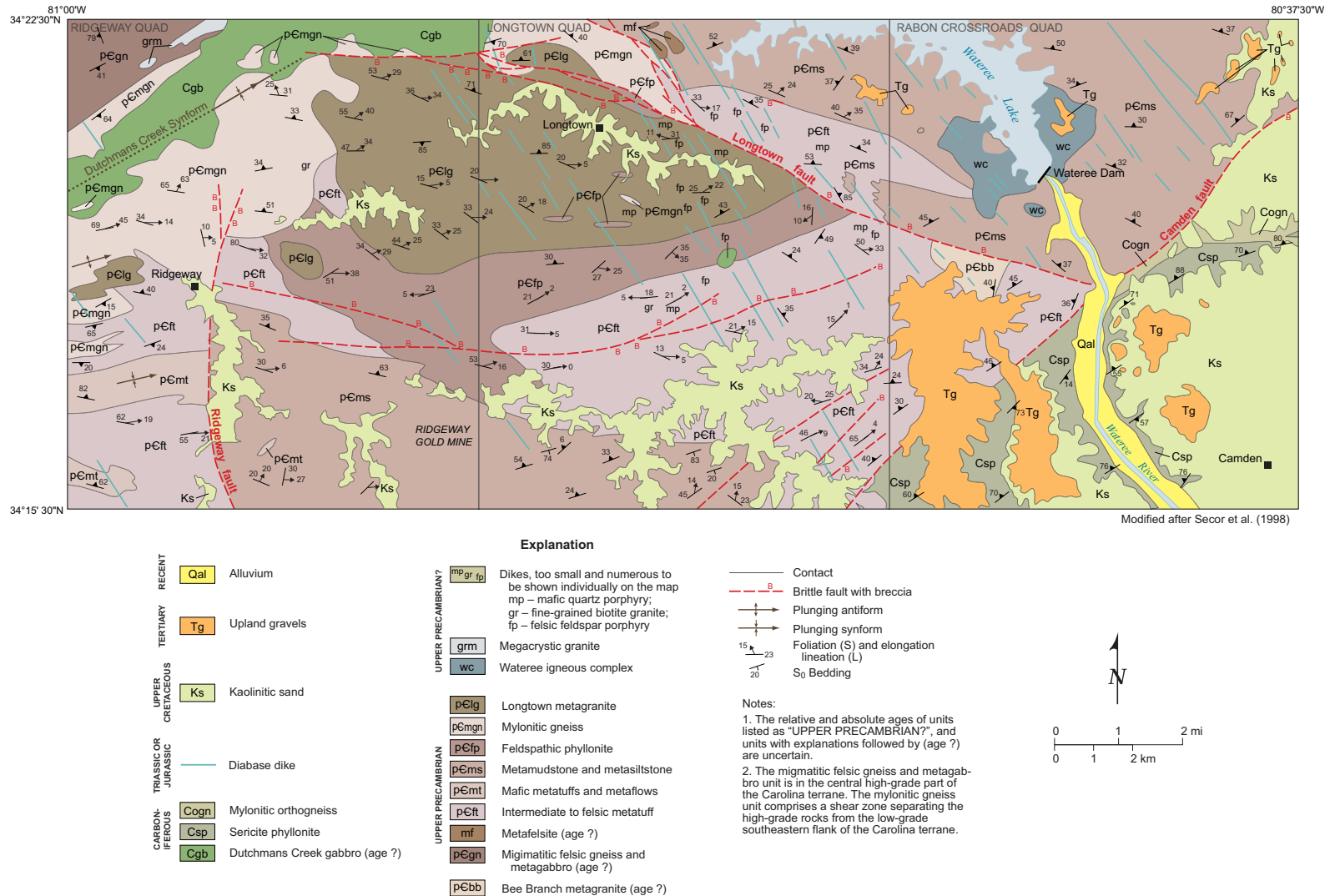


Figure 2.5.1-213. Geologic Map of the Ridgeway-Camden Area