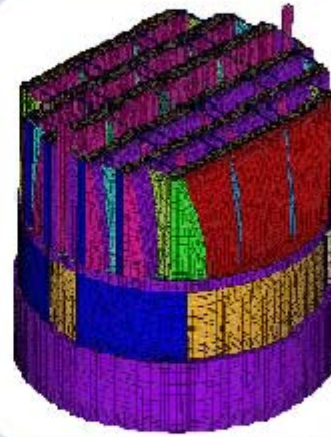
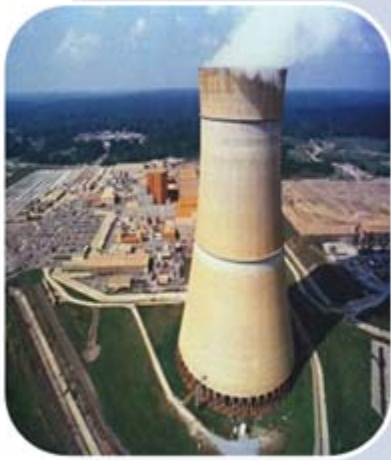


Grand Gulf Nuclear Station



Extended Power Uprate Impact on Steam Dryer

Agenda:

- Replacement Dryer Decision Analysis
- Overview of PBLE Analysis
- GGNS Reg Guide 1.20 Rev.3 Assessment
- Valid Prototype
- GGNS vs. Valid Prototype
- Replacement Dryer Design Attributes
- Power Ascension Plan
- Schedule
- Summary
- Discussion and Feedback

Replacement Dryer Decision Analysis

- Kepner-Tregoe Decision Analysis indicated the Replacement Dryer as the best option
 - Minimizes critical path impact, radiological impact, probability for industrial safety issues and schedule risk[[{3}]]
 - Maximizes reliability and installation simplicity
 - [[{3}]]
 - Meets RG 1.20 Rev.3
- Replacement dryer classified as “Non-Prototype Category 1” per RG 1.20 Rev.3
 - Substantially the same as a specified “Valid Prototype” that is in current operation

Overview of PBLE Analysis

[[

{3}]]

Overview of Plant Based Load Evaluation (PBLE) Process:

[[

{3}]]

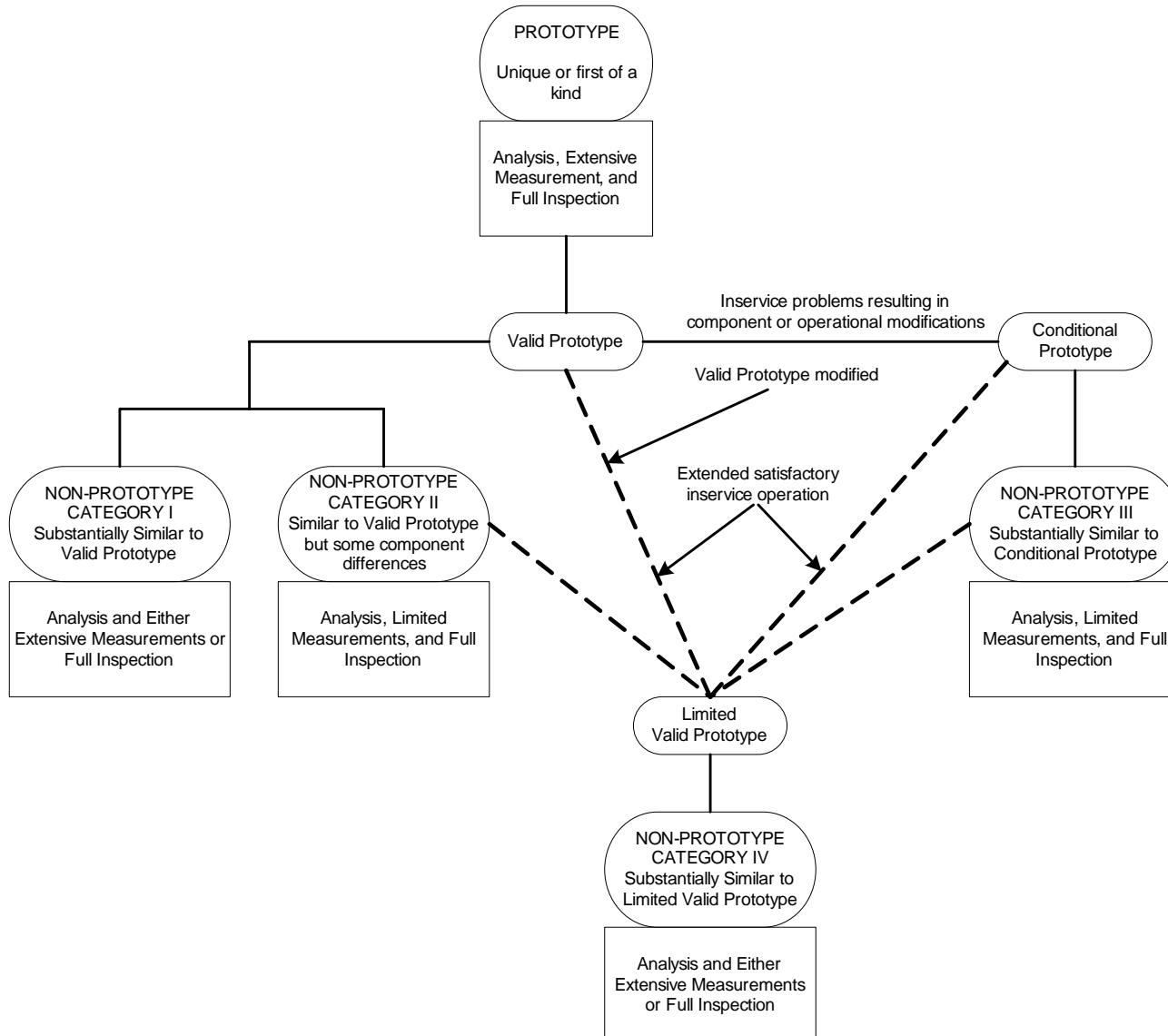
Overview of Plant Based Load Evaluation

(PBLE) Process:

[[

{3}]]

GGNS Reg Guide 1.20 Rev. 3 Assessment



Valid Prototype

- Per RG 1.20 Rev.3

- Valid Prototype

A configuration of reactor internals that has successfully completed a comprehensive vibration assessment program for ‘prototype’ reactor internals and has experienced no adverse in-service vibration phenomena.

- Non-Prototype Category 1

Those configurations that have substantially the same arrangement, design, size, and operating conditions as a specified “valid prototype” for which nominal differences in arrangement, design, size, and operating conditions have been shown (by test or analysis) to have no significant effect on the vibratory response and excitation of those reactor internals important to safety.



{3}]]

Replacement Dryer Design Attributes

[[

{3}]]

Replacement Dryer Design Attributes

[[

{3}]]

Replacement Dryer Design Attributes

[[

{3}]]

Replacement Dryer Design Attributes

[[

{3}]]

Replacement Dryer Design Attributes

[[

{3}]]

Replacement Dryer Design Attributes

[[

{3}]]

Replacement Dryer Design Attributes

[[

{3}]]

Replacement Dryer Design Attributes

[[

{3}]]

Replacement Dryer Design Attributes

[[

{3}]]

Replacement Dryer Design Attributes

[[

{3}]]

Replacement Dryer Design Attributes

[[

{3}]]

Power Ascension Plan

[[

{3}]]

- Inspection Program to be developed as required by SIL 644 and RG 1.20 Rev.3

Schedule

Activity	Time Period
Replacement Dryer Analysis	2 nd qtr. 2010
Detailed Hardware Design & Fabrication Drawings	4 th qtr. 2010
Fabrication Complete	4 th qtr. 2011
Deliver Replacement Dryer to Site	4 th qtr. 2011
EPU Outage Begins	1 st qtr. 2012

Summary:

[[

{3}]]

Future meetings...

Discussions and Feedback:
