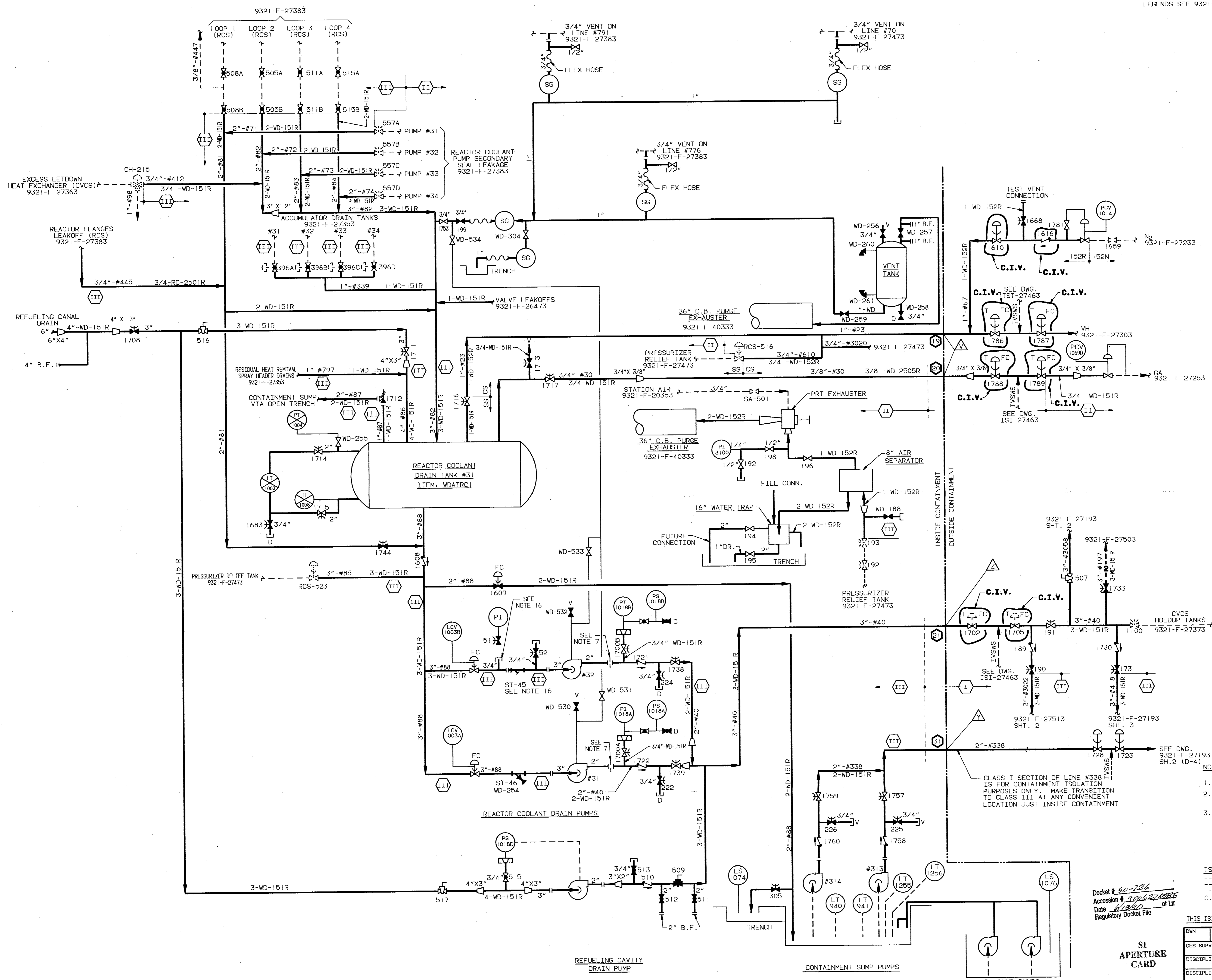


NOTE:
FOR GENERAL NOTES, REFERENCES, REFERENCE DRAWINGS AND LEGENDS SEE 9321-F-27193 SHT. 3



- NOTES:
1. (X) = PENETRATION NUMBER (REF. F.S.A.R.)
 2. THIS DWG. SHALL BE USED ONLY FOR DETERMINING THE EXTENT OF THE INSERVICE INSPECTION BOUNDARIES.
 3. BOUNDARIES SHOWN TO INCLUDE BOUNDARY VALVES WHERE APPROPRIATE. THE ACTUAL PRESSURE RETAINING I.S.I. BOUNDARIES FOR LEAKAGE AND HYDROSTATIC TESTING EXTEND ONLY TO VALVE INTERNALS THAT COMPRISE THE EFFECTIVE OBTURATOR ASSEMBLY.

ISI LEGEND
 ---1---1--- ISI CLASS I
 ---2---2--- ISI CLASS II
 ---3---3--- ISI CLASS III
 C.I.V. = CONTAINMENT ISOLATION VALVE

Docket # 50-286
 Accession # 9006270005
 Date 11/24/94 of Lt
 Regulatory Docket File

THIS ISI DWG. IS BASED ON U.E. & C. DWG. NO. 9321-F-27193, SHT. 1, REV. 32.

OWN	CHK'D	INDIAN POINT NO. 3 NUCLEAR POWER PLANT
DES SUPV		
DISCIPLINE ENG		
DISCIPLINE MGR.		
PROJ APPROVAL		
DATE		FLOW DIAGRAM WASTE DISPOSAL SYSTEM SHEET NO. 1-CONTAINMENT

SI APERTURE CARD

REV NO	DATE	DESCRIPTION	BY	CHK'D	APP'D
3	6/9/94	UPDATED TO 9321-F-27193, SHT. 1, REV. 32.	62	63	64

REVISIONS

SCALE
 DWG NO
 ISI-27193
 SHEET 1 OF 3

REV 3