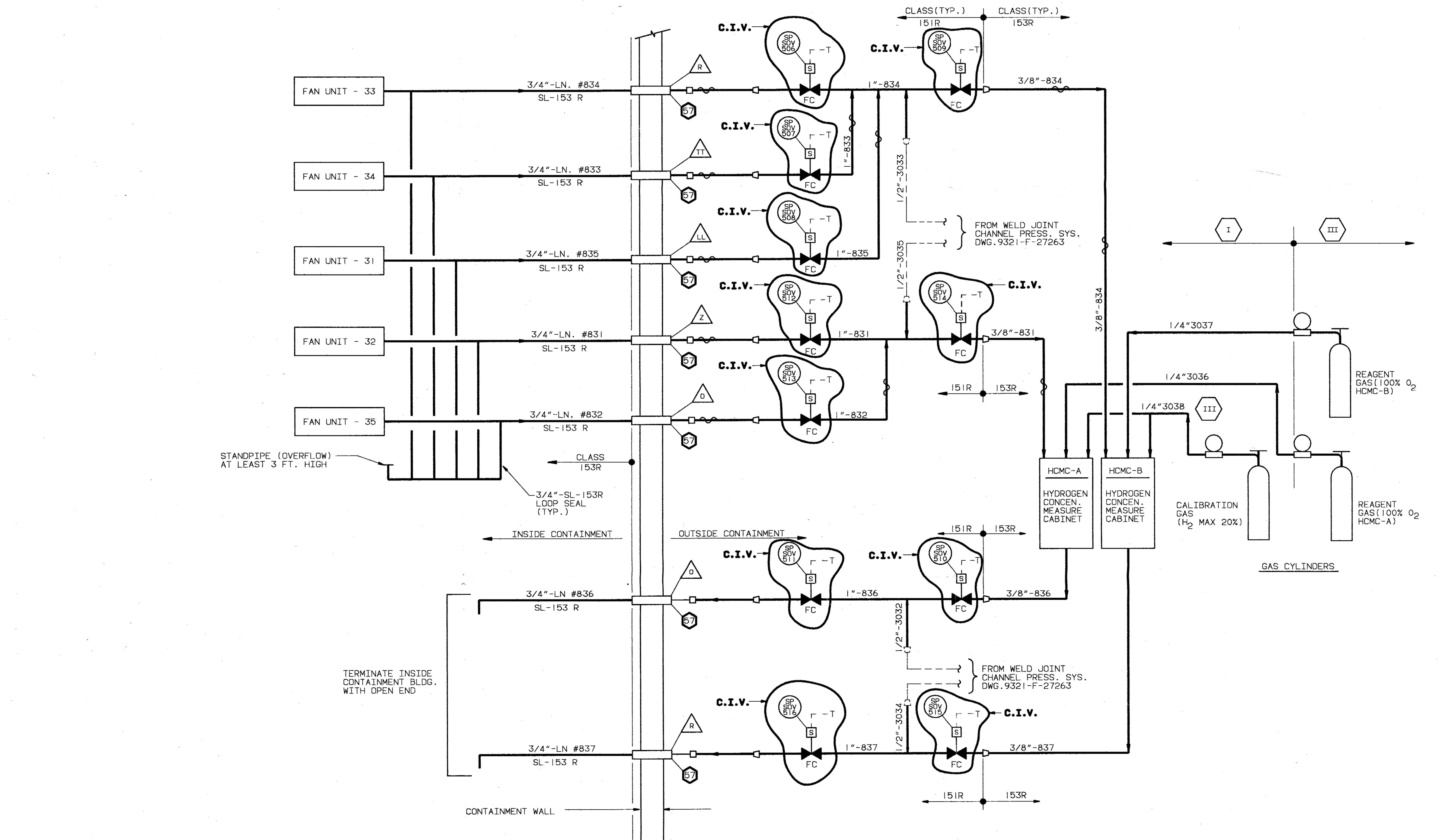


POST ACCIDENT CONTAINMENT VENTING SYSTEM
SEE NOTES 6 & 7



- REFERENCE DRAWINGS:**
- 9321-F-27263 FLOW DIAGRAM PENETRATION & LINER WELD JOINT CHANNEL PRESSURIZATION SYSTEM
 - 9321-F-26863 CONT. BLDG. - POST ACCIDENT CONT. AIR SAMPLING SYSTEM
 - 6604-186-D-11 CONTAINMENT PARAMETERS H2 CONCENTRATION MEASUREMENT SYSTEM POST ACCIDENT CONTAINMENT VENTING SYSTEM-PLANS, SECTIONS & DETAILS
 - 9321-F-40793

- LEGEND**
- SUPPLY AIR
 - - - CONTROL AIR
 - - - ELEC. WIRING (BY OTHERS)

- GENERAL NOTES**
- ALL PIPING TO BE IN ACCORDANCE WITH SPEC. 6604-104-248-4 CLASS 151R & 153R AS NOTED.
 - △ DENOTES CONTAINMENT PENETRATION.
 - INDICATES ELECTRICAL HEAT TRACING
 - ALL PIPING ON THIS DRAWING TO BE SEISMIC CLASS I EXCEPT AS NOTED.
 - S-T = CONTAINMENT ISOLATION SIGNAL.
 - HAND OPERATOR SHALL BE ADDED TO AIR SUPPLY VALVE PCV-1228 FOR LOCATION SEE DWG. 9321-F-70093.
 - MANUAL OPERATED VALVES SHALL BE AS PER WESTINGHOUSE SPECIFICATION NO. 676281 TAG NO. AS SHOWN.
 - ⊗ = PENETRATION NUMBER (REF. F.S.A.R.)
 - THIS DWG. SHALL BE USED ONLY FOR DETERMINING THE EXTENT OF THE INSERVICE INSPECTION BOUNDARIES.
 - BOUNDARIES SHOWN TO INCLUDE BOUNDARY VALVES WHERE APPROPRIATE. THE ACTUAL PRESSURE RETAINING I.S.I. BOUNDARIES FOR LEAKAGE AND HYDROSTATIC TESTING EXTEND ONLY TO VALVE INTERNALS THAT COMPRISE THE EFFECTIVE OBSTURATOR ASSEMBLY.

ISI LEGEND
C.I.V. = CONTAINMENT ISOLATION VALVE

Docket # 20-286
Accession # 300627008
Date 6/2/80 of Lt
Regulatory Docket File

SI APERTURE CARD

THIS ISI DWG. IS BASED ON U.E. & C.DWG. #9321-F-26533, REV. 7.

INDIAN POINT NO.3 NUCLEAR POWER PLANT	
FLOW DIAGRAM CONTAINMENT HYDROGEN CONCENTRATION MEASUREMENT POST ACCIDENT CONTAINMENT VENTING SYSTEM	
SCALE	REV 3
DWG NO	ISI-26533
SHEET OF	

REV NO	DATE	DESCRIPTION	BY	CHKD	APP'D
3	6/2/80	UPDATED TO 9321-F-26533, REV. 7.	PM	DS	DM