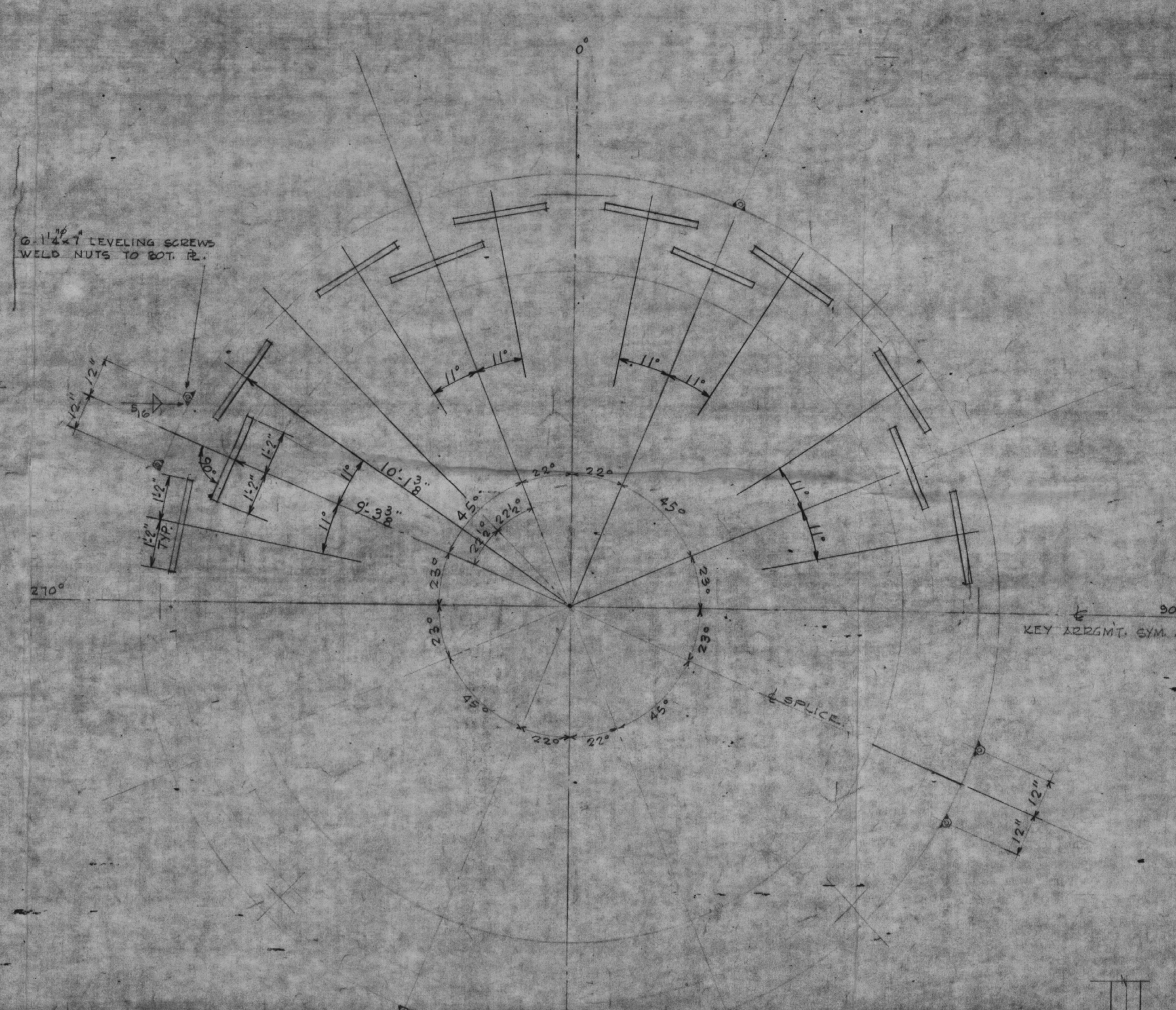


HALF PLAN BOT. & WEB MS.

SCALE 1/2"=1'-0"

HALF TOP-PLAN

SCALE 1/2"=1'-0"



HALF PLAN OF SHEAR KEYS

SCALE 1/2"=1'-0"

COOLING RS DRILLED FOR STRESS RELIEVING AFTER STRESS RELIEVING & FIT-UP. ALL RS. SHALL BE LEVEL & MUST BE IN SAME PLANE. F.O. 0.000, ±0.010 WHEN ASSEMBLED.

EL. 59'-3" ± 0.000, ±0.010

DIRECTIONS VARY TO PROVIDE 1/8" HOWEVER EXACT LOCATION OF HOLES NOT KNOWN

2" DIA. STIM. GEN. PUMP NOZZLES & SUPPORTS (SEE PLAN)

AS BUILT GIRDER VARIES FROM 2'-04" TO 2'-05"

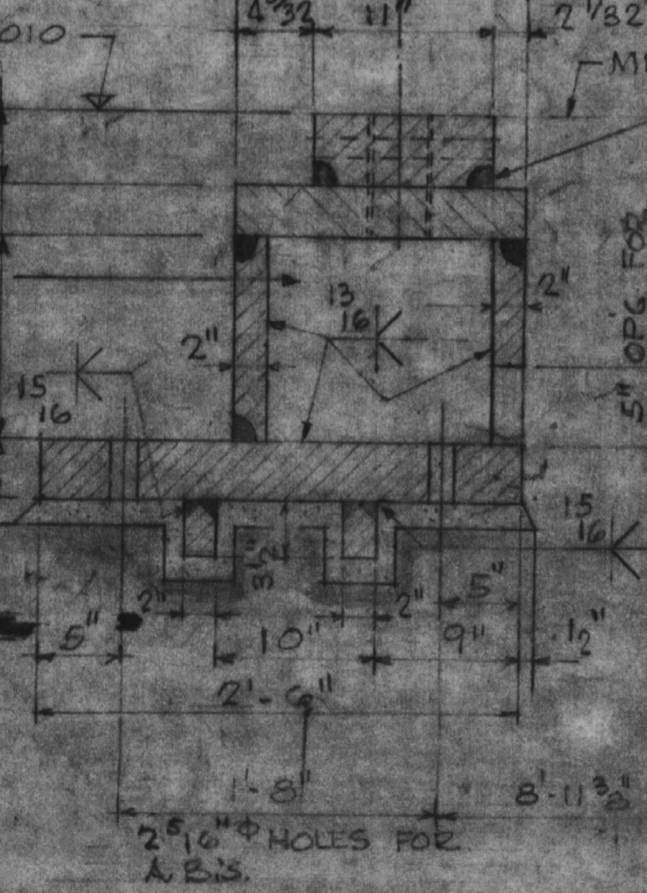
AS BUILT GROUP VARIES FROM 2'-01" TO 2'-02"

3/8" DIA. HOLES IN TOP OF GIRDER IN COOLING RS TO BE DRILLED & TAPPED IN FIELD BY OTHERS. WELD COOLING RS TO GIRDER IN SHOP

9'-0" RADIUS

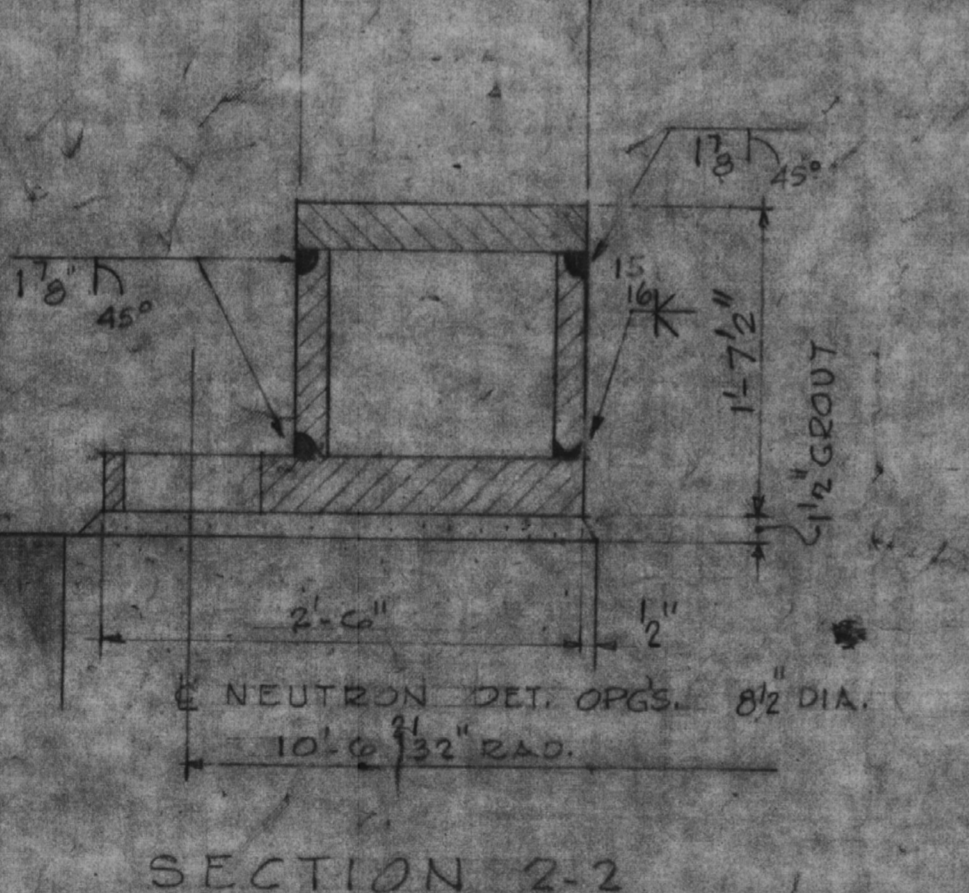
MILLED SURFACE (FINISH 125 RMS)

NOTE: MACHINE CONTACT AREAS BETWEEN GROUPS RS & TOP OF GIRDER FOR FULL BEARING. (FIN. 125 RMS)



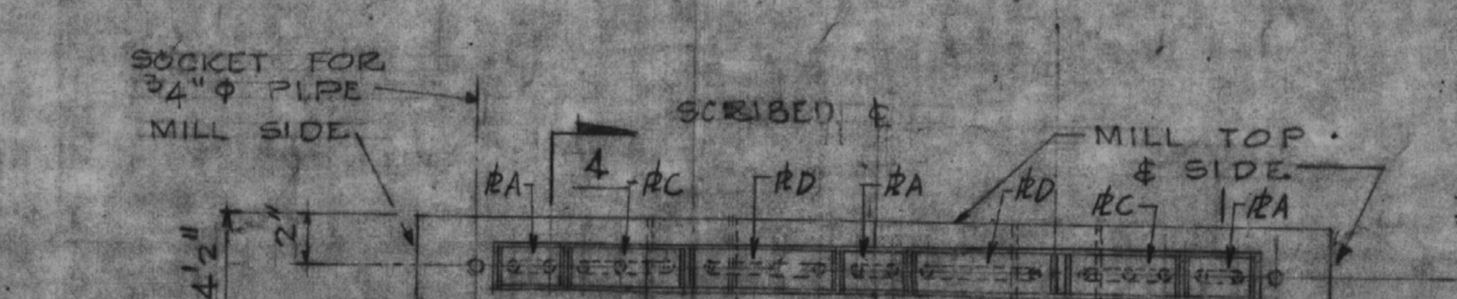
SECTION 1-1

SCALE 1"=1'-0"



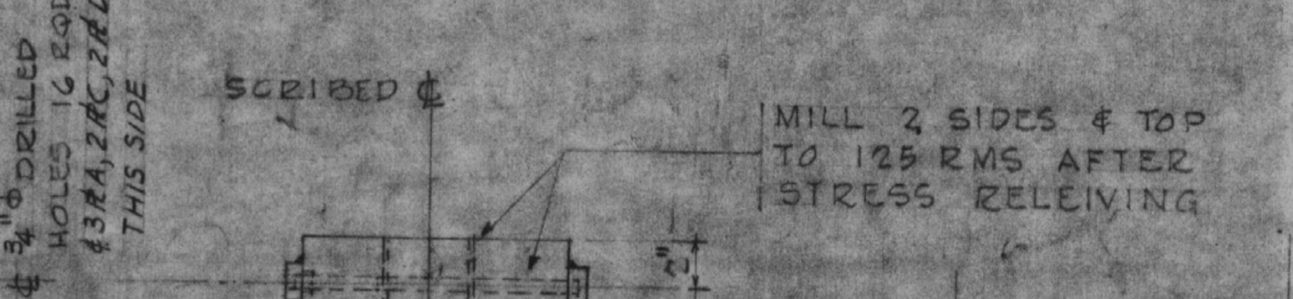
SECTION 2-2

SCALE 1"=1'-0"



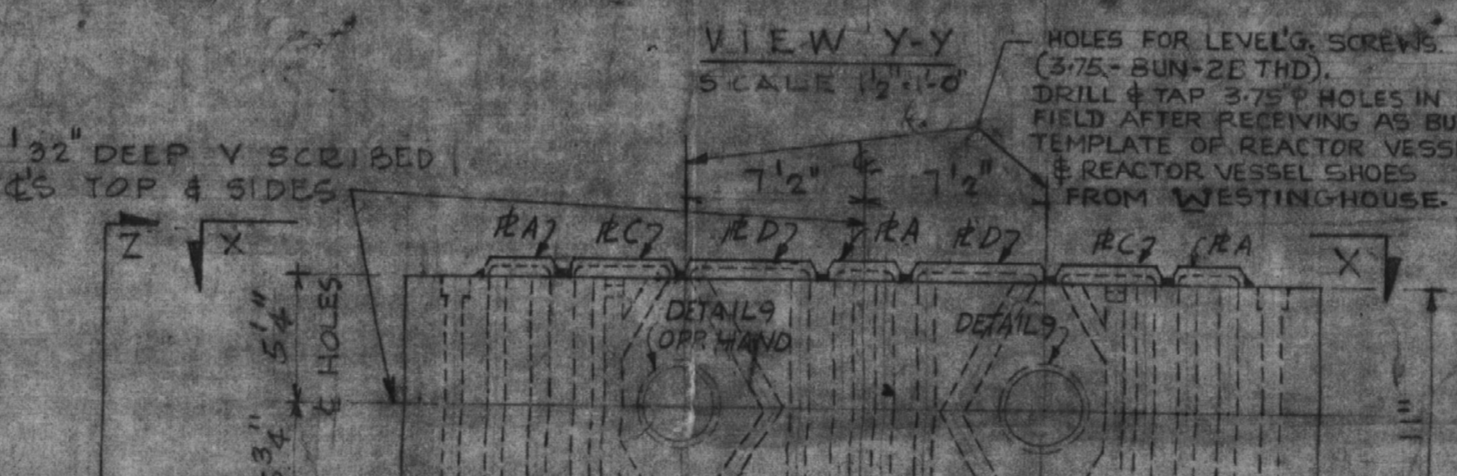
VIEW X-X

SCALE 1/2"=1'-0"



VIEW Z-Z

SCALE 1/2"=1'-0"

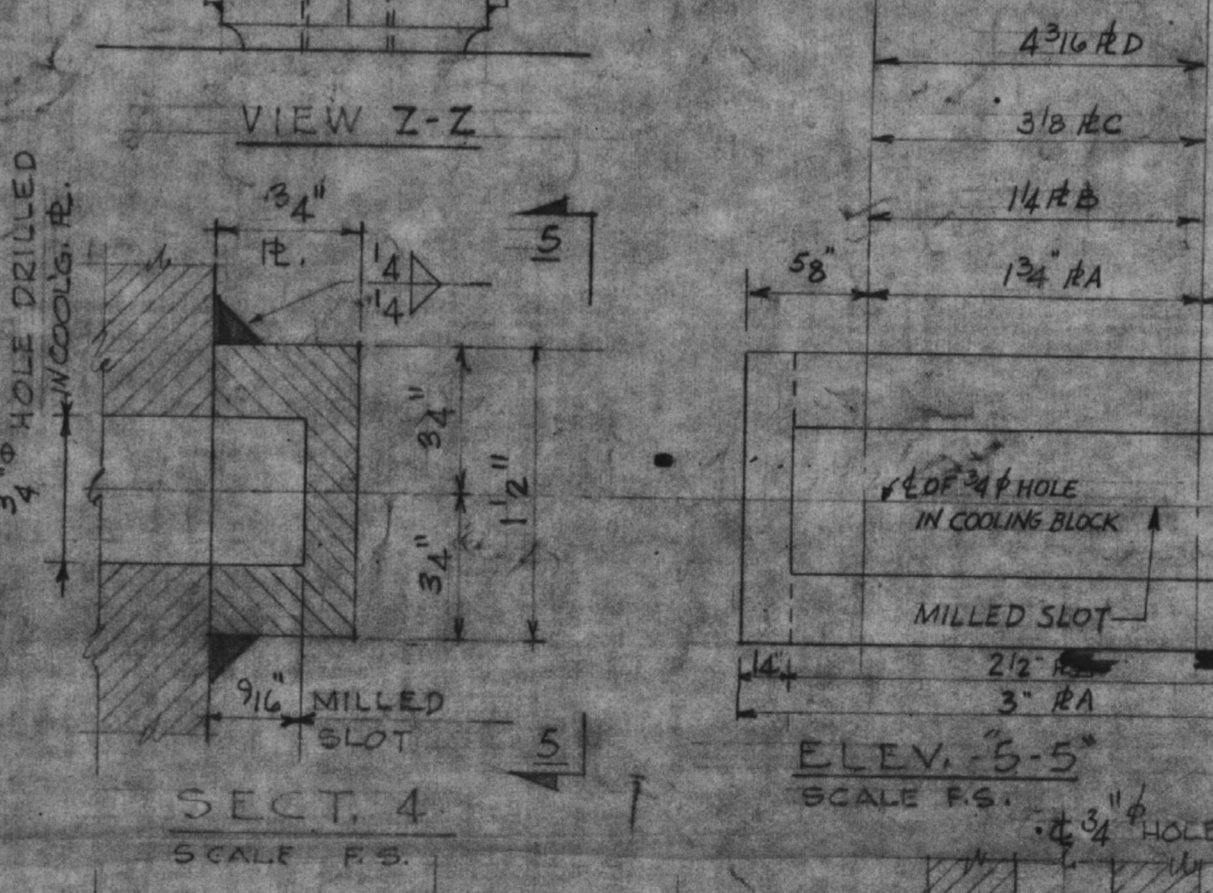


VIEW Y-Y

SCALE 1/2"=1'-0"

COOLING P. DETAILS

4-REQUIRED



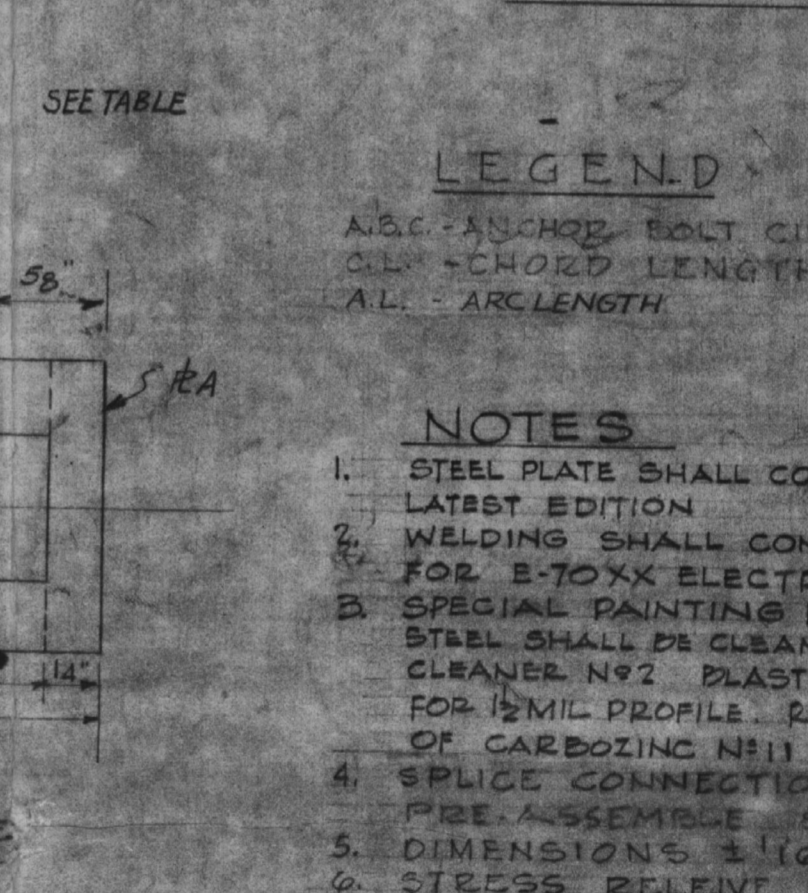
SECT. 4

SCALE F.S.



SECT. 6-G

SCALE F.S.



ELEV. 5'-5"

SCALE F.S.

LEGEND

A&C - AS SHOWN BOLT CIRCLES

CL - CHORD LENGTH

AL - ARC LENGTH

NOTES

- STEEL PLATE SHALL CONFORM TO ASTM SPEC'S FOR A 572 STEEL LATEST EDITION.
- WELDING SHALL CONFORM TO A.W.S. CODE LATEST EDITION FOR E-TXX ELECTRODES.
- SPECIAL PAINTING FOR SURFACES NOT MACHINED FINISHED - STRUCTURAL STEEL SHALL BE CLEANED OF ALL OIL & GREASE WITH CLEAN RAGS & CARBOLING CLEANER. NO. 2 PLAST STEELWORK IN ACCORDANCE WITH SSPC SPEC. OPG. 63 FOR ISMIC PROFILE. REMOVE DIRT & RUST. PAINT WITH ONE PRIME SHOP COAT OF CARBOZING N11 TO A 3 MIL DRY THICKNESS.
- SPRICE CONNECTIONS SHALL BE MILLED AT CONTACT SURFACE.
- FREE ASSEMBLY IS CHECK FOR ACCURACY BEFORE DELIVERY.
- DIMENSIONS 3/16 UNLESS OTHERWISE NOTED.
- STRESS RELIEVING ENTIRE RING GIRDER BEFORE FINAL MACHINING & WELDING OF COOLING PIPES.

REFERENCE DRAWINGS

RP 9321-2424 - 1/2" REACTOR VESSEL SUPPORTS

9321-2311 - PRESS VESSEL - FINAL MACHINING

9321-F-1327 - ANCHOR BOLT SETTING PLAN

PRO APERTURE CARD

POOR ORIGINAL

TERRA APERTURE CARD

COOLING P. END PLATES

	QTY	OVERALL LENGTH	QUANTITY
RA	14	3'	9
RB	14	22"	2
RC	38	43"	2
RD	44	57 1/2"	2

NO.	DESCRIPTION	DATE	BY	CHKD.
8	FINAL ISSUE			
7	STRESS RELIEVING IN FIELD			
6	REVISION			
5	REVISION			
4	REV. COOLING P. DETAILS			
3	REV. COOLING P. DETAILS			
2	REV. COOLING P. DETAILS			
1	REV. COOLING P. DETAILS			

WESTINGHOUSE ELECTRIC CORPORATION

CONTAINMENT REACTOR VESSEL SUPPORT STEEL

FOR CONSOLIDATED EDISON COMPANY INDIAN POINT GENERATING STATION UNIT NO. 2

ENGINEER: [Signature]

DATE: [Date]

STATE NO. [Number]

U.S. & C. DWG. NO. 9321-F-1284-8

CON. ED. DWG. NO. A200169